

# WATERFORD CENTER

800 & 804 CLANTON RD.  
CHARLOTTE, NC 28217



Office, Showroom & Warehouse Space Available For Lease



## PROPERTY HIGHLIGHTS

- » Two building Class A Office/Flex park totaling 90,327 SF
- » Centrally and conveniently located on I-77 (right off Exit 7) and Clanton Road
- » Exterior building signage available with excellent visibility
- » Free on-site parking
- » Suites include drive-in or dock-high doors

For more information, contact:

**Frances Crisler**  
+1 704 620 6014  
frances.crisler@cushwake.com

**Drew Coholan**  
+1 704 620 6124  
drew.coholan@cushwake.com

**Erin Turulski**  
+1 704 916 1565  
erin.turulski@cushwake.com

**Faison**

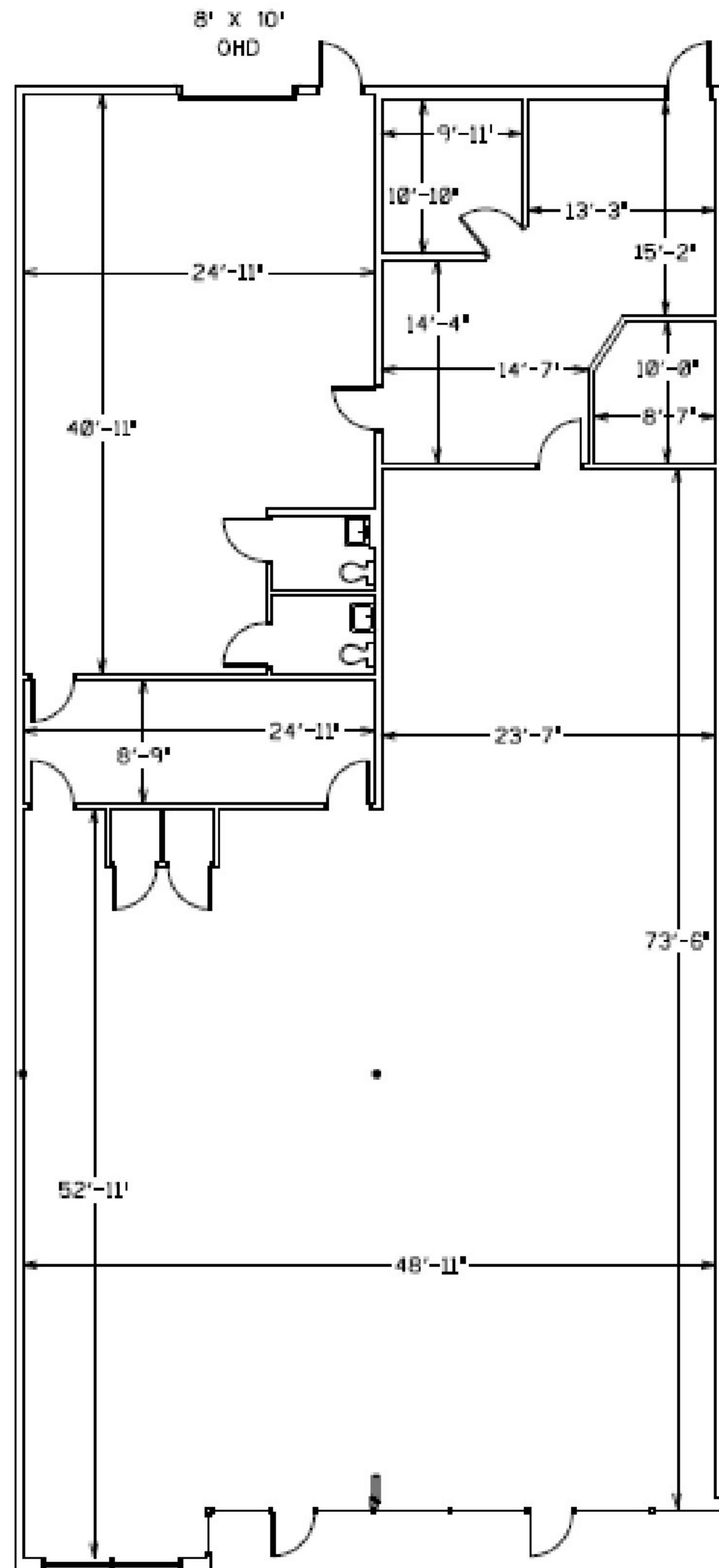
**CUSHMAN &  
WAKEFIELD**



# WATERFORD CENTER

## 800 CLANTON ROAD - Suite S

TOTAL = 5,189 SF | OFFICE = 4,234 SF | WAREHOUSE = 955



CUSHMAN &  
WAKEFIELD



# Site Plan



For more information, contact:

Frances Crisler  
+1 704 620 6014  
frances.crisler@cushwake.com

Drew Coholan  
+1 704 620 6124  
drew.coholan@cushwake.com

Erin Turulski  
+1 704 916 1565  
erin.turulski@cushwake.com



©2025 Cushman & Wakefield. All rights reserved. The information contained in this communication is strictly confidential. This information has been obtained from sources believed to be reliable but has not been verified. NO WARRANTY OR REPRESENTATION, EXPRESS OR IMPLIED, IS MADE AS TO THE CONDITION OF THE PROPERTY (OR PROPERTIES) REFERENCED HEREIN OR AS TO THE ACCURACY OR COMPLETENESS OF THE INFORMATION CONTAINED HEREIN, AND SAME IS SUBMITTED SUBJECT TO ERRORS, OMISSIONS, CHANGE OF PRICE, RENTAL OR OTHER CONDITIONS, WITHDRAWAL WITHOUT NOTICE, AND TO ANY SPECIAL LISTING CONDITIONS IMPOSED BY THE PROPERTY OWNER(S). ANY PROJECTIONS, OPINIONS OR ESTIMATES ARE SUBJECT TO CERTAINTY AND DO NOT SIGNIFY CURRENT OR FUTURE PROPERTY PERFORMANCE.

