

FOR LEASE

123 LUTZ STREET
MONCTON, NEW BRUNSWICK



PROPERTY HIGHLIGHTS

This +/- 21,000 sq ft commercial space offers an exceptional downtown location for your business. The building features a versatile layout comprising retail, warehouse, and office spaces that can be tailored to your needs.

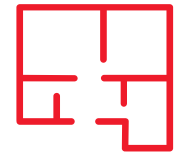
Situated in the heart of Downtown Moncton, this property is conveniently located just steps away from Main Street's bustling amenities, including coffee shops, restaurants, hotels, banks, Service NB, the Capitol Theater, and the Avenir Center. Boasting approximately 40 paved onsite parking spots, it caters perfectly to a variety of retail and office tenants.

Ideal for meeting your business requirements in the vibrant center of the city.

\$13 - \$15

PSF NET

\$10.00 psf (Additional Rent)



UP TO 21,000

SF



**FLEXIBLE
TERMS**





RETAIL



WAREHOUSE

HIGHLIGHTS

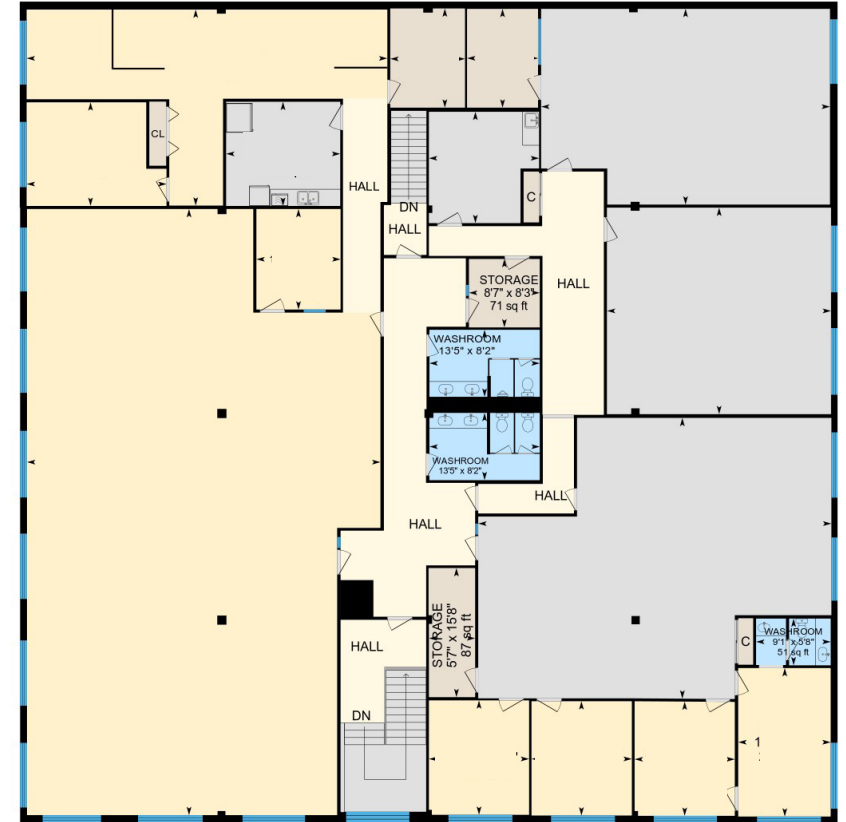
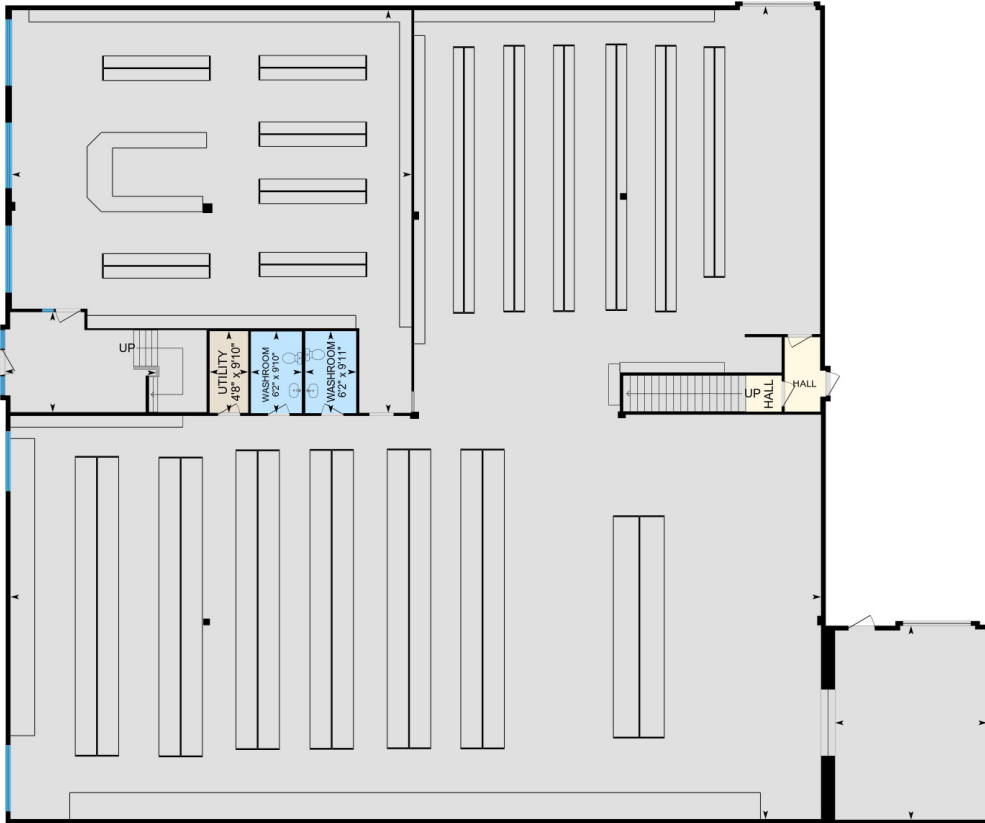
- Main Floor Layout: Retail, warehouse/stock room, electrical room, washrooms, janitors' room, shipping and receiving area, with overhead door, main entrance to retail area.
- Second Floor Layout: Retail & Office space, hallway & washrooms.
- +/- 40 Parking Spots.
- 2 dock loading doors off Robinson Street, with a main entrance on Lutz Street.



OFFICE



FLOOR PLAN



VIRTUAL TOUR

LOCATION HIGHLIGHTS

Located on Lutz Street, a bustling thoroughfare that intersects Main Street, this commercial building occupies a prominent position in the vibrant center of downtown Moncton. Its strategic location not only ensures high visibility but also places it amidst the dynamic pulse of the city's commercial and cultural activities.

As Moncton's downtown area continues to expand with new developments and an influx of residents, this property stands as a beacon for businesses looking to capitalize on the area's growth. Its accessibility and central location make it an ideal choice for a wide range of commercial ventures, from retail to professional services.





Adam MaGee
Managing Director NB/NL
amagee@cwatlantic.com
+1 506 872 2507

Suzie Taylor
Commercial Real Estate Advisor
staylor@cwatlantic.com
+1 506 380 1777

©2026 Cushman & Wakefield. All rights reserved. The information contained in this communication is strictly confidential. This information has been obtained from sources believed to be reliable but has not been verified. NO WARRANTY OR REPRESENTATION, EXPRESS OR IMPLIED, IS MADE AS TO THE CONDITION OF THE PROPERTY (OR PROPERTIES) REFERENCED HEREIN OR AS TO THE ACCURACY OR COMPLETENESS OF THE INFORMATION CONTAINED HEREIN, AND SAME IS SUBMITTED SUBJECT TO ERRORS, OMISSIONS, CHANGE OF PRICE, RENTAL OR OTHER CONDITIONS, WITHDRAWAL WITHOUT NOTICE, AND TO ANY SPECIAL LISTING CONDITIONS IMPOSED BY THE PROPERTY OWNER(S). ANY PROJECTIONS, OPINIONS OR ESTIMATES ARE SUBJECT TO UNCERTAINTY AND DO NOT SIGNIFY CURRENT OR FUTURE PROPERTY PERFORMANCE.