



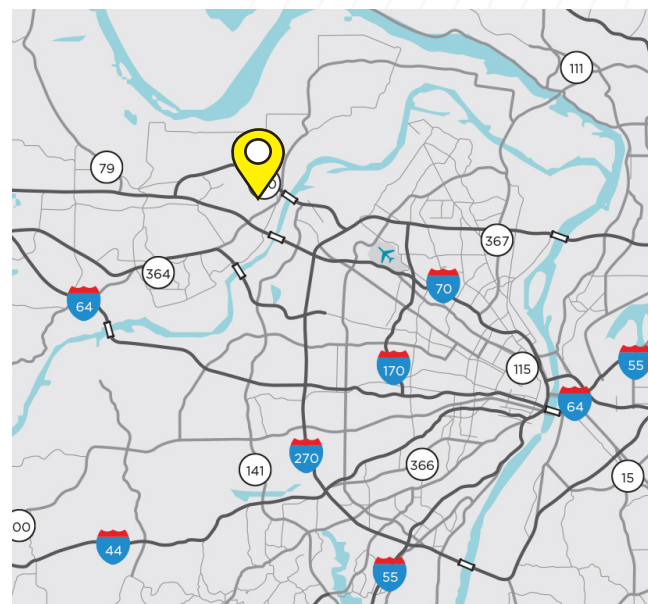
5,535 SF AVAILABLE FOR LEASE

953 HARMSTED COURT ST. CHARLES, MO 63301



PROPERTY HIGHLIGHTS

Total Building Area:	31,130 SF
Total Available Area:	5,535 SF
Office %:	50%
Clear Height:	18'
Loading:	One (1) Drive-In
Sprinkler:	ESFR
Power:	3 Phase, 208 V
Lease Rate:	\$7.95/SF, NNN

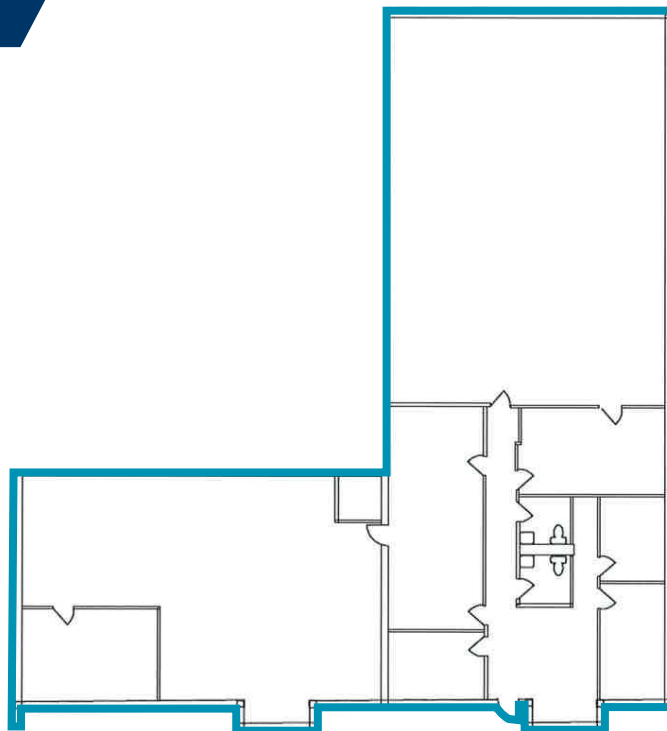


FOR MORE INFORMATION, PLEASE CONTACT

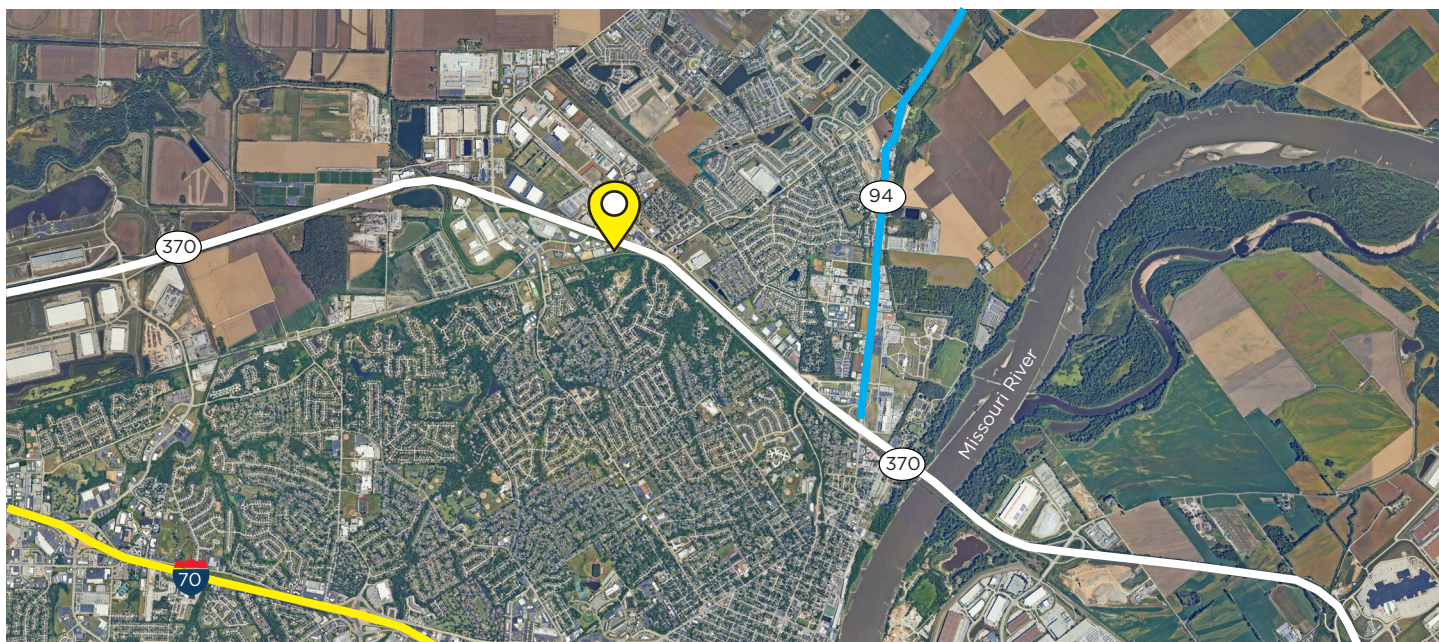
MATT EASTIN, SIOR, CCIM
Executive Director
+1 314 746 0350
matt.eastin@cushwake.com

CHRISTY WIRTH, SIOR, CCIM
Director
+1 314 813 9524
christy.wirth@cushwake.com

FLOOR PLAN



AERIAL



FOR MORE INFORMATION, **PLEASE CONTACT**

MATT EASTIN, SIOR, CCIM
Executive Director
+1 314 746 0350
matt.eastin@cushwake.com

CHRISTY WIRTH, SIOR, CCIM
Director
+1 314 813 9524
christy.wirth@cushwake.com