

# 7 1 7 F I F T H A V E N U E

EAST 55TH STREET BETWEEN FIFTH & MADISON AVENUES

7,466 SF RETAIL SHOWROOM AVAILABLE





7 1 7 F I F T H A V E N U E  
EAST 55TH STREET BETWEEN FIFTH & MADISON AVENUES

SECOND FLOOR 5,777 SF  
GROUND FLOOR 1,689 SF  
**TOTAL 7,466 SF**

FRONTAGE 55<sup>th</sup> Street  
POSSESSION Immediate

COMMENTS

- Directly across from the entrance to the St. Regis Hotel
- Ideally positioned amongst the world's most recognizable restaurants, hotels, cultural destinations and retail brands



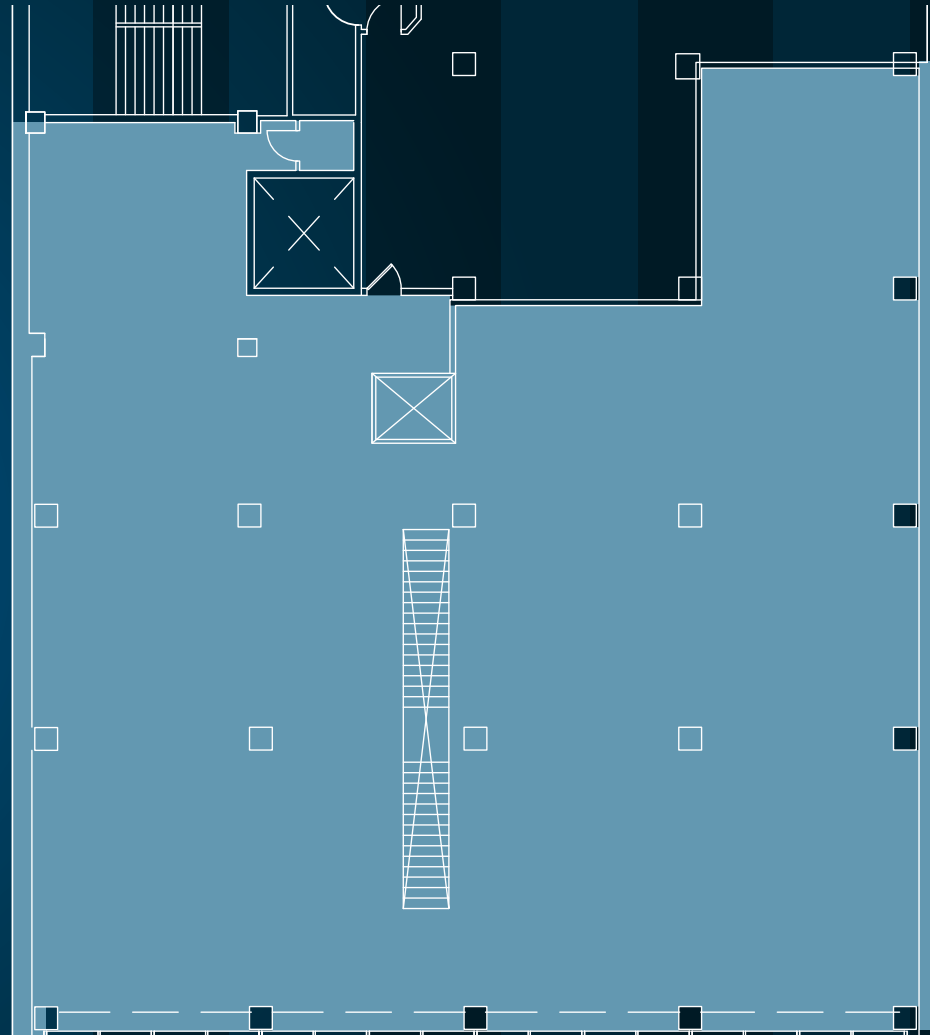
7 1 7 F I F T H A V E N U E  
EAST 55TH STREET BETWEEN FIFTH & MADISON AVENUES

SECOND FLOOR 5,777 SF  
GROUND FLOOR 1,689 SF  
**TOTAL 7,466 SF**

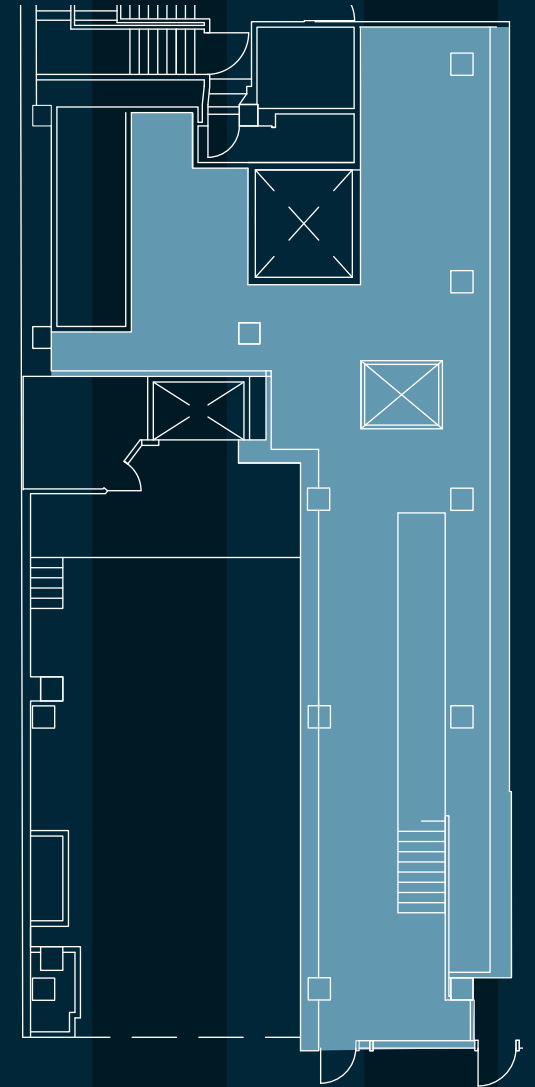
## FEATURES

- Unique multi-level opportunity for retail / showroom use
- Significant signage and branding opportunity
- Vertical transportation (elevator + stair) in place

SECOND FLOOR



GROUND FLOOR



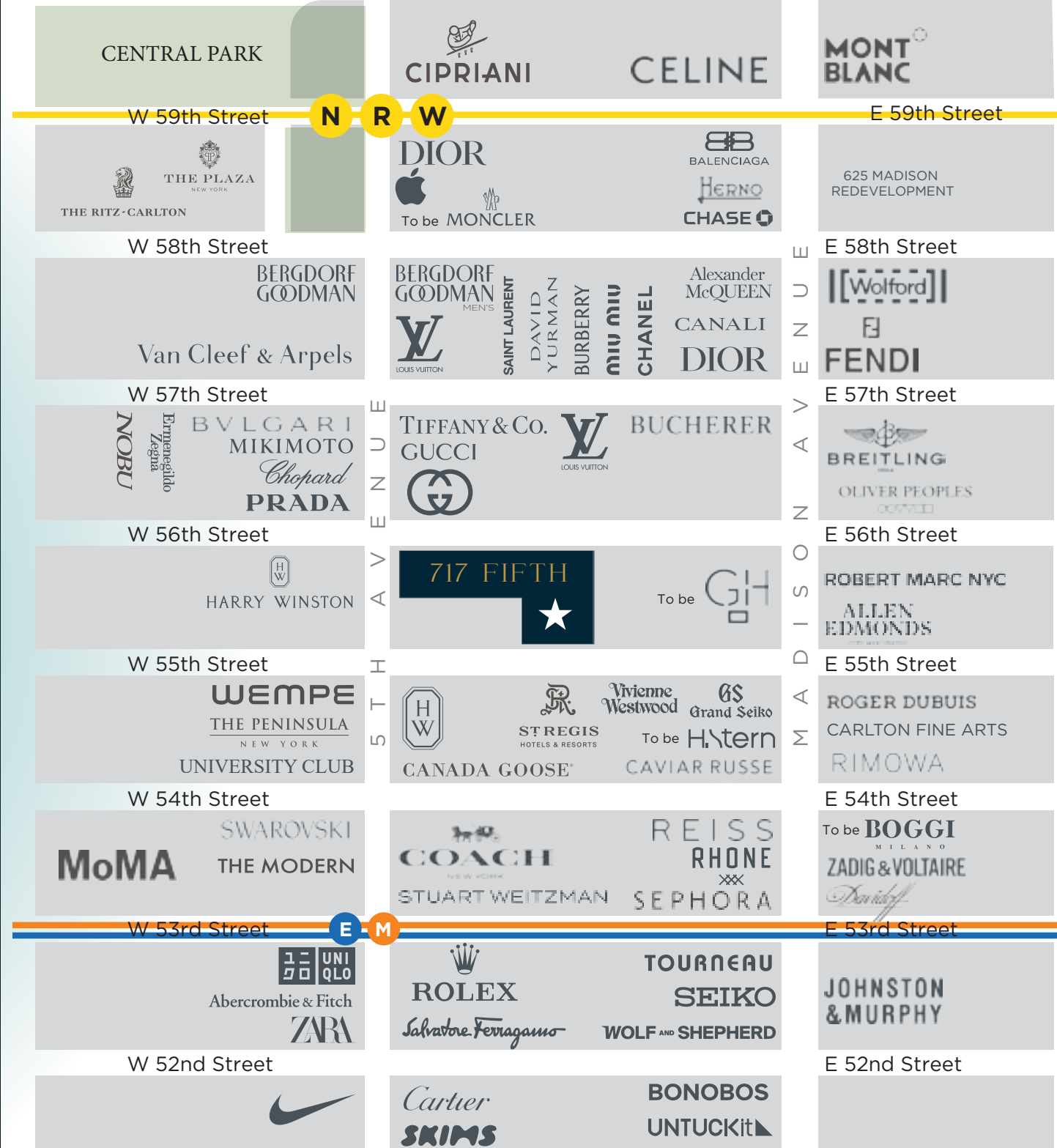
E A S T 5 5 T H S T R E E T

7 1 7 F I F T H A V E N U E  
EAST 55TH STREET BETWEEN FIFTH & MADISON AVENUES

NEIGHBORHOOD

NEARBY RETAILERS INCLUDE:

- PRADA
- TIFFANY & CO
- LOUIS VUITTON
- HARRY WINSTON
- GUCCI
- COACH
- CANADA GOOSE
- ROLEX
- CHANEL
- DIOR
- APPLE





# 7 1 7 F I F T H A V E N U E

MICHAEL O'NEILL | 212.841.7909  
[michael.oneill@cushwake.com](mailto:michael.oneill@cushwake.com)

JASON GREENSTONE | 212.841.7713  
[jason.greenstone@cushwake.com](mailto:jason.greenstone@cushwake.com)

TAYLOR REYNOLDS | 212.841.5920  
[taylor.reynolds@cushwake.com](mailto:taylor.reynolds@cushwake.com)

MACKENZIE SUTER | 212.841.5018  
[mackenzie.suter@cushwake.com](mailto:mackenzie.suter@cushwake.com)

LILLY CRAVER | 212.698.5616  
[lilly.craver@cushwake.com](mailto:lilly.craver@cushwake.com)

EXCLUSIVE LEASING AGENT:



**CUSHMAN &  
WAKEFIELD**