

# 1290 MADISON AVENUE

SOUTHWEST CORNER OF 92ND STREET



**PRIME CORNER RETAIL - CARNEGIE HILL / MUSEUM MILE NEIGHBORHOOD**

EXCLUSIVE LEASING AGENT



# 1290 MADISON AVENUE

**137' OF LINEAR FRONTAGE ON MADISON AVENUE AND 92ND STREET**

- New construction
- Logical divisions considered
- Spectacular storefront and frontage (awning possible)
  - High ceiling
  - New HVAC system in place
- Can be vented for restaurant use



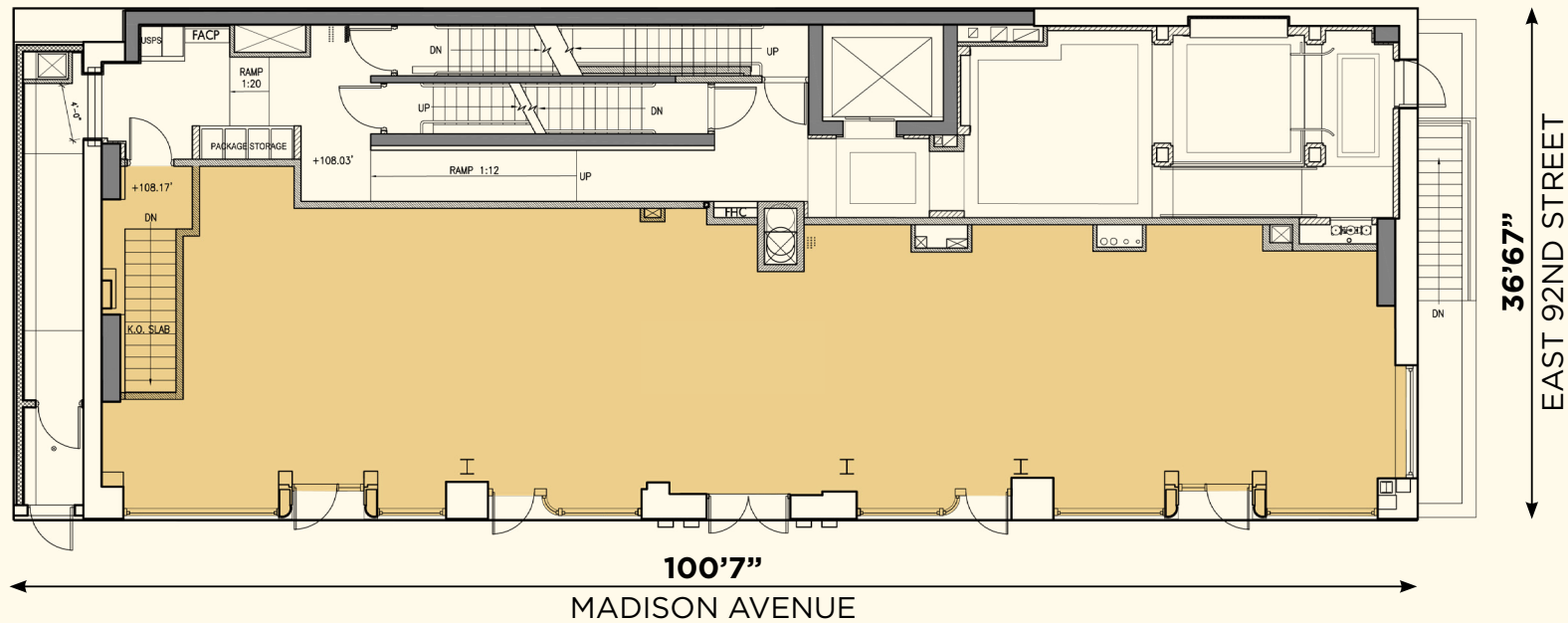
**MUSEUM MILE**

**1290**

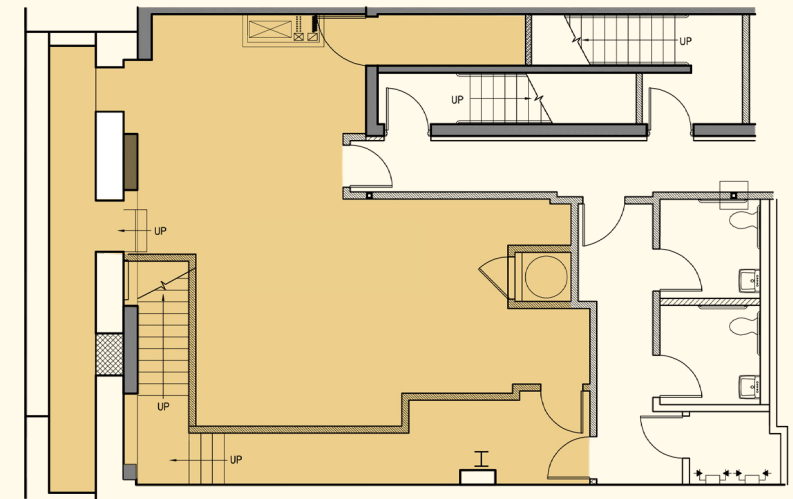
# 1290 MADISON AVENUE

## FLOOR PLANS

**GROUND - 2,538 SF**



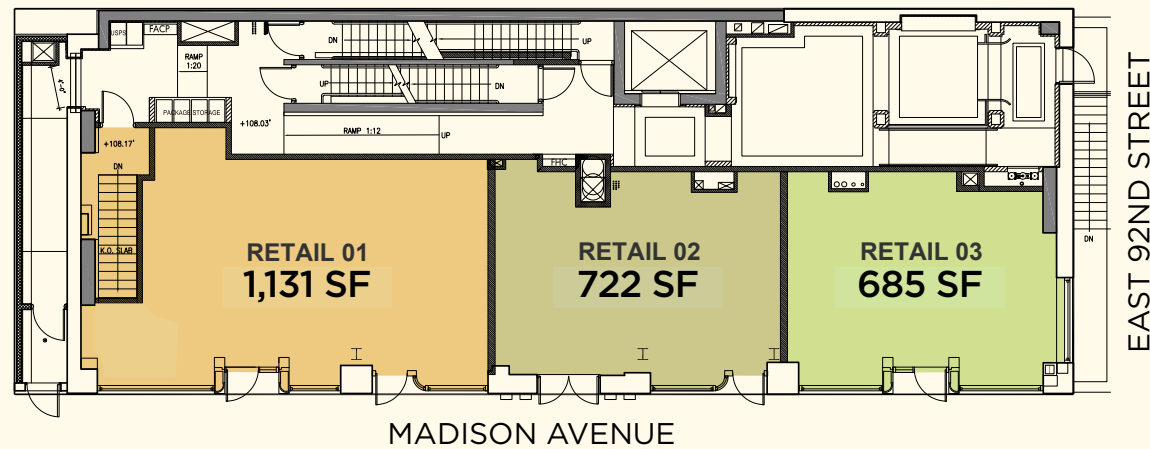
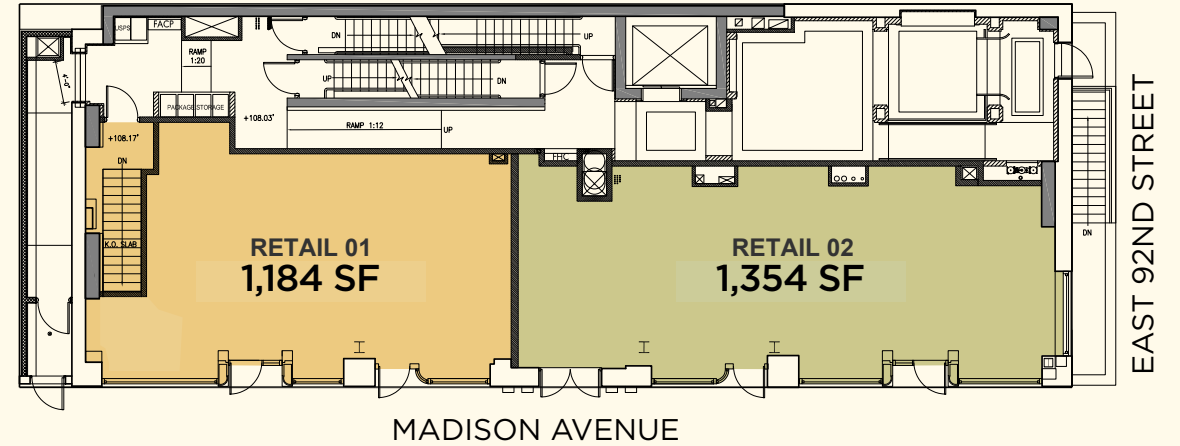
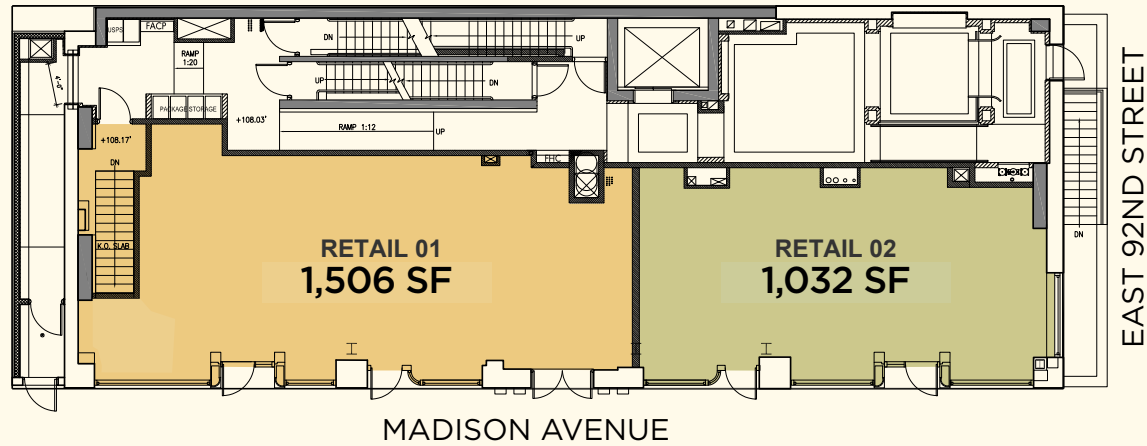
**LOWER LEVEL - 1,469 SF**



# 1290 MADISON AVENUE

## FLOOR PLANS DIVISION OPTIONS

**GROUND - 2,538 SF**



# 1290 MADISON AVENUE

## NEIGHBORING TENANTS

J. McLaughlin

alice + olivia  
BY STACEY BENDET

bluemercury®  
makeup • skincare • spa

Brooks Brothers

ROLLER RABBIT

VUOR1

FAHERTY

ZADIG & VOLTAIRE

TUMI

CENTRAL PARK

MUSEUM MILE

FIFTH AVENUE

MADISON AVENUE

PARK AVENUE

EAST 93<sup>rd</sup> STREET  
American Friends of the SHANGHAI MUSEUM  
Jewish Museum juicepress

EAST 92<sup>nd</sup> STREET  
Nightingale 1290 Madison  
RUSSIAN CONSULATE

EAST 91<sup>st</sup> STREET  
COOPER HEWITT SPENCE GLACE  
90th Street PHARMACY  
NOGLU

EAST 90<sup>th</sup> STREET  
BLUESTONE LANE RIGBY & PELLER  
clie jacadi PARIS

EAST 89<sup>th</sup> STREET  
GUGGENHEIM SAINT DAVID'S SCHOOL babycottons.  
nununu

EAST 88<sup>th</sup> STREET  
bluemercury PINK CHICKEN NEW YORK  
HANRO BLUE & CREAM

EAST 87<sup>th</sup> STREET  
alice + olivia BY STACEY BENDET  
NILI LOTAN ALEX MILL  
Brooks Brothers

EAST 86<sup>th</sup> STREET  
NEUE GALERIE CHASE ROLLER RABBIT  
BUTTERFIELD MARKET the westside

EAST 86<sup>th</sup> STREET  
THE MET EQUINOX JAMES PERSE  
Starbucks

J. McLAUGHLIN SPENCE  
CHASE

BLUE TREE  
ZCRAVE: Citi TheDaltonSchool®

ESE AZENABOR  
DON MORPHY Le Petit Kids Horace Mann

DUANEreade by Walgreens  
BLANK STREET benefit Madison Fare

MORTON WILLIAMS WINE & SPIRITS  
MORTON WILLIAMS THE FRESH MARKETPLACE

FAHERTY

SWAROVSKI (MALIN+GOETZ)  
TODD SNYDER\* VUOR1

TD Bank  
ZADIG & VOLTAIRE  
LE PAIN QUOTIDIEN

Mount Sinai

the Y

TheDaltonSchool®

# 1290 MADISON AVENUE

**ANDREW KAHN | 212.841.7732**

**ANDREW.KAHN@CUSHWAKE.COM**

**MATT WEINREB | 212.841.5068**

**MATT.WEINREB@CUSHWAKE.COM**



EXCLUSIVE LEASING AGENT



**CUSHMANWAKEFIELD.COM**