



CUSHMAN &  
WAKEFIELD

LUND  
COMPANY



# 1130 S 13TH STREET

NORFOLK, NE 68701

**±2,000 - 4,934 SF Available For Lease**

**Lease Rate: Contact Listing Agent**



# PROPERTY HIGHLIGHTS

Class A retail/medical building with unbeatable visibility. Nearby national and local retailers include, Target, Hobby Lobby, Wal-Mart, Menards, Kohl's and many others.



Lease Rate:

Contact Listing Agent

Year Built:

2017

Available SF:

+/- 2,000 SF - 4,934 SF

Total Site Area:

50,404 SF

Building SF:

10,149 SF

Zoning:

Commercial

Number of Tenants:

3

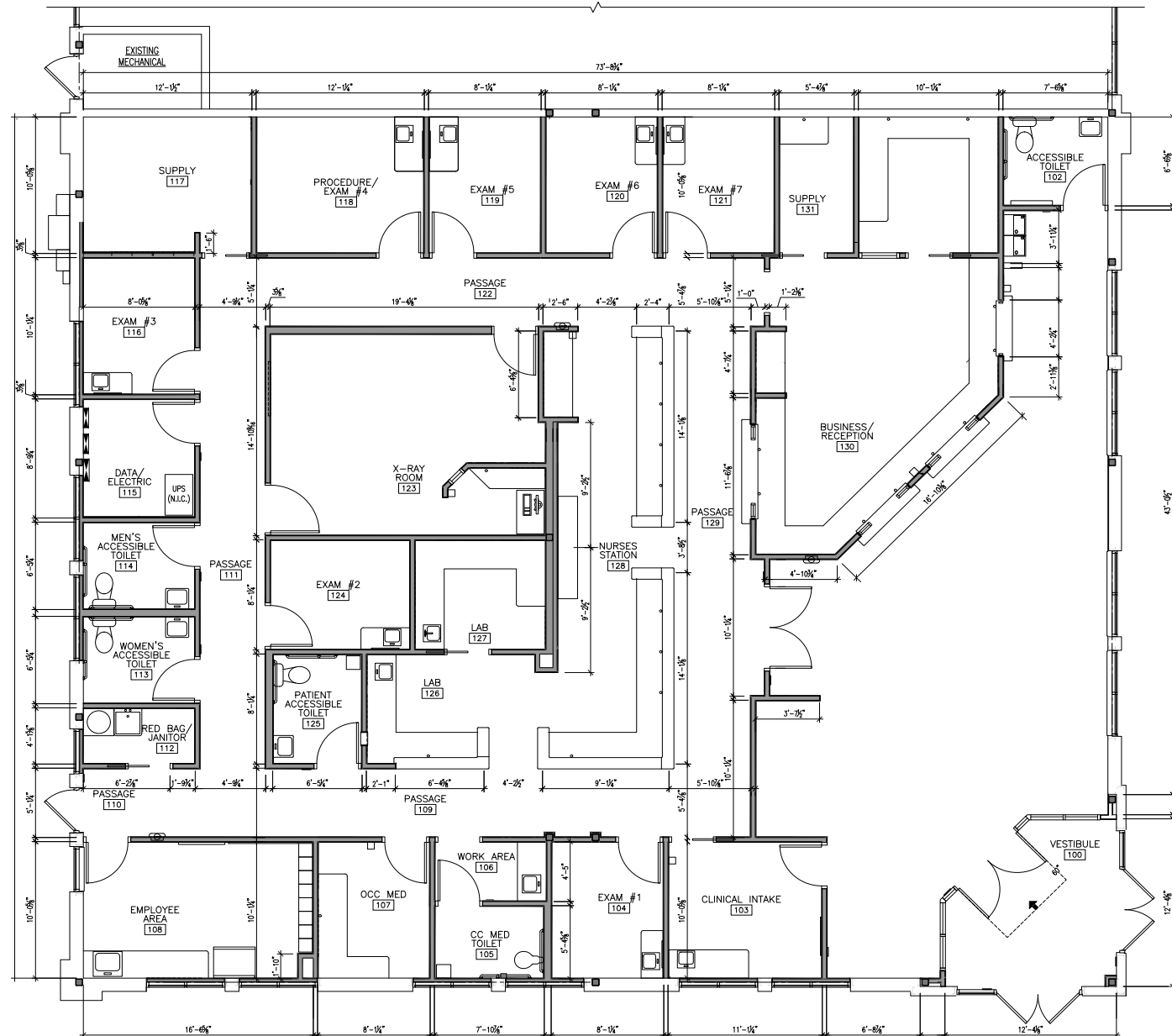
Traffic Count:

31,040 EADT (13th & Omaha Ave)

# FLOOR PLAN

## FORMER MEDICAL CLINIC

- 4,934 SF Available
- Beautiful medical clinic finishes in place
- Six exam rooms
- One procedure room
- One lab
- Four restrooms
- One x-ray room





# LOCATION MAP



W Pasewalk Avenue

Omaha Avenue

J Carson Blvd.

32,895 EADT

DOLLAR GENERAL

HyVee  
EMPLOYEE OWNED

JUICE  
BY THE GALLON

AQUAVENTURE

S. 1st Street





# AERIAL MAP





For more information, please contact:

**Dylan McCabe**

Associate

+1 402 548 4079

[dylan.mccabe@lundco.com](mailto:dylan.mccabe@lundco.com)

450 Regency Parkway, Suite 200

Omaha, NE 68114

+1 402 393 8811

[lundco.com](http://lundco.com)

*Independently Owned and Operated / A Member of the Cushman & Wakefield Alliance*

©2024 Cushman & Wakefield. All rights reserved. The information contained in this communication is strictly confidential. This information has been obtained from sources believed to be reliable but has not been verified. NO WARRANTY OR REPRESENTATION, EXPRESS OR IMPLIED, IS MADE AS TO THE CONDITION OF THE PROPERTY (OR PROPERTIES) REFERENCED HEREIN OR AS TO THE ACCURACY OR COMPLETENESS OF THE INFORMATION CONTAINED HEREIN, AND SAME IS SUBMITTED SUBJECT TO ERRORS, OMISSIONS, CHANGE OF PRICE, RENTAL OR OTHER CONDITIONS, WITHDRAWAL WITHOUT NOTICE, AND TO ANY SPECIAL LISTING CONDITIONS IMPOSED BY THE PROPERTY OWNER(S). ANY PROJECTIONS, OPINIONS OR ESTIMATES ARE SUBJECT TO UNCERTAINTY AND DO NOT SIGNIFY CURRENT OR FUTURE PROPERTY PERFORMANCE.