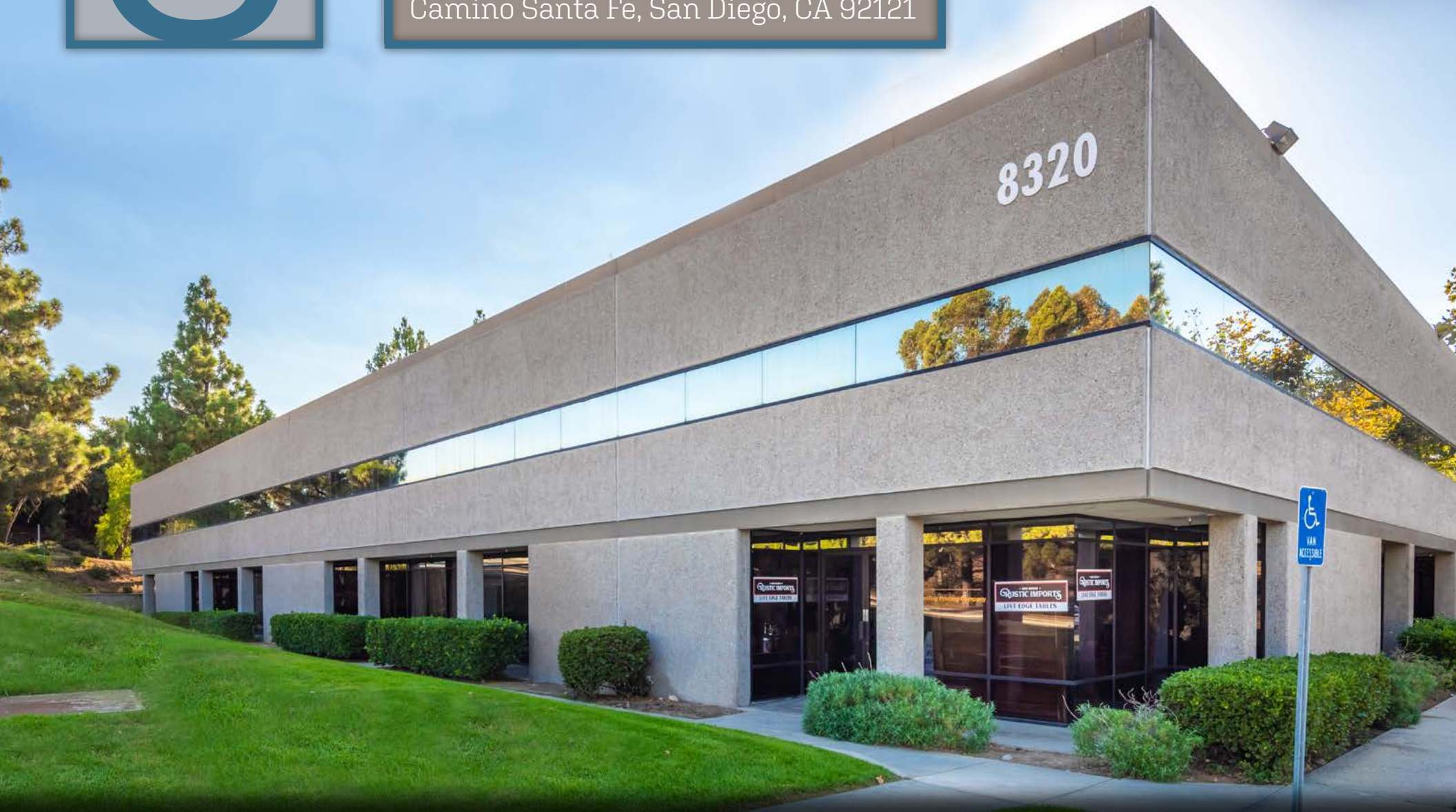




CAMINO SANTA FE BUSINESS PARK

8320, 8340, 8360, 8375, 8380, 8395, 8445
Camino Santa Fe, San Diego, CA 92121





CAMINO SANTA FE BUSINESS PARK

8320, 8340, 8360, 8375, 8380, 8395, 8445
Camino Santa Fe, San Diego, CA 92121



172,743 SQ FT
RENTABLE AREA



DOCK / GRADE
LOADING



16' - 22'
CLEAR HEIGHT



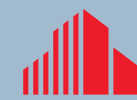
WESTERN MIRAMAR
LOCATION



BRANT ABERG, SIOR
direct: 858.546.5464
mobile: 858.413.5600
brant.aberg@cushwake.com
CA Lic. 01773573

RYAN DOWNING, SIOR
direct: 858.546.5416
mobile: 760.840.1164
ryan.downing@cushwake.com
CA Lic. 01955032

TRINITY CARSON
direct: 619.928.6034
mobile: 602.489.4876
trinity.carson@cushwake.com
CA Lic. 02343245



**CUSHMAN &
WAKEFIELD**

12830 El Camino Real, Suite 100 | San Diego, CA 92130
858.452.6500 | 858.630.6320 | cushmanwakefield.com



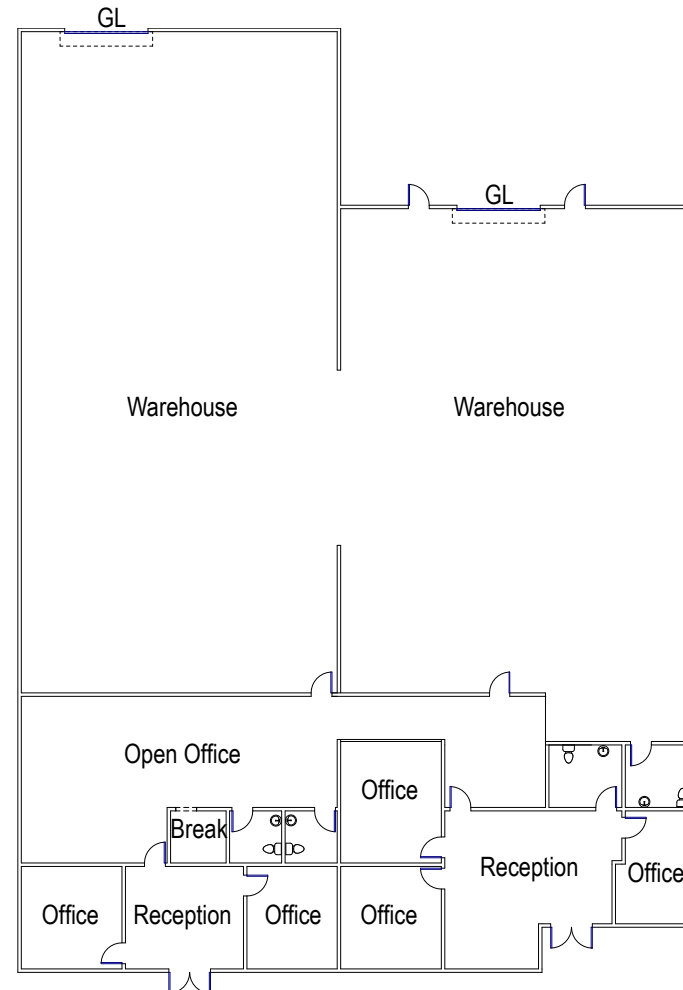
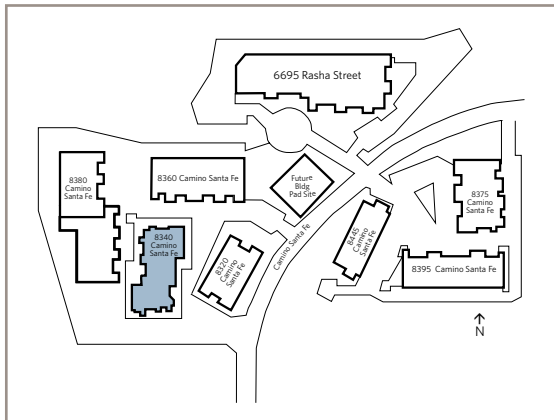
CAMINO SANTA FE BUSINESS PARK

8320, 8340, 8360, 8375, 8380, 8395, 8445
Camino Santa Fe, San Diego, CA 92121

Available Suite

8340 CAMINO SANTA FE SUITE D/E | 8,944 SF

- 30% office / 70% warehouse
- (2) grade level loading doors
- 20'-22' clear height
- Lease Rate: Negotiable
- NNNs = \$0.62 PSF/Month
- Divisible to 5,010 SF and 3,934 SF



**Floorplan to be Verified*

BRANT ABERG, SIOR

direct: 858.546.5464

mobile: 858.413.5600

brant.aberg@cushwake.com

CA Lic. 01773573

RYAN DOWNING, SIOR

direct: 858.546.5416

mobile: 760.840.1164

ryan.downing@cushwake.com

CA Lic. 01955032

TRINITY CARSON

direct: 619.928.6034

mobile: 602.489.4876

trinity.carson@cushwake.com

CA Lic. 02343245



12830 El Camino Real, Suite 100 | San Diego, CA 92130
858.452.6500 | 858.630.6320 | cushmanwakefield.com



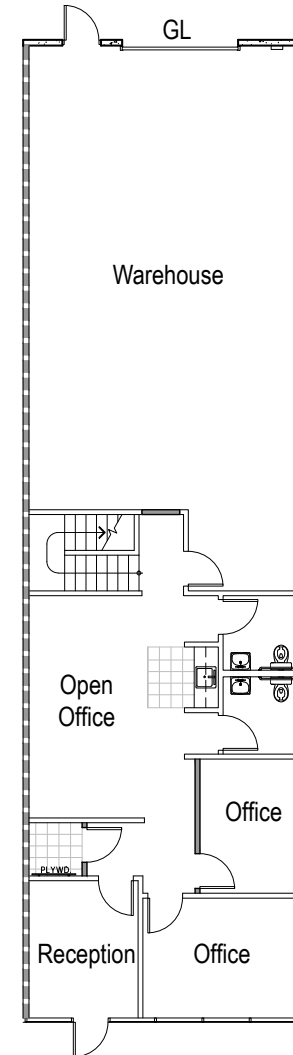
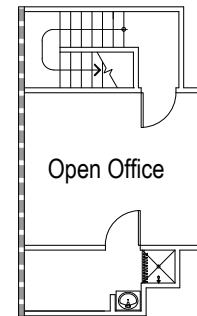
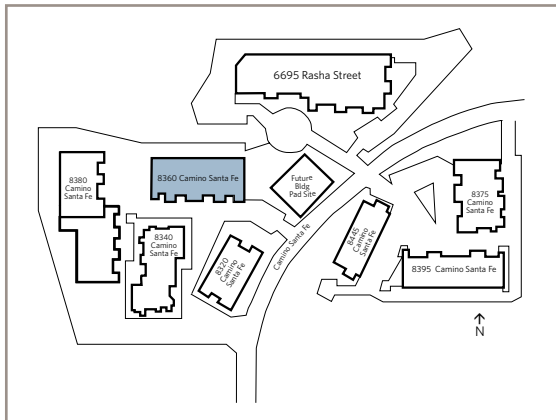
CAMINO SANTA FE BUSINESS PARK

8320, 8340, 8360, 8375, 8380, 8395, 8445
Camino Santa Fe, San Diego, CA 92121

Available Suite

8360 CAMINO SANTA FE SUITE D | 2,458 SF

- (1) grade level loading door
- Lease Rate: Negotiable
- Available Now
- NNNs = \$0.62 PSF/Month



**Floorplan to be Verified*

BRANT ABERG, SIOR

direct: 858.546.5464

mobile: 858.413.5600

brant.aberg@cushwake.com

CA Lic. 01773573

RYAN DOWNING, SIOR

direct: 858.546.5416

mobile: 760.840.1164

ryan.downing@cushwake.com

CA Lic. 01955032

TRINITY CARSON

direct: 619.928.6034

mobile: 602.489.4876

trinity.carson@cushwake.com

CA Lic. 02343245



12830 El Camino Real, Suite 100 | San Diego, CA 92130
858.452.6500 | 858.630.6320 | cushmanwakefield.com



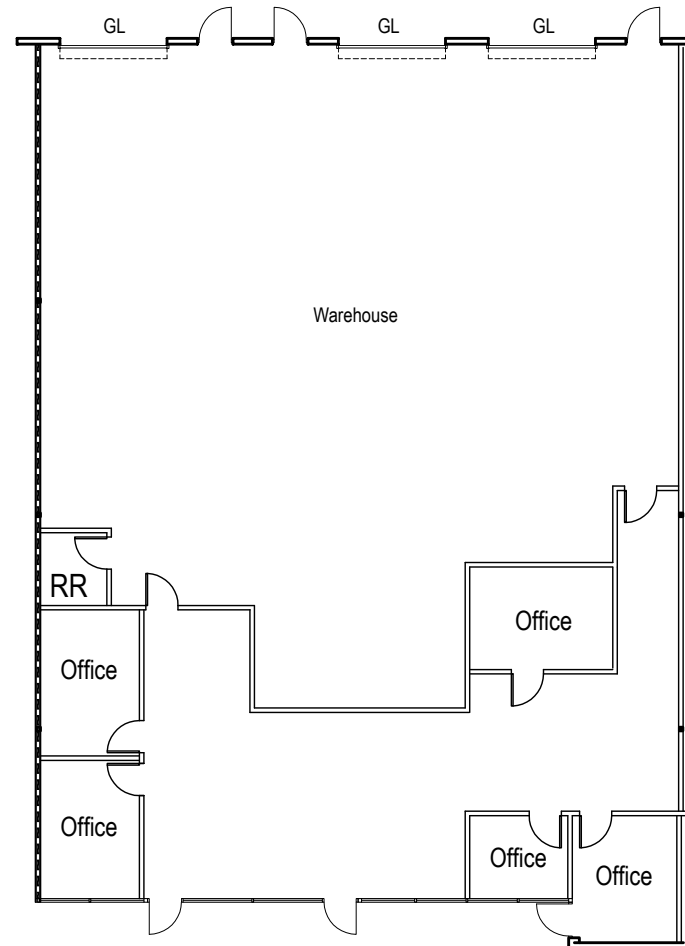
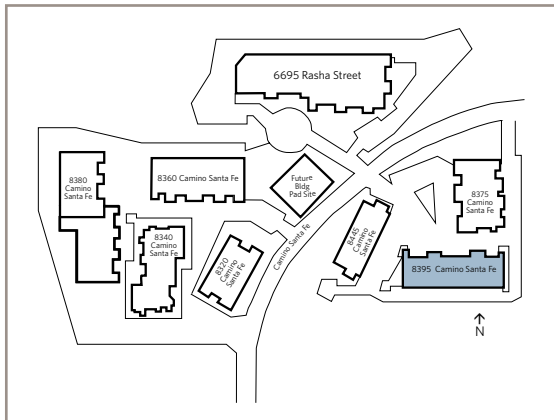
CAMINO SANTA FE BUSINESS PARK

8320, 8340, 8360, 8375, 8380, 8395, 8445
Camino Santa Fe, San Diego, CA 92121

Available Suite

8395 CAMINO SANTA FE SUITE B | 5,475 SF

- (3) grade level loading doors
- Heavy Power
- Construction now complete
- Available now
- Lease Rate: Negotiable
- NNNs = \$0.62 PSF/Month



**Floorplan to be Verified*

BRANT ABERG, SIOR

direct: 858.546.5464

mobile: 858.413.5600

brant.aberg@cushwake.com

CA Lic. 01773573

RYAN DOWNING, SIOR

direct: 858.546.5416

mobile: 760.840.1164

ryan.downing@cushwake.com

CA Lic. 01955032

TRINITY CARSON

direct: 619.928.6034

mobile: 602.489.4876

trinity.carson@cushwake.com

CA Lic. 02343245



12830 El Camino Real, Suite 100 | San Diego, CA 92130
858.452.6500 | 858.630.6320 | cushmanwakefield.com



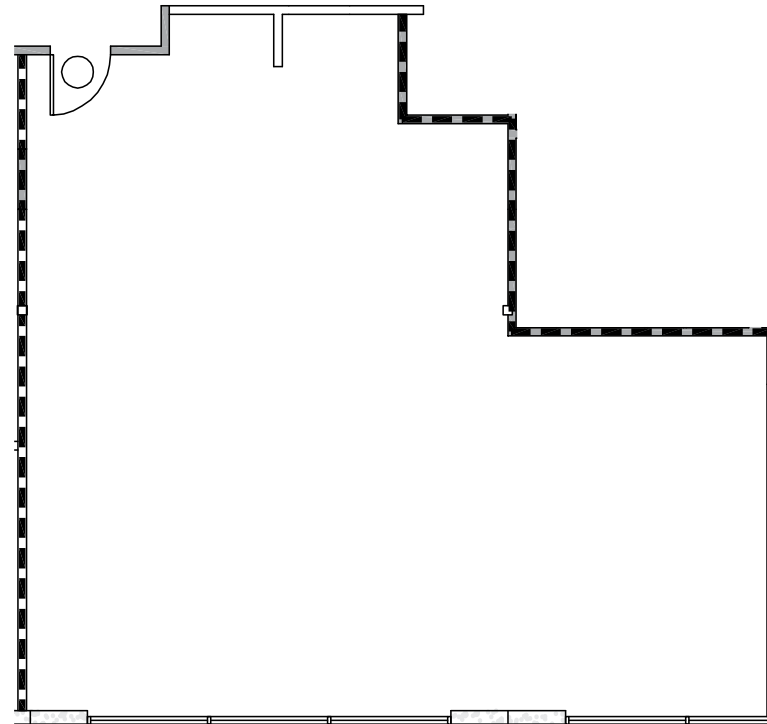
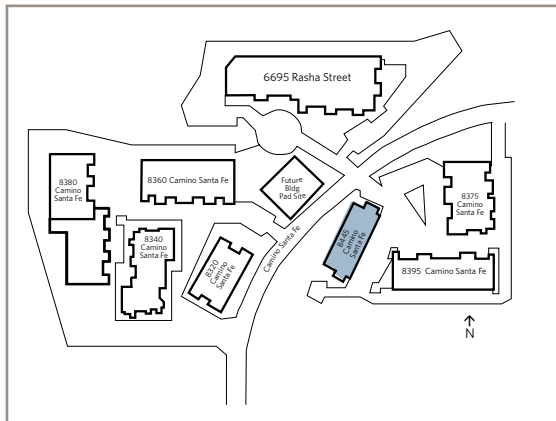
CAMINO SANTA FE BUSINESS PARK

8320, 8340, 8360, 8375, 8380, 8395, 8445
Camino Santa Fe, San Diego, CA 92121

Available Suite

**8445 CAMINO SANTA FE
SUITE 208 | 1,245 SF**

- Month-to-month and short term leases will be considered
- Open office
- Lease Rate: \$2,117/month + Electric



**Floorplan to be Verified*

BRANT ABERG, SIOR

direct: 858.546.5464

mobile: 858.413.5600

brant.aberg@cushwake.com

CA Lic. 01773573

RYAN DOWNING, SIOR

direct: 858.546.5416

mobile: 760.840.1164

ryan.downing@cushwake.com

CA Lic. 01955032

TRINITY CARSON

direct: 619.928.6034

mobile: 602.489.4876

trinity.carson@cushwake.com

CA Lic. 02343245

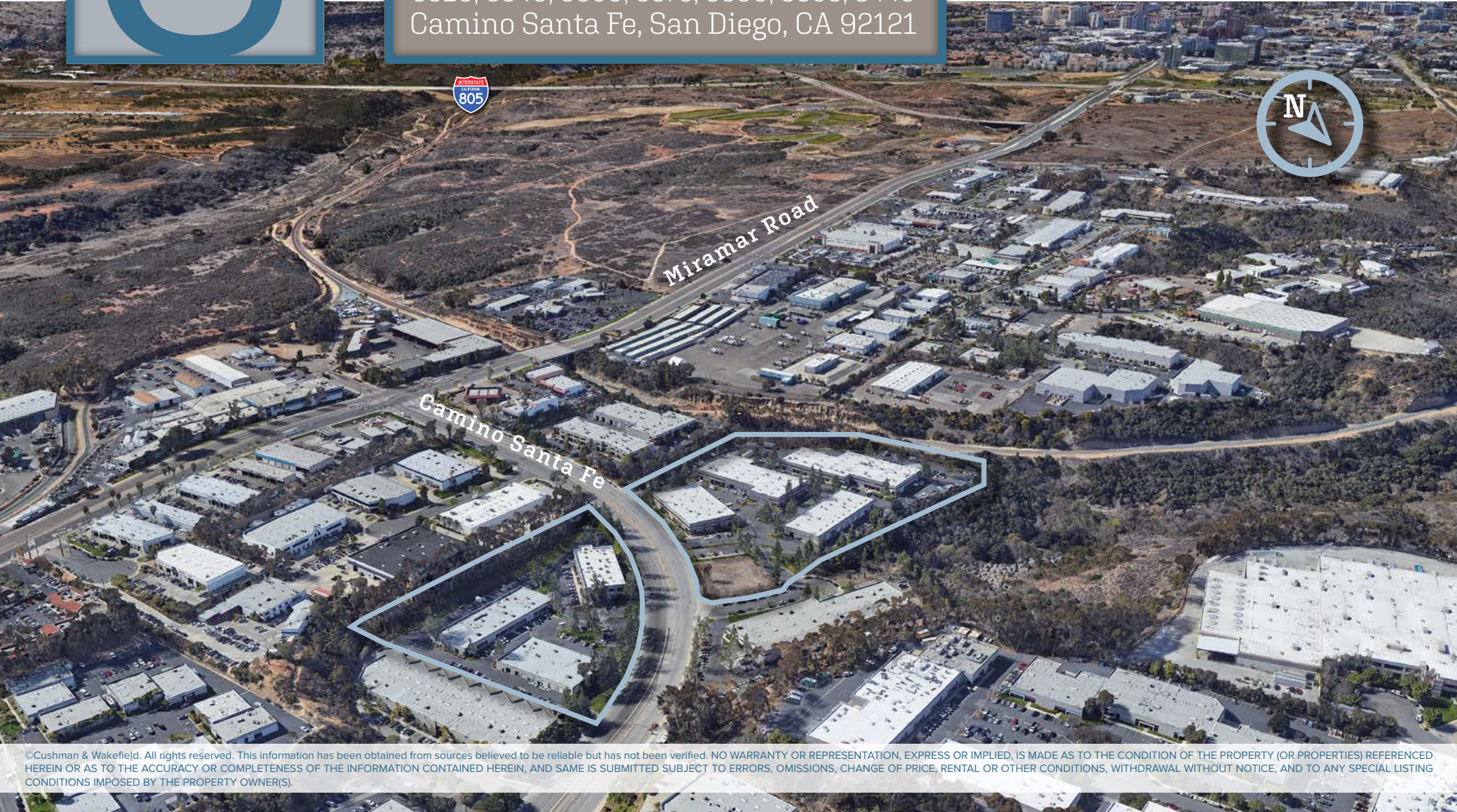


12830 El Camino Real, Suite 100 | San Diego, CA 92130
858.452.6500 | 858.630.6320 | cushmanwakefield.com



CAMINO SANTA FE BUSINESS PARK

8320, 8340, 8360, 8375, 8380, 8395, 8445
Camino Santa Fe, San Diego, CA 92121



©Cushman & Wakefield. All rights reserved. This information has been obtained from sources believed to be reliable but has not been verified. NO WARRANTY OR REPRESENTATION, EXPRESS OR IMPLIED, IS MADE AS TO THE CONDITION OF THE PROPERTY (OR PROPERTIES) REFERENCED HEREIN OR AS TO THE ACCURACY OR COMPLETENESS OF THE INFORMATION CONTAINED HEREIN, AND SAME IS SUBMITTED SUBJECT TO ERRORS, OMISSIONS, CHANGE OF PRICE, RENTAL OR OTHER CONDITIONS, WITHDRAWAL WITHOUT NOTICE, AND TO ANY SPECIAL LISTING CONDITIONS IMPOSED BY THE PROPERTY OWNER(S).

BRANT ABERG, SIOR

direct: 858.546.5464

mobile: 858.413.5600

brant.aberg@cushwake.com

CA Lic. 01773573

RYAN DOWNING, SIOR

direct: 858.546.5416

mobile: 760.840.1164

ryan.downing@cushwake.com

CA Lic. 01955032

TRINITY CARSON

direct: 619.928.6034

mobile: 602.489.4876

trinity.carson@cushwake.com

CA Lic. 02343245



12830 El Camino Real, Suite 100 | San Diego, CA 92130
858.452.6500 | 858.630.6320 | cushmanwakefield.com