



**CUSHMAN &
WAKEFIELD**

FOR LEASE

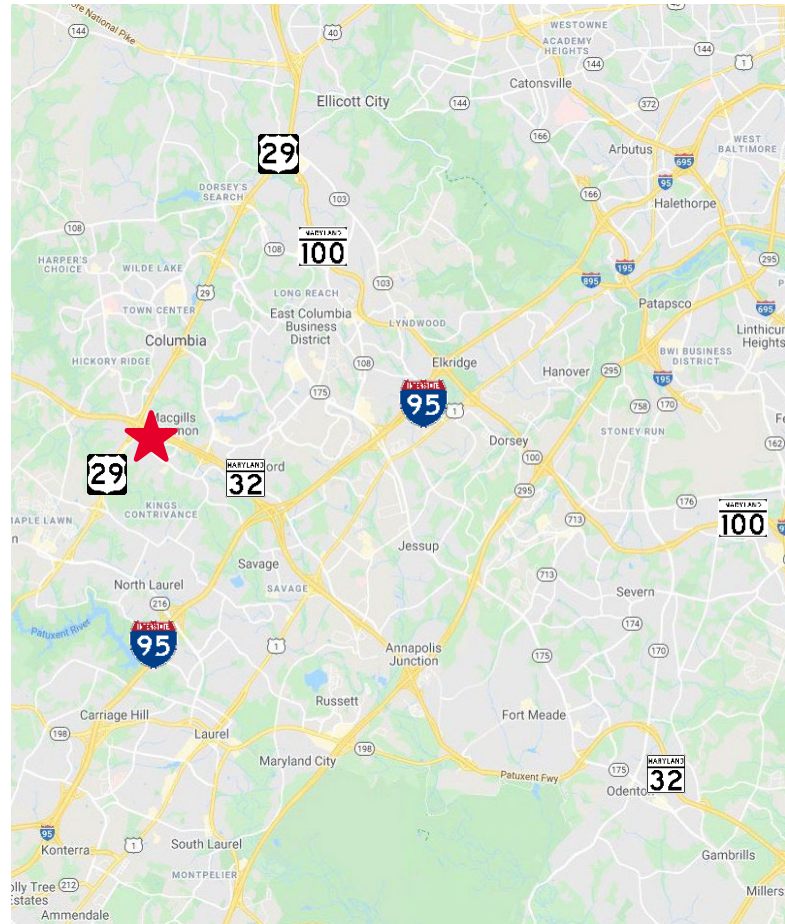
Rivers Center

8300-8335 Guilford Road / Columbia, MD



Features

- Five-building, single-story office and office/flex product
- Short drive from numerous and neighboring retail including Kings Contrivance Center, Snowden Square Shopping Center, Columbia Town Center, and Maple Lawn
- Well capitalized ownership providing professional and responsive “in-house” property management services
- Centrally located between major employment centers of Ft. Meade (NSA, DISA, US Cyber Command, etc.), JHU APL, Downtown Columbia, and BWI Airport
- Direct full service interchange access to MD Route 32 linking Rivers Center to Washington, DC and Baltimore by I-95, I-295, and US 29



Scott N. Matthews
Senior Director

+1 410 953 6697

scott.matthews@cushwake.com

Andrew J. Smith, CCIM
Senior Director

+1 410 953 6691

andrew.j.smith@cushwake.com



**CUSHMAN &
WAKEFIELD**

FOR LEASE

Rivers Center

8300-8335 Guilford Road / Columbia, MD

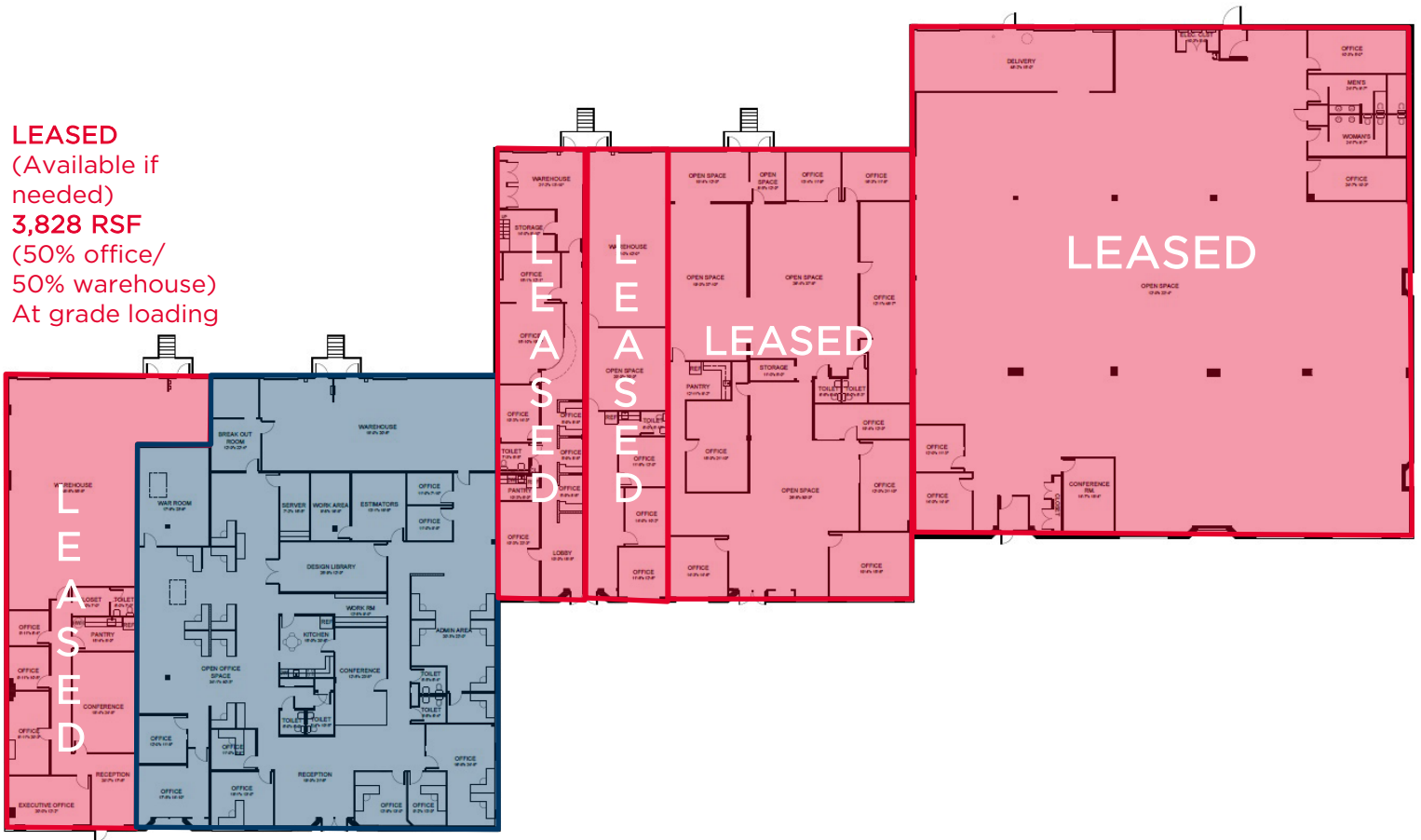
Full Building Floor Plan - 8300 Guilford Road

LEASED

(Available if
needed)

3,828 RSF

(50% office/
50% warehouse)
At grade loading



AVAILABLE

9,393 RSF

(75% office/ 25% warehouse)

2 dock-hi OHD's

3rd could be added

Scott N. Matthews
Senior Director

+1 410 953 6697

scott.matthews@cushwake.com

Andrew J. Smith, CCIM
Senior Director

+1 410 953 6691

andrew.j.smith@cushwake.com



**CUSHMAN &
WAKEFIELD**

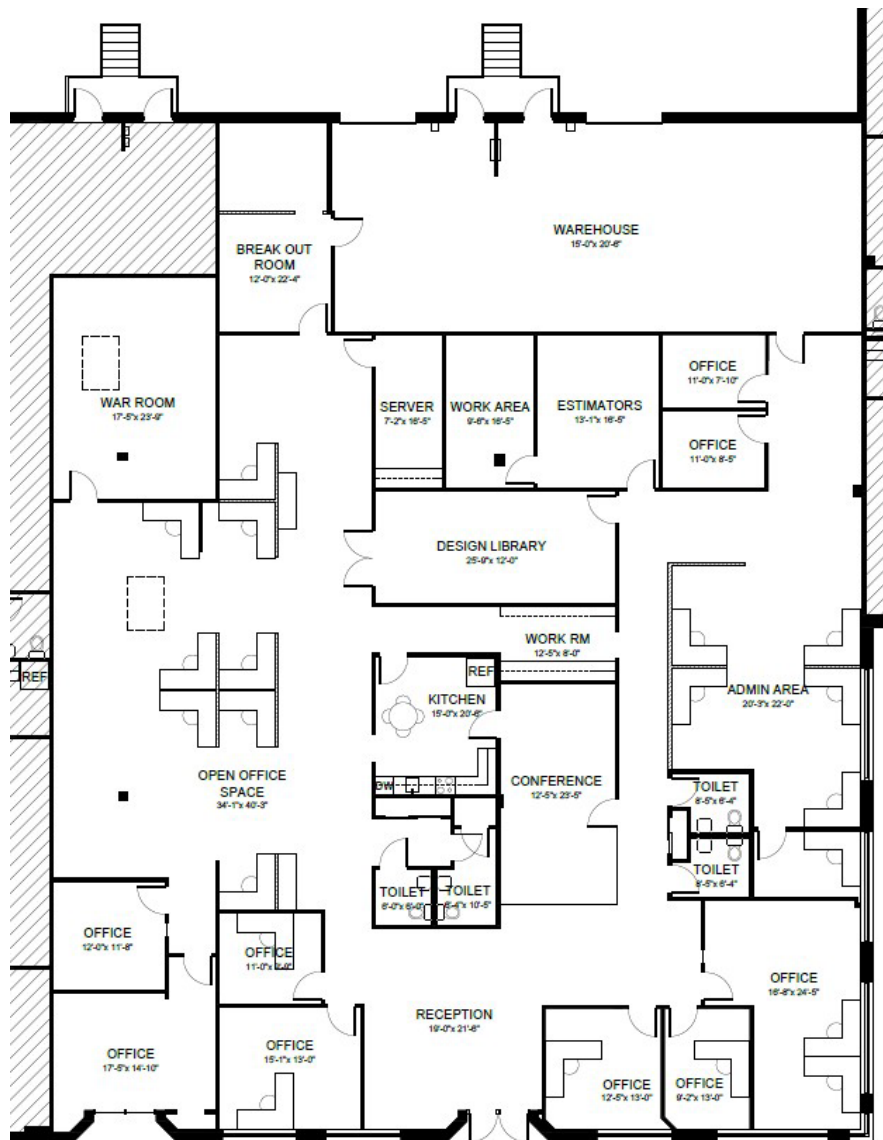
FOR LEASE

Rivers Center

8300-8335 Guilford Road / Columbia, MD

8300 Guilford Road - 9,393 RSF Office/Flex

- 9,393 SF of Flex Space
- 2-3 dock hi OHD's
- ~75% office space / 25% warehouse
- Space can be combined with an adjacent 3,828 SF suite for up to 13,221 SF which includes at-grade loading capabilities



Scott N. Matthews
Senior Director
+1 410 953 6697
scott.matthews@cushwake.com

Andrew J. Smith, CCIM
Senior Director
+1 410 953 6691
andrew.j.smith@cushwake.com



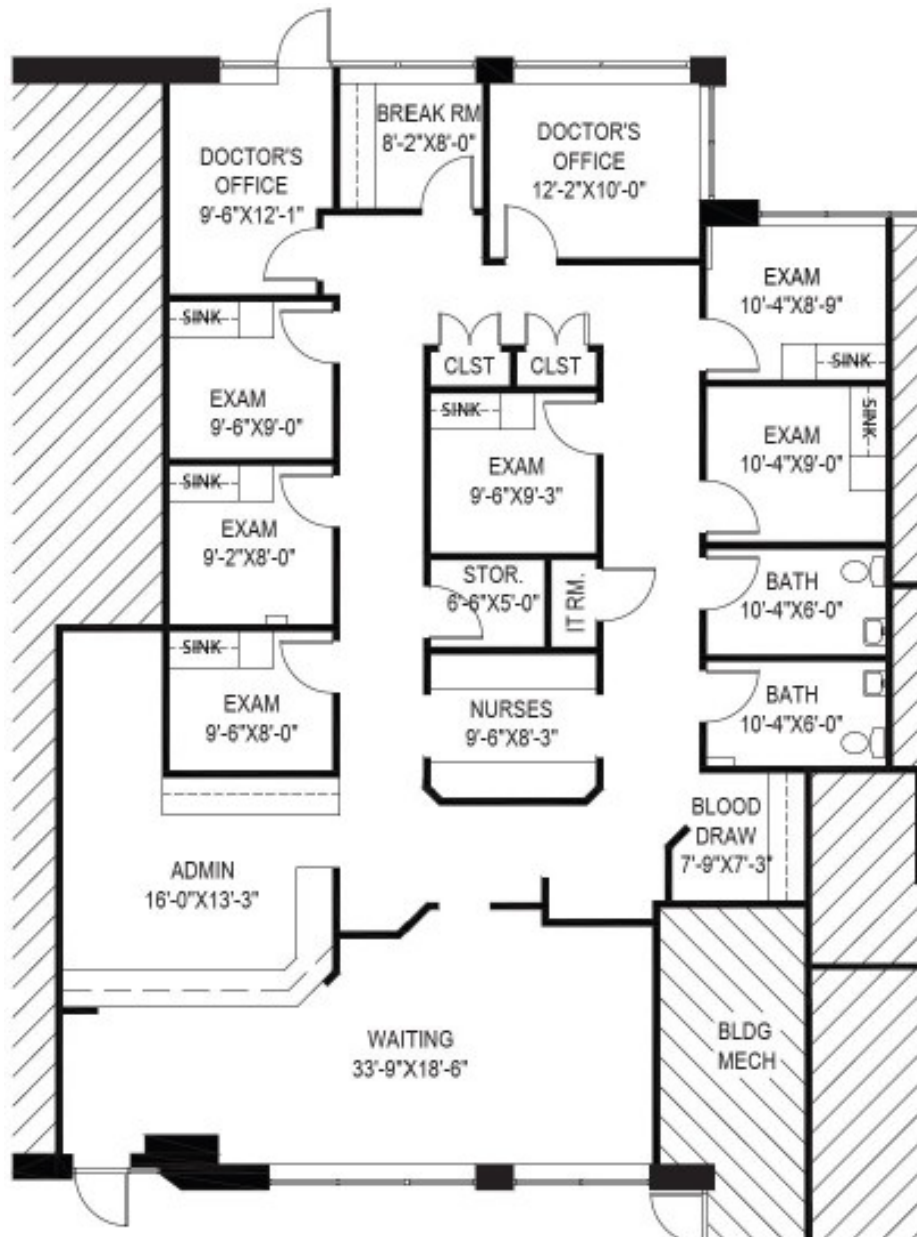
**CUSHMAN &
WAKEFIELD**

FOR LEASE

Rivers Center

8300-8335 Guilford Road / Columbia, MD

**8325 Guilford Road
2,414 RSF - Suite G
Medical/Office**



Scott N. Matthews
Senior Director

+1 410 953 6697

scott.matthews@cushwake.com

Andrew J. Smith, CCIM
Senior Director

+1 410 953 6691

andrew.j.smith@cushwake.com



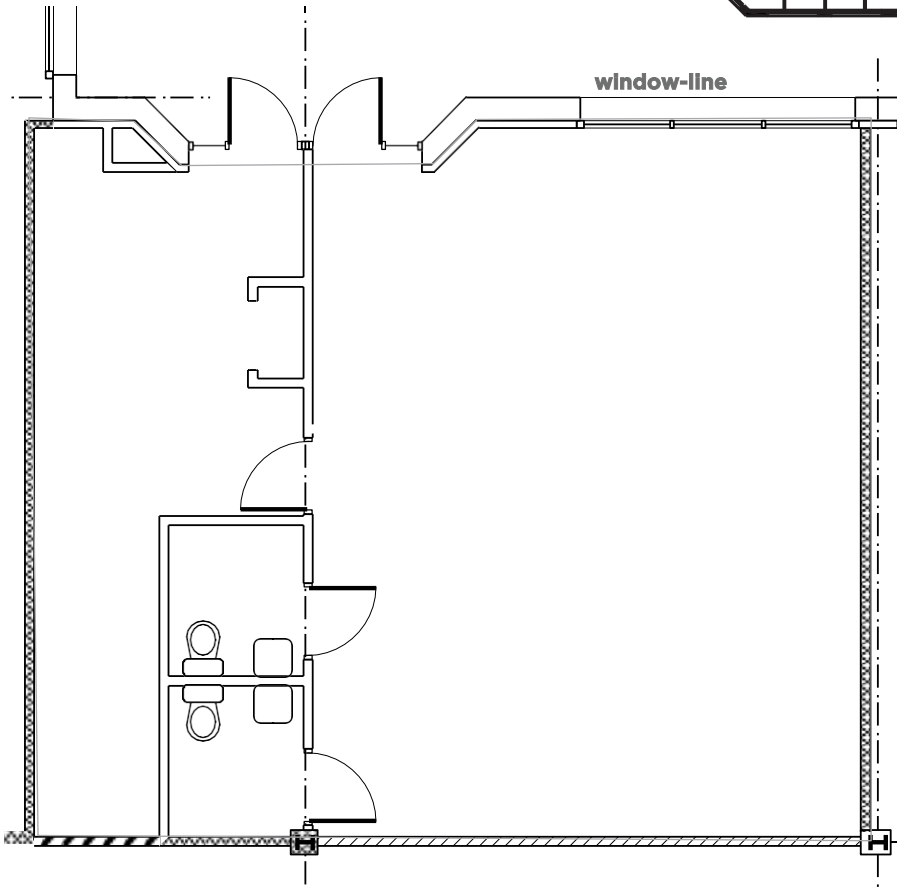
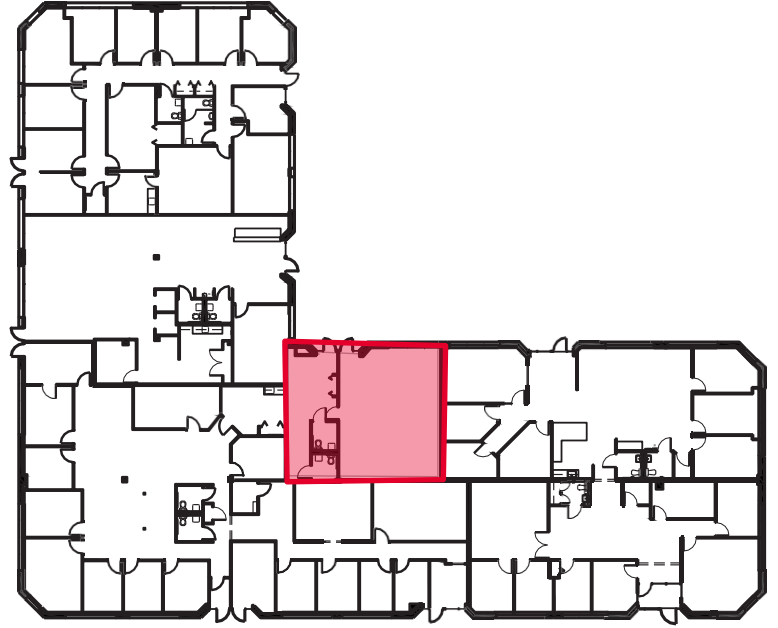
**CUSHMAN &
WAKEFIELD**

FOR LEASE

Rivers Center

8300-8335 Guilford Road / Columbia, MD

**8335 Guilford Road
1,253 RSF - Suite G
100% Office Space**



Scott N. Matthews
Senior Director

+1 410 953 6697

scott.matthews@cushwake.com

Andrew J. Smith, CCIM
Senior Director

+1 410 953 6691

andrew.j.smith@cushwake.com



**CUSHMAN &
WAKEFIELD**

FOR LEASE

Rivers Center

8300-8335 Guilford Road / Columbia, MD

Site Plan



www.riverscenter.com



Scott N. Matthews
Senior Director

+1 410 953 6697

scott.matthews@cushwake.com

Andrew J. Smith, CCIM
Senior Director

+1 410 953 6691

andrew.j.smith@cushwake.com

Cushman & Wakefield Copyright 2024. The information contained herein was lawfully obtained from sources we consider reliable. Cushman & Wakefield is not responsible and expressly disclaims all liability, for errors, omissions, prior sales, withdrawal from the market or change in price. Seller (or Lessor, as the case may be) and broker make no representation as to the environmental condition of the property and recommend Purchaser's (or Lessee's) independent investigation.