

1823 S. MERIDIAN ROAD
MERIDIAN, ID 83642

FOR SALE

MERIDIAN DEVELOPMENT LAND





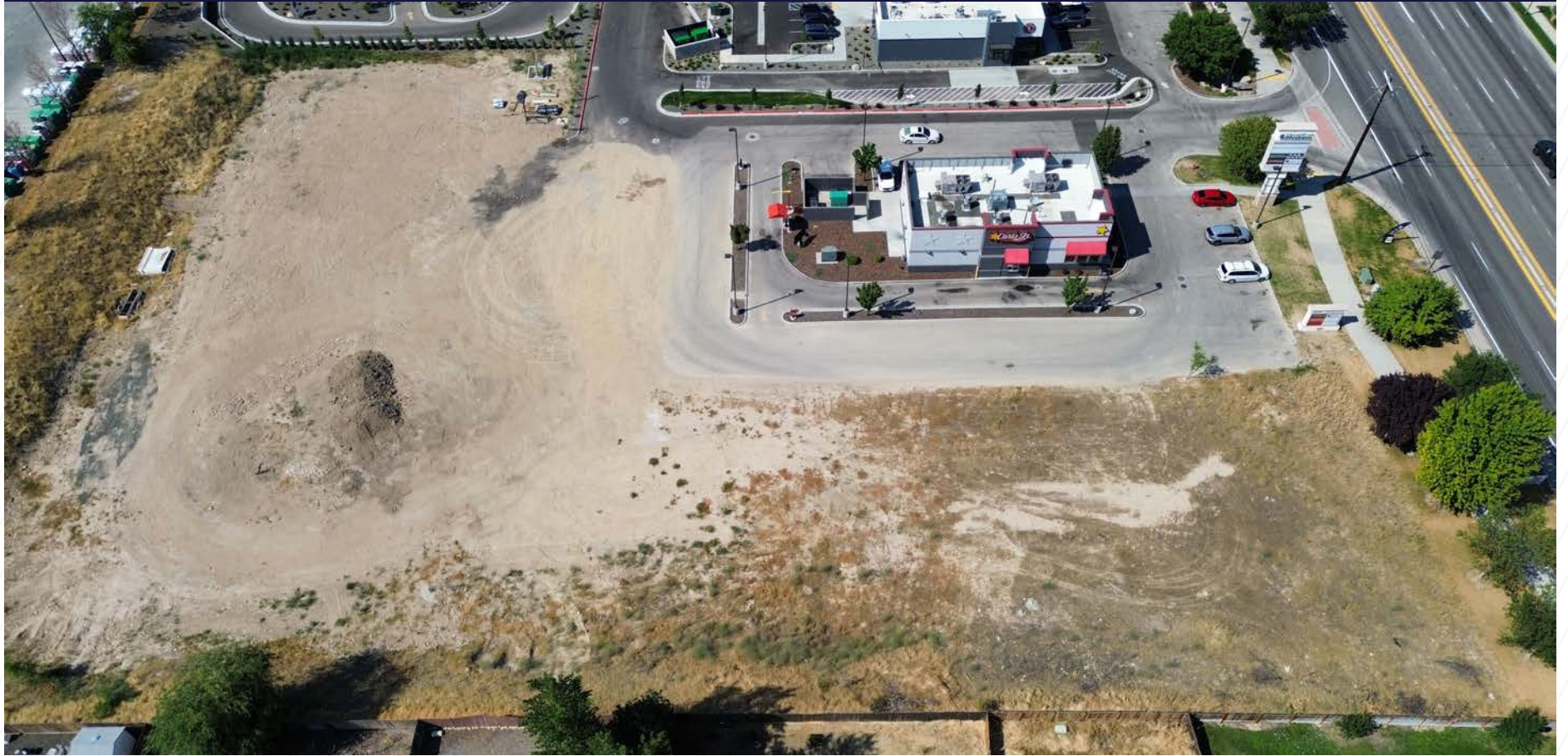
HIGHLIGHTS

- Ideal for hotels, restaurants, and retail establishments, this centrally located property offers convenient access to the interstate and a variety of nearby dining options
- Pad-ready with established cross-access
- General-Commercial zoning allows for a wide range of other uses
- Just off the Southwest Corner of Overland & Meridian Road
- Excellent Frontage

PROPERTY FEATURES

Price:	LOT 5 - \$980,000 (\$30.00/SF) LOT 3 - \$1,191,798 (\$18.00/SF)
Lot Size:	LOT 5 - 0.75 acres (32,670 SF) LOT 3 - 1.52 acres (66,211 SF)
Zoning:	C-G Commercial
Parcel Number:	R5652350065 & R5652350075
Utilities:	All available to site
Location:	SWC of Overland & Meridian Rd.

UNOBSTRUCTED VISIBILITY



1823 S. MERIDIAN ROAD





PRIME LOCATION WITH SURROUNDING AMENITIES

1823 S. MERIDIAN ROAD

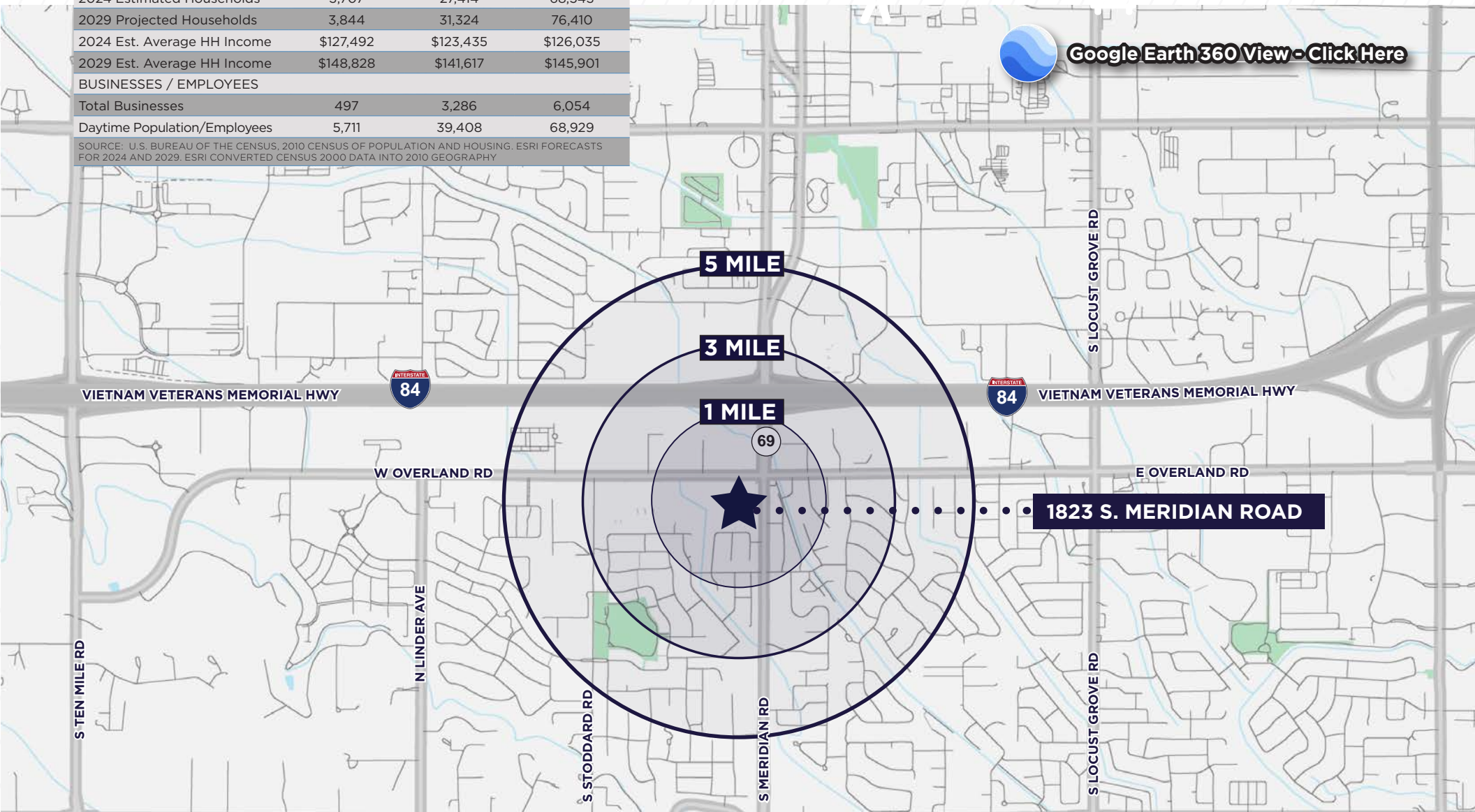
MERIDIAN, ID 83642

DEMOGRAPHICS	1 MILE	3 MILE	5 MILE
POPULATION			
2024 Estimated Population	10,038	72,992	192,139
2029 Projected Population	10,305	82,034	211,541
HOUSEHOLDS			
2024 Estimated Households	3,707	27,414	68,543
2029 Projected Households	3,844	31,324	76,410
2024 Est. Average HH Income	\$127,492	\$123,435	\$126,035
2029 Est. Average HH Income	\$148,828	\$141,617	\$145,901
BUSINESSES / EMPLOYEES			
Total Businesses	497	3,286	6,054
Daytime Population/Employees	5,711	39,408	68,929

SOURCE: U.S. BUREAU OF THE CENSUS, 2010 CENSUS OF POPULATION AND HOUSING. ESRI FORECASTS FOR 2024 AND 2029. ESRI CONVERTED CENSUS 2000 DATA INTO 2010 GEOGRAPHY



[Google Earth 360 View - Click Here](#)



YOU'RE NEVER FAR AWAY FROM THE REST OF THE WORLD

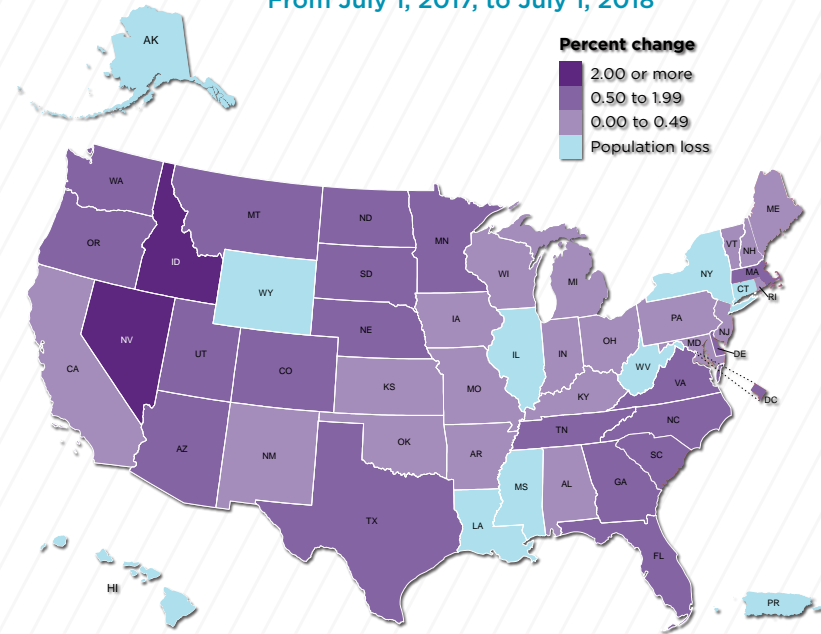
Meridian is strategically located in the heart of the Boise Metro and the diverse Pacific Northwest. The Treasure Valley is ripe with opportunities for entrepreneurs and start-ups, as well as established businesses. Come see where your place will be.

OFFICE? INDUSTRIAL? RETAIL? YES

With more than 16 million square feet of commercial real estate, Meridian offers spaces to suit any business operation. Class A office and medical buildings, manufacturing facilities and industrial parks, bustling retail centers, and land ready for development make up Meridian's robust business community.

IDAHO IS ONE OF THE NATION'S FASTEST GROWING STATES

Population Change for States (and Puerto Rico)
From July 1, 2017, to July 1, 2018



United States™
Census
Bureau

U.S. Department of Commerce
Economics and Statistics Administration

U.S. CENSUS BUREAU SOURCE: VINTAGE 2018 POPULATION ESTIMATES
census.gov WWW.CENSUS.GOV/PROGRAMS-SURVEYS/POPEST.HTML



CLICK HERE TO DOWNLOAD THE COMPLETE CITY OF MERIDIAN OVERVIEW:
<https://meridiancity.org/business/economic-development/>



CONTACT AGENT:

JENNIFER MCENTEE

Senior Director
Office | Capital Markets
+1 208 287 9495
jennifer.mcentee@cushwake.com

BREE WELLS

Director
Office | Capital Markets
+1 208 287 9492
bree.wells@cushwake.com

BRAYDON TORRES

Associate
Office | Capital Markets
+1 208 207 9485
braydon.torres@cushwake.com

©2024 Cushman & Wakefield. All rights reserved. The information contained in this communication is strictly confidential. This information has been obtained from sources believed to be reliable but has not been verified. NO WARRANTY OR REPRESENTATION, EXPRESS OR IMPLIED, IS MADE AS TO THE CONDITION OF THE PROPERTY (OR PROPERTIES) REFERENCED HEREIN OR AS TO THE ACCURACY OR COMPLETENESS OF THE INFORMATION CONTAINED HEREIN, AND SAME IS SUBMITTED SUBJECT TO ERRORS, OMISSIONS, CHANGE OF PRICE, RENTAL OR OTHER CONDITIONS, WITHDRAWAL WITHOUT NOTICE, AND TO ANY SPECIAL LISTING CONDITIONS IMPOSED BY THE PROPERTY OWNER(S). ANY PROJECTIONS, OPINIONS OR ESTIMATES ARE SUBJECT TO UNCERTAINTY AND DO NOT SIGNIFY CURRENT OR FUTURE PROPERTY PERFORMANCE.