

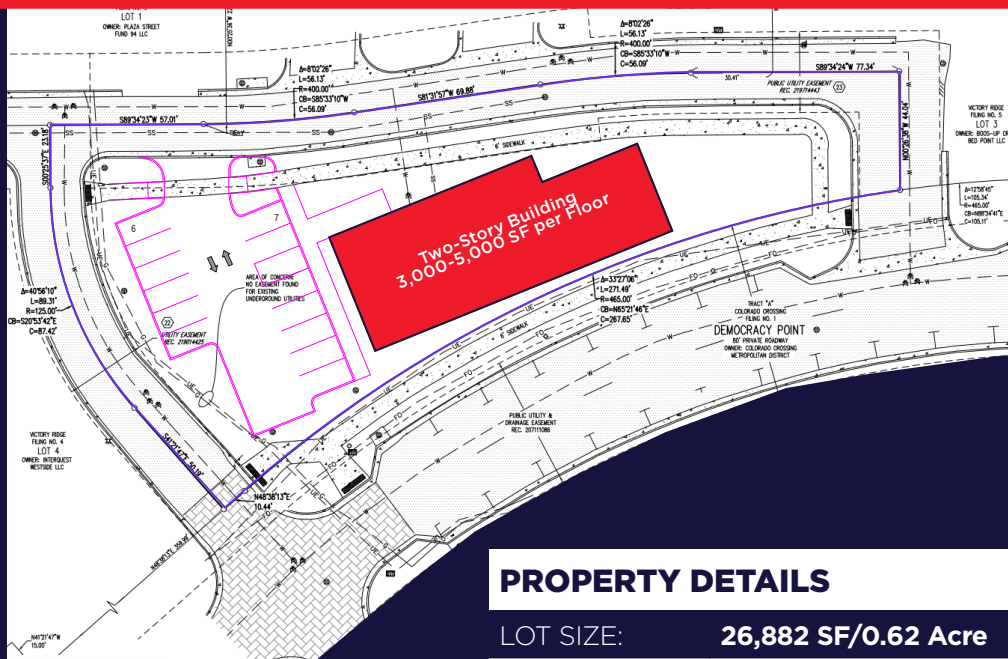
VICTORY RIDGE

1880 Democracy Pt, Colorado Springs, CO 80922



Colorado Springs
Commercial

LAND FOR SALE 26,882 SF / .62 ACRE



PRIME PROPERTY FOR SALE

With its excellent location just off I-25 on the southeast corner of Interquest & Voyager Parkway, Victory Ridge is a rapidly developing area in north Colorado Springs.

This mixed-use development offers an integrated blend of major retailers, office space, entertainment, residential, and hotel.

The site will also include a master planned development to include residential, townhomes, condos, apartments, and a huge neighborhood park.

PROPERTY DETAILS

LOT SIZE:	26,882 SF/0.62 Acre
PARCEL #:	6220402010
SALE PRICE:	\$26.41/SF

PRICE REDUCTION

VICTORY RIDGE

1880 Democracy Pt, Colorado Springs, CO 80922

LAND FOR SALE 26,882 SF / .62 ACRE

FOR SALE



Demographics

	1 Mile	3 Mile	5 Mile
2024 Population	3,832	36,121	119,237
2022 Households	1,506	13,211	42,871
AVG. HH Income	\$146,887	\$149,737	\$133,683



CUSHMAN & WAKEFIELD

Colorado Springs Commercial

PATRICK KERSCHER

Senior Managing Director

O: +1 719 418 4065

patrick@coscommercial.com

DAVID SCHROEDER II

Director

O: +1 719 418 4066

dschroeder@coscommercial.com