

OFFICE SPACE FOR LEASE - 2ND FLOOR

6,062 RSF



2175 LAWRENCEVILLE HIGHWAY

2ND FLOOR, DECATUR, GA 30033



PROPERTY SPECIFICATION

BUILDING

AVAILABLE: 6,062 SF

FLOOR: 2nd Floor

PARKING RATIO: 3.42/1,000 SF

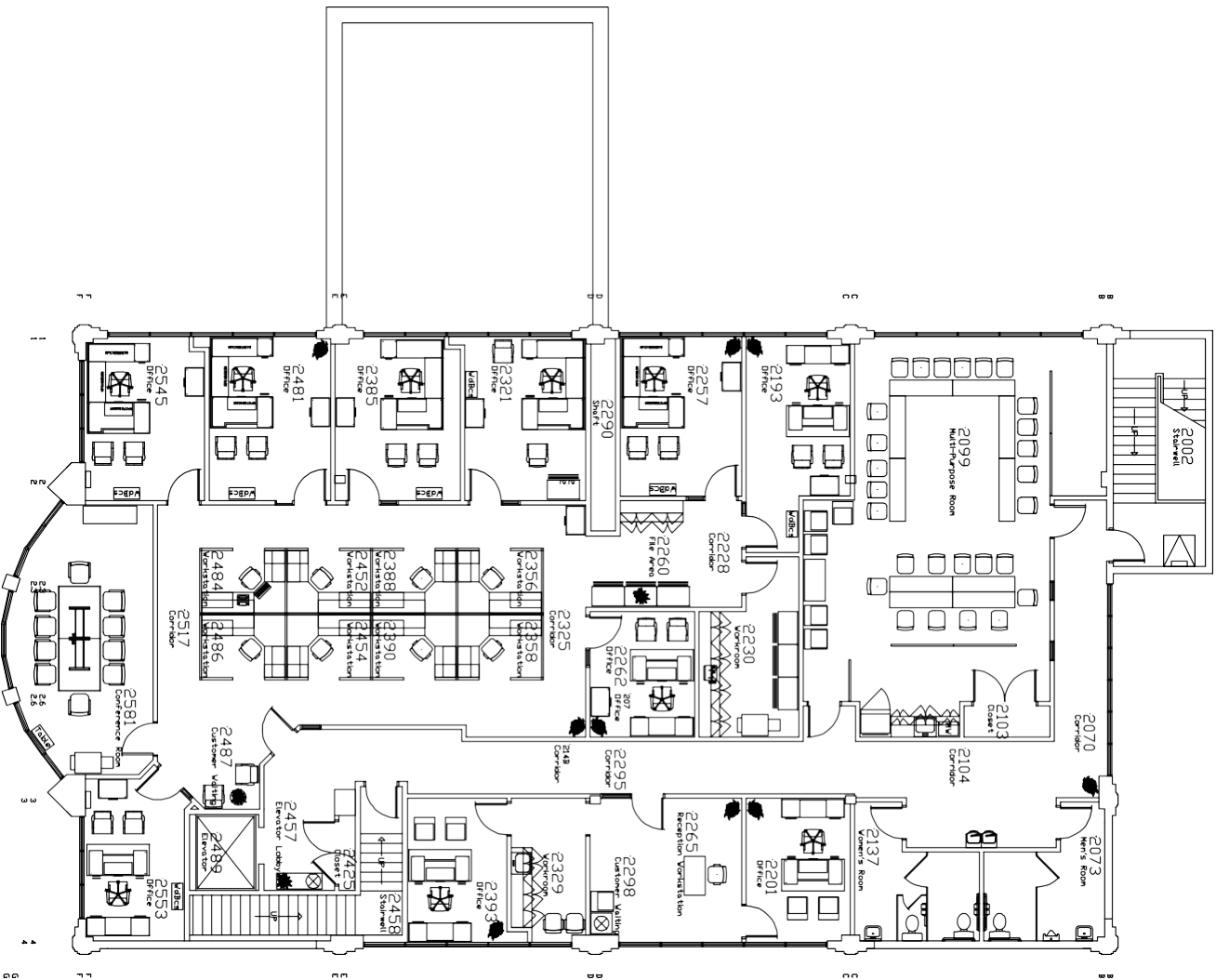
RENT \$19.00 SF/ Full Service

Truist Bank Branch on Ground Floor

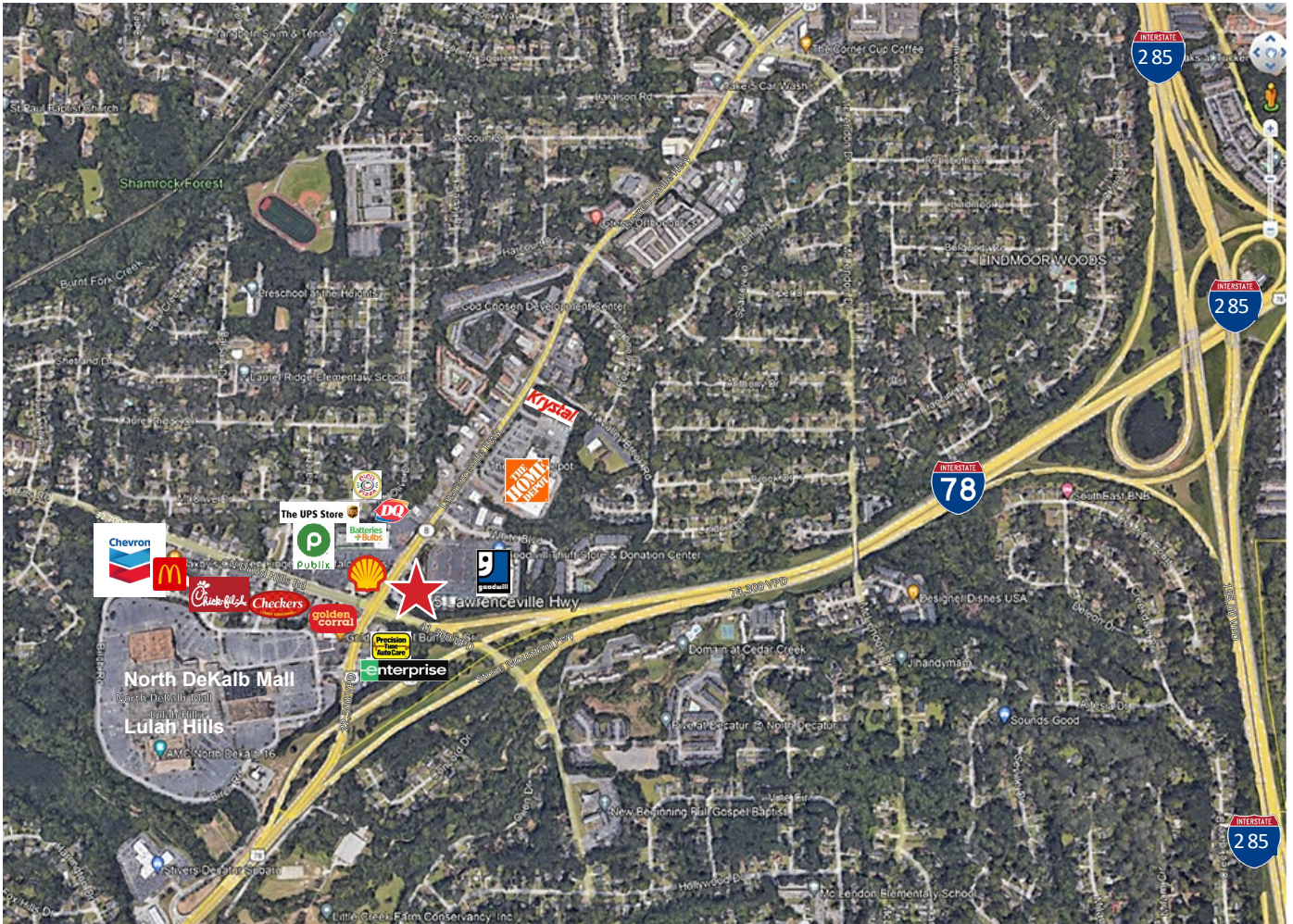
BUILDING NOTES:

- Signage Available
- Elevator Access
- FF&E included

FLOOR PLAN



AMENITY MAP



CONTACT INFORMATION

Dean McNaughton
Senior Director
Direct: +1 404 853 5363
Mobile: +1 404 402 3373
dean.mcnaughton@cushwake.com

Peter L. Glover
Senior Director Brokerage Services
Direct: +1 404 853 5379
Mobile: +1 404 273 4464
peter.glover@cushwake.com

1180 Peachtree Street NE, Suite 3100
Atlanta, GA 30309
+1 404 875 1000
cushmanwakefield.com

