

269

WYCKOFF  
MILLS ROAD

EAST WINDSOR, NJ

TURNPIKE FRONTAGE



FOR LEASE  
121,500 SF

Available Short or Long-Term



CUSHMAN &  
WAKEFIELD





## // BUILDING SPECS

### TOTAL SIZE

121,500 SF on 14.07 Acres

### TOTAL AVAILABLE

121,500 SF

### OFFICE AREA

1,400 SF (2nd FL)  
500 SF Shipping Office

### CEILING HEIGHT

42' Clear

### LOADING DOORS

27

### DRIVE-IN DOORS

1

### COLUMN SPACING

42' x 52.5'

### POWER

1,500 kVA / 2,000 Amps

### SPRINKLER

ESFR

### TAXES & CAM

**\$3.60/SF**

### ASKING LEASE RATE

Call for Pricing

### OCCUPANCY

May 2025

### COMMENTS

- Docks Seals, 40,000 lb Hydraulic Levelers, Bumpers with Lighting
- T-5 Fixtures 20fc with Motion Sensors
- 35 Car Parking
- Racking Available

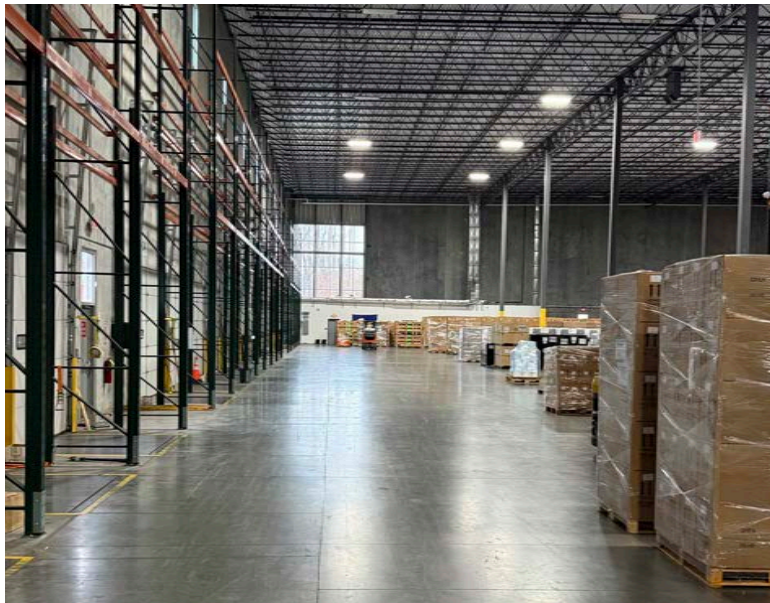


# // GALLERY

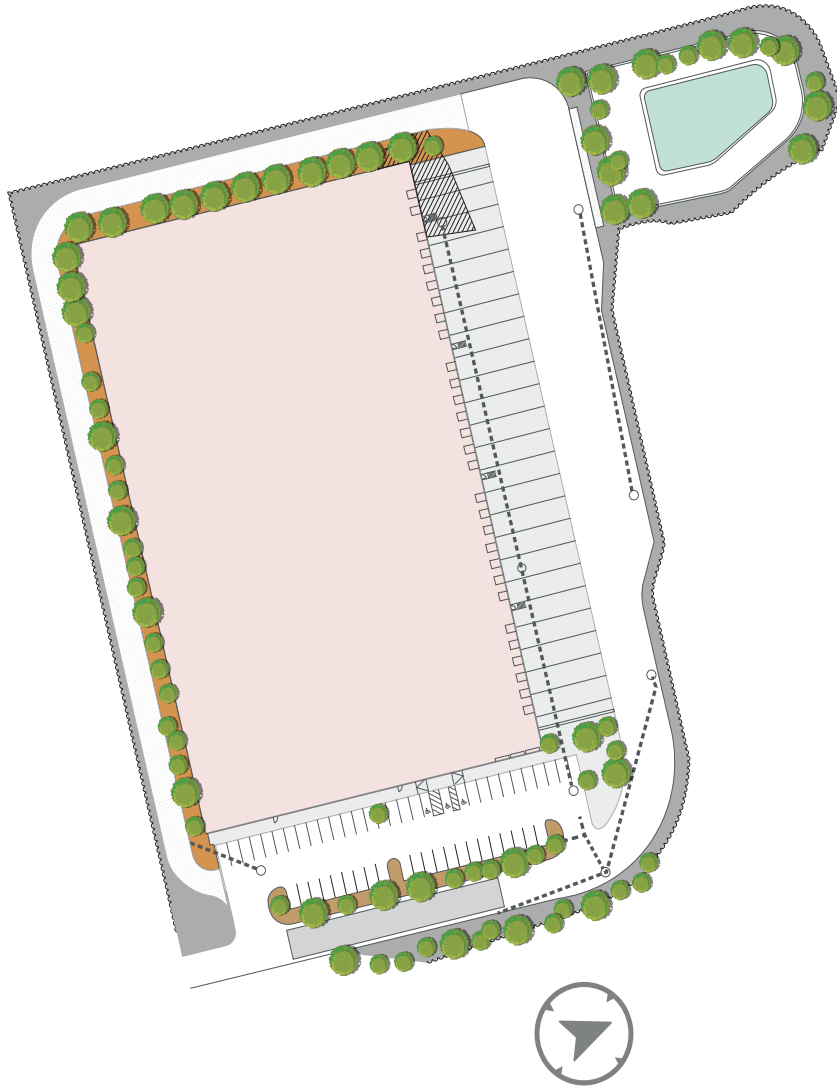




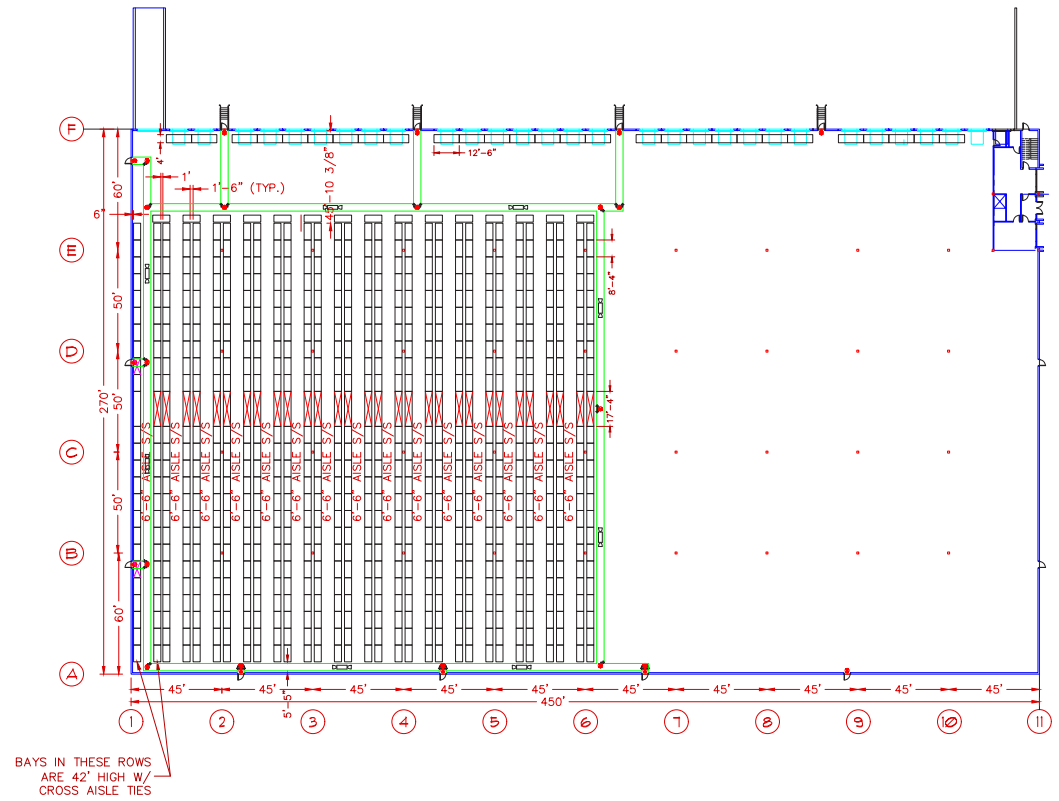
# // GALLERY



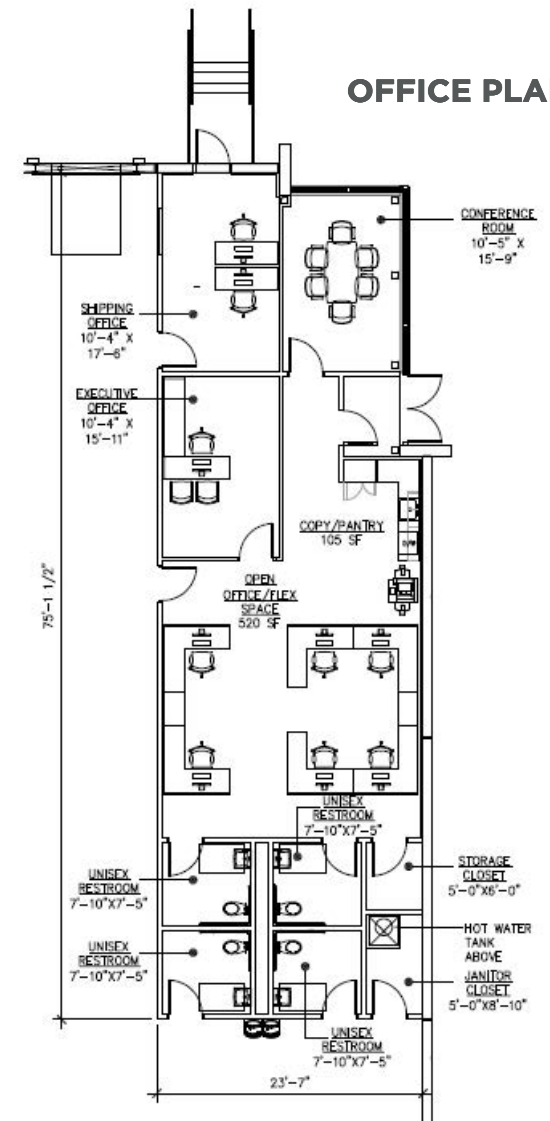
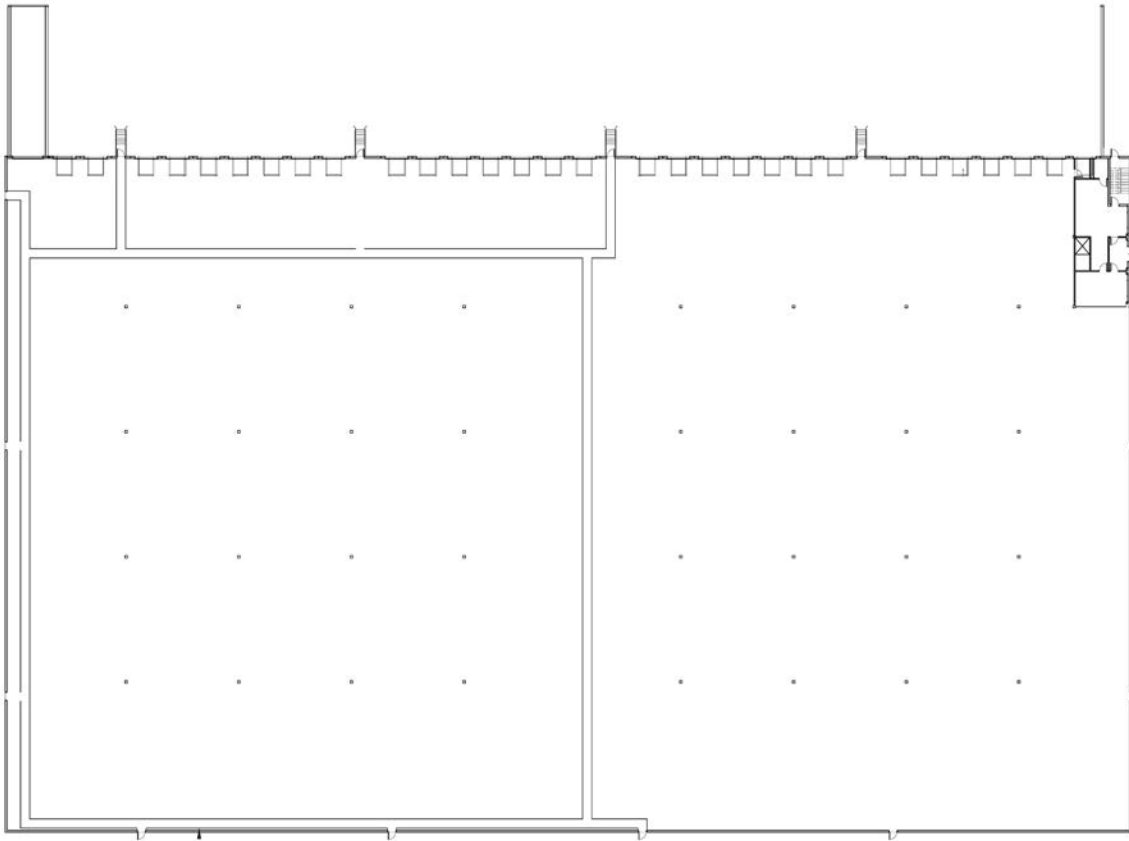
# // SITE PLAN



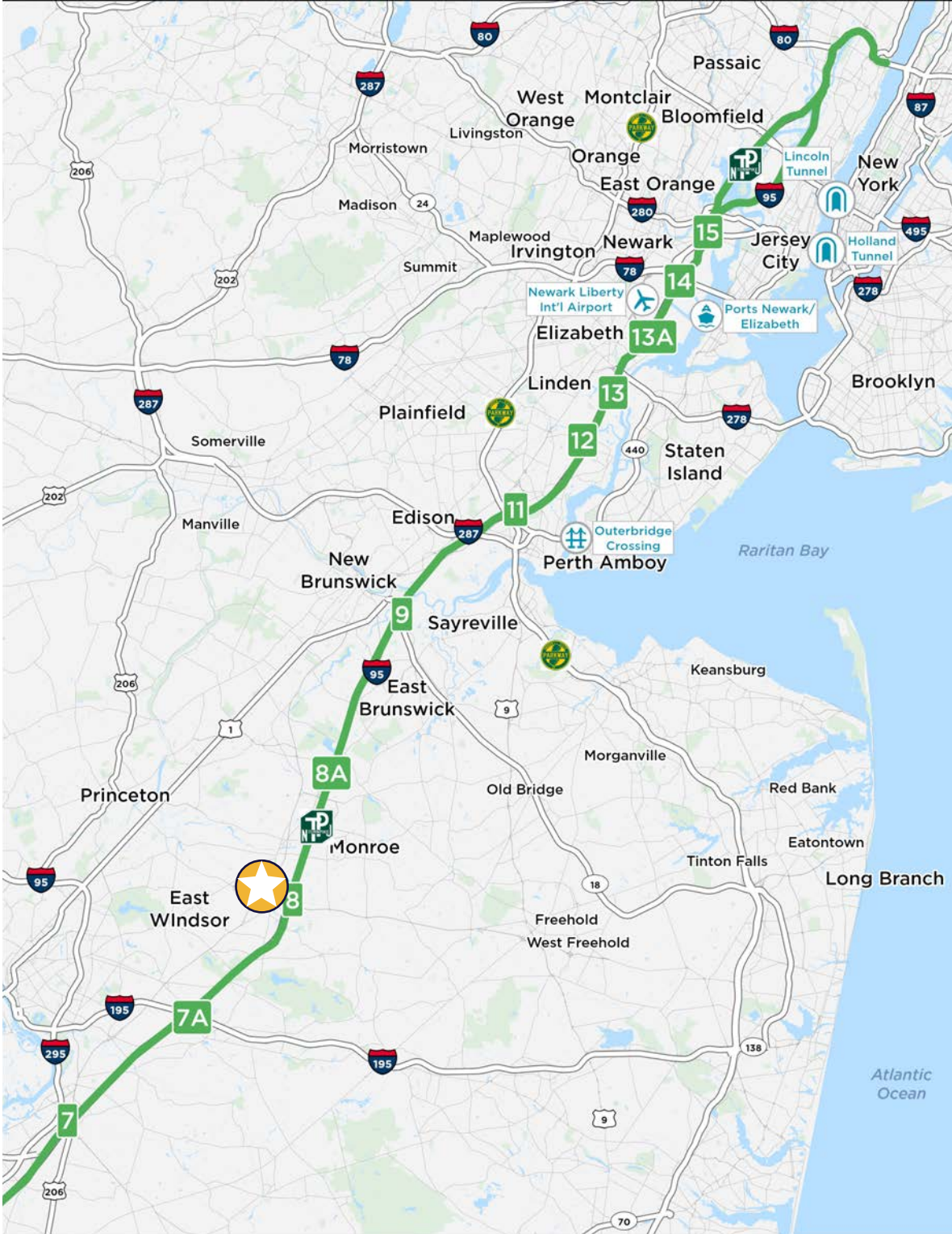
# // RACKING PLAN



# // FLOOR PLANS







## // EXITS & DRIVING DISTANCES

<b>NJ Turnpike Exit 8</b>	0.5 mi
<b>Route 287</b>	28.0 mi
<b>Outerbridge Crossing</b>	28.3 mi
<b>Staten Island</b>	35.4 mi
<b>Route 78</b>	37.4 mi
<b>Ports Newark/Elizabeth</b>	42.0 mi
<b>Holland Tunnel</b>	48.3 mi
<b>Philadelphia</b>	48.3 mi
<b>Lincoln Tunnel</b>	52.3 mi
<b>Manhattan</b>	53.0 mi
<b>GW Bridge</b>	55.9 mi



# 269

## WYCKOFF MILLS ROAD

EAST WINDSOR, NJ



### CONTACT

**Charles Fern**

+1 732 243 3101

[chuck.fern@cushwake.com](mailto:chuck.fern@cushwake.com)

**Jason Barton, SIOR**

+1 732 243 3104

[jason.barton@cushwake.com](mailto:jason.barton@cushwake.com)

99 Wood Avenue South, 8th Floor | Iselin, NJ 08830 | +1 732 623 4700

One Meadowlands Plaza, 7th Floor | East Rutherford, NJ 07073 | +1 201 935 4000

[cushmanwakefield.com](http://cushmanwakefield.com)

©2024 Cushman & Wakefield. All rights reserved. The information contained in this communication is strictly confidential. This information has been obtained from sources believed to be reliable but has not been verified. NO WARRANTY OR REPRESENTATION, EXPRESS OR IMPLIED, IS MADE AS TO THE CONDITION OF THE PROPERTY (OR PROPERTIES) REFERENCED HEREIN OR AS TO THE ACCURACY OR COMPLETENESS OF THE INFORMATION CONTAINED HEREIN, AND SAME IS SUBMITTED SUBJECT TO ERRORS, OMISSIONS, CHANGE OF PRICE, RENTAL OR OTHER CONDITIONS, WITHDRAWAL WITHOUT NOTICE, AND TO ANY SPECIAL LISTING CONDITIONS IMPOSED BY THE PROPERTY OWNER(S). ANY PROJECTIONS, OPINIONS OR ESTIMATES ARE SUBJECT TO UNCERTAINTY AND DO NOT SIGNIFY CURRENT OR FUTURE PROPERTY PERFORMANCE.