



HAWKER INDUSTRIAL PARK

21, 722040 Range Road 51, County of Grande Prairie No. 1, AB

8.99 ACRES | FRONTAGE TO HIGHWAY 43

Cushman & Wakefield Edmonton is independently owned and operated / A Member of the Cushman & Wakefield Alliance. No warranty or representation, express or implied, is made to the accuracy or completeness of the information contained herein, and same is submitted subject to errors, omissions, change of price, rental or other conditions, withdrawal without notice, and to any special listing conditions imposed by the property owner(s). As applicable, we make no representation as to the condition of the property (or properties) in question. JUNE 2025

Andy Horvath
Partner
780-908-3353
andy.horvath@cwedmonton.com

Nicole Stewart
Team Coordinator, Unlicensed
587-589-4215
nicole.stewart@cwedmonton.com

CUSHMAN & WAKEFIELD
Edmonton
Suite 2700, TD Tower
10088 - 102 Avenue
Edmonton, AB T5J 2Z1
www.cwedm.com

PROPERTY DETAILS

MUNICIPAL ADDRESS

21, 722040 Range Road 51, County of Grande Prairie No. 1, AB

LEGAL DESCRIPTION

Lot 8, Block 1, Plan 152-4985 Southeast Section 14 Township 72
Range 5 W6M

ZONING

RM-4 Highway Industrial District

MARKET

Hawker Industrial Park, County of Grande Prairie

SITE SIZE

8.99 Acres

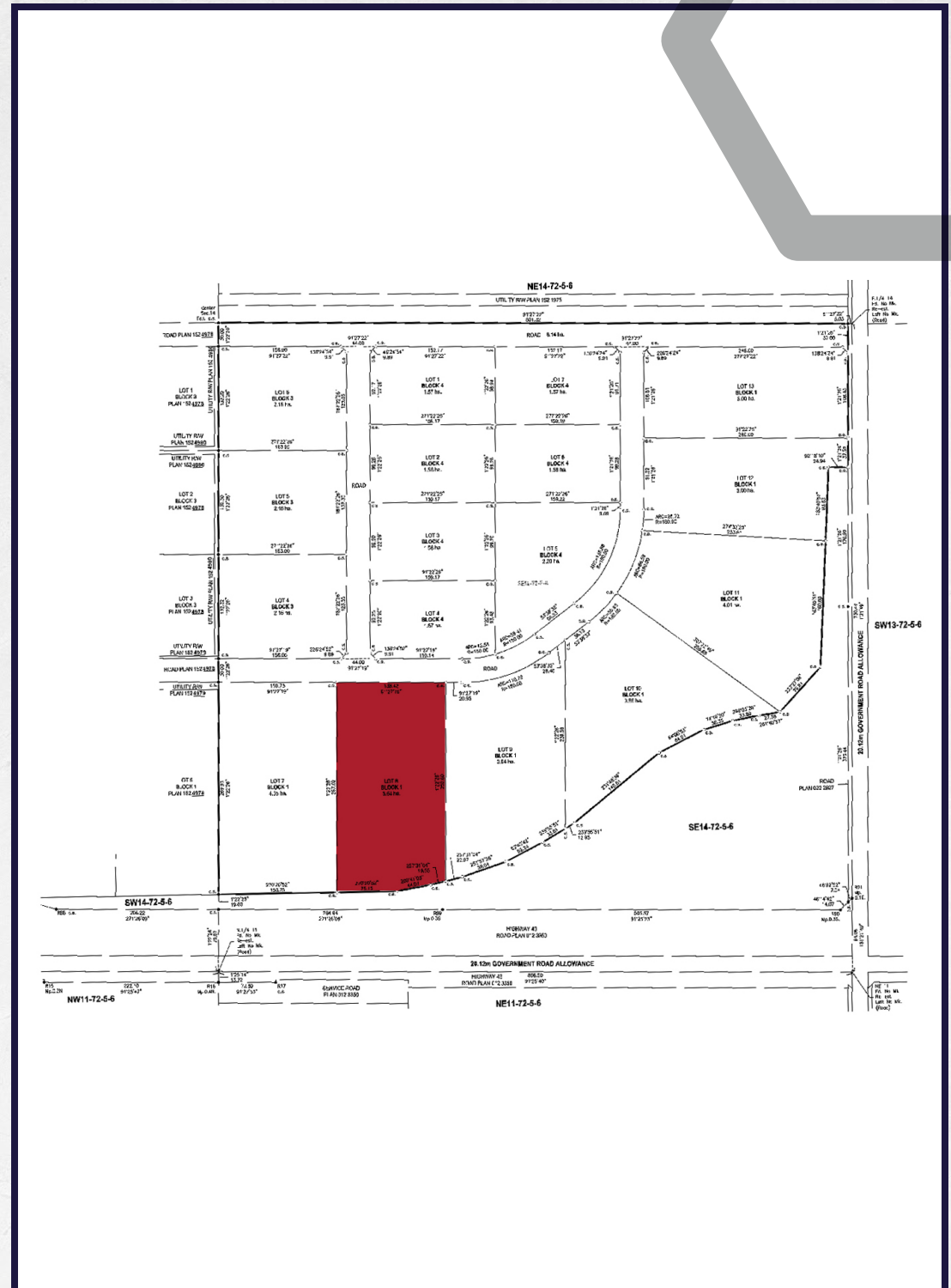
TAXES

\$24,103.81 (2022)

SALE PRICE
\$1,950,000

PROPERTY HIGHLIGHTS

- Located in Hawker Business Park, approximately 3 miles East of the municipal boundary of the Hamlet of Clairmont and approximately 2 miles Northeast of the municipal boundary of the City of Grande Prairie.
- Access to power, gas, telephone, municipal water and private septic services.
- Slightly irregular shaped parcel with +/- 454.13 feet (138.42m) of frontage and access from a subdivision road to the North, and +/- 455.08 feet (139.77m) of frontage on Highway 43 to the South.
- Depth of +/- 828.74 feet (252.60m) along the Eastern boundary and +/- 876.05 feet (267.02m) along the Western boundary of the parcel.



ZONING

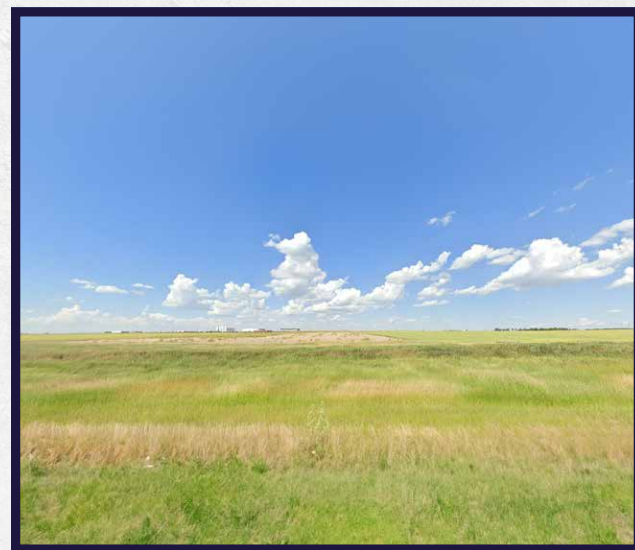
RM-4 HIGHWAY INDUSTRIAL DISTRICT

PERMITTED USES

- Automotive/Recreation Vehicle Sales and Rental
- Convenience Food Store
- Gas Bar
- Industry/Manufacturing, Small Scale
- Utilities

DISCRETIONARY USES

- Accessory Buildings and Structures
- Banks/Financial Institution
- Cannabis Production and/or Distribution - refer to Section 3 (28, 30, 31)
- Cannabis Retail Sales - refer to Section 3 (29-31)
- Caterer
- Clinic
- Data Processing Establishment
- Day Care Facility
- Drive-through Restaurant
- Duplicating Shop
- Eating Establishment
- Equipment Rental/Repair
- Farmers'/Flea Market
- Food and/or Beverage Service Facility
- Hotels
- Motels
- Offices accessory to the principal industrial use of the land or building
- Office or Office Building
- Oilfield Support Services
- Printing Establishment
- Public Uses
- Recreation Facility, Commercial
- Recreation Facility, Outdoor
- Recreation Facility, Indoor
- Restaurant
- Retail Store
- Signs
- Storage, Outdoor
- Taxi Cab Establishment
- Theatre, Drive-In
- Truck Depot
- Transport/Truck Operation
- Truck Stop
- Vehicle Wash
- Veterinary Clinic
- Warehouse
- Warehouse Store
- Truck & Manufactured Home Sales and Rentals



AERIAL VIEW

DRIVE TIME AREA

GRANDE PRAIRIE | 14 MINS

YELLOWHEAD TRAIL | 3 HRS AND 40 MINS

EDMONTON | 4 HRS AND 21 MINS

HIGHWAY 43 | 1 MIN

GRANDE PRAIRIE

SITE

Andy Horvath

Partner

780-908-3353

andy.horvath@cwedm.com

Nicole Stewart

Team Coordinator, Unlicensed

587-589-4215

nicole.stewart@cwedm.com

CUSHMAN & WAKEFIELD

Edmonton

Suite 2700, TD Tower

10088 - 102 Avenue

Edmonton, AB T5J 2Z1

www.cwedm.com



**CUSHMAN &
WAKEFIELD**

Edmonton

Cushman & Wakefield Edmonton is independently owned and operated / A Member of the Cushman & Wakefield Alliance. No warranty or representation express or implied is made to the accuracy or completeness of the information contained herein, and same is submitted subject to errors, omissions, change of price, rental or other conditions, withdrawal without notice, and to any special listing conditions imposed by the property owner(s). As applicable, we make no representation as to the condition of the property for properties in question. December 4, 2023