



241 KING STREET EAST

Toronto, ON

Boutique Retail Opportunity For Lease On King Street East

WELCOME TO 241 KING STREET EAST

Located in the dynamic King Street East neighbourhood, 241 King Street East offers an exceptional retail leasing opportunity in a rapidly growing area. This space is well-suited for a variety of clean retail uses, providing excellent street visibility and access. With convenient access to major streetcar routes and close proximity to the Financial Core and St. Lawrence Market, 241 King Street East offers the perfect blend of connectivity and foot traffic.

DETAILS

SIZE	1,382 SF
NET RENT	Contact Listing Agents
ADDITIONAL RENT	\$28.86 PSF (Est. 2025)
TERM	3 - 5 Years
AVAILABILITY	March 1 st , 2025

HIGHLIGHTS

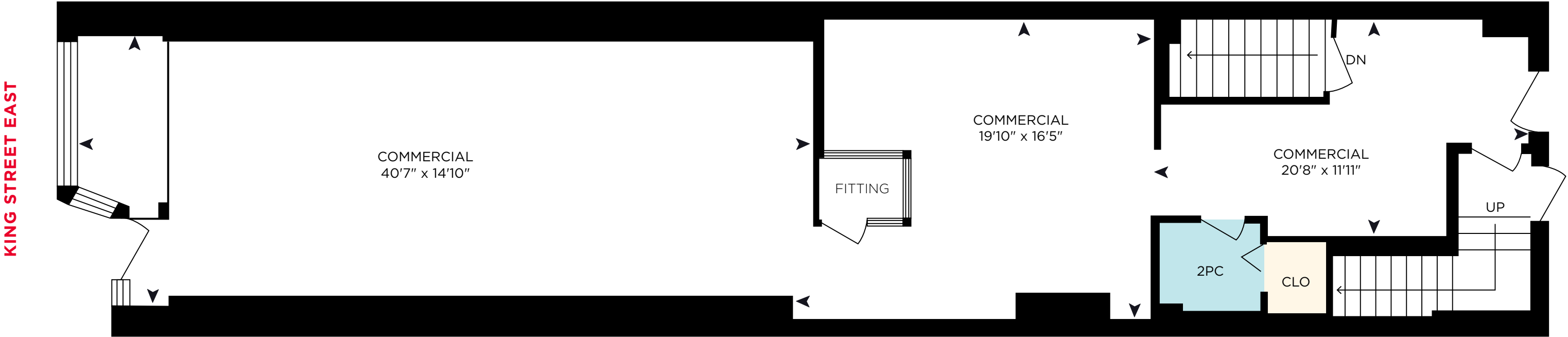
- Heritage storefront
- Unit features a skylight and open dry basement for storage
- Strong neighbouring retailers include Ardo Restaurant, Neo Coffee Bar, EQ3, and Design Within Reach
- Prime visibility with excellent signage opportunity on King Street East
- Steps to 504 King streetcar

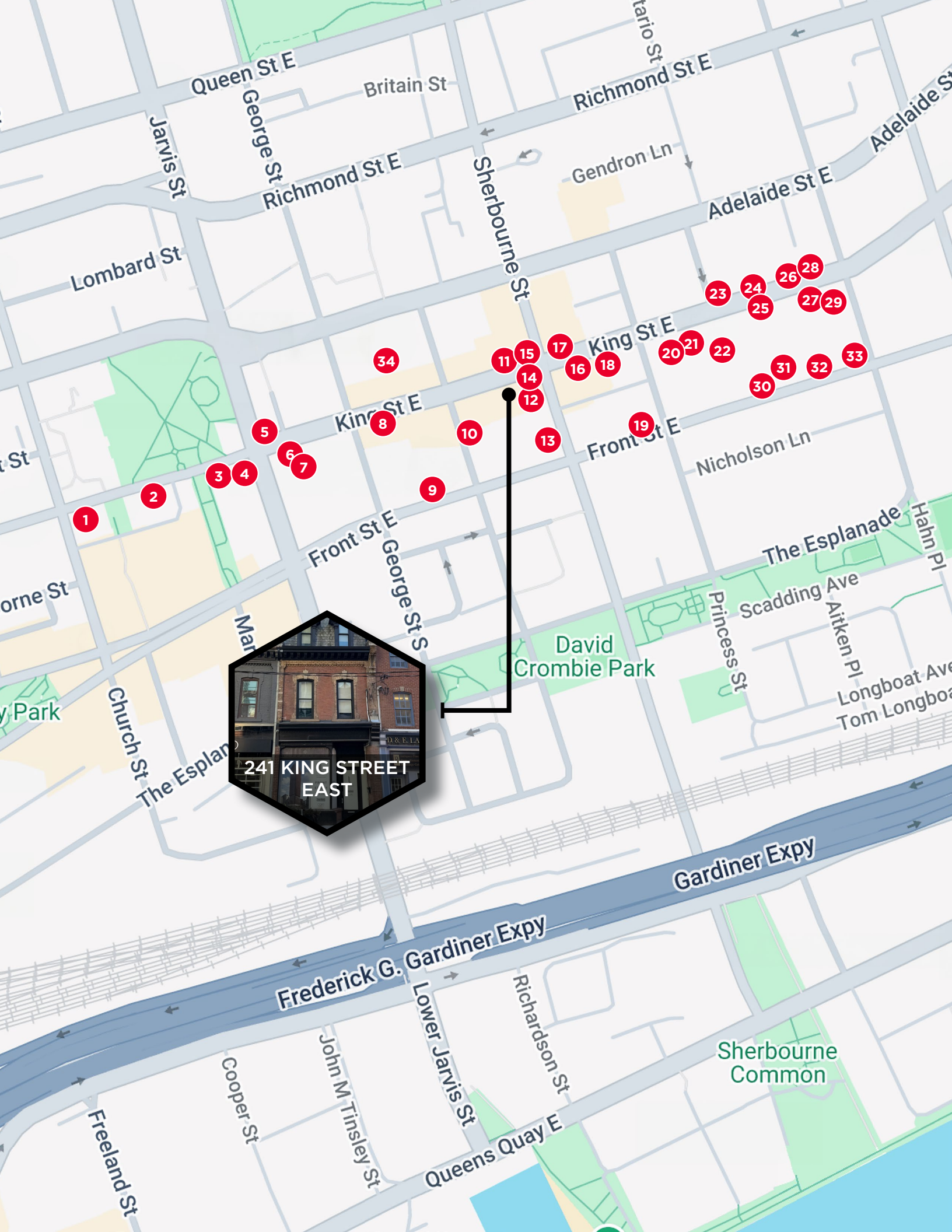
PROPERTY OVERVIEW



FLOOR PLAN

GROUND FLOOR - 1,382 SF













NEIGHBORHOOD OVERVIEW

NEIGHBOURHOOD AMENITIES

- | | | |
|-------------------------------|---------------------------------------|--|
| 1. Score on King | 16. Nari Sushi | 31. Dollerama |
| 2. Indochino | 17. Imperial Rug Galleries | 32. Body + Soul Fitness |
| 3. Biagio Ristorante | 18. The Chesterfield Shop | 33. Starbucks |
| 4. RBC | 19. Pet Valu | 34. George Brown Downtown Campus - 200 King St E |
| 5. Keilhauer Toronto Showroom | 20. National Bank | |
| 6. Beauchamp Art Gallery | 21. Rogers | |
| 7. Bar ARDO | 22. No Frills | |
| 8. Petit Dejeuner | 23. Bulthaup Toronto Inc | |
| 9. Museum of Illusions | 24. Sub-Zero, Wolf, and Cove Showroom | |
| 10. NEO Coffee Bar | 25. Rooster Coffee House | |
| 11. Design Within Reach | 26. Kiosk Design | |
| 12. ARDO Restaurant | 27. Pumpernickel's | |
| 13. Aquavato | 28. Klaus | |
| 14. Trianon Design Ltd | 29. Italinteriors | |
| 15. EQ3 | 30. LCBO | |

DEMOGRAPHICS (1KM)

- | | |
|---|---|
|  Population
62,954 |  Median Age
38 |
|  Daytime Population
161,721 |  Traffic Score
99 |
|  Total Households
36,056 |  Pedestrian Score
98 |
|  Avg. Household Income
\$121,349 |  Transit Score
92 |



161 Bay Street, Suite 1500
Toronto, ON M5J 2S1 | Canada
cushmanwakefield.ca

CARMEN SIEGEL

Associate Vice President
Direct: +1 416 359 2365
Mobile: +1 416 648 0451
carmen.siegel@cushwake.com

HANNAH KINNEY

Associate
Direct: +1 416 359 2390
Mobile: +1 647 294 0367
hannah.kinney@cushwake.com

CONTACT

©2025 Cushman & Wakefield ULC. All rights reserved. The information contained in this communication is strictly confidential. This information has been obtained from sources believed to be reliable but has not been verified. NO WARRANTY OR REPRESENTATION, EXPRESS OR IMPLIED, IS MADE AS TO THE CONDITION OF THE PROPERTY (OR PROPERTIES) REFERENCED HEREIN OR AS TO THE ACCURACY OR COMPLETENESS OF THE INFORMATION CONTAINED HEREIN, AND SAME IS SUBMITTED SUBJECT TO ERRORS, OMISSIONS, CHANGE OF PRICE, RENTAL OR OTHER CONDITIONS, WITHDRAWAL WITHOUT NOTICE, AND TO ANY SPECIAL LISTING CONDITIONS IMPOSED BY THE PROPERTY OWNER(S). ANY PROJECTIONS, OPINIONS OR ESTIMATES ARE SUBJECT TO UNCERTAINTY AND DO NOT SIGNIFY CURRENT OR FUTURE PROPERTY PERFORMANCE.

