

A modern, multi-story office building with a prominent glass-enclosed staircase and entrance area. The building is illuminated with warm interior lights and exterior spotlights, creating a glowing effect against the dark blue twilight sky. The architecture features large glass panels and concrete or metal cladding. A small tree is visible in front of the glass entrance.

767 SF FOR LEASE

SHORELINE OFFICE SPACE

1649 WEST SHORELINE DRIVE, BOISE, IDAHO

SHORELINE OFFICE SPACE

1649 West Shoreline Drive, Boise, Idaho

767 SF FOR LEASE



LISTING DETAILS

- Second floor office space available
- Space includes large windows that provide natural light and offer spectacular views of downtown Boise and the foothills
- Shared meeting room facilities available for tenant use, seats up to 100 people
- LEED C2 2.0 Registered building
- Close to downtown Boise, the river street post office, the greenbelt and the Boise River
- Outside patio area available to tenants
- Contact agents to schedule a walk through today

PROPERTY HIGHLIGHTS

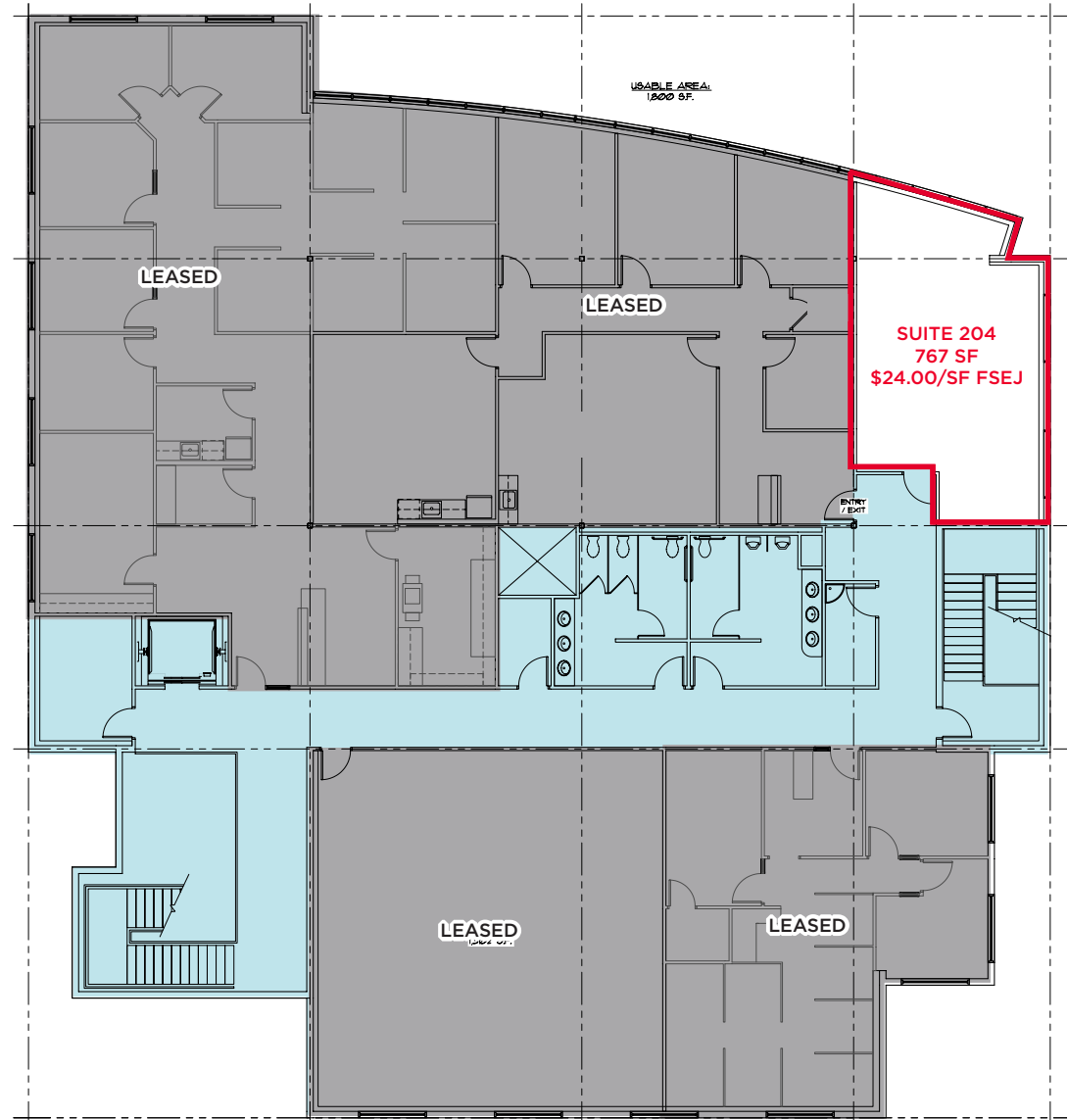
Suite 204	767 SF
Lease Rate	\$24.00/SF FSEJ
T.I. Allowance	Negotiable - Contact Agents
Building/Lot Size	21,350 SF on 1.253 Acres
Parking	Ample On-Site
Availability	Immediately
LockBox	No, Contact Agents

SHORELINE OFFICE SPACE

1649 West Shoreline Drive, Boise, Idaho

767 SF FOR LEASE

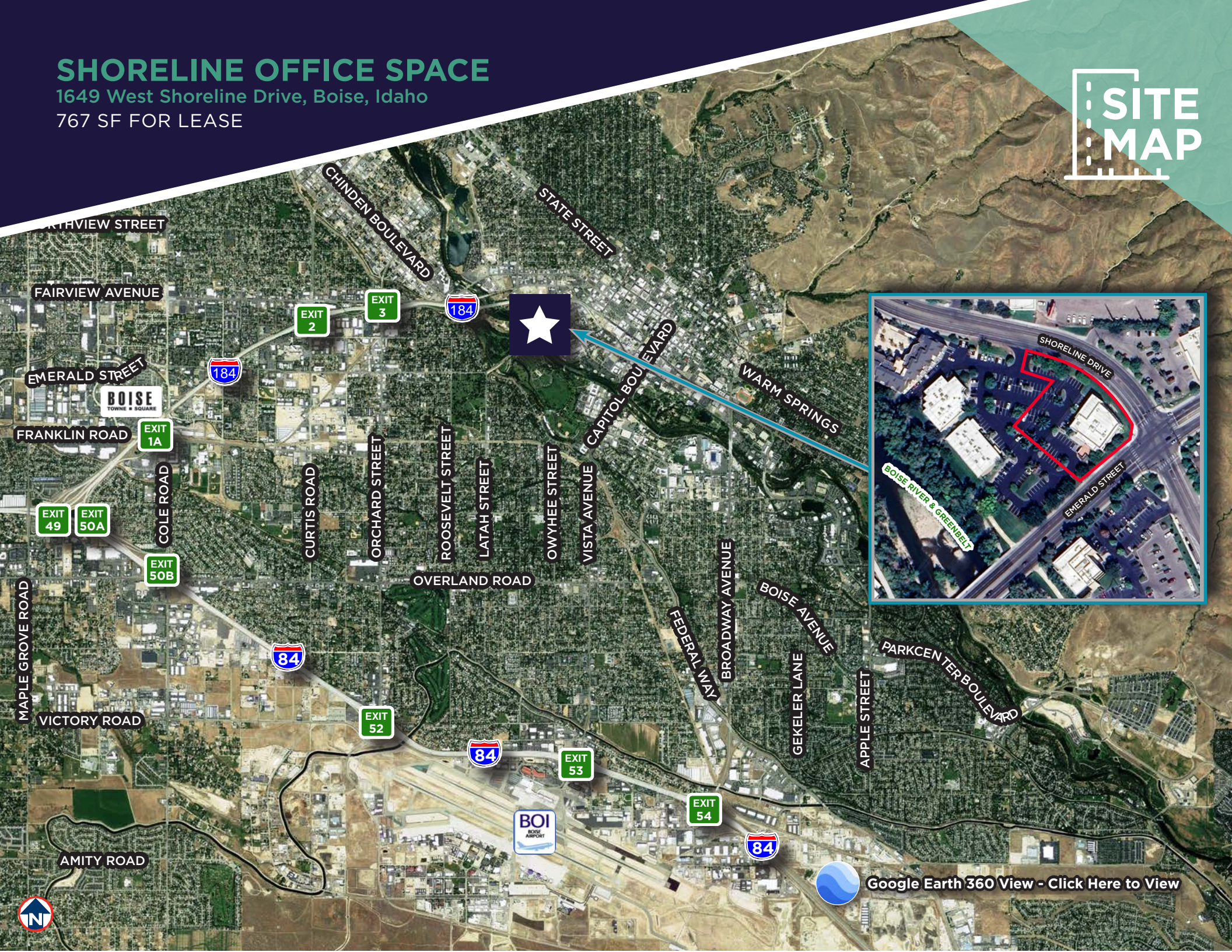
FLOOR PLAN



SHORELINE OFFICE SPACE

1649 West Shoreline Drive, Boise, Idaho

767 SF FOR LEASE



[Google Earth 360 View - Click Here to View](#)

SHORELINE OFFICE SPACE

1649 West Shoreline Drive, Boise, Idaho

767 SF FOR LEASE



WELCOME TO THE WEST'S MOST DYNAMIC METRO, BOISE, IDAHO

A place racking up recognition for its growth, business opportunities and that elusive 'quality of life', yet one that still maintains an approachability and freakishly friendly vibe. A place you can make your mark and leave your mark. What makes us tick and makes us a magnet for growth is shared across this site. Join us on the journey.

WHY BOISE METRO

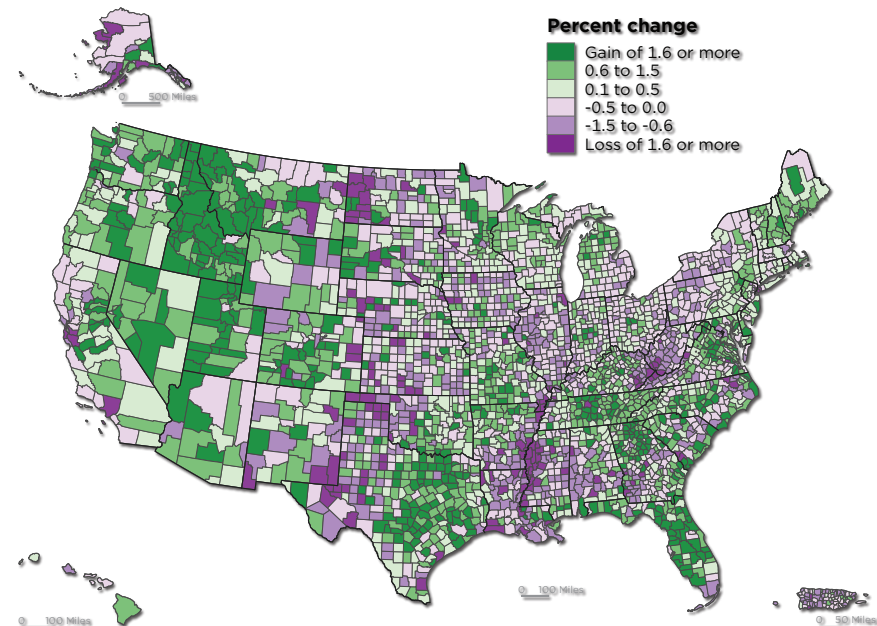
Backed by mountains, blessed with over 200 days of sunny weather, the Boise Metro is earning national acclaim like no other mid-sized city in America. Our incredible quality of life has attracted a thriving mix of high tech, agribusiness and manufacturing businesses along with a young, educated workforce to support them.

Click here to download the complete Boise Valley Regional Overview:

<https://bvcp.org/regional-overview/>

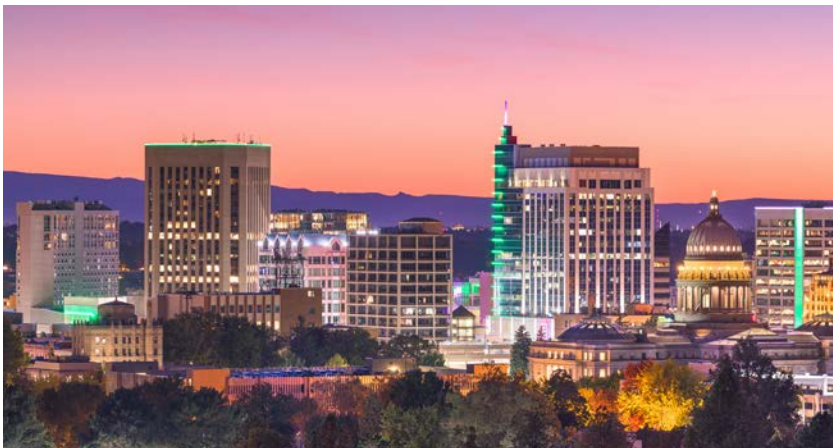
WHERE COUNTIES ARE GROWING

PERCENT CHANGE IN POPULATION BY COUNTY: 2020 TO 2021



United States™
Census
Bureau

U.S. Department of Commerce
Economics and Statistics Administration
U.S. CENSUS BUREAU
census.gov



SOURCE: U.S. CENSUS BUREAU, VINTAGE 2021 POPULATION ESTIMATES



FOR MORE INFORMATION, CONTACT:

JENNIFER MCENTEE

Senior Director
Office | Capital Markets
+1 208 287 9495
jennifer.mcentee@cushwake.com

BREE WELLS

Director
Office | Capital Markets
+1 208 287 9492
bree.wells@cushwake.com

BRAYDON TORRES

Associate
Office | Capital Markets
+1 208 207 9485
braydon.torres@cushwake.com

999 West Main Street, Ste 1300
Boise, Idaho 83702
Main +1 208 287 9500
Fax +1 208 287 9501
cushmanwakefield.com

©2024 Cushman & Wakefield. All rights reserved. The information contained in this communication is strictly confidential. This information has been obtained from sources believed to be reliable but has not been verified. NO WARRANTY OR REPRESENTATION, EXPRESS OR IMPLIED, IS MADE AS TO THE CONDITION OF THE PROPERTY (OR PROPERTIES) REFERENCED HEREIN OR AS TO THE ACCURACY OR COMPLETENESS OF THE INFORMATION CONTAINED HEREIN, AND SAME IS SUBMITTED SUBJECT TO ERRORS, OMISSIONS, CHANGE OF PRICE, RENTAL OR OTHER CONDITIONS, WITHDRAWAL WITHOUT NOTICE, AND TO ANY SPECIAL LISTING CONDITIONS IMPOSED BY THE PROPERTY OWNER(S). ANY PROJECTIONS, OPINIONS OR ESTIMATES ARE SUBJECT TO UNCERTAINTY AND DO NOT SIGNIFY CURRENT OR FUTURE PROPERTY PERFORMANCE.

