



**CUSHMAN &  
WAKEFIELD**

Southwestern Ontario

**FOR LEASE**

**620 RICHMOND STREET**

*London, ON*



**PRIME RETAIL/OFFICE/SPA SPACE AVAILABLE**

**ASKING RENT**

**\$25.00 PSF NET**

**ADDITIONAL RENT**

**\$14.82 PSF (EST.)**

**ZONING**

**BDC(1)**

**TYLER DESJARDINE**

*Sales Representative*

519 438 5403

[tyler.desjardine@cushwakeswo.com](mailto:tyler.desjardine@cushwakeswo.com)

**CUSHMAN & WAKEFIELD  
SOUTHWESTERN ONTARIO**  
850 Medway Park Dr, Suite 201  
London, Ontario N6G 5G6  
[www.cushwakeswo.com](http://www.cushwakeswo.com)

©2025 Cushman & Wakefield Southwestern Ontario, Real Estate Brokerage, Independently Owned and Operated. A Member of the Cushman & Wakefield Alliance.  
This information has been obtained from sources believed to be reliable but has not been verified. No warranty or representation, express or implied, is made as to the condition of the property (or properties) referenced herein or as to the accuracy or completeness of the information contained herein, and same is submitted subject to errors, omissions, change of price, rental or other conditions, withdrawal without notice, and to any special listing conditions imposed by the property owner(s). Any projections, opinions or estimates are subject to uncertainty and do not signify current or future property performance. All rights reserved.

# ABOUT THE PROPERTY

Prime downtown corner building available for lease on Richmond Row.

- **Additional rent inclusive of utilities**
- **Zoning:** BDC(1): permits a wide range of uses, such as, retail, offices, restaurants, medical/dental/clinics, financial, bake shops, service and repair, convenience stores, food store, studios, commercial recreation, personal service establishments etc.
- Excellent daily traffic count
- Building has direct exposure on to Richmond Row
- Across from Victoria Park, Starbucks, Joe Kools, Libro and located beside the Running Room, Kung Fu Tea, Hangar 9 and Atash Restaurant

UNIT	AVAILABLE SPACE	ASKING RENT	ADDITIONAL RENT
G	929 SF	\$25.00 PSF Net	\$14.82 PSF + HST (Est.)*
H	2,326 SF	\$25.00 PSF Net	\$14.82 PSF + HST (Est.)*
G-H	3,255 SF	\$25.00 PSF Net	\$14.82 PSF + HST (Est.)*



Per the 2003 BOMA - 3162 + 280 (STORAGE) = 3462 sqft

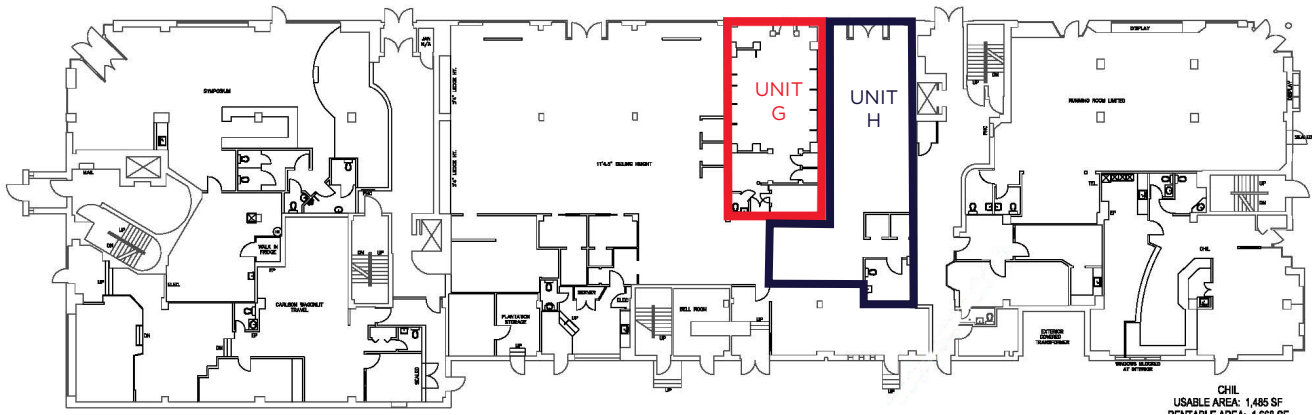
USABLE AREA: 2,816 SF  
RENTABLE AREA: 3,162 SF

HANGAR 9  
USABLE AREA: 5,866 SF  
RENTABLE AREA: 6,589 SF

ANDREW DOUGLAS  
USABLE AREA: 827 SF  
RENTABLE AREA: 920 SF

Per the 2003 BOMA - 2605 sqft

RUNNING ROOM  
USABLE AREA: 2,320 SF  
RENTABLE AREA: 2,606 SF



**TYLER DESJARDINE**

Sales Representative

519 438 5403

tyler.desjardine@cushwakeswo.com

**CUSHMAN & WAKEFIELD**  
SOUTHWESTERN ONTARIO  
850 Medway Park Dr, Suite 201  
London, Ontario N6G 5G6  
[www.cushwakeswo.com](http://www.cushwakeswo.com)

**CUSHMAN & WAKEFIELD**  
Southwestern Ontario

©2025 Cushman & Wakefield Southwestern Ontario, Real Estate Brokerage, Independently Owned and Operated. A Member of the Cushman & Wakefield Alliance. This information has been obtained from sources believed to be reliable but has not been verified. No warranty or representation, express or implied, is made as to the condition of the property (or properties) referenced herein or as to the accuracy or completeness of the information contained herein, and same is submitted subject to errors, omissions, change of price, rental or other conditions, withdrawal without notice, and to any special listing conditions imposed by the property owner(s). Any projections, opinions or estimates are subject to uncertainty and do not signify current or future property performance. All rights reserved.