

FOR LEASE

1901 S Poinciana Blvd., Kissimmee, FL 34758

Multi-Tenant Industrial Facility



AVAILABLE SUITE

25,000 SF

OUTSIDE STORAGE

1.85 AC

TRUCK COURT

Fully fenced

JARED BONSHIRE
Executive Managing Director
(407) 541 4414
jared.bonshire@cushwake.com

DAVID PEREZ
Executive Managing Director
(407) 541 4435
david.perez@cushwake.com

TAYLOR ZAMBITO
Senior Director
(407) 541 4409
Taylor.zambito@cushwake.com

RYAN HUBBARD
Director
(407) 541 4390
Ryan.hubbard@cushwake.com

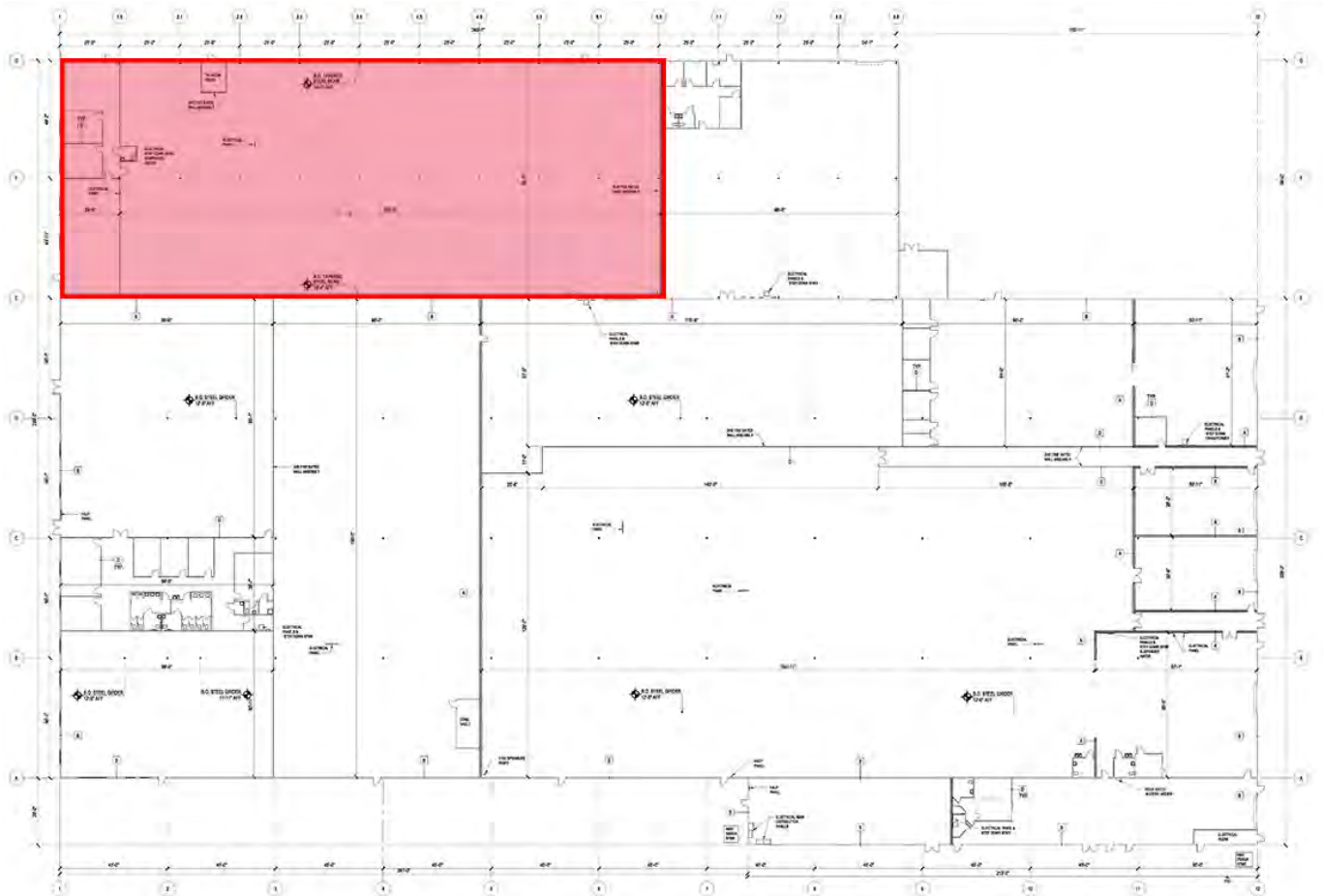
20 N. Orange Avenue
Suite 300
Orlando, FL 32801
cushmanwakefield.com

SUITE 116-117

Floor Plan



Includes 1.85-Acre Outdoor Storage/Trailer Parking Site



Asking Rate
\$13.00 PSF NNN

Est'd. OPEX
\$2.50 PSF

Available
Immediately

Warehouse SF
22,476 SF

Office SF
2,524 SF

Built
1976

Clear Height
15'

Dock Loading
1X

Grade Loading
2X

SUITE 116-117

Outdoor Storage Site



OUTDOOR SPACE

1.85 AC

DOOR ACCESS

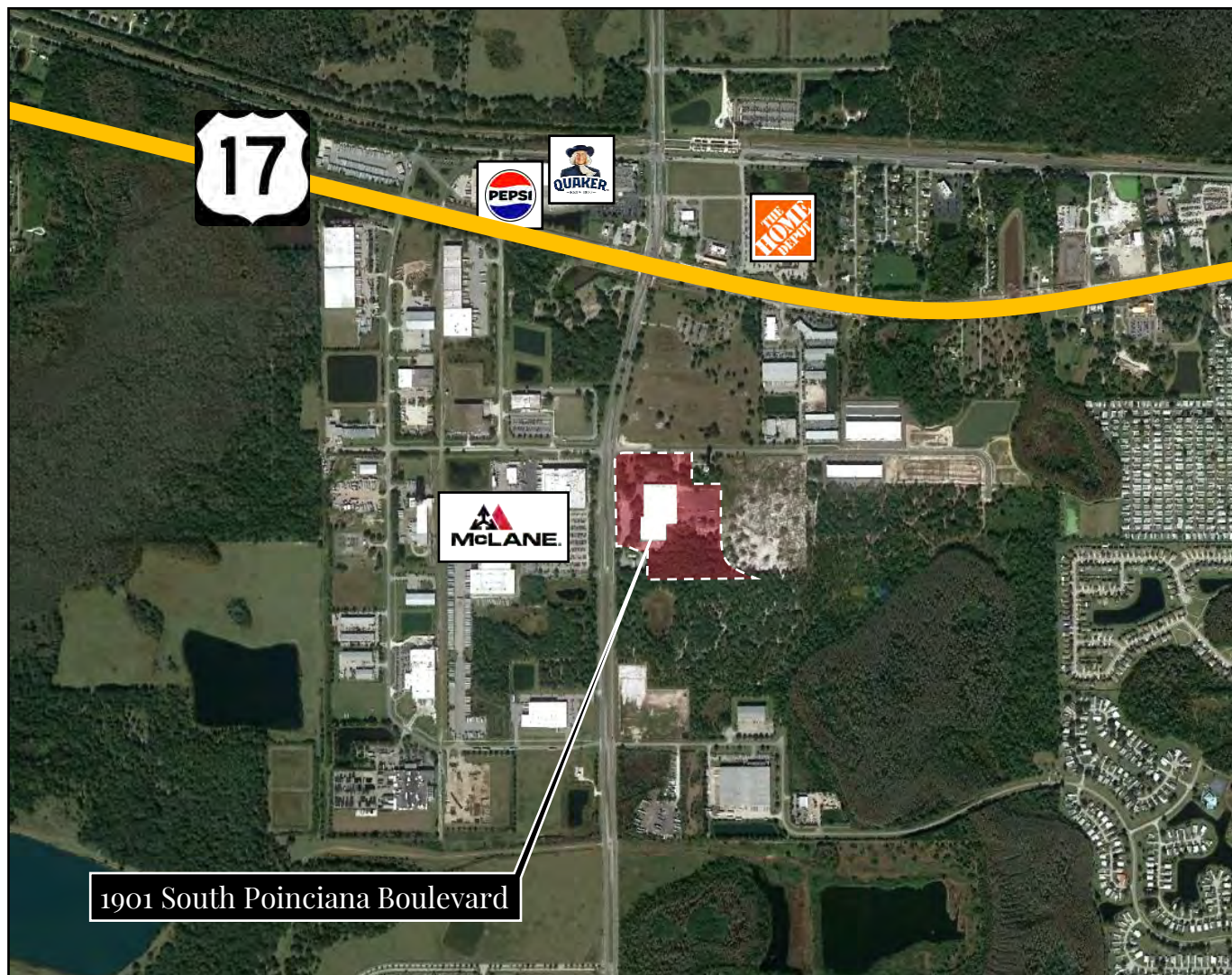
1x Dock-High
2x-Drive-In

SECURED SITE

Fully Fenced and
Lit

LOCATION

Aerial

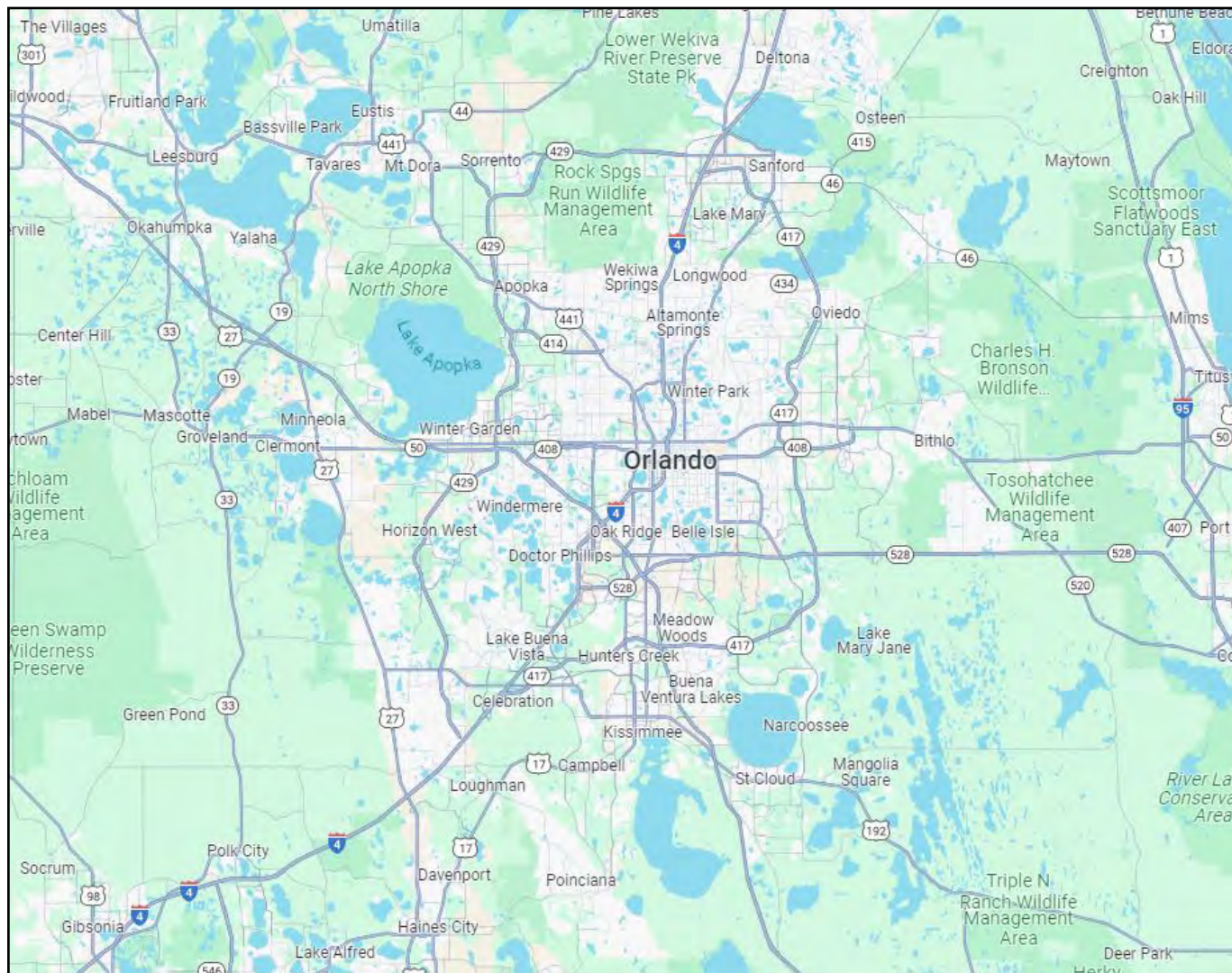


Osceola County - Submarket Overview

Submarket inventory	9,616,899 SF
Last 12 months' net absorption	695,136 SF
Vacancy Rate	2.78%
Average Industrial Asking Rate	\$12.67 PSF NNN

LOCATION

Map View



Local Connectivity

Route 17	0.4 mi
I-4	8.9 mi
Orlando International Airport	22.4 mi
Orlando CBD	25.2 mi

CONTACT US



JARED BONSHIRE

Executive Managing Director

(407) 541 4414

jared.bonshire@cushwake.com

DAVID PEREZ

Executive Managing Director

(407) 541 4435

david.perez@cushwake.com

TAYLOR ZAMBITO

Senior Director

(407) 541 4409

Taylor.zambito@cushwake.com

RYAN HUBBARD

Director

(407) 541 4390

Ryan.hubbard@cushwake.com

20 N. Orange Avenue
Suite 300
Orlando, FL 32801

cushmanwakefield.com

©2023 Cushman & Wakefield. All rights reserved. The information contained in this communication is strictly confidential. This information has been obtained from sources believed to be reliable but has not been verified. NO WARRANTY OR REPRESENTATION, EXPRESS OR IMPLIED, IS MADE AS TO THE CONDITION OF THE PROPERTY (OR PROPERTIES) REFERENCED HEREIN OR AS TO THE ACCURACY OR COMPLETENESS OF THE INFORMATION CONTAINED HEREIN, AND SAME IS SUBMITTED SUBJECT TO ERRORS, OMISSIONS, CHANGE OF PRICE, RENTAL OR OTHER CONDITIONS, WITHDRAWAL WITHOUT NOTICE, AND TO ANY SPECIAL LISTING CONDITIONS IMPOSED BY THE PROPERTY OWNER(S). ANY PROJECTIONS, OPINIONS OR ESTIMATES ARE SUBJECT TO UNCERTAINTY AND DO NOT SIGNIFY CURRENT OR FUTURE PROPERTY PERFORMANCE.