

FOR SALE

FILM ALBERTA BUILDING

5305 Allard Way, Edmonton, AB

19,614 SF Office Space (Including Lower Level)
31,309 SF Studio/Warehouse,
Plus Second Warehouse & Mezzanine

Cushman & Wakefield Edmonton

Suite 2700, TD Tower
10088 102 Avenue
Edmonton, AB T5J 2Z1
cwedm.com

Jeff McCammon, CCIM

Senior Associate
780 445 0026
jeff.mccammon@cwedm.com

Doug Bauer

Senior Associate
780 991 6456
doug.bauer@cwedm.com

Dustin Bateyko

Associate Partner
780 702 4257
dustin.bateyko@cwedm.com

PROPERTY DETAILS

MUNICIPAL ADDRESS

5305 Allard Way, Edmonton, AB

LEGAL DESCRIPTION

Plan 0020704, Block 95, Lot 6

ZONING

CG - General Commercial Zone

NEIGHBOURHOOD

Pleasantview

BUILDING SIZE

Office Space

± 4,864 SF (Basement)

± 4,943 SF (Main Floor)

± 4,943 SF (Second Floor)

± 4,864 SF (Third Floor)

Studio and Loading

± 15,504 SF (Studio)

± 8,512 SF (Loading)

± 7,293 SF (Mezzanine)

± 50,923 SF (Total)

PARKING

± 111 Stalls

LOT AREA

± 1.54 Acres

CEILING HEIGHT (STUDIO)

36'

PROPERTY TAX

\$133,473.99
(2025)

SALE PRICE

\$5,500,000

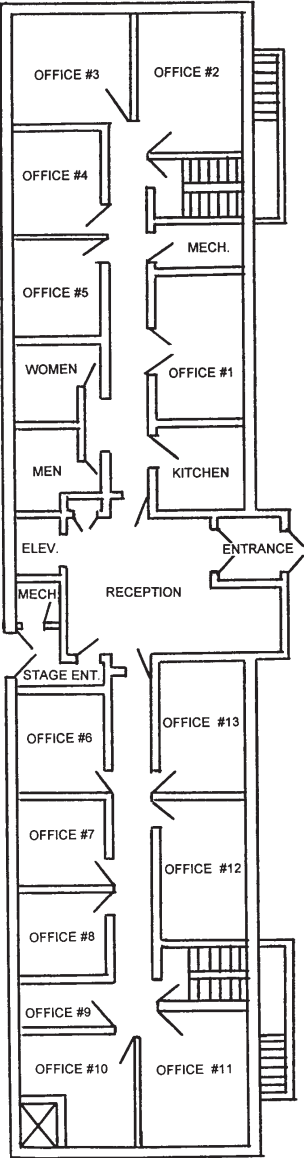


PROPERTY FEATURES

- Land: ± 67,154 SF
- Zoning:
CG - General Commercial Zone
- Close to public transportation
- Recent upgrades to lobby
- Large electrical service
- Extensive built out office area
- Ample parking

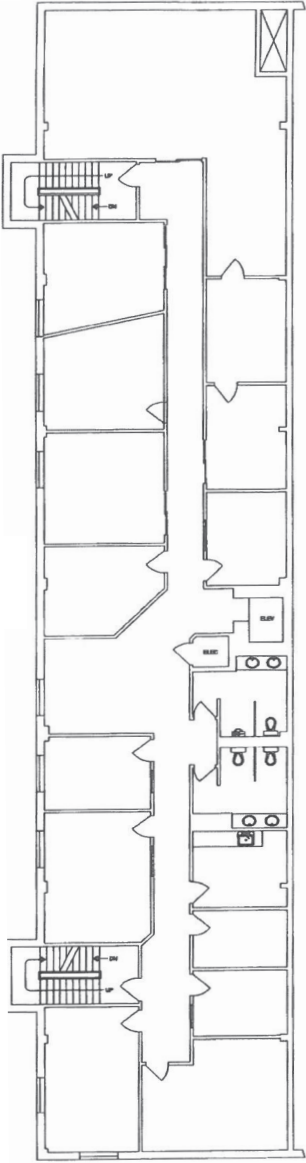
FLOOR PLANS

Main Floor



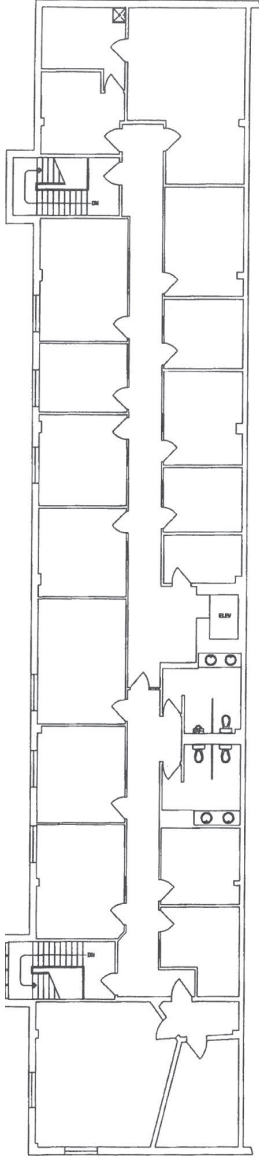
4,943 SF

2nd Floor



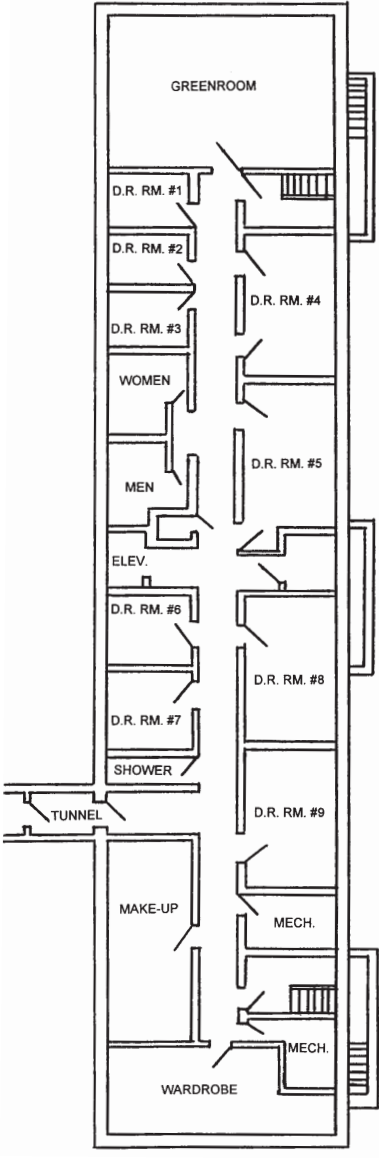
4,943 SF

3rd Floor



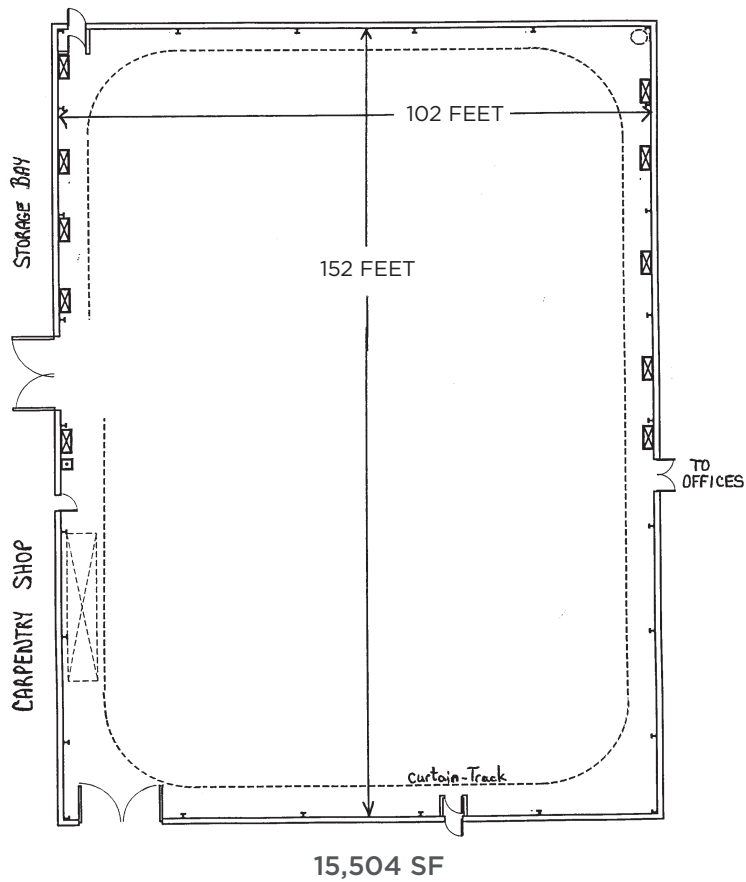
4,864 SF

Lower Level



4,864 SF

STAGE FLOOR PLAN



Jeff McCammon, CCIM
Senior Associate
780 445 0026
jeff.mccammon@cwedm.com

Doug Bauer
Senior Associate
780 991 6456
doug.bauer@cwedm.com

Dustin Bateyko
Associate Partner
780 702 4257
dustin.bateyko@cwedm.com