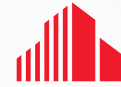


FOR LEASE

4170 South 671 West  
Salt Lake City, UT



CUSHMAN &  
WAKEFIELD



## SECURED YARD FOR LEASE

### PROPERTY HIGHLIGHTS

### GREAT MID-VALLEY LOCATION

- Call for Pricing
- 3.3 Acres
- Fenced
- Roadbase
- Build-to-Suit
- Modular Office/Break Area Now Approved

### Contact

**Jon Schreck**

Director

+1 801 303 5531

[jon.schreck@cushwake.com](mailto:jon.schreck@cushwake.com)

**Phillip Eilers**

Senior Director

+1 801 303 5426

[phillip.eilers@cushwake.com](mailto:phillip.eilers@cushwake.com)

**Rick Newton**

Director

+1 801 303 5485

[rick.netwon@cushwake.com](mailto:rick.netwon@cushwake.com)

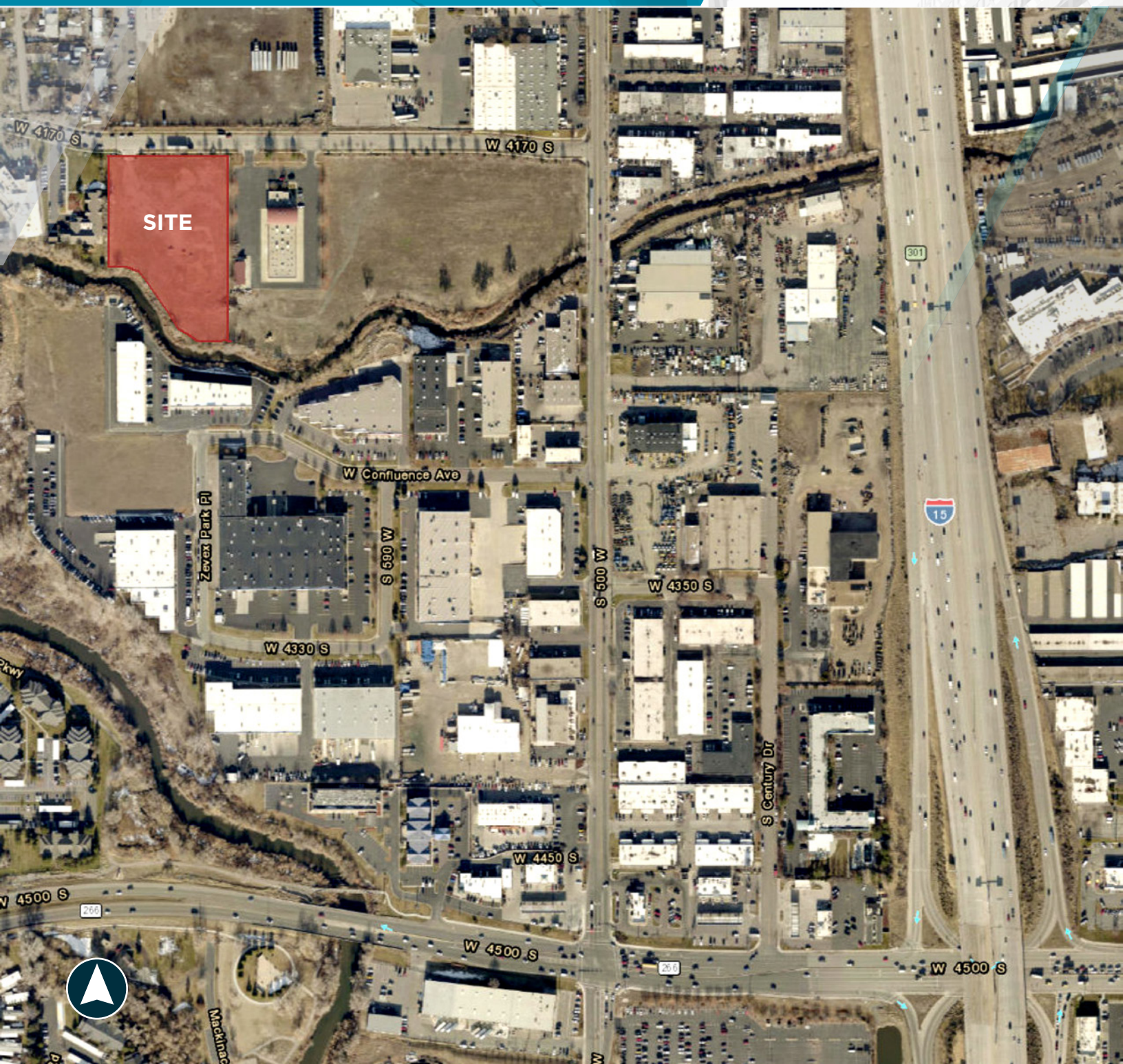


FOR LEASE

4170 South 671 West  
Salt Lake City, UT



CUSHMAN &  
WAKEFIELD



## Contact

**Jon Schreck**

Director

+1 801 303 5531

[jon.schreck@cushwake.com](mailto:jon.schreck@cushwake.com)

**Phillip Eilers**

Senior Director

+1 801 303 5426

[phillip.eilers@cushwake.com](mailto:phillip.eilers@cushwake.com)

**Rick Newton**

Director

+1 801 303 5485

[rick.netwon@cushwake.com](mailto:rick.netwon@cushwake.com)

170 South Main Street

Suite 1600

Salt Lake City, UT 84101

Main +1 801 322 2000

[cushmanwakefield.com](http://cushmanwakefield.com)

Cushman & Wakefield Copyright 2022. No warranty or representation, express or implied, is made to the accuracy or completeness of the information contained herein, and same is submitted subject to errors, omissions, change of price, rental or other conditions, withdrawal without notice, and to any special listing conditions imposed by the property owner(s). As applicable, we make no representation as to the condition of the property (or properties) in question. (path: G:\UT\SL1\Shared\Apps\Gigas\1 - Projects\Schreck\_Jon\1 - Flyers\4170South671West)