

**Two Lots Totaling  
(+/-) 7.53 acres For Sale**

# High Exposure Development Land in Southwest Winnipeg

**Brett Intrater**

**Executive Vice President**

Brett Intrater Personal Real Estate Corporation

T 204 934 6229

C 204 999 1238

brett.intrater@cwstevenson.ca

**Ryan Munt**

**Executive Vice President**

Ryan Munt Personal Real Estate Corporation

T 204 928 5015

C 204 298 1905

ryan.munt@cwstevenson.ca

**Chris Macsymic**

**Executive Vice President & Principal**

Chris Macsymic Personal Real Estate Corporation

T 204 928 5019

C 204 997 6547

chris.macsymic@cwstevenson.ca







LAND FOR SALE

## High Exposure Development Land in Southwest Winnipeg

LOT 1 BLOCK 3 PLAN 67410:

3.69 Acres

LOT 2 BLOCK 3 PLAN 67410:

3.84 Acres

LIST PRICE

\$825,000 Per Acre

*Some development restrictions apply, please contact for more information.*



### Highly Desirable

C3 zoned southwest land



### Growing Area

being surrounded by new homes and multi-family buildings



### Excellent Visibility

from Kenaston Boulevard and access from Payworks Way



### Brand New Development

Ideal for office, flex industrial/office, car dealerships, self-storage and high-end commercial condos



# LAND FOR SALE

## High Exposure Development Land in Southwest Winnipeg

### LAND USE MAP



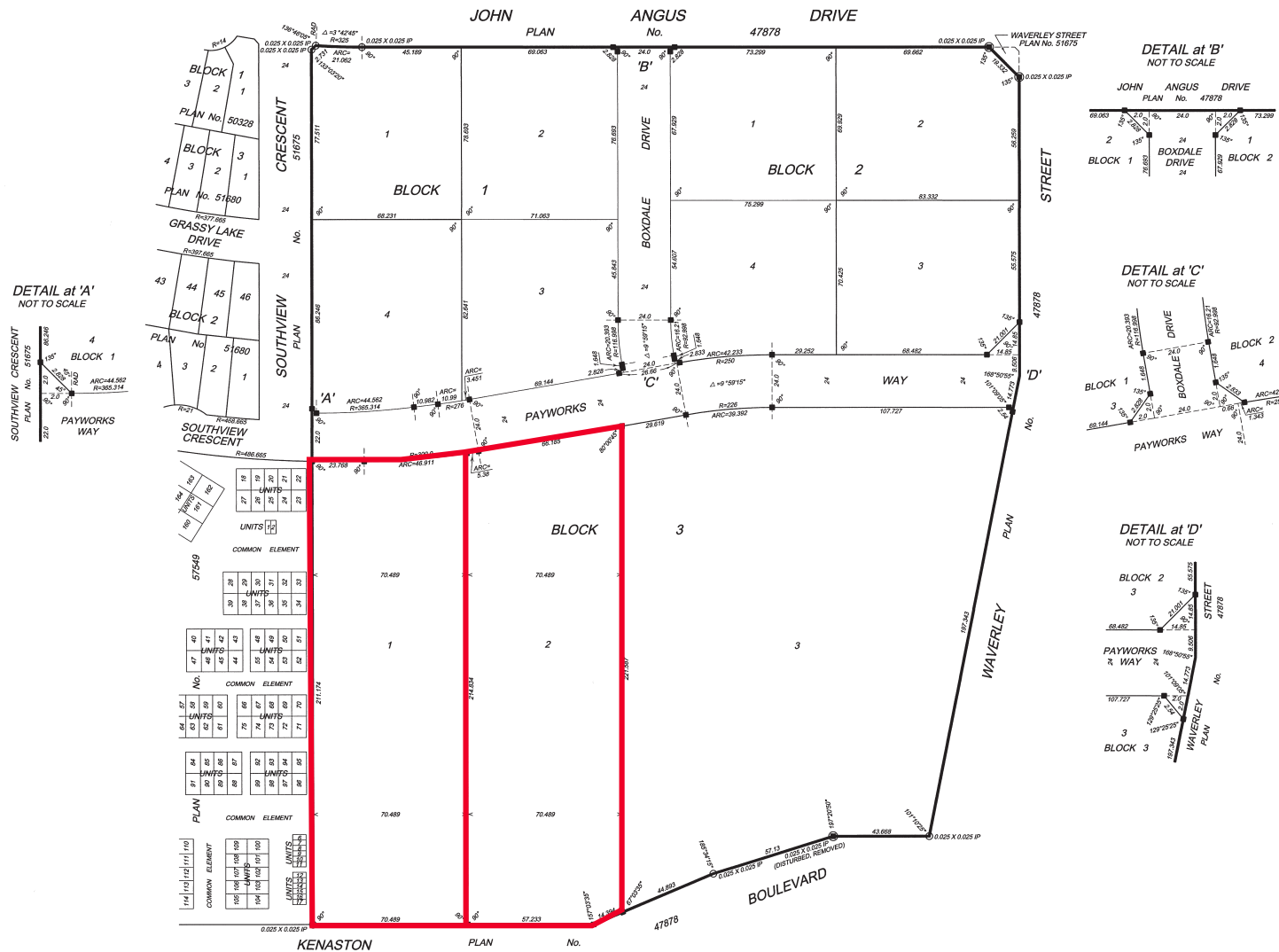


# LAND FOR SALE

## High Exposure Development

### Land in Southwest Winnipeg

#### LAND SURVEY

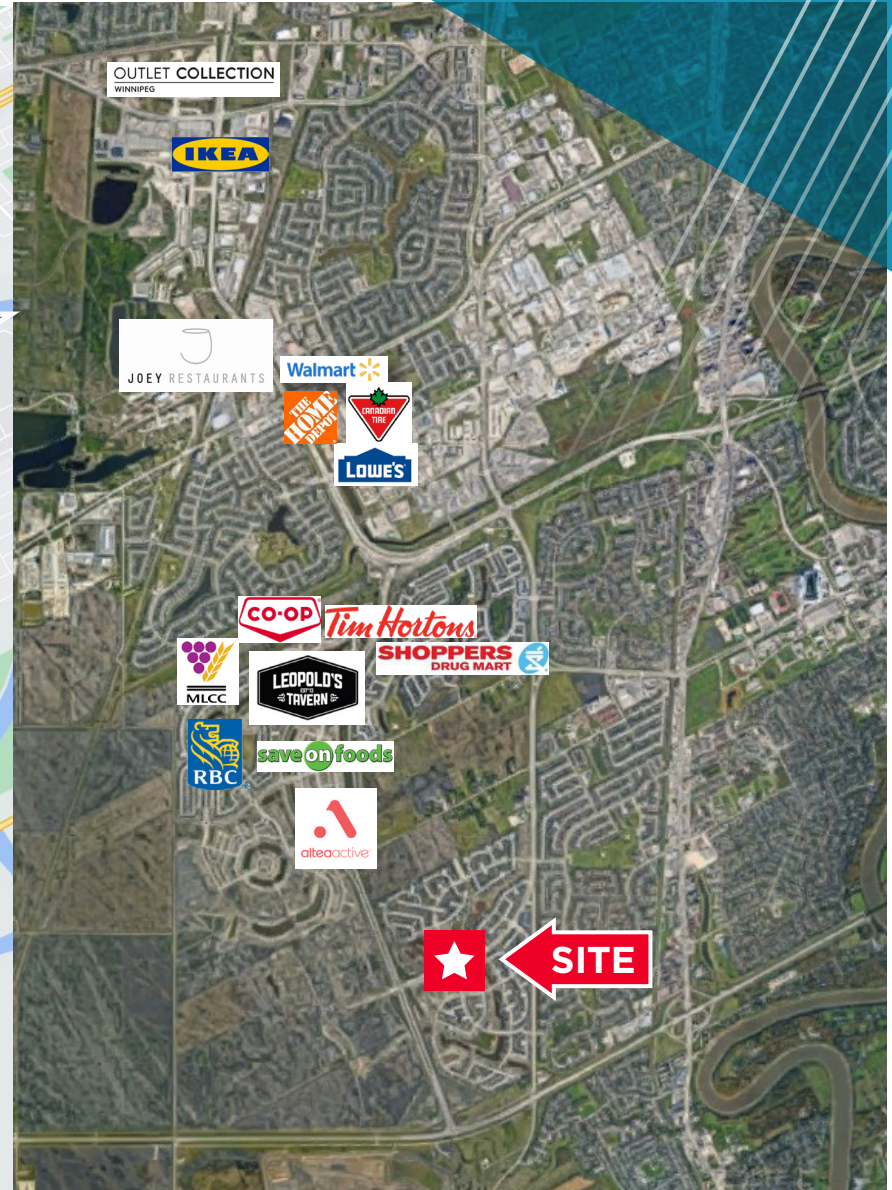
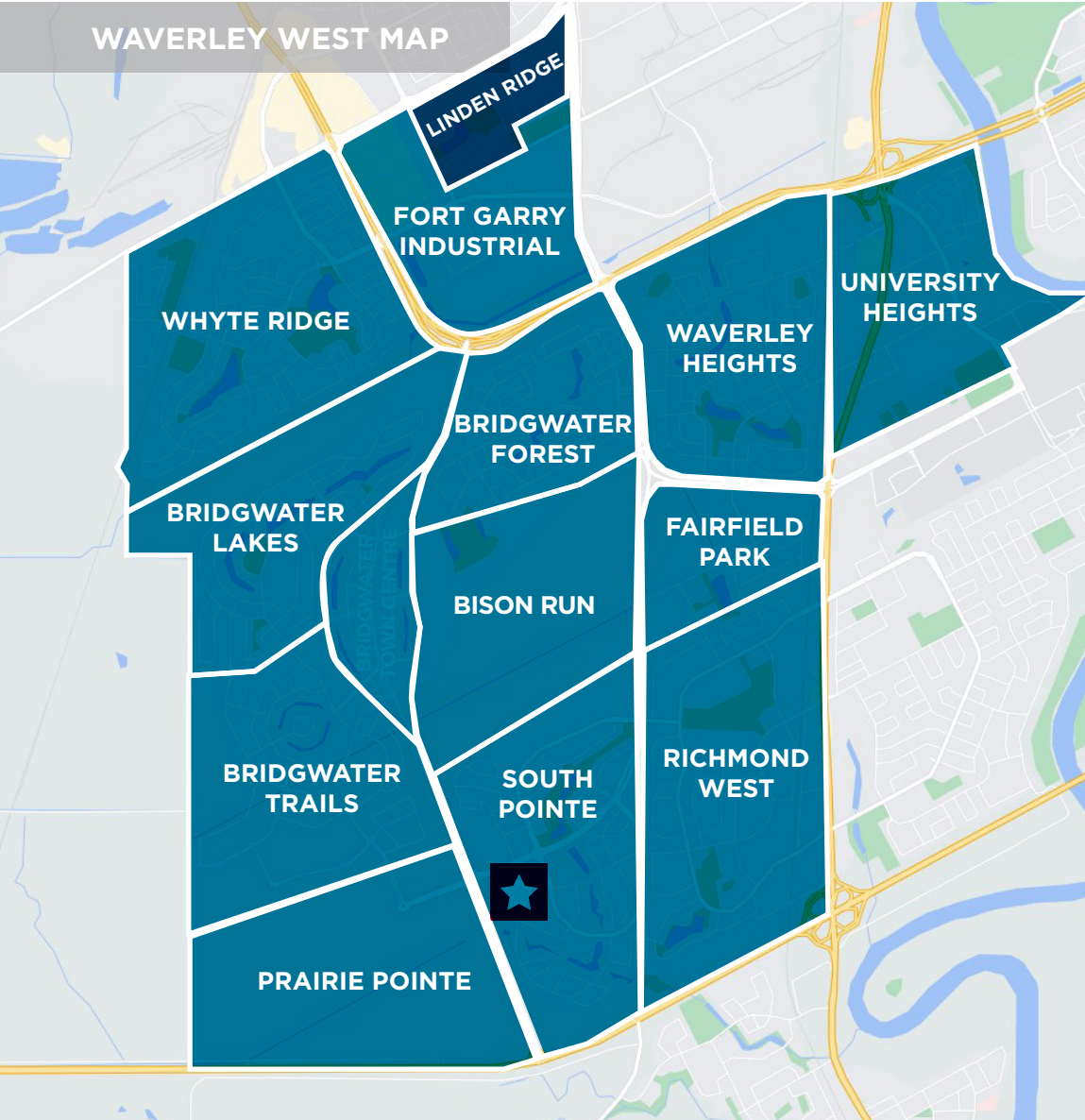




# LAND FOR SALE

## High Exposure Development Land in Southwest Winnipeg

WAVERLEY WEST MAP



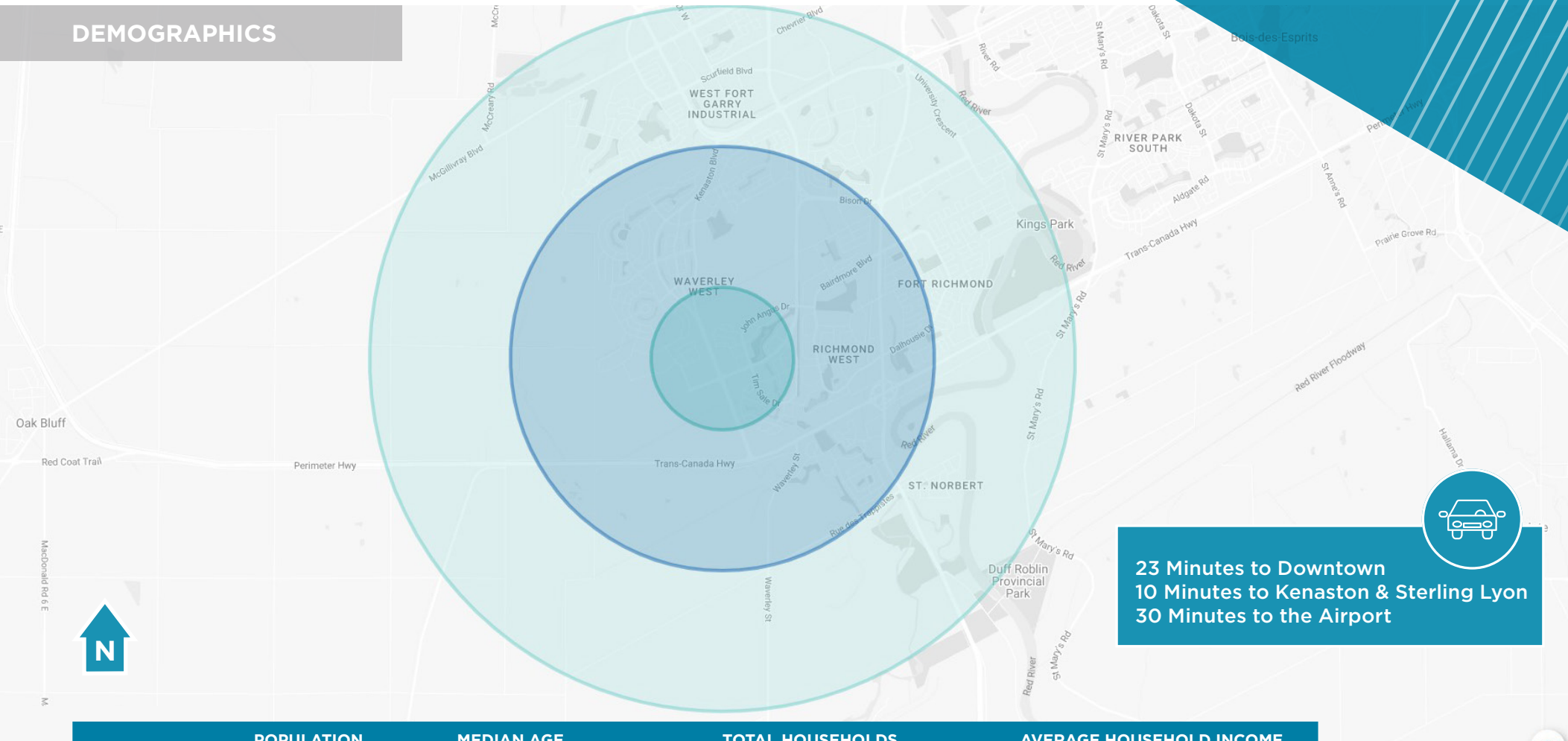


# LAND FOR SALE

## High Exposure Development Land in Southwest Winnipeg



## DEMOGRAPHICS



	POPULATION	MEDIAN AGE	TOTAL HOUSEHOLDS	AVERAGE HOUSEHOLD INCOME
1KM	5,560	30.55	1,069	\$146,545.00
3KM	45,232	34.02	7,850	\$102,420.82
5KM	76,987	36.37	18,524	\$106,189.58

Independently Owned and Operated / A Member of the Cushman & Wakefield Alliance ©2022 Cushman & Wakefield. All rights reserved. The information contained in this communication is strictly confidential. This information has been obtained from sources believed to be reliable but has not been verified. NO WARRANTY OR REPRESENTATION, EXPRESS OR IMPLIED, IS MADE AS TO THE CONDITION OF THE PROPERTY (OR PROPERTIES) REFERENCED HEREIN OR AS TO THE ACCURACY OR COMPLETENESS OF THE INFORMATION CONTAINED HEREIN, AND SAME IS SUBMITTED SUBJECT TO ERRORS, OMISSIONS, CHANGE OF PRICE, RENTAL OR OTHER CONDITIONS, WITHDRAWAL WITHOUT NOTICE, AND TO ANY SPECIAL LISTING CONDITIONS IMPOSED BY THE PROPERTY OWNER(S). ANY PROJECTIONS, OPINIONS OR ESTIMATES ARE SUBJECT TO UNCERTAINTY AND DO NOT SIGNIFY CURRENT OR FUTURE PROPERTY PERFORMANCE.



Independently Owned and Operated / A Member of the Cushman & Wakefield Alliance ©2022 Cushman & Wakefield. All rights reserved. The information contained in this communication is strictly confidential. This information has been obtained from sources believed to be reliable but has not been verified. NO WARRANTY OR REPRESENTATION, EXPRESS OR IMPLIED, IS MADE AS TO THE CONDITION OF THE PROPERTY (OR PROPERTIES) REFERENCED HEREIN OR AS TO THE ACCURACY OR COMPLETENESS OF THE INFORMATION CONTAINED HEREIN, AND SAME IS SUBMITTED SUBJECT TO ERRORS, OMISSIONS, CHANGE OF PRICE, RENTAL OR OTHER CONDITIONS, WITHDRAWAL WITHOUT NOTICE, AND TO ANY SPECIAL LISTING CONDITIONS IMPOSED BY THE PROPERTY OWNER(S). ANY PROJECTIONS, OPINIONS OR ESTIMATES ARE SUBJECT TO UNCERTAINTY AND DO NOT SIGNIFY CURRENT OR FUTURE PROPERTY PERFORMANCE.

**Brett Intrater**  
**Executive Vice President**

Brett Intrater Personal Real Estate Corporation  
T 204 934 6229  
C 204 999 1238  
brett.intrater@cwstevenson.ca

**Ryan Munt**  
**Executive Vice President**

Ryan Munt Personal Real Estate Corporation  
T 204 928 5015  
C 204 298 1905  
ryan.munt@cwstevenson.ca

**Chris Macsymic**  
**Executive Vice President & Principal**

Chris Macsymic Personal Real Estate Corporation  
T 204 928 5019  
C 204 997 6547  
chris.macsymic@cwstevenson.ca

