



FOR SUBLEASE | PRIME EAST LONDON SPACE

Asking Rent: \$13.00 PSF Net | Additional Rent: \$5.69 PSF | Building Area: 1,000 SF

1700 DUNDAS STREET EAST UNIT 5

London, ON



**CUSHMAN &
WAKEFIELD**

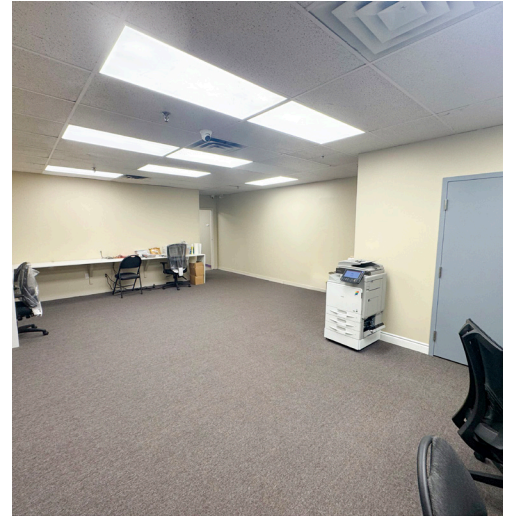
Southwestern Ontario

ABOUT THE PROPERTY

Prime east London space for sublease. Located directly on Dundas Street near Third Street.

UNIT	AVAILABLE SPACE	ASKING RENT	ADDITIONAL RENT (TMI)
5	Approx. 1,000 SF	\$13.00 PSF Net	\$5.69 PSF

- **Zoning:** ASA 1,3,4,5 - permits a wide range of uses: offices, retail, restaurants, day care, supermarket, medical/clinics/dental, recreation etc.
- **Parking:** Available on-site for free
- Well maintained and professionally managed plaza
- Currently used for office space
- Lease runs until January 31ST, 2027
- Utilities separately metered in Tenant's name
- Other Tenants in plaza include: Enchante Hair Studio/Aroma Spa, NDP Political office, The Game chamber, London InterCommunity Health Centre etc.



TYLER DESJARDINE
Sales Representative
519 438 5403
tyler.desjardine@cushwakeswo.com

CUSHMAN & WAKEFIELD
SOUTHWESTERN ONTARIO
850 Medway Park Dr, Suite 201
London, Ontario N6G 5C6
www.cushwakeswo.com

 **CUSHMAN & WAKEFIELD**
Southwestern Ontario

©2025 Cushman & Wakefield Southwestern Ontario, Real Estate Brokerage, Independently Owned and Operated. A Member of the Cushman & Wakefield Alliance. This information has been obtained from sources believed to be reliable but has not been verified. No warranty or representation, express or implied, is made as to the condition of the property (or properties) referenced herein or as to the accuracy or completeness of the information contained herein, and same is submitted subject to errors, omissions, change of price, rental or other conditions, withdrawal without notice, and to any special listing conditions imposed by the property owner(s). Any projections, opinions or estimates are subject to uncertainty and do not signify current or future property performance. All rights reserved.