

16990
GOLDENTOP ROAD

SAN DIEGO, CA 92127

\$1.25 PSF NNN

12 MONTH TENANT
INCENTIVE PLAN

FOR LEASE
FLEX/R&D FACILITY
66,448 SF



**CUSHMAN &
WAKEFIELD**



// BUILDING SPECS

BUILDING SIZE

66,448 SF

AVAILABLE SPACE

66,448 SF

CLEAR HEIGHT

28'

LOADING

15 DOCKS, 1 GRADE LEVEL

PARKING

2.95/1,000 SF

SITE SIZE

5.51 ACRES

POWER

800 AMPS, 277/480V

FIBER

YES

SPRINKLERS

100% WET

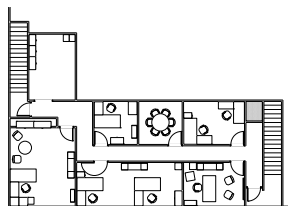
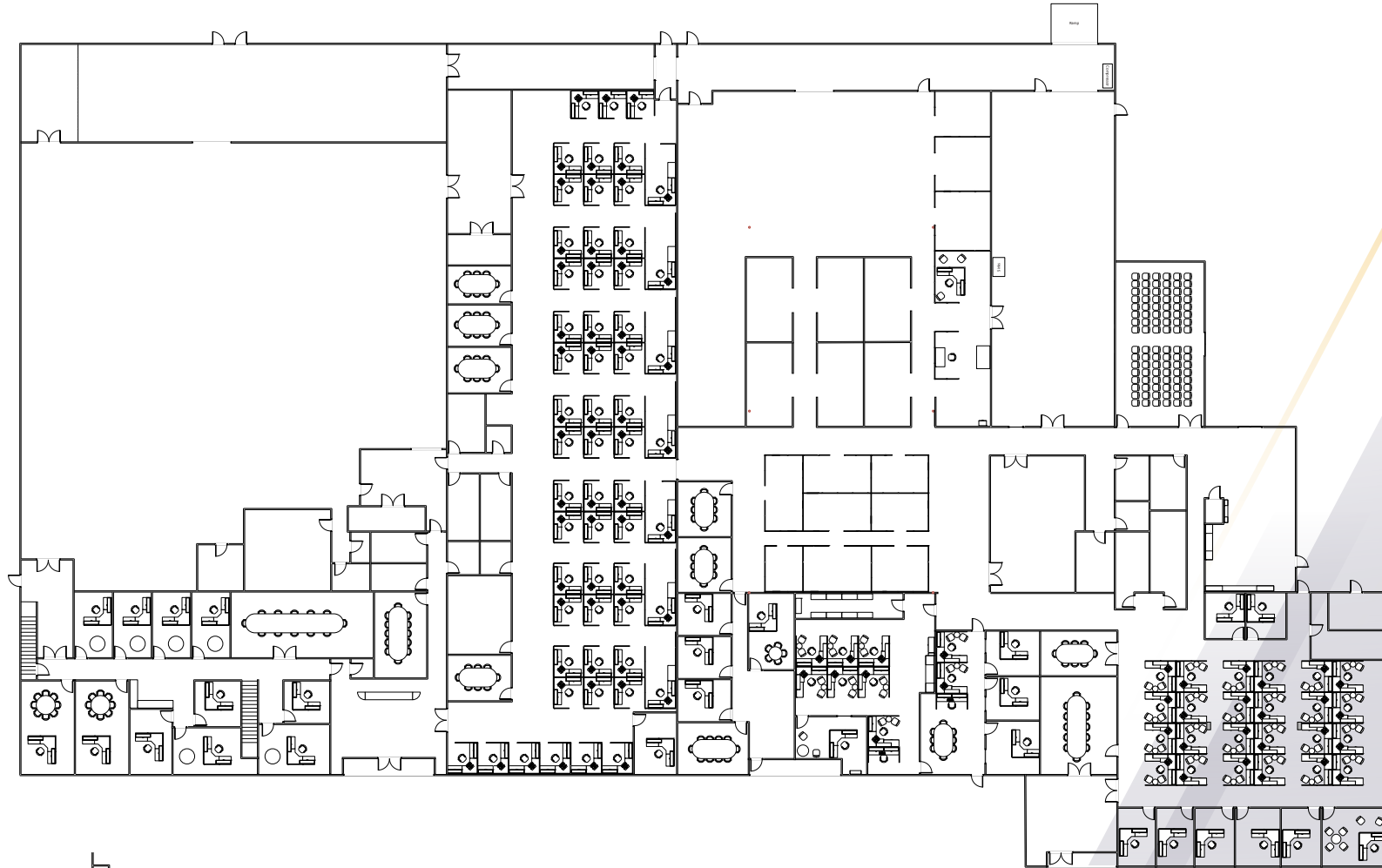
RENTAL RATE

CALL BROKER
(NNNS = \$0.44 PSF)



16990 GOLDENTOP ROAD
San Diego, CA 92127

// FLOOR PLAN



2ND FLOOR

// CORPORATE NEIGHBORS & AMENITIES

4S RANCH COMMONS

RALPHS
CVS PHARMACY
JIMBO'S
ACE HARDWARE
ULTA BEAUTY
KIDS' CARE CLUB
KAHOOTS
CHASE BANK
WELLS FARGO BANK
PANERA BREAD
BANK OF AMERICA
WENDY'S
MENDOCINO FARMS
CHIPOTLE
TASTE OF THAI
SWEETGREEN
THE UPS STORE
EUROPEAN WAX CENTER
BASKIN-ROBBINS
GREAT CLIPS
JOYEE'S DUMPLING HOUSE
STARBUCKS

LA FITNESS

Jerome's
Furniture

4S RANCH VILLAGE

CARL'S JR.
CARMEL PLAZA CLEANERS LLC
CLUB PILATES
DONUT TOUCH BAKERY CAFE
F 45 TRAINING
FLIPPIN' PIZZA
SHELL
SPORT CLIPS, INC
STARBUCKS
SUBWAY
SUSHI ON THE ROCK
T-MOBILE
YOGASIX
YOGURT LOUNGE

CYMER

TERADATA

GENERAL ATOMICS

amazon

PETCO
Where the pets go.

BROADCOM

BAE SYSTEMS

NORTHROP GRUMMAN

NORTHROP GRUMMAN

THE MERCADO

BARONS MARKET
FEDEX OFFICE
GOLDEN SPOON FROZEN
YOGURT
H&R BLOCK
MISSION FED CREDIT UNION
NAVY FEDERAL CREDIT UNION
OLLEH KOREAN BBQ
PIZZA HUT
POKE GO
SUPERWAY CLEANERS

BERNARDO CENTER

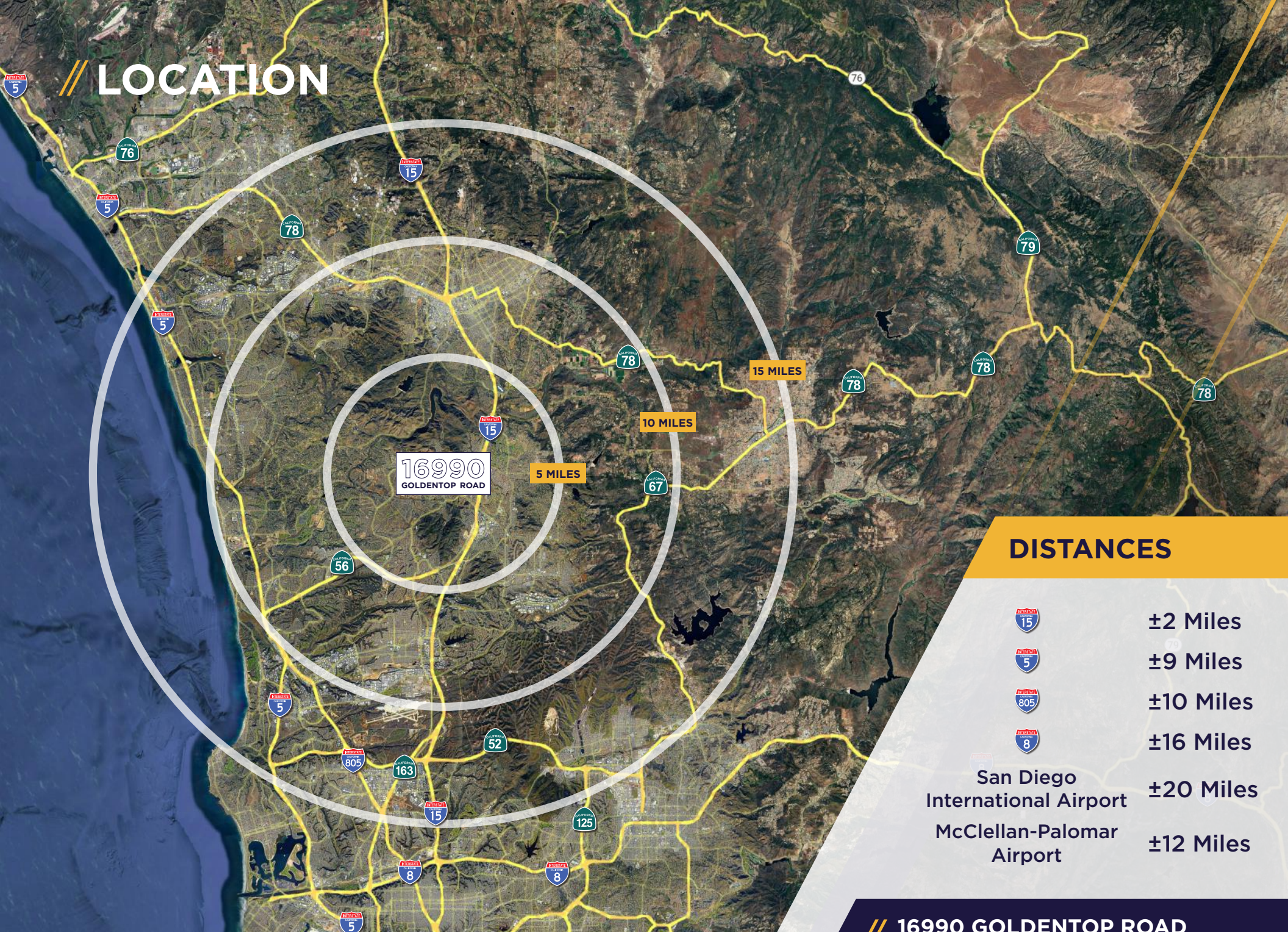
DISCOUNT TIRE
EL PUEBLO
RB COMMUNITY BANK
LITTLE CAESARS

HIGH COUNTRY PLAZA

7-ELEVEN
DOMINO'S PIZZA
JERSEY MIKE'S

// **16990 GOLDENTOP ROAD**
San Diego, CA 92127

// LOCATION



DISTANCES



±2 Miles



±9 Miles



±10 Miles



±16 Miles

San Diego
International Airport
McClellan-Palomar
Airport

±20 Miles

±12 Miles

// **16990 GOLDENTOP ROAD**
San Diego, CA 92127

// PROPERTY PHOTOS



// **16990 GOLDENTOP ROAD**
San Diego, CA 92127

16990

GOLDENTOP ROAD



CONTACT

BRANT ABERG, SIOR
Vice Chair
+1 858 546 5464
brant.aberg@cushwake.com
CA Lic. 01773573



©2025 Cushman & Wakefield. All rights reserved. The information contained in this communication is strictly confidential. This information has been obtained from sources believed to be reliable but has not been verified. NO WARRANTY OR REPRESENTATION, EXPRESS OR IMPLIED, IS MADE AS TO THE CONDITION OF THE PROPERTY (OR PROPERTIES) REFERENCED HEREIN OR AS TO THE ACCURACY OR COMPLETENESS OF THE INFORMATION CONTAINED HEREIN, AND SAME IS SUBMITTED SUBJECT TO ERRORS, OMISSIONS, CHANGE OF PRICE, RENTAL OR OTHER CONDITIONS, WITHDRAWAL WITHOUT NOTICE, AND TO ANY SPECIAL LISTING CONDITIONS IMPOSED BY THE PROPERTY OWNER(S). ANY PROJECTIONS, OPINIONS OR ESTIMATES ARE SUBJECT TO UNCERTAINTY AND DO NOT SIGNIFY CURRENT OR FUTURE PROPERTY PERFORMANCE.