

FOR SUBLEASE

29,338 SF CORNER UNIT



\$9.00 PSF SUBLEASE RATE FOR YEAR 1

BAY 133

10710 - 25 STREET NE

CALGARY, AB



Lead Agents:

BRAD PILLING

brad.pilling@cushwake.com

ZACK DARRAGH

zack.darragh@cushwake.com

PROPERTY DETAILS

District:	Barlow North TradePark
Available Area:	± 29,338 sf
Office Area:	± 5,814 sf
Warehouse Area:	± 23,524 sf
Loading:	4 (9' x 10') dock doors 1 (12' x 14') ramped drive-in door
Ceiling Height:	24' clear
Power:	200A, 600V, 3 phase
Sprinklers:	ESFR
Sublease Rate:	\$9.00 psf for year 1
Op. Costs:	\$4.45 psf (2025 est.)
Available:	Immediately
Sublease Expiry:	July 30, 2029

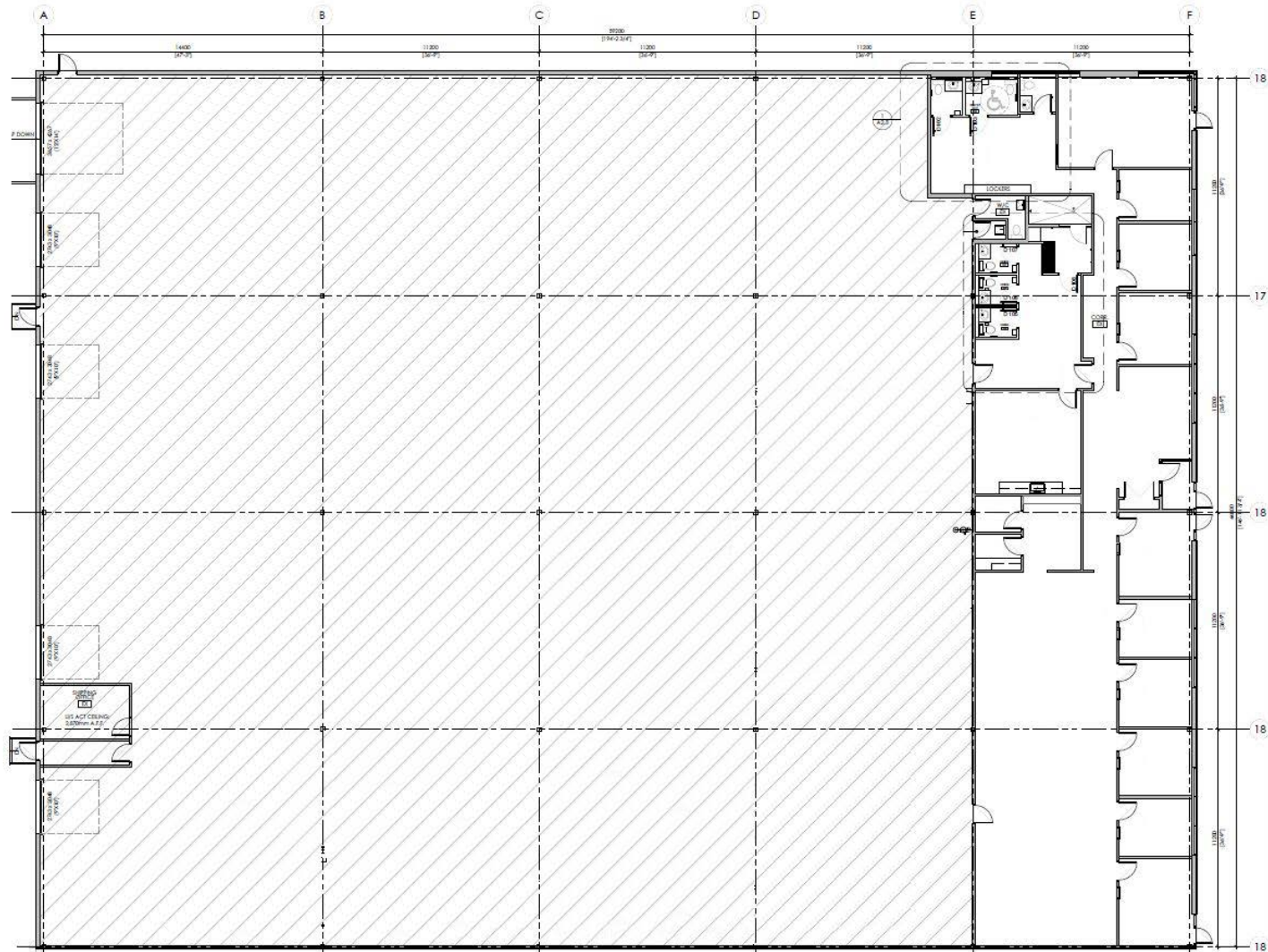
Highlights

- Extremely well-maintained, end-cap unit in a professionally managed industrial complex
- Brand new, recently renovated office improvements
- Corner unit with a combination of dock and drive-in loading
- Abundance of washrooms plus a newly constructed staff shower
- Separate shipping office located at the rear of the warehouse
- New furniture can be negotiated
- Double row parking
- Possibility of adding 3 additional dock doors
- Good access onto Country Hills Boulevard, Deerfoot Trail and Stoney Trail
- Close proximity to the Calgary International Airport
- Recreational uses will not be accepted



FLOOR PLAN

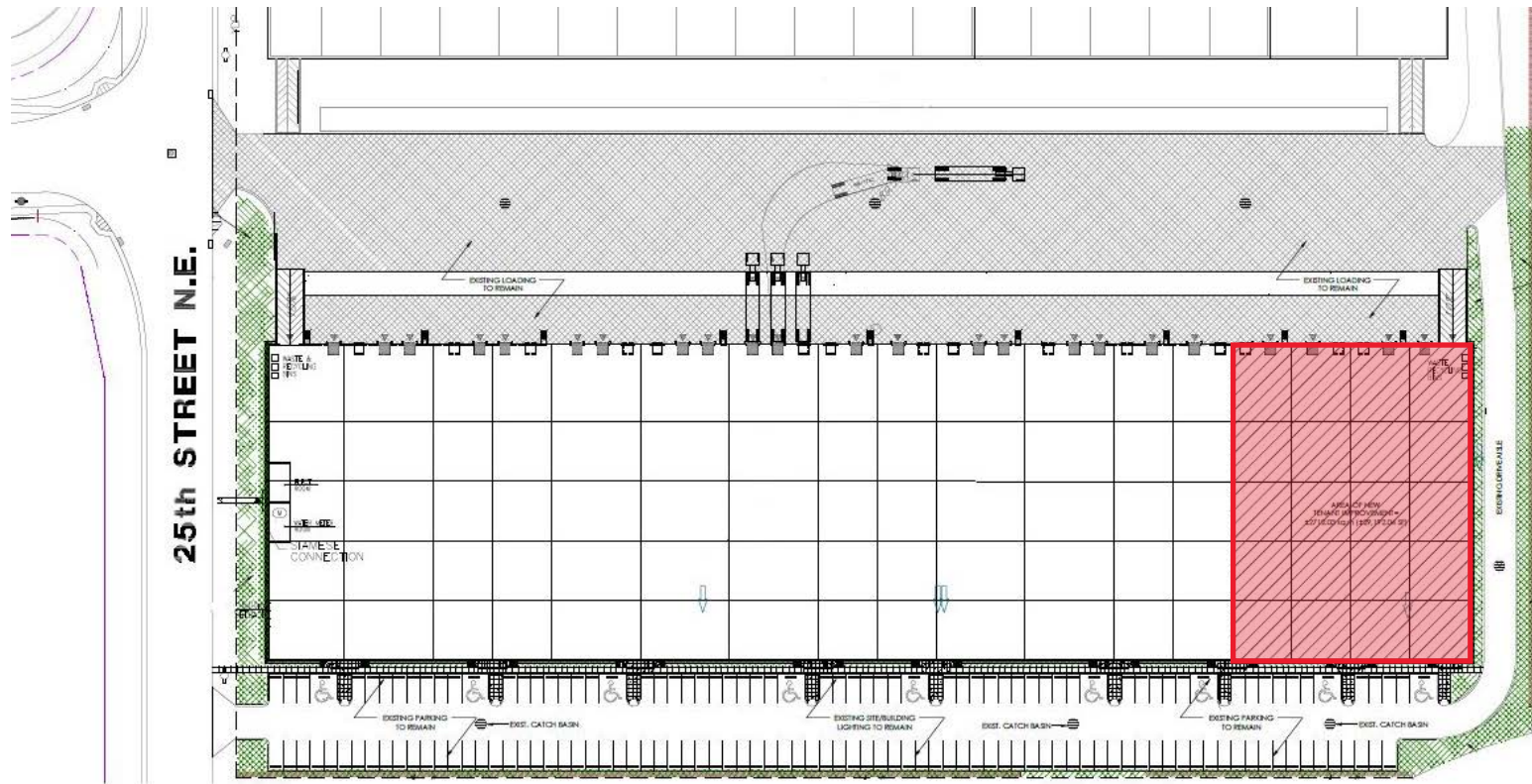
FOR SUBLEASE | Bay 133, 10710 - 25 Street NE, Calgary, AB



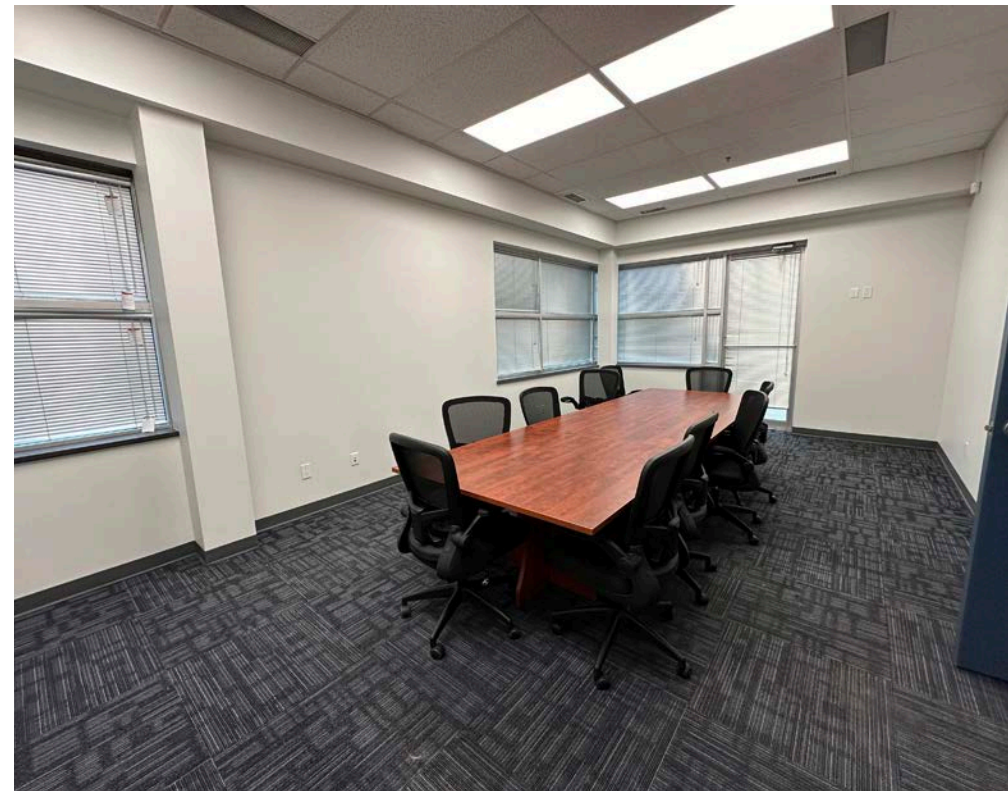
*Not to scale, not exactly as shown.

SITE PLAN

FOR SUBLEASE | Bay 133, 10710 - 25 Street NE, Calgary, AB



*Not to scale, not exactly as shown.



PHOTOS

LOCATION MAP



BRAD PILLING
Vice President
Industrial Sales & Leasing
D: 403 261 1121
C: 403 880 1419
brad.pilling@cushwake.com

BRENT JOHANNESSEN
Vice President
Industrial Sales & Leasing
D: 403 261 1116
C: 403 589 8600
brent.johannesen@cushwake.com

ZACK DARRAGH
Vice President
Industrial Sales & Leasing
D: 403 261 1120
C: 587 437 2595
zack.darragh@cushwake.com

SAM HURL
Senior Associate
Industrial Sales & Leasing
D: 403 261 1115
C: 403 630 7215
sam.hurl@cushwake.com



CUSHMAN & WAKEFIELD ULC
250 - 6 Ave SW, Suite 2400
Calgary, AB T2P 3H7
cushmanwakefield.com