

CUSHMAN &  
WAKEFIELD

LUND  
COMPANY



# 5064 S. 135TH STREET

OMAHA, NE 68137

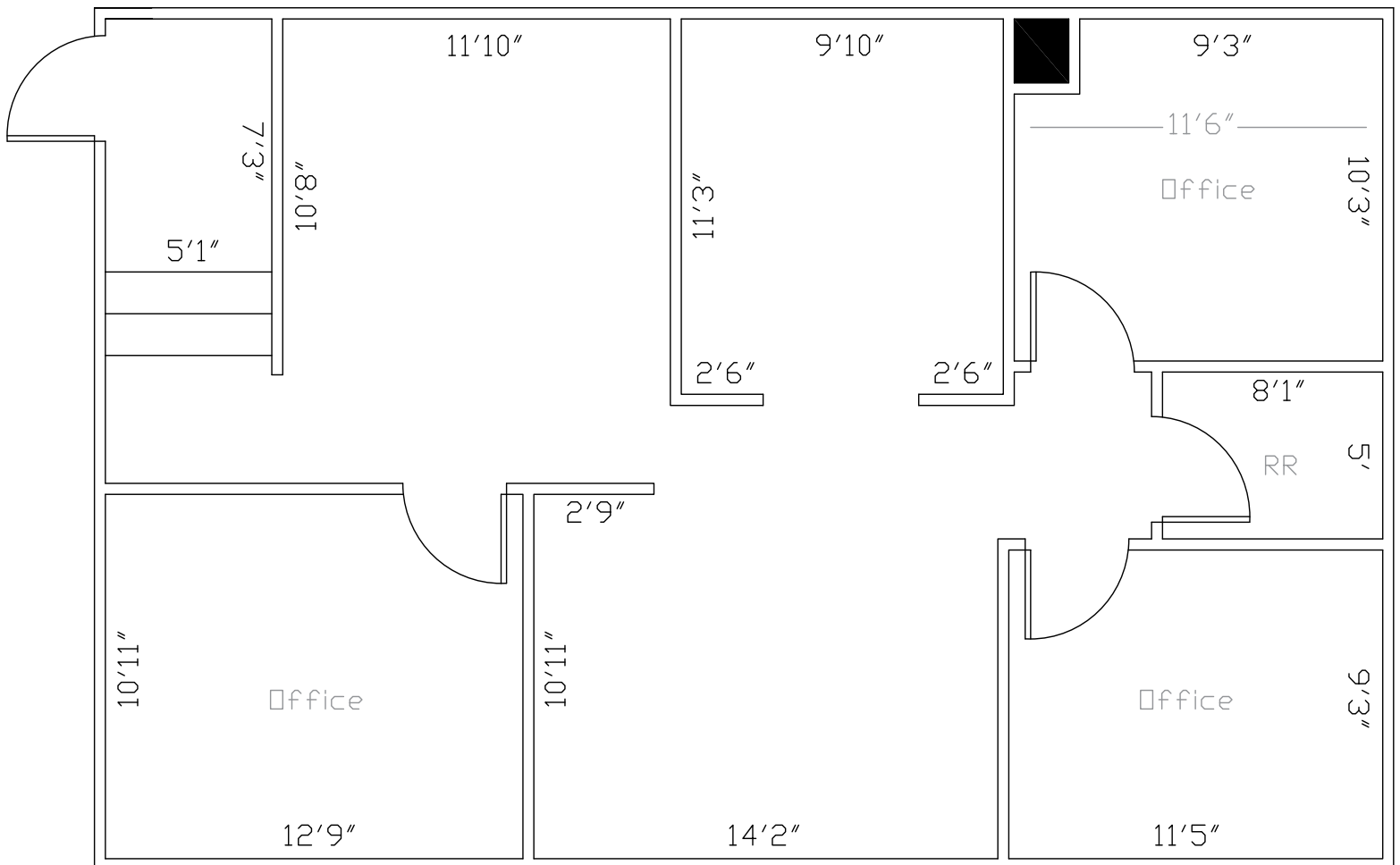
**1,200 SF Retail Space Available For Lease**  
**Lease Rate: \$22.50 Modified Gross**



# FLOOR PLAN

Join the Lumberyard District! This recently built-out office space with amazing finishes sits on 135th Street with easy access from Millard Avenue and Q Street.

Lease Rate:	\$22.50 Modified Gross
Monthly Rent:	\$2,250
Total Available:	1,200 SF
Building Size:	6,782 SF
Number of Spaces:	Two
Zoning:	CC
Estimated MUD Cost:	\$60 - \$120/month
Estimated OPPD Cost:	\$130/month



\*\* Floor plan measurements are approximate and are for illustration purposes only.



# PHOTOS/





# AERIAL MAP





# DEMOGRAPHICS



## DEMOGRAPHICS

	POPULATION	MEDIAN HH INCOME	NUMBER OF HOUSEHOLDS
1 - MILE	8,620	\$84,835	3,663
3 - MILE	88,697	\$114,434	36,508
5 - MILE	216,863	\$131,409	87,021





**CUSHMAN &  
WAKEFIELD**

**LUND**  
COMPANY

For more information, please contact:

**Holly Jones**

Director of Retail Services  
+1 402 548 4038  
[holly.jones@lundco.com](mailto:holly.jones@lundco.com)

**Trey MacKnight**

Associate  
+1 402 548 4079  
[trey.macknight@lundco.com](mailto:trey.macknight@lundco.com)

450 Regency Parkway, Suite 200  
Omaha, NE 68114  
+1 402 393 8811  
[lundco.com](http://lundco.com)

*Independently Owned and Operated / A Member of the Cushman & Wakefield Alliance*

©2024 Cushman & Wakefield. All rights reserved. The information contained in this communication is strictly confidential. This information has been obtained from sources believed to be reliable but has not been verified. NO WARRANTY OR REPRESENTATION, EXPRESS OR IMPLIED, IS MADE AS TO THE CONDITION OF THE PROPERTY (OR PROPERTIES) REFERENCED HEREIN OR AS TO THE ACCURACY OR COMPLETENESS OF THE INFORMATION CONTAINED HEREIN, AND SAME IS SUBMITTED SUBJECT TO ERRORS, OMISSIONS, CHANGE OF PRICE, RENTAL OR OTHER CONDITIONS, WITHDRAWAL WITHOUT NOTICE, AND TO ANY SPECIAL LISTING CONDITIONS IMPOSED BY THE PROPERTY OWNER(S). ANY PROJECTIONS, OPINIONS OR ESTIMATES ARE SUBJECT TO UNCERTAINTY AND DO NOT SIGNIFY CURRENT OR FUTURE PROPERTY PERFORMANCE.