

FIRST PLACE

2254 N. First Street: ±4,230 SF

2226 N. First Street: ±4,338 SF

2218 N. First Street: ±6,499 SF



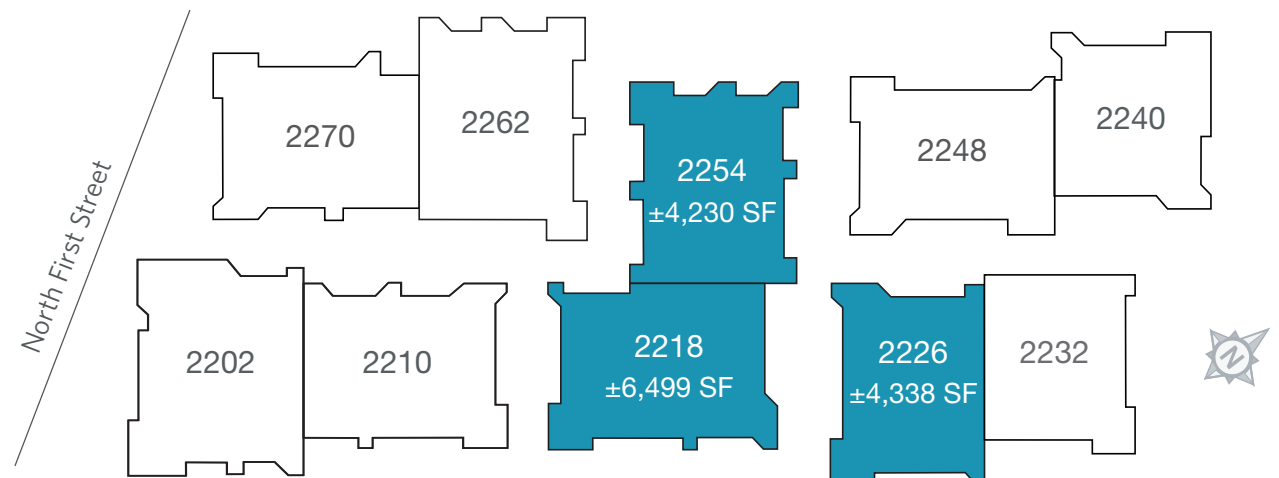
JON DECOITE
Managing Director
+1 408 615 3408
jon.decoite@cushwake.com
LIC #01471300

MIKE BAKER
Senior Director
+1 408 615 3406
mike.baker@cushwake.com
LIC #01884037



PROPERTY HIGHLIGHTS

- Free-standing Buildings
- Adjacent to VTA Light Rail Station
- Prominent Signage on North First Street Monument and Suite Entry
- Ample Parking Adjacent to Each Building
- No Load Factor or Restricted Building Hours - Suites Separately Metered
- Garden Setting with Outdoor Common Areas
- 4 Parking Spaces per 1,000 SF Leased
- Convenient Access to Highway 101 and Interstate 880

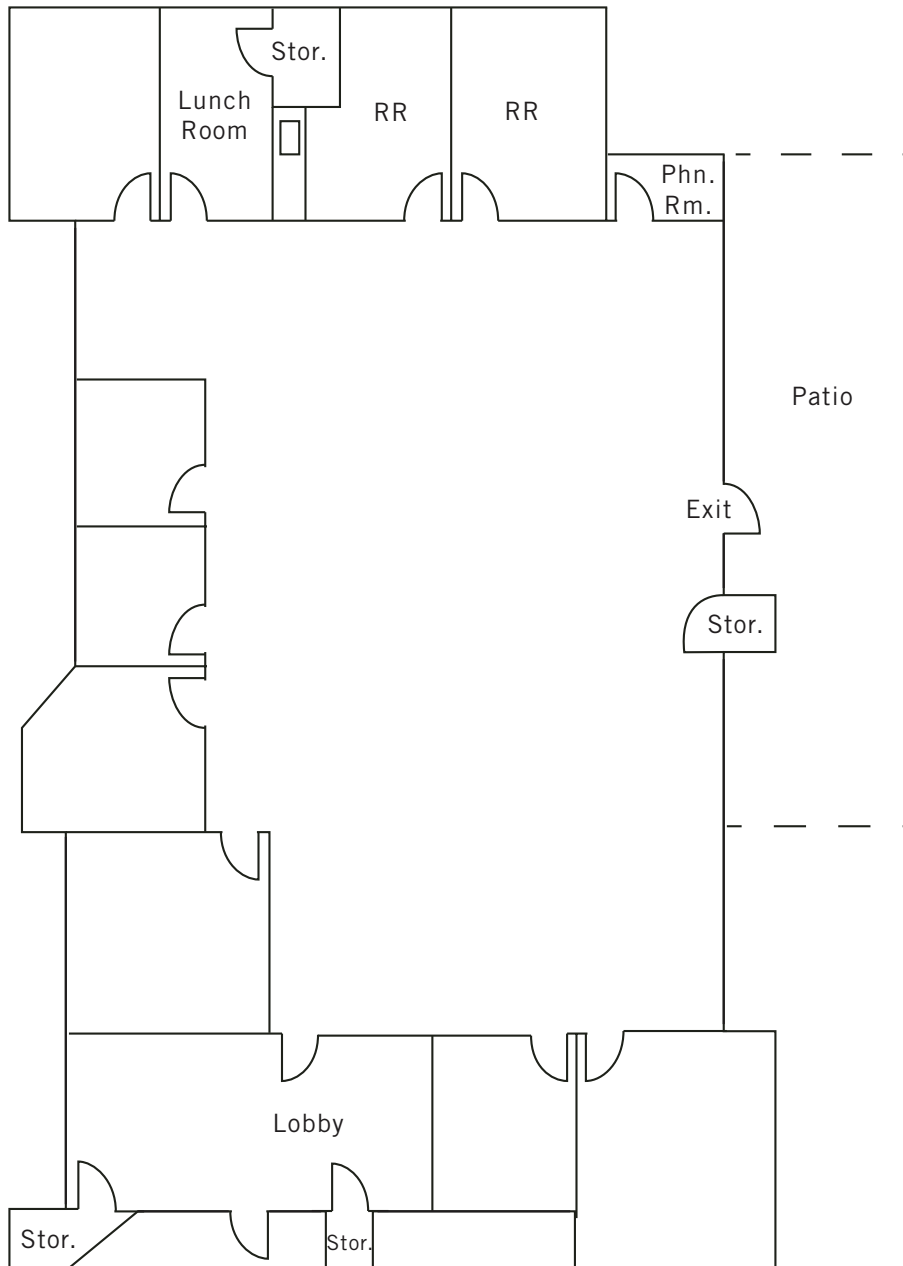


FIRST PLACE

2254 N. First Street, San Jose, CA

FLOOR PLAN

±4,230 SF - Available Now



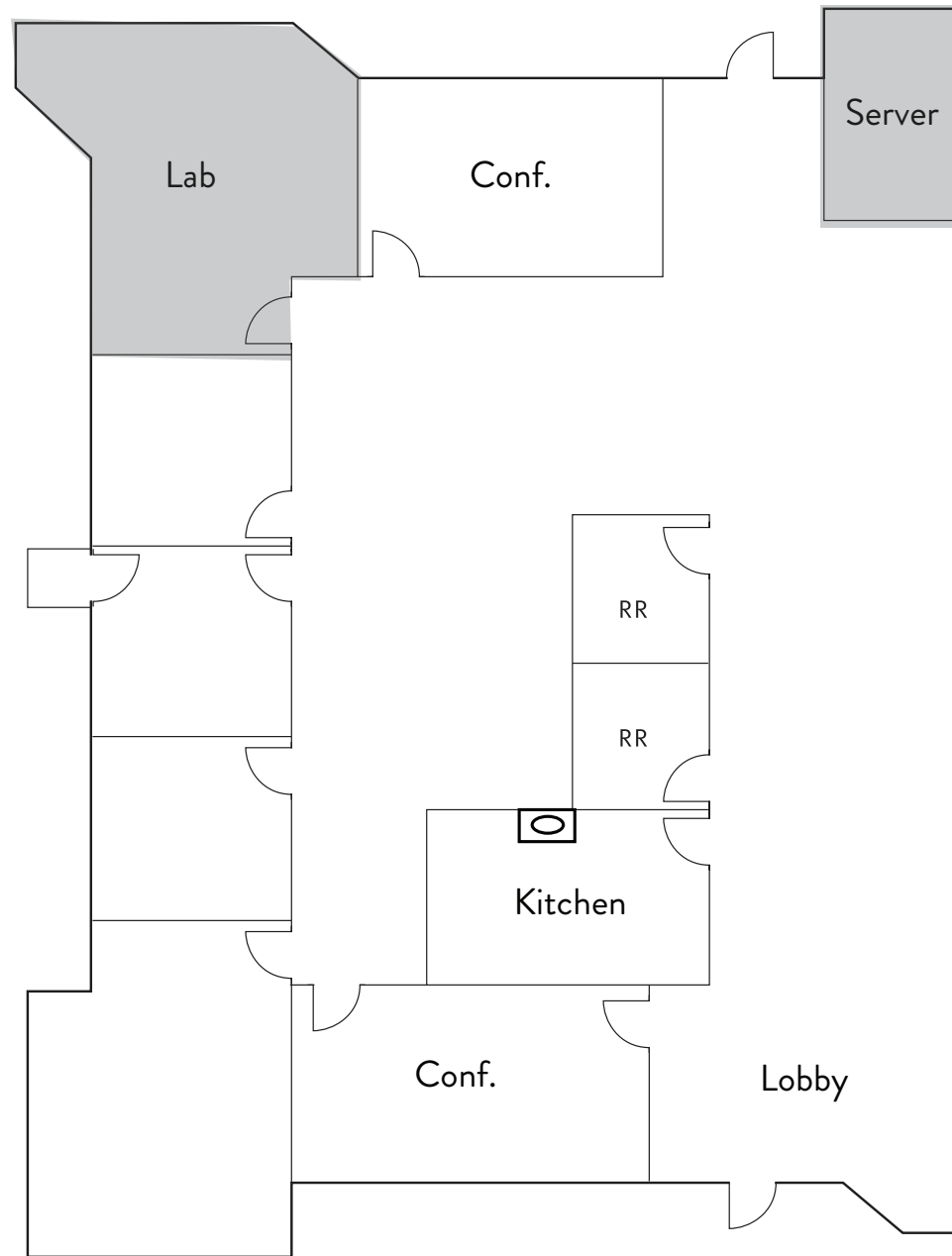
FIRST PLACE

2226 N. First Street, San Jose, CA

FLOOR PLAN

±4,338 SF - Available Now

■ VCT



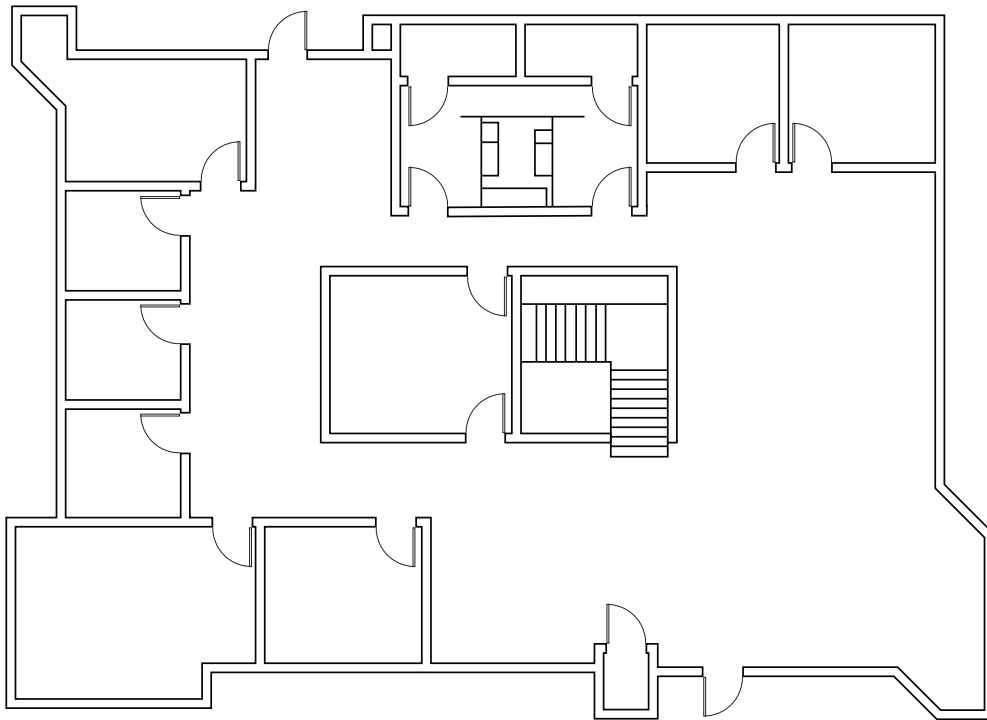
FIRST PLACE

2218 N. First Street, San Jose, CA

FLOOR PLAN

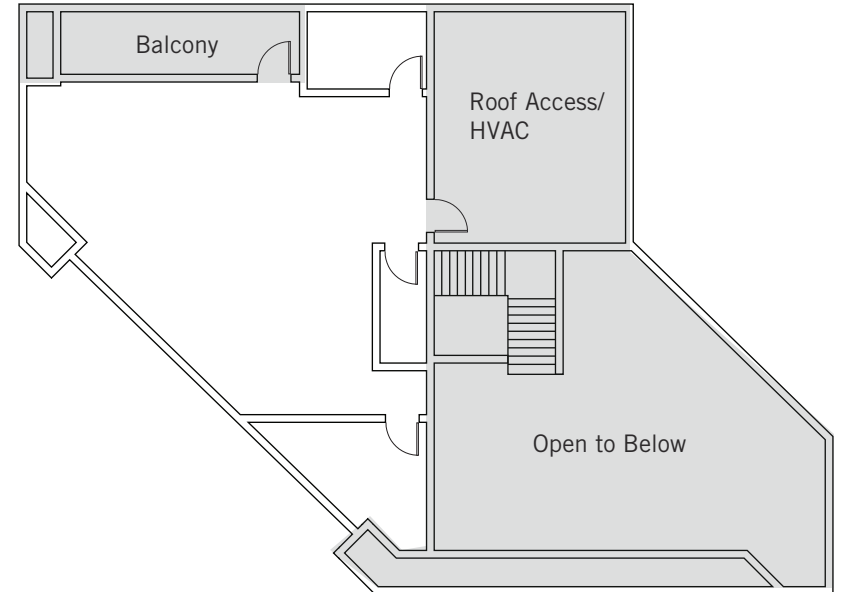
±6,499 SF - Available Now

First Floor



Entrance

Second Floor



FIRST PLACE

@ N. First Street, San Jose, CA

AERIAL

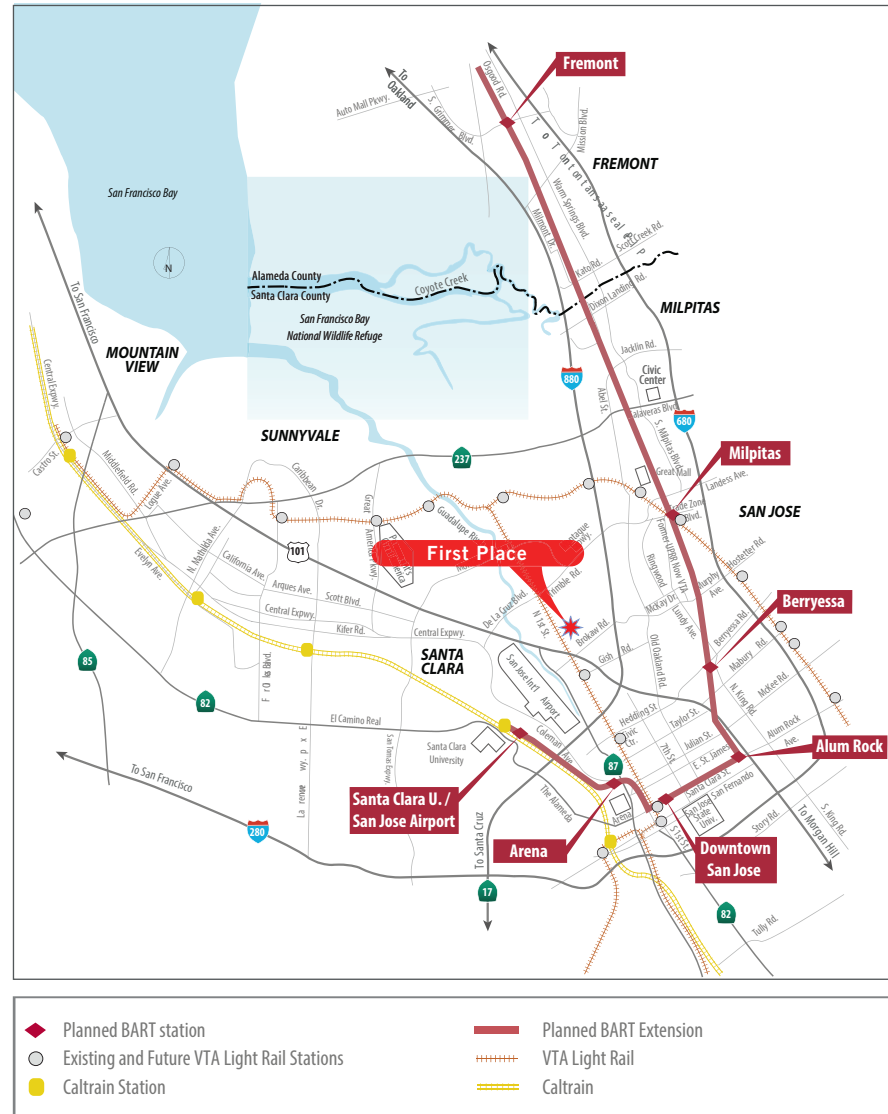


LOCATION:

First Place is located on the east side of North First Street, North of Brokaw and south of Charcot Avenue, approximately 1 mile east of Highway 101.

First Place is centrally located with easy access to Highways 101, 880 and 87.

TRANSPORTATION



FIRST PLACE

@ N. First Street, San Jose, CA

