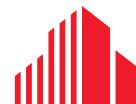




2,563 SF OFFICE SPACE FOR LEASE

FORMER BANK

200 N. 6TH STREET / BEATRICE, NE 68130



**CUSHMAN &
WAKEFIELD**

LUND
COMPANY

FORMER BANK

200 N. 6TH STREET / BEATRICE, NE 68130

Property Highlights

Vacant former bank building built in 2004 that is over 2,500 SF. This building has three (3) drive-thru lanes and is located along Highway 77, the main thoroughfare in Beatrice. The property is in a prime location for a variety of usings including medical, food, office and other services.

Sale Price: \$700,000

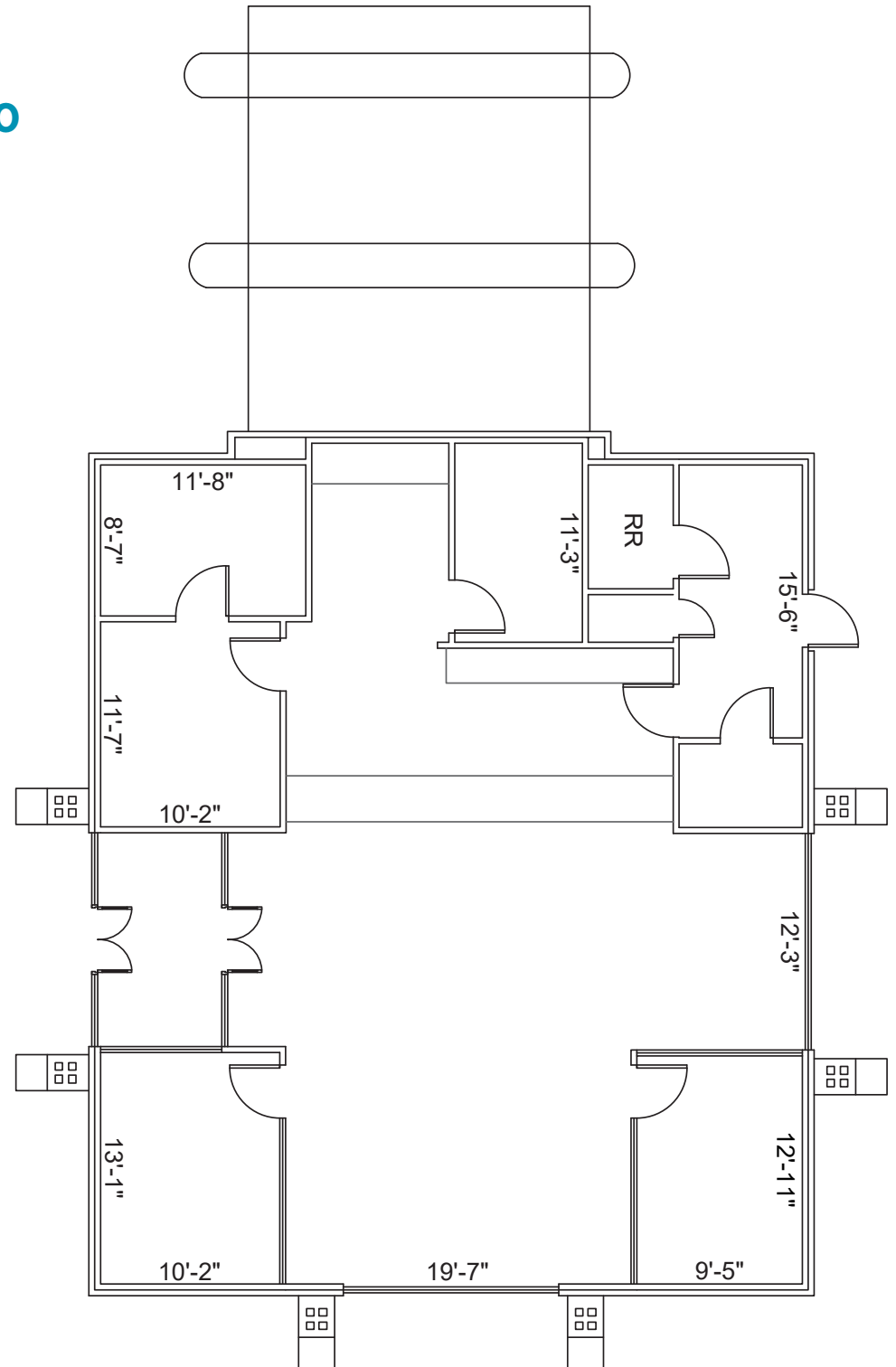
Building Size: 2,563 SF

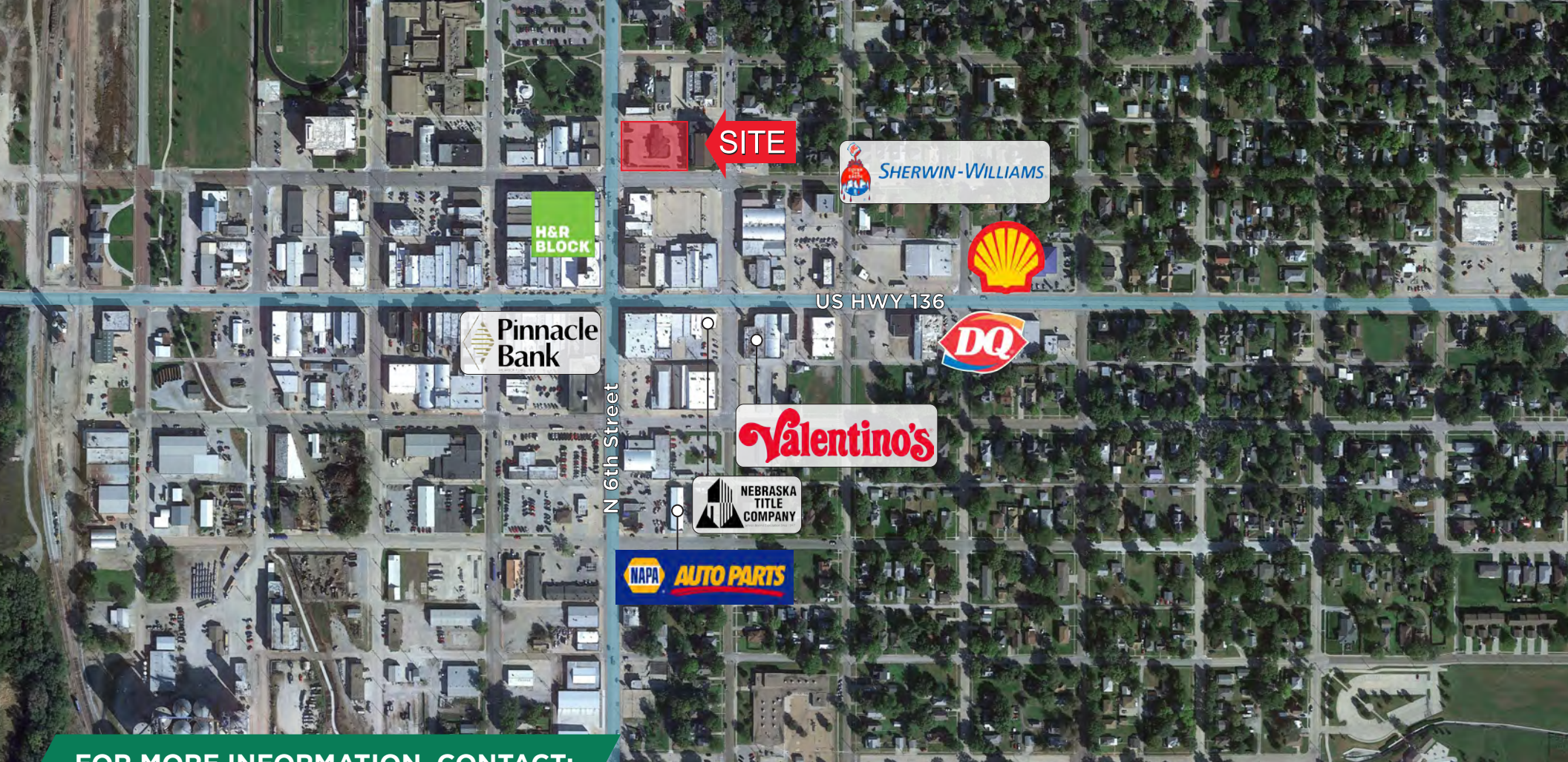
Year Built: 2004

No. of Floors: 1

Total Site Area: ±0.66 AC

Zoning: Commercial





FOR MORE INFORMATION, CONTACT:

DYLAN MCCABE, CCIM

Associate
+1 402 548 4075
dylan.mccabe@lundco.com

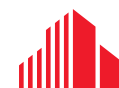
MARTIN PATZNER, CCIM, SIOR, CPM, RPA

Vice President, Office Specialist
+1 402 548 4033
martin.patzner@lundco.com

Independently Owned and Operated / A Member of the Cushman & Wakefield Alliance

©2025 Cushman & Wakefield. All rights reserved. The information contained in this communication is strictly confidential.

This information has been obtained from sources believed to be reliable but has not been verified. NO WARRANTY OR REPRESENTATION, EXPRESS OR IMPLIED, IS MADE AS TO THE CONDITION OF THE PROPERTY (OR PROPERTIES) REFERENCED HEREIN OR AS TO THE ACCURACY OR COMPLETENESS OF THE INFORMATION CONTAINED HEREIN, AND SAME IS SUBMITTED SUBJECT TO ERRORS, OMISSIONS, CHANGE OF PRICE, RENTAL OR OTHER CONDITIONS, WITHDRAWAL WITHOUT NOTICE, AND TO ANY SPECIAL LISTING CONDITIONS IMPOSED BY THE PROPERTY OWNER(S). ANY PROJECTIONS, OPINIONS OR ESTIMATES ARE SUBJECT TO UNCERTAINTY AND DO NOT SIGNIFY CURRENT OR FUTURE PROPERTY PERFORMANCE.



**CUSHMAN &
WAKEFIELD**

LUND
COMPANY