

# 6955 SIERRA COURT

Dublin, CA

**SECOND FLOOR OFFICE SPACE FOR LEASE | ±15,214 SF**



**Jon DeCoite**  
Managing Director  
+1 408 615 3408  
[jon.decoite@cushwake.com](mailto:jon.decoite@cushwake.com)  
Lic. #01471300

**Sutton Roley**  
Senior Director  
(408) 615 3433  
[sutton.roley@cushwake.com](mailto:sutton.roley@cushwake.com)  
Lic. #00793235

©2025 Cushman & Wakefield. All rights reserved. The information contained in this communication is strictly confidential. This information has been obtained from sources believed to be reliable but has not been verified. NO WARRANTY OR REPRESENTATION, EXPRESS OR IMPLIED, IS MADE AS TO THE CONDITION OF THE PROPERTY (OR PROPERTIES) REFERENCED HEREIN OR AS TO THE ACCURACY OR COMPLETENESS OF THE INFORMATION CONTAINED HEREIN, AND SAME IS SUBMITTED SUBJECT TO ERRORS, OMISSIONS, CHANGE OF PRICE, RENTAL OR OTHER CONDITIONS, WITHDRAWAL WITHOUT NOTICE, AND TO ANY SPECIAL LISTING CONDITIONS IMPOSED BY THE PROPERTY OWNER(S). ANY PROJECTIONS, OPINIONS OR ESTIMATES ARE SUBJECT TO UNCERTAINTY AND DO NOT SIGNIFY CURRENT OR FUTURE PROPERTY PERFORMANCE.



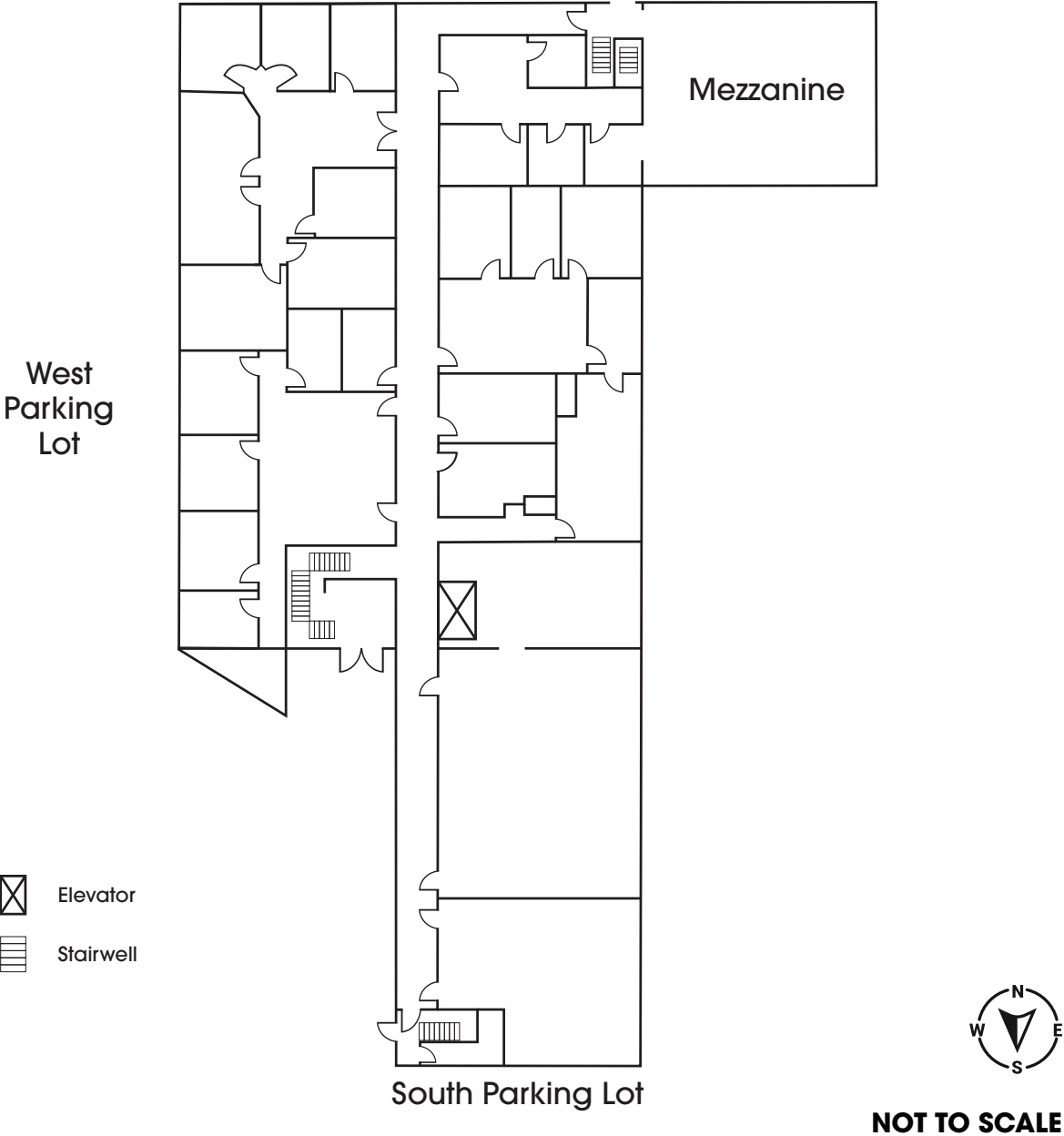
# PROPERTY HIGHLIGHTS

- Second Floor Office Space  $\pm 15,241$  SF
- Potentially Divisible
- $\pm 1.84/1,000$  Parking (28 Parking Spaces)
- Great Access to Highways 580 & 680
- Close to Dublin/Pleasanton Bart Station
- Near Numerous Retail Amenities



# FLOOR PLAN

SECOND FLOOR  
±15,814 SF

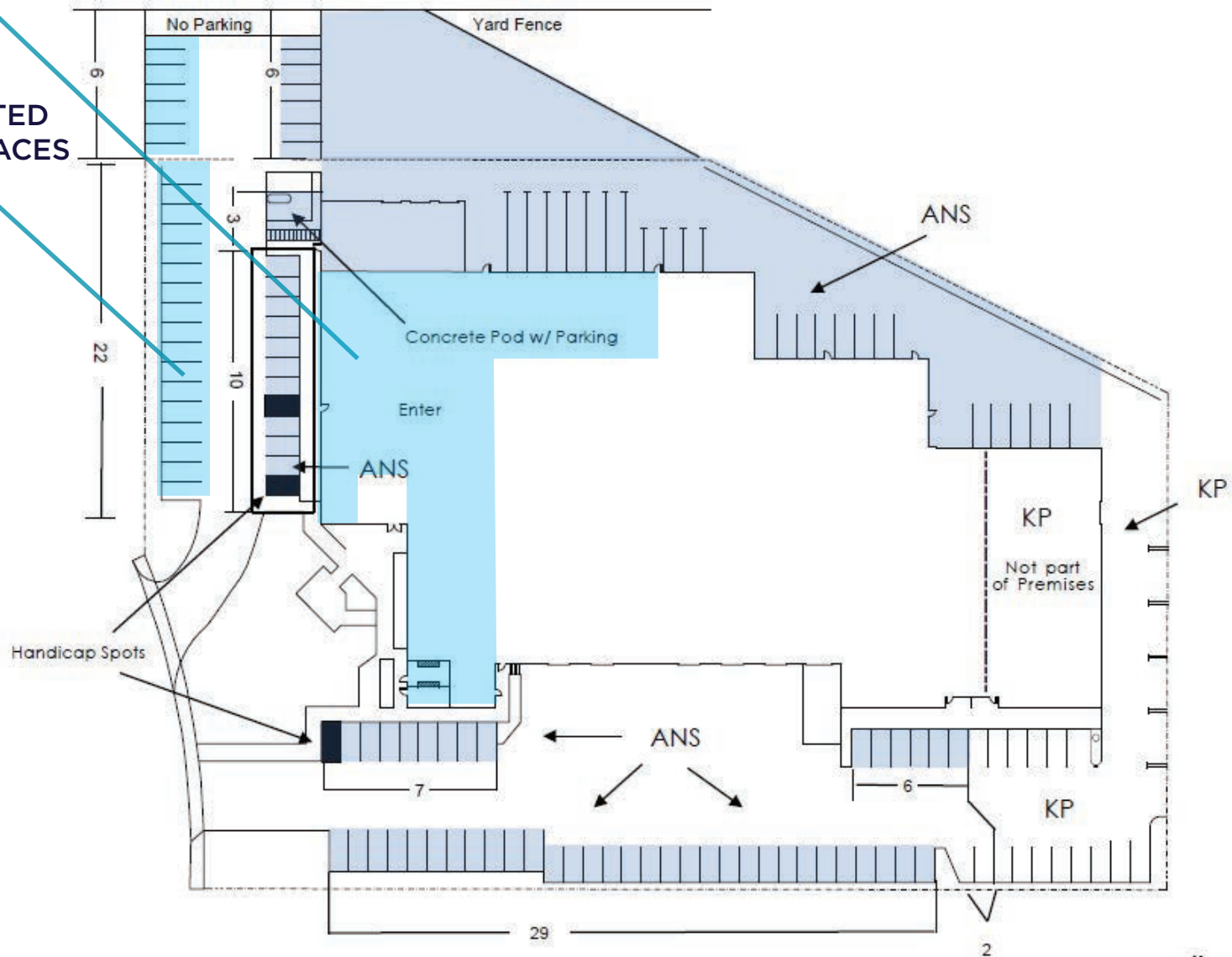




# PARKING SITE PLAN

SECOND FLOOR OFFICE SPACE FOR LEASE | AVAILABLE NOW  
±15,814 SF

28 DESIGNATED  
PARKING SPACES



\*ANS to have access to 60 parking stalls.

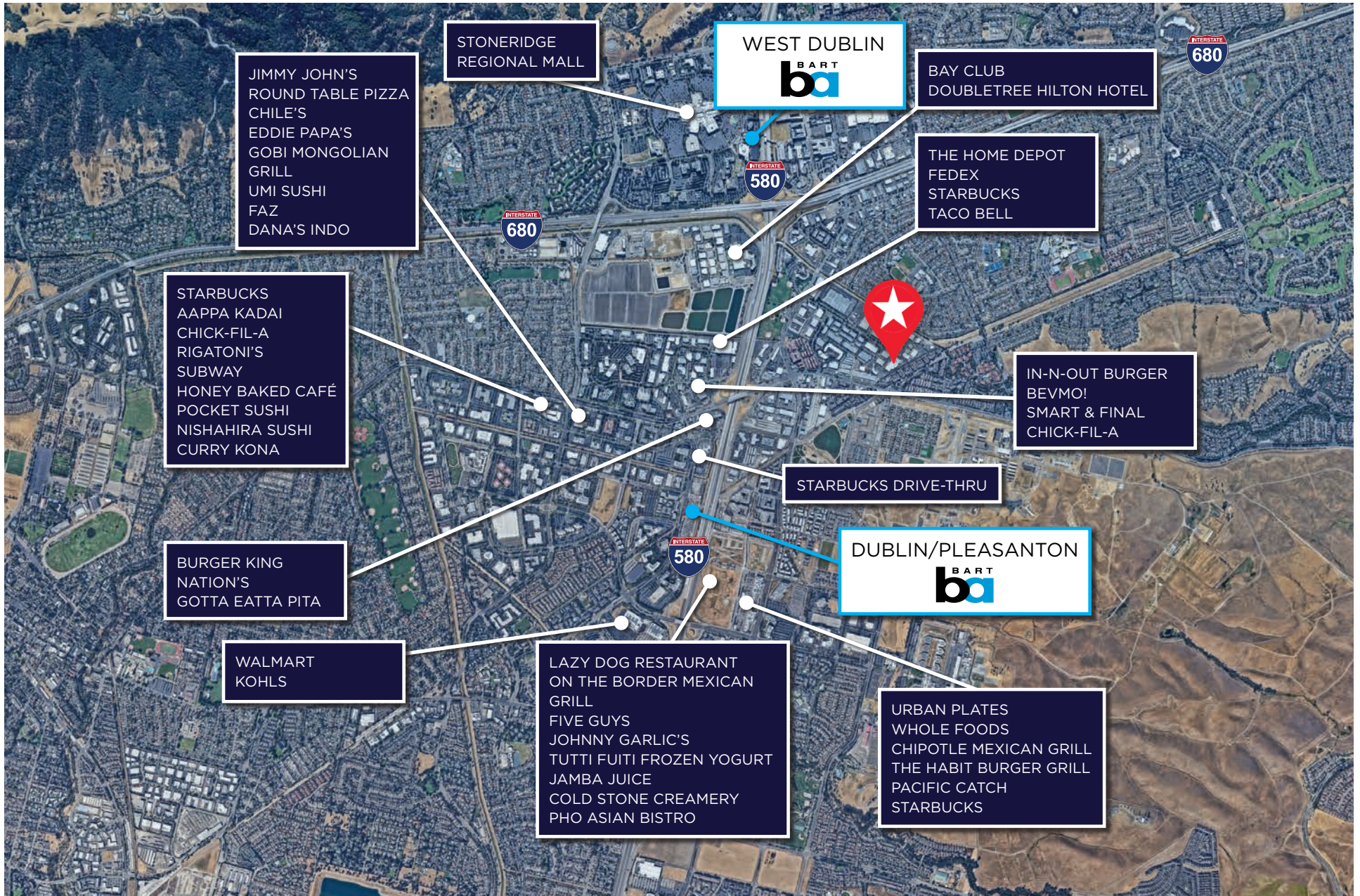


# NEIGHBORING AMENITIES





# NEARBY AMENITIES





# 6955 SIERRA COURT

Dublin, CA

**SECOND FLOOR OFFICE SPACE FOR LEASE | ±15,214 SF**



**Jon DeCoite**  
(408) 615 3408  
[jon.decoite@cushwake.com](mailto:jon.decoite@cushwake.com)  
Lic. #01471300

**Sutton Roley**  
(408) 615 3433  
[sutton.roley@cushwake.com](mailto:sutton.roley@cushwake.com)  
Lic. #00793235