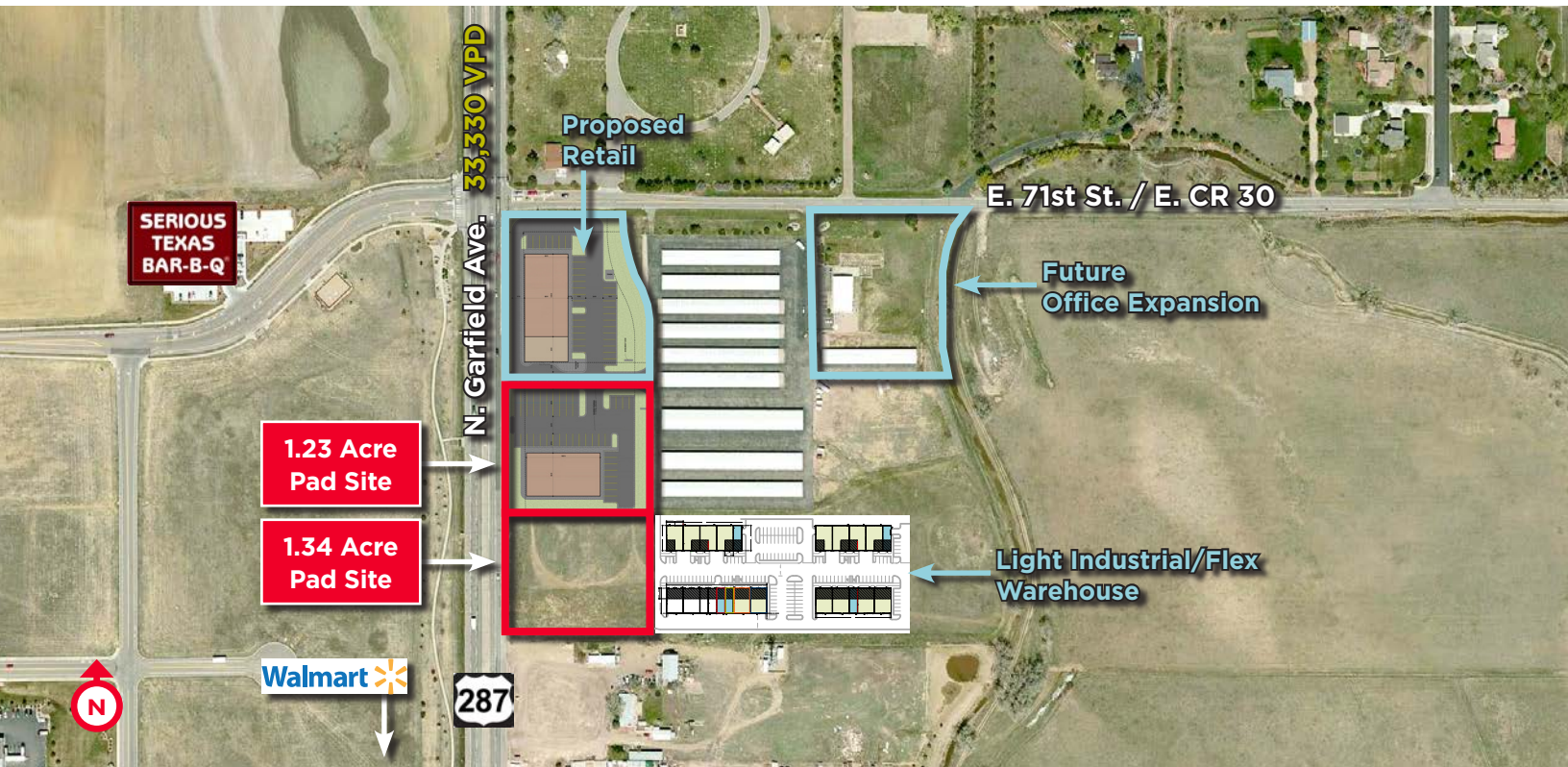


232 EAST COUNTY ROAD 30

LOVELAND, COLORADO 80538



Prime Retail Development Area

Sale Price: \$12.00/SF

This commercial land development opportunity allows for a variety of commercial uses, including retail, office, restaurants, banks and personal service shops. It is well located in the path of growth in the north Loveland area. The site is situated on a signalized intersection and is in close proximity to Walmart, Freddy's Steak Burger and Frozen Custard, Serious Texas Bar-B-Q and several other well-performing retailers. Build-to-suit options available.

PROPERTY HIGHLIGHTS

- 1.23 - 2.57 Acres (53,935 - 112,707 SF)
- Variety of commercial uses available
- Build-to-suit options available
- Close proximity to many well-performing retailers
- Located within rapid growth north Loveland area



232 EAST COUNTY ROAD 30

LOVELAND, COLORADO 80538



For more information, please contact:

AKI PALMER
Senior Director
+1 970 267 7727
aki.palmer@cushwake.com

772 Whalers Way, Suite 200
Fort Collins, Colorado 80525

T +1 970 776 3900
F +1 970 267 7419

cushmanwakefield.com