

Unique Commercial Opportunity in Ohio City

For Lease | 3007 Detroit Avenue, Cleveland, Ohio 44113



3007 Detroit Ave

- Unique opportunity for retail, restaurant and office users to lease unique commercial space in Ohio City -- one of Cleveland's most desirable retail and residential markets
- Three former residential homes 1,714 SF - 2,493 SF with central courtyard, views of Lake Erie, and high visibility along Detroit Avenue
- Moments away from the West 25th corridor, which sees over 3.5M visitors per year (source: Placer.ai), with over 2,000 new/proposed apartment units in the immediate area



Availability

# of Buildings	Three (3)
# of Floors	Two (2)
3003 Detroit	1,714 SF
3004 Detroit	1,729 SF
3007 Detroit	2,493 SF
Available on	Immediate

Site Plan



Detroit Ave

3003 - 1,714 SF

3007 - 2,493 SF

3004 - 1,729 SF

Church Ave

264,818

Population
(2024 | 5 Mile)

35.5

Median Age
(2024 | 5 Mile)

123,935

Households
(2024 | 5 Mile)

\$69,640

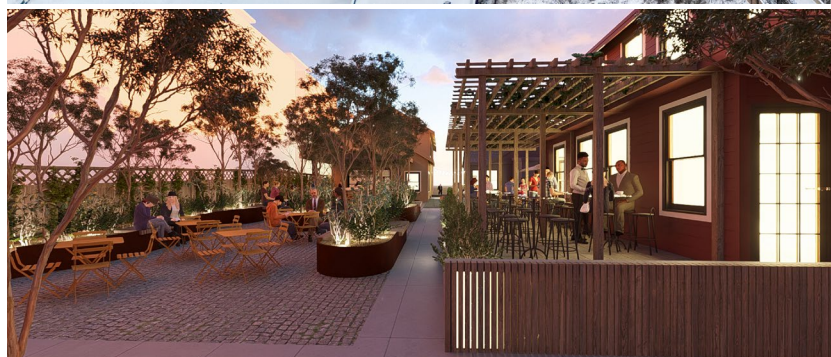
Household Income
(2024 | 5 Mile)

12,390

Total Businesses
(2024 | 5 Mile)

178,611

Total Employees
(2024 | 5 Mile)



An aerial photograph of the Ohio City neighborhood in Cleveland, Ohio. The map is overlaid with various labels and logos. A red star marks the location at 3007 Detroit Ave. Major streets shown include Detroit Ave, Franklin Blvd, Lorain Ave, Fulton Rd, W 25th St, and W 44th St. Key landmarks such as Max Hayes High School, Garrett Morgan School of Science, and Lutheran Hospital are labeled. Numerous business logos are scattered throughout, including Roaming Biscuit, Luca's Bakery, Alea Patron Saint, Haven Nail Studio, C45, GYO, Great Lakes Health & Wellness, Amba, Rising Star Coffee Roasters, Banana Blossom Thai Cuisine, Ecodhouse Brewing, The Hub Center, Soucy Brew Works, Transformer Station, The Harp, Cleveland Bagel, Guanajitas, Johnny Mango, Phoenix Coffee Co., Heck's Cafe, Bartleby, Wendy's, Planet Fitness, and others. A large white box in the top right corner contains the text "OHIO CITY" with three stars above it. In the bottom right corner, there is a logo for "INTRO EDDA COFFEE ROASTERS PIONEER". The map also shows the RTA (Regional Transit Authority) station near West Side Market.



**3007 DETROIT AVENUE
CLEVELAND, OHIO 44113**

CAMERON CALLAHAN

Associate

ccallahan@crescorealestate.com

+1 216 232 4101

CONOR COAKLEY

Senior Vice President

ccoakley@crescorealestate.com

+1 216 232 4102

AUSTIN LOVE

Associate

alove@crescorealestate.com

+1 216 525 1395



Cushman & Wakefield | CRESCO
6100 Rockside Woods Blvd, Suite 200
Cleveland, Ohio 44131

crescorealestate.com

©2025 Cushman & Wakefield. All rights reserved. The information contained in this communication is strictly confidential. This information has been obtained from sources believed to be reliable but has not been verified. NO WARRANTY OR REPRESENTATION, EXPRESS OR IMPLIED, IS MADE AS TO THE CONDITION OF THE PROPERTY (OR PROPERTIES) REFERENCED HEREIN OR AS TO THE ACCURACY OR COMPLETENESS OF THE INFORMATION CONTAINED HEREIN, AND SAME IS SUBMITTED SUBJECT TO ERRORS, OMISSIONS, CHANGE OF PRICE, RENTAL OR OTHER CONDITIONS, WITHDRAWAL, WITHOUT NOTICE, AND TO ANY SPECIAL LISTING CONDITIONS IMPOSED BY THE PROPERTY OWNER(S). ANY PROJECTIONS, OPINIONS OR ESTIMATES ARE SUBJECT TO UNCERTAINTY AND DO NOT SIGNIFY CURRENT OR FUTURE PROPERTY PERFORMANCE.