



# FOR LEASE

Air-Conditioned Warehouse

1100 N SWIFT RD, ADDISON, IL

**134,790 SF**



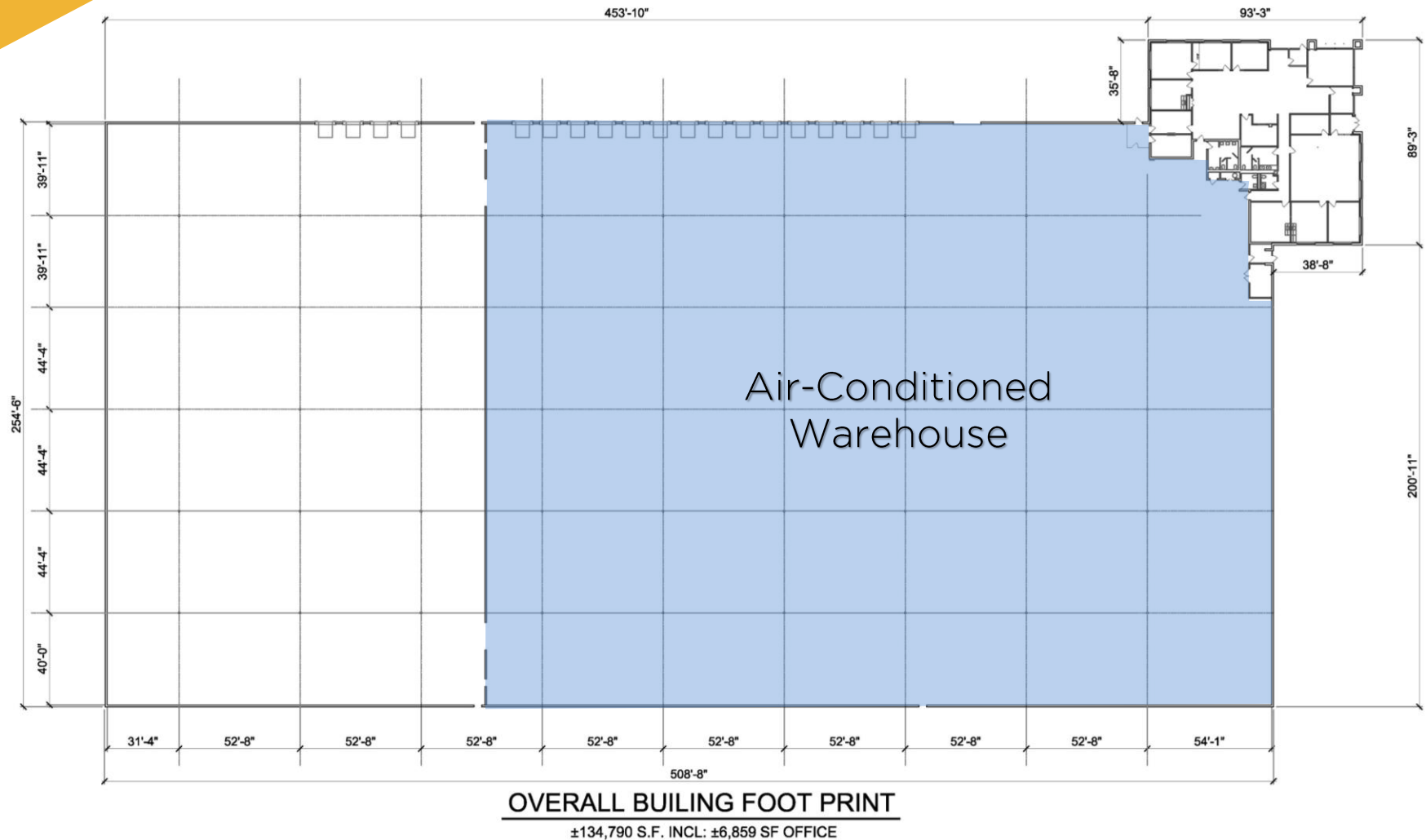


# PROPERTY HIGHLIGHTS

<b>Building Size</b>	134,790 SF
<b>Office Size</b>	6,859 SF
<b>Air-Conditioned Warehouse</b>	±87,000 SF
<b>Year Built</b>	1995
<b>Ceiling Height</b>	31'
<b>Truck Docks</b>	19 Exterior Docks w/levelers
<b>Drive-In-Doors</b>	1 Drive-in-Door
<b>Sprinkler System</b>	ESFR
<b>Parking</b>	49
<b>Trailer Parking</b>	11
<b>Power</b>	2,000 amps @ 480v
<b>Land</b>	6.22 acres
<b>Zoning</b>	I-1 Heavy Commercial / Light Industrial

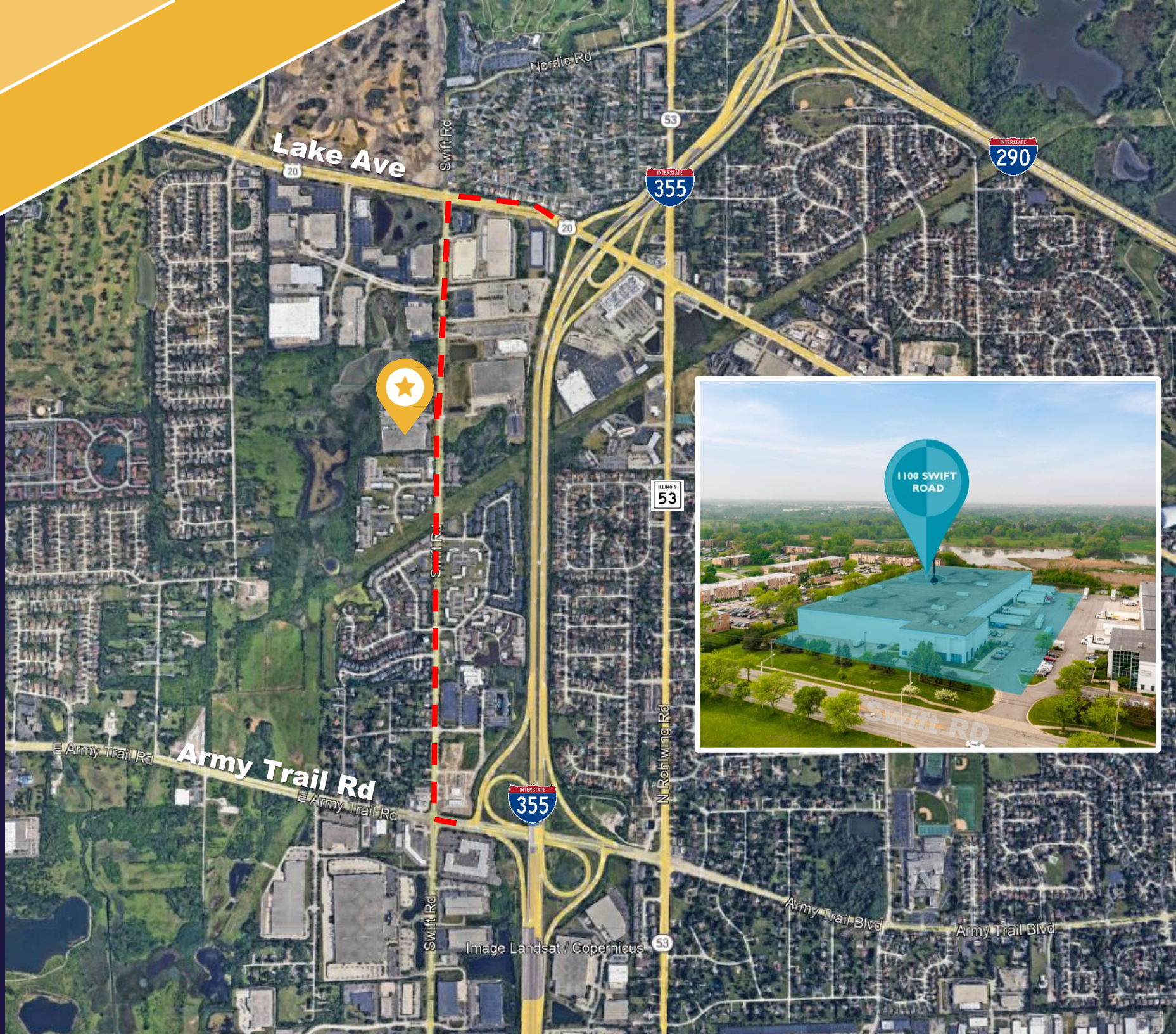


# 134,790 SF



- 100% Food Grade Facility
- ±87,000 sf of air-conditioned warehouse space
- 11 on site trailer parking spaces
- Institutionally Owned and Managed
- Low DuPage County RE Taxes
- Within Meadows Business Park
- Immediate access to I-355 via Lake Street Interchange and Army Trail Road

# LOCATION MAP





1100 N. SWIFT RD

For more information,  
please contact:

**Britt Casey**

Executive Vice Chairman

847 518 3280

[Britt.Casey@cushwake.com](mailto:Britt.Casey@cushwake.com)

**Jeff Matella**

Director

847 720 1349

[Jeff.Matella@cushwake.com](mailto:Jeff.Matella@cushwake.com)

©2024 Cushman & Wakefield. All rights reserved. The information contained in this communication is strictly confidential. This information has been obtained from sources believed to be reliable but has not been verified. NO WARRANTY OR REPRESENTATION, EXPRESS OR IMPLIED, IS MADE AS TO THE CONDITION OF THE PROPERTY (OR PROPERTIES) REFERENCED HEREIN OR AS TO THE ACCURACY OR COMPLETENESS OF THE INFORMATION CONTAINED HEREIN, AND SAME IS SUBMITTED SUBJECT TO ERRORS, OMISSIONS, CHANGE OF PRICE, RENTAL OR OTHER CONDITIONS, WITHDRAWAL WITHOUT NOTICE, AND TO ANY SPECIAL LISTING CONDITIONS IMPOSED BY THE PROPERTY OWNER(S). ANY PROJECTIONS, OPINIONS OR ESTIMATES ARE SUBJECT TO UNCERTAINTY AND DO NOT SIGNIFY CURRENT OR FUTURE PROPERTY PERFORMANCE.

9500 West Bryn Mawr Ave  
Suite 600

Rosemont, Illinois 60018  
[cushmanwakefield.com](http://cushmanwakefield.com)

