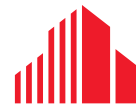




FORMER COOLGREENS FOR SUBLEASE

LOVELAND CENTRE

**8990 W. CENTER ROAD, SUITE 170
OMAHA, NE 68124**



**CUSHMAN &
WAKEFIELD**

LUND
COMPANY

FORMER COOLGREENS

8990 W. CENTER ROAD | SUITE 170

Property Features

Restaurant Space at Loveland Centre

High-visibility and well-trafficked commercial restaurant space available in a prime location. This former restaurant features 1,800 SF of versatile space with an efficient kitchen, assembly-style order/prep line, and dining area.

**Contact listing agents regarding FF&E.

Lease Rate:	\$30.00 PSF NNN
-------------	-----------------

Space Available:	1,800 SF
------------------	----------

Year Built:	2015
-------------	------

Zoning:	CC
---------	----

Available:	Immediately
------------	-------------

Anchor:	Fareway Meat Market, Dunkin Donuts, The Fold, Le Quartier Bakery and The Bookworm
---------	---

Traffic Counts:	53,108 EADT
-----------------	-------------

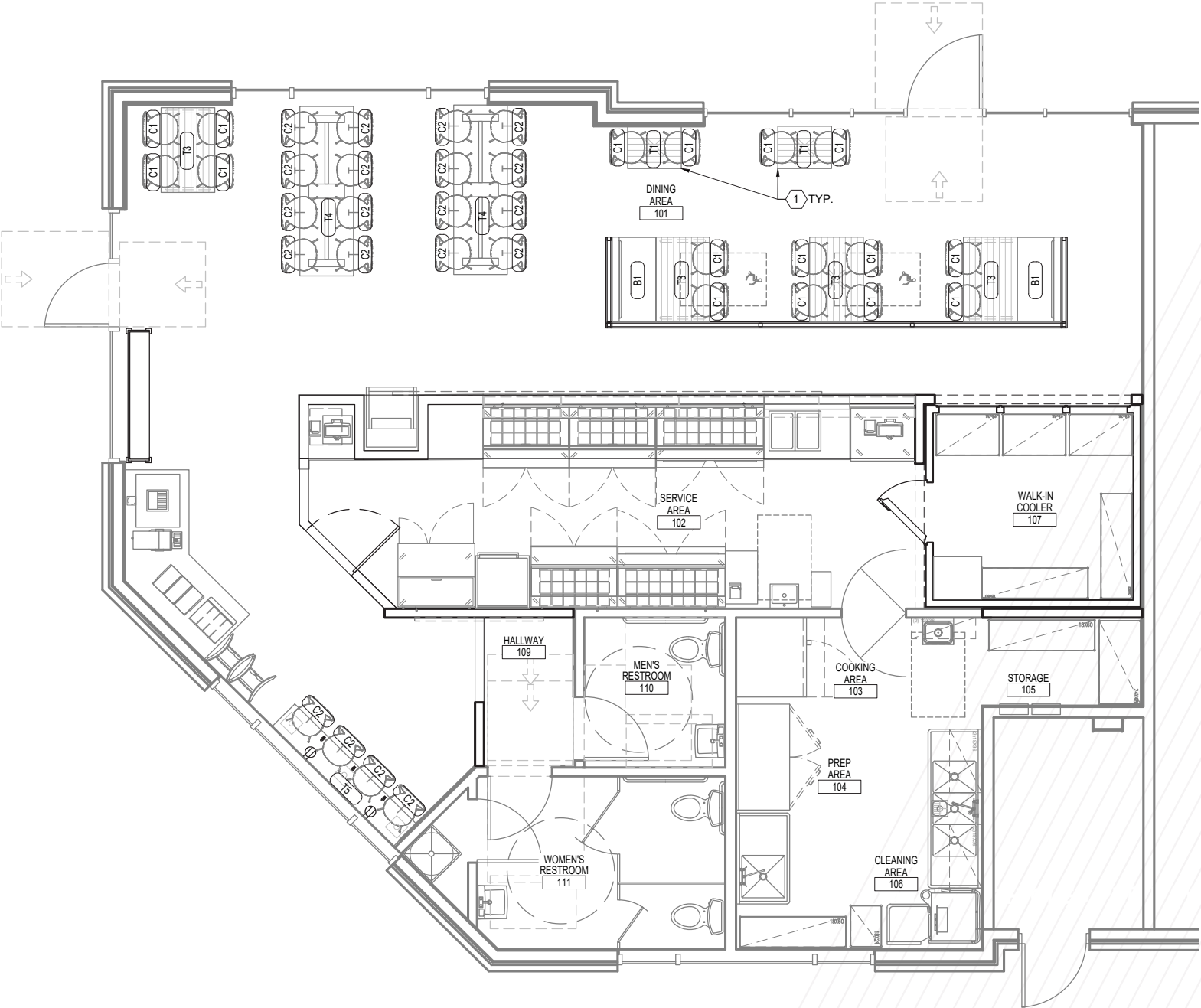


FLOOR PLAN

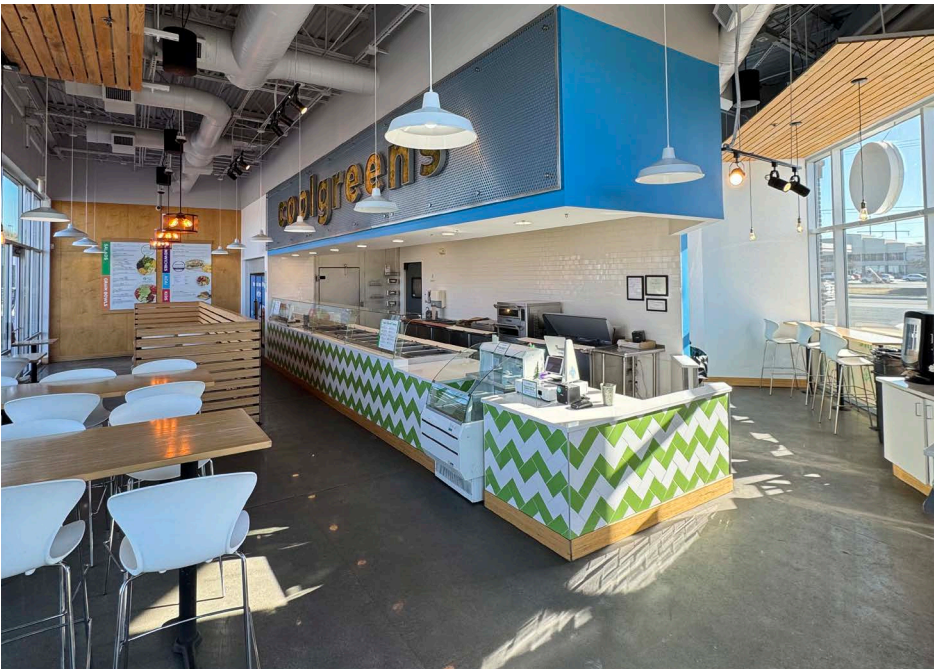
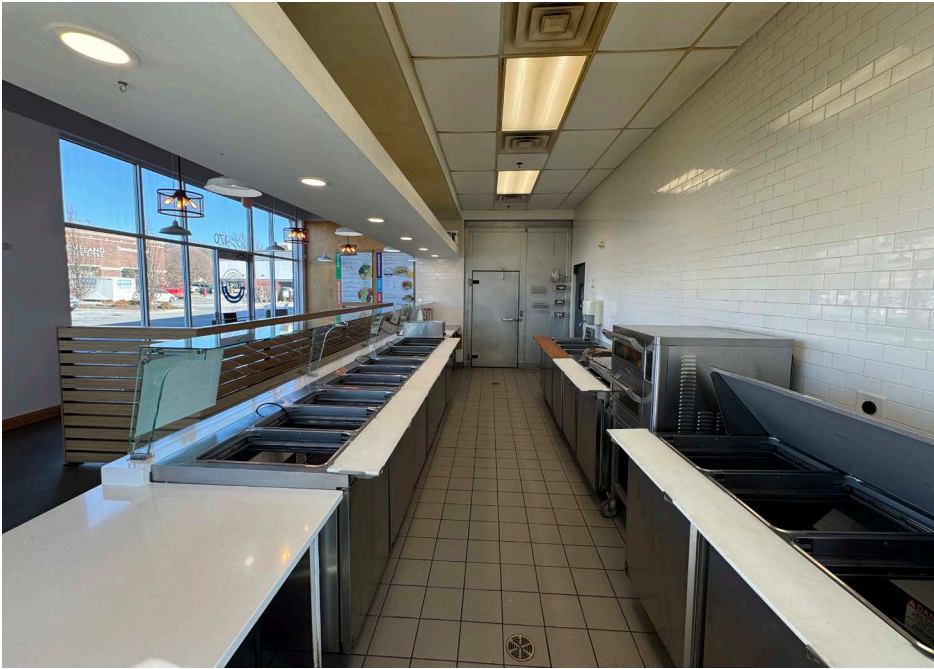
1,800 SF

ENTRY/EXIT

SIDE
ENTRY/EXIT



INTERIOR PHOTOS



AERIAL MAP





FOR MORE INFORMATION, CONTACT:

TREY MACKNIGHT

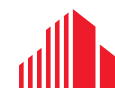
Associate
+1 402 548 4079
trey.macknight@lundco.com

HOLLY JONES

Director of Retail Services
+1 402 548 4038
holly.jones@lundco.com

Independently Owned and Operated / A Member of the Cushman & Wakefield Alliance

©2025 Cushman & Wakefield. All rights reserved. The information contained in this communication is strictly confidential. This information has been obtained from sources believed to be reliable but has not been verified. NO WARRANTY OR REPRESENTATION, EXPRESS OR IMPLIED, IS MADE AS TO THE CONDITION OF THE PROPERTY (OR PROPERTIES) REFERENCED HEREIN OR AS TO THE ACCURACY OR COMPLETENESS OF THE INFORMATION CONTAINED HEREIN, AND SAME IS SUBMITTED SUBJECT TO ERRORS, OMISSIONS, CHANGE OF PRICE, RENTAL OR OTHER CONDITIONS, WITHDRAWAL WITHOUT NOTICE, AND TO ANY SPECIAL LISTING CONDITIONS IMPOSED BY THE PROPERTY OWNER(S). ANY PROJECTIONS, OPINIONS OR ESTIMATES ARE SUBJECT TO UNCERTAINTY AND DO NOT SIGNIFY CURRENT OR FUTURE PROPERTY PERFORMANCE.



**CUSHMAN &
WAKEFIELD**

LUND
COMPANY