

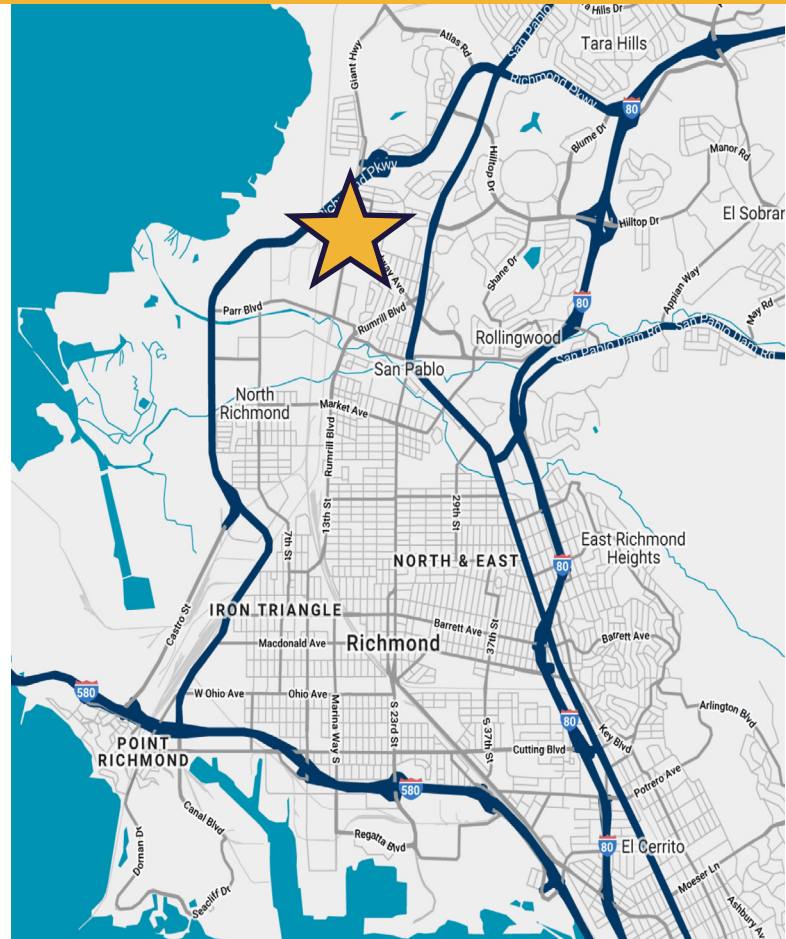
FOR LEASE
2775 GIANT ROAD
RICHMOND, CA



INDUSTRIAL BUILDING WITH EXTRA LAND

PROPERTY HIGHLIGHTS

- ±28,000 SF Manufacturing Building
- ±1,500 SF Ground Floor Office Space
- ±1,500 SF Mezzanine Above
- Four (4) Grade Level Doors
- Well Maintained Metal Construction
- 800 Amps, 220/240 Volts *(To be Verified)*
- ±20'-25' Clear Height
- IL Zoning ("Industrial Light")
- Fully Sprinklered, Skylights Throughout
- Solar Panels on Roof
- Yard Available
- ±6,000 SF, 2-Story Warehouse Mezzanine
- Extensive Floor Drain System in Place



JEFFREY LEENHOUTS

Managing Director | 510.267.6014 | jeffrey.leenhouts@cushwake.com | CA Lic. #01063048

TREVOR BUCK

Executive Director | 415.987.4811 | trevor.buck@cushwake.com | CA Lic. #01255462



FOR LEASE
2775 GIANT ROAD
RICHMOND, CA



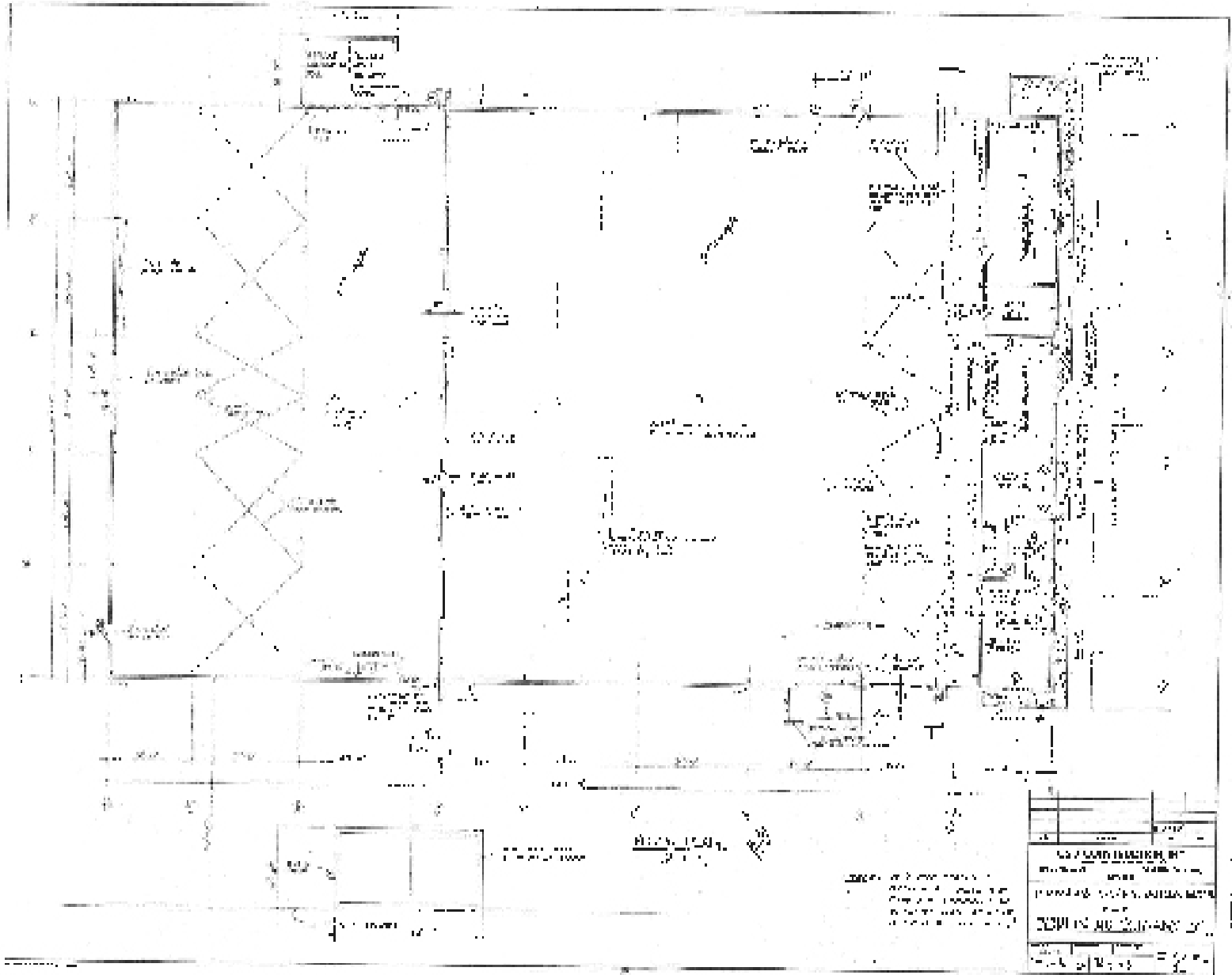
JEFFREY LEENHOUTS
Managing Director | 510.267.6014 | jeffrey.leenhouts@cushwake.com | CA Lic. #01063048

TREVOR BUCK
Executive Director | 415.987.4811 | trevor.buck@cushwake.com | CA Lic. #01255462



FOR LEASE
2775 GIANT ROAD
RICHMOND, CA

FLOOR PLAN

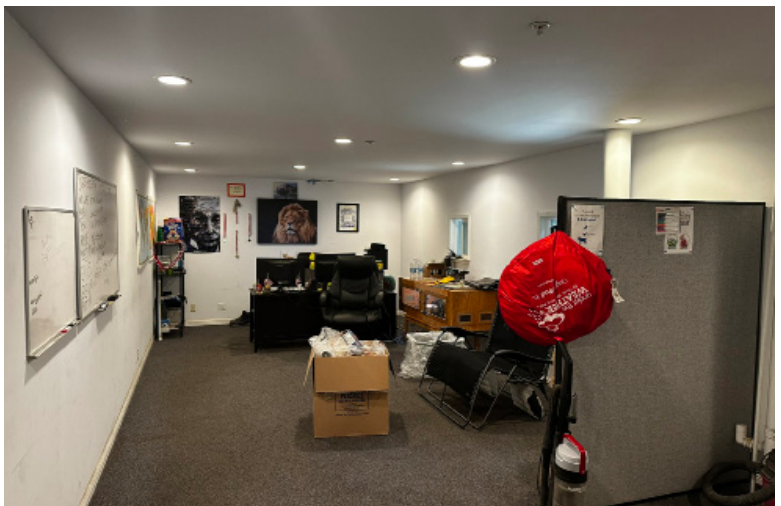


JEFFREY LEENHOUTS
Managing Director | 510.267.6014 | jeffrey.leenhouts@cushwake.com | CA Lic. #01063048

TREVOR BUCK
Executive Director | 415.987.4811 | trevor.buck@cushwake.com | CA Lic. #01255462



FOR LEASE
2775 GIANT ROAD
RICHMOND, CA



JEFFREY LEENHOUTS
Managing Director | 510.267.6014 | jeffrey.leenhouts@cushwake.com | CA Lic. #01063048

TREVOR BUCK
Executive Director | 415.987.4811 | trevor.buck@cushwake.com | CA Lic. #01255462