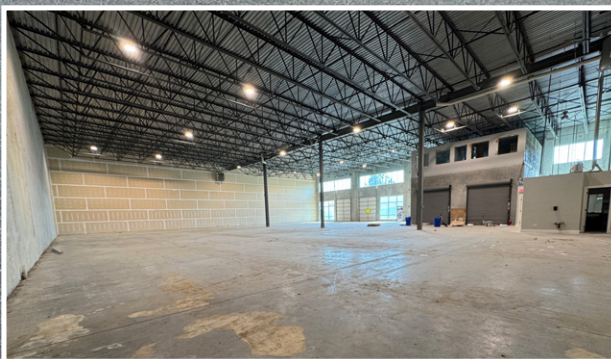


# UNITS 111-114 8952 HOLT ROAD

SURREY, BC

NEWLY RENOVATED OFFICES



## 13,160 SF AVAILABLE



**Kevin Volz**  
Personal Real Estate Corporation  
Vice President, Industrial  
+1 604 640 5851  
[kevin.volz@cushwake.com](mailto:kevin.volz@cushwake.com)

**Jot Mattu**  
Senior Associate, Industrial  
+1 604 639 9352  
[jot.mattu@cushwake.com](mailto:jot.mattu@cushwake.com)

**Rick Dhanda**  
Associate Vice President, Industrial  
+1 604 640 5816  
[rick.dhanda@cushwake.com](mailto:rick.dhanda@cushwake.com)

**Andrew Green**  
Personal Real Estate Corporation  
Vice President, Industrial  
+1 604 640 5800  
[andrew.green@cushwake.com](mailto:andrew.green@cushwake.com)

# UNITS 111-114 8952 HOLT ROAD

## SURREY, BC



### LOCATION

The subject property is located off of Scott Road and 88th Avenue, adjacent to BC Hydro and the Pacific Press properties. Excellent access is provided to Scott Road, 88th Avenue, Nordel Way, the Pattullo and the Alex Fraser Bridges. Excellent access is provided to Scott Road, 88th Avenue, Nordel Way, the Pattullo and the Alex Fraser Bridges.

### BUILDING FEATURES

- Concrete tilt-up construction
- Multi-tenant complex
- Fully Sprinklered
- Metal halide lighting
- Forced air gas warehouse heaters
- Min 23' ceilings in warehouse
- Covered dock loading with levelers
- Grade loading
- On-site parking
- Professionally managed by Canreal Management Corporation

### ZONING

I-L (Light Impact Industrial)

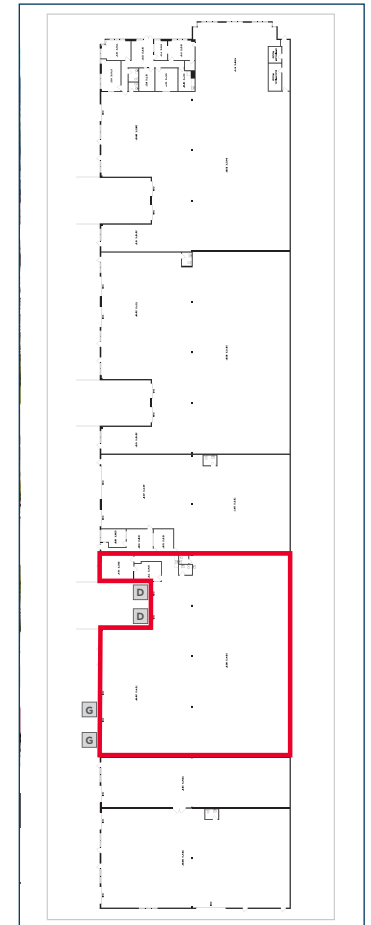
Allows for a wide range of light industrial uses such as manufacturing, warehousing, distribution and storage uses.

### BASIC LEASE RATE

Please consult listing agents

### ADDITIONAL RENT (2026)

Estimated at \$6.05 PSF, per annum & 5% management fee (on basic rent), plus GST



UNIT	WAREHOUSE AREA	OFFICE AREA	TOTAL AREA	LOADING DOORS	COMMENTS
111 - 114	12,567 SF	553	13,120 SF	2 Grade & 2 Dock	Available immediately

### FOR MORE INFORMATION, PLEASE CONTACT:

**Kevin Volz**  
Personal Real Estate Corporation  
Vice President, Industrial  
+1 604 640 5851  
kevin.volz@cushwake.com

**Jot Mattu**  
Senior Associate, Industrial  
+1 604 639 9352  
jot.mattu@cushwake.com

**Rick Dhanda**  
Associate Vice President, Industrial  
+1 604 640 5816  
rick.dhanda@cushwake.com

**Andrew Green**  
Personal Real Estate Corporation  
Vice President, Industrial  
+1 604 640 5800  
andrew.green@cushwake.com

Suite 1200 - 700 W Georgia St.  
Vancouver, BC  
+1 604 683 3111  
[cushmanwakefield.com](http://cushmanwakefield.com)

©2025 Cushman & Wakefield ULC. All rights reserved. The information contained in this communication is strictly confidential. This information has been obtained from sources believed to be reliable but has not been verified. NO WARRANTY OR REPRESENTATION, EXPRESS OR IMPLIED, IS MADE AS TO THE CONDITION OF THE PROPERTY (OR PROPERTIES) REFERENCED HEREIN OR AS TO THE ACCURACY OR COMPLETENESS OF THE INFORMATION CONTAINED HEREIN, AND SAME IS SUBMITTED SUBJECT TO ERRORS, OMISSIONS, CHANGE OF PRICE, RENTAL OR OTHER CONDITIONS, WITHDRAWAL WITHOUT NOTICE, AND TO ANY SPECIAL LISTING CONDITIONS IMPOSED BY THE PROPERTY OWNER(S). ANY PROJECTIONS, OPINIONS OR ESTIMATES ARE SUBJECT TO UNCERTAINTY AND DO NOT SIGNIFY CURRENT OR FUTURE PROPERTY PERFORMANCE.