

FOR SALE AND LEASE

4000-4024 PRECISION DRIVE

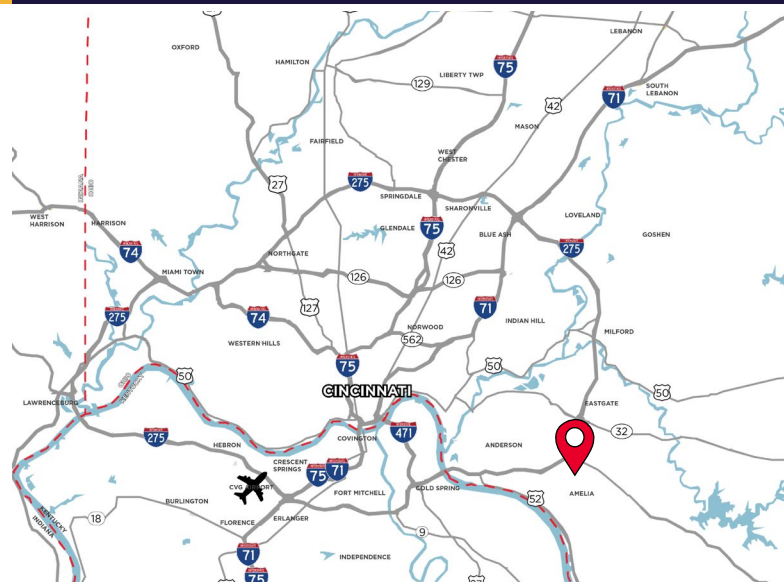
UNION TOWNSHIP, OH 45245



LEASE RATE: NEGOTIABLE + \$1.60/SF

SALE PRICE: UNDISCLOSED

- 75,000 SF Available
- Smallest Division 50,000 SF - 75,000 SF
- 556 SF Office
- 27' Clear Height
- (15) Dock Doors; Cross-Dock
- (1) 12'x14' Drive-in Door
- LED Lighting



For more information, contact:

SEATTLE STEIN
+1 513 763 3027
seattle.stein@cushwake.com

JEFF BENDER, SIOR, CCIM
+1 513 763 3046
jeff.bender@cushwake.com



201 E. Fourth Street, Suite 1800
Cincinnati, OH 45202
P: +1 513 421 4884
cushmanwakefield.com

FOR SALE AND LEASE

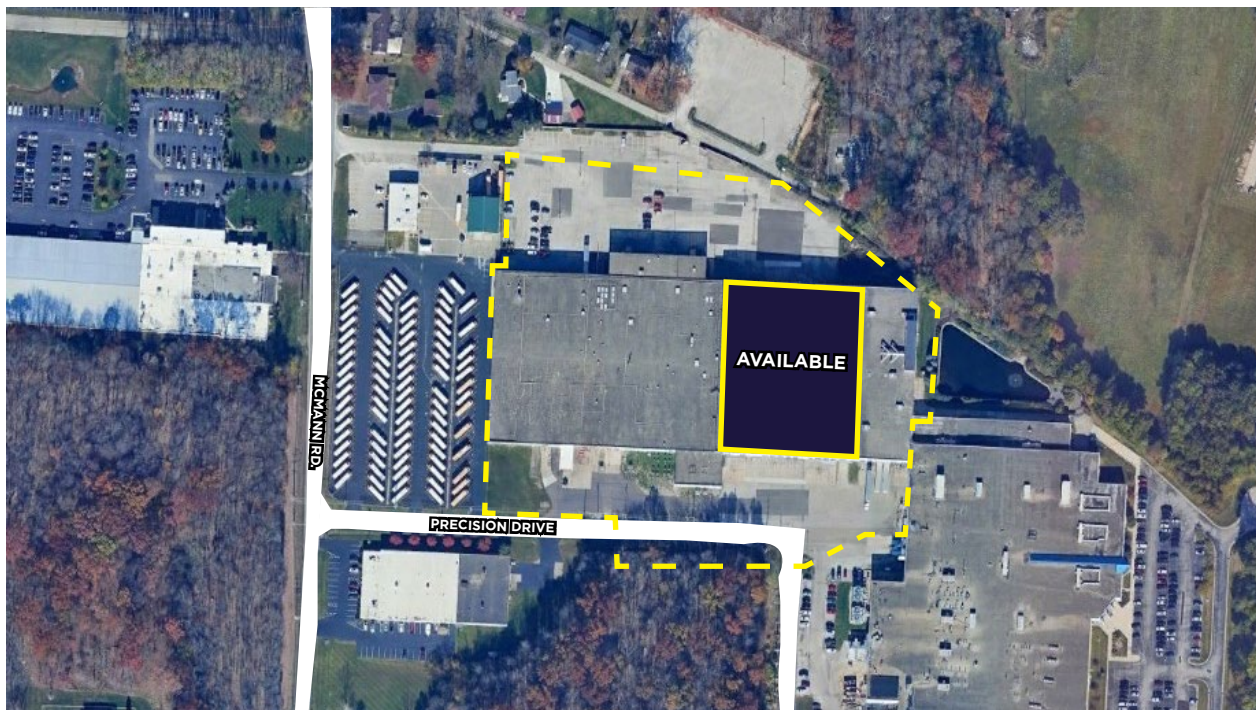
4000-4024 PRECISION DRIVE

UNION TOWNSHIP, OH 45245



JURISDICTION	Union Township	DOCK DOORS	(15) Dock Doors; Cross-Dock
AVAILABLE SIZE	75,000 SF	DRIVE-IN DOORS	(1) 12'x14' Drive-in Door
OFFICE SIZE	556 SF	HVAC	Natural Gas
YEAR BUILT	1985, 1995	UTILITIES	
ACRES	10 Acres	ELECTRIC	www.owenelectric.com
ZONING	M-1 Union Township	GAS	www.duke-energy.com
CLEAR HEIGHT	27'	WATER	www.sd1.org
PARKING	30+	SEWER	www.sd1.org
FIRE SUPPRESSION	Wet System	TELEPHONE	www.altafiber.com
LIGHTING	LED	DATA	www.spectrum.com
		OPEX	\$1.60/SF

AERIAL



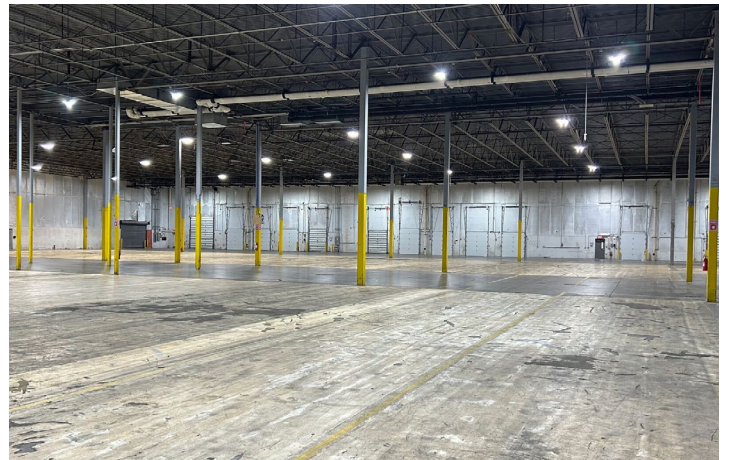
FOR SALE AND LEASE

4000-4024 PRECISION DRIVE

UNION TOWNSHIP, OH 45245



PHOTOS



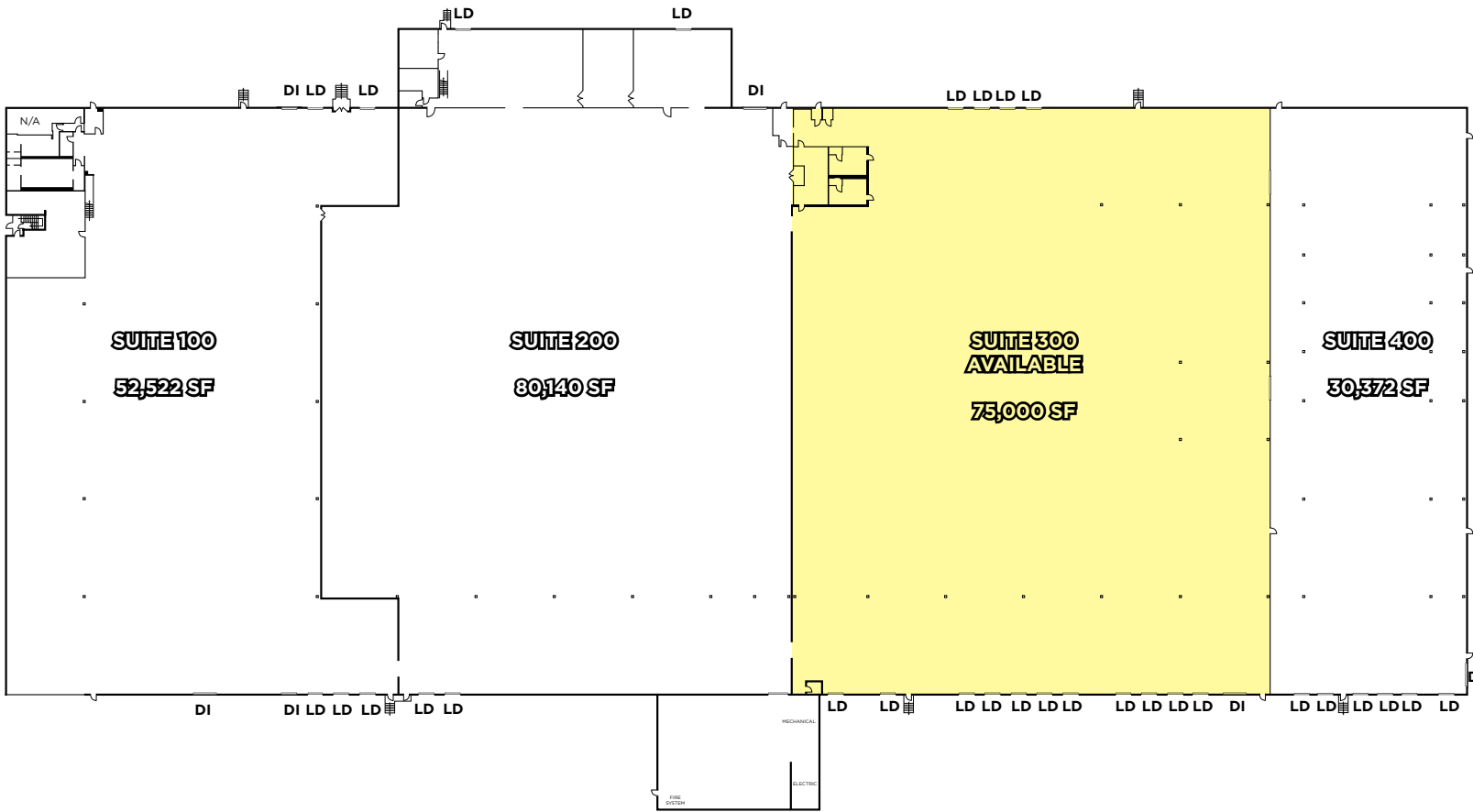
FOR SALE AND LEASE

4000-4024 PRECISION DRIVE

UNION TOWNSHIP, OH 45245



FLOOR PLAN



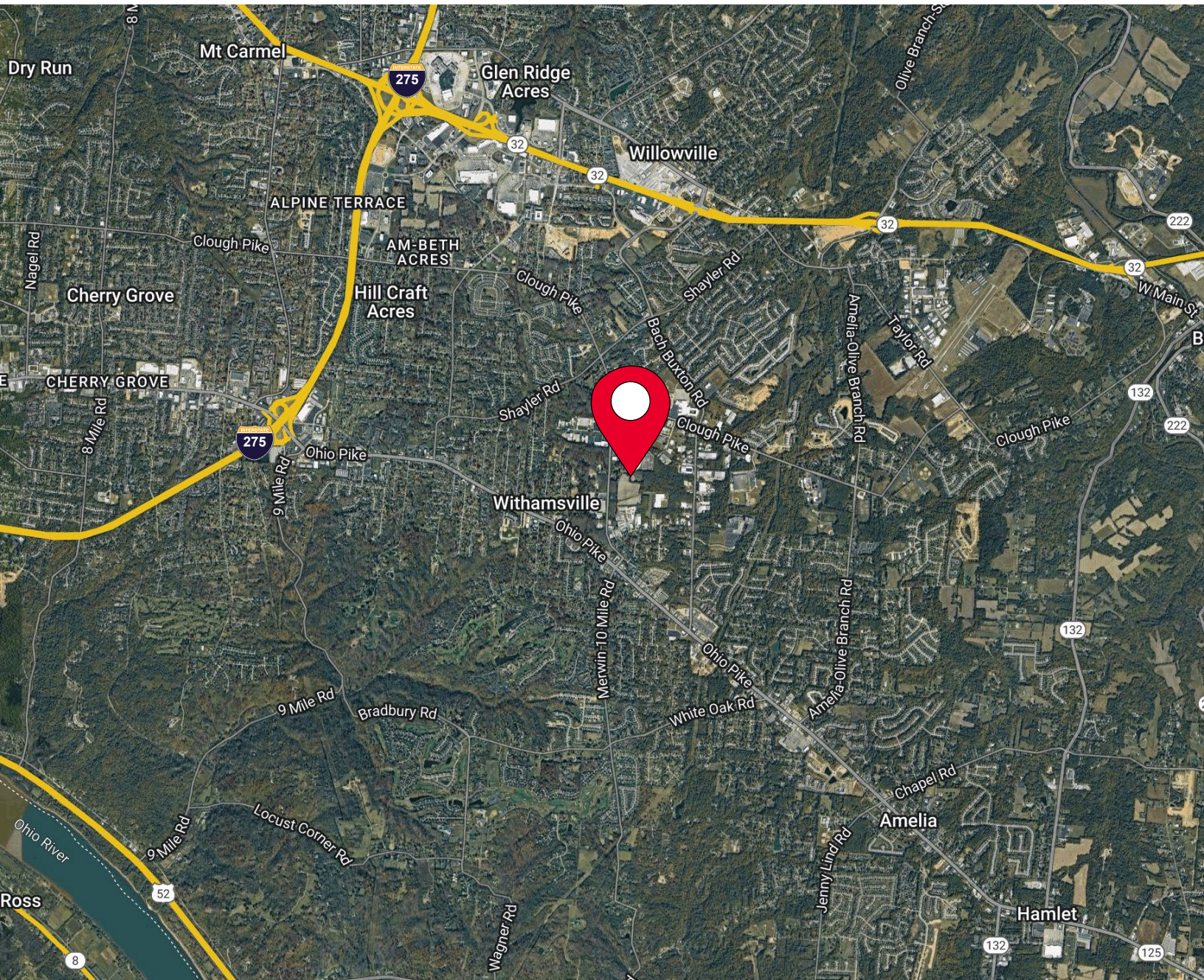
FOR SALE AND LEASE

4000-4024 PRECISION DRIVE

UNION TOWNSHIP, OH 45245



AERIAL LOCATION



For more information, contact:

SEATTLE STEIN
+1 513 763 3027
seattle.stein@cushwake.com

JEFF BENDER, SIOR, CCIM
+1 513 763 3046
jeff.bender@cushwake.com



201 E. Fourth Street, Suite 1800
Cincinnati, OH 45202
P: +1 513 421 4884
cushmanwakefield.com