



**CUSHMAN &  
WAKEFIELD**

Commercial Kentucky

# BISIG IMPACT CENTRE 640 S. 4TH ST

FOR LEASE | 7,200 SF AVAILABLE



# BISIG IMPACT CENTRE



## PROPERTY HIGHLIGHTS

Full first floor available in recently renovated historic office building

Parking garages next door and across the street

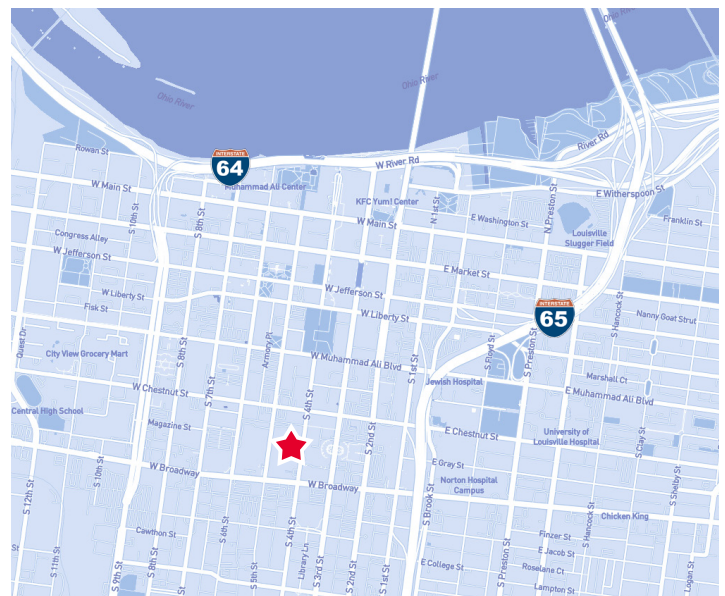
~50' of window space available for signage

Walking distance to 4th Street Live!, the Louisville Palace, Brown Hotel, restaurants, retail and professional services



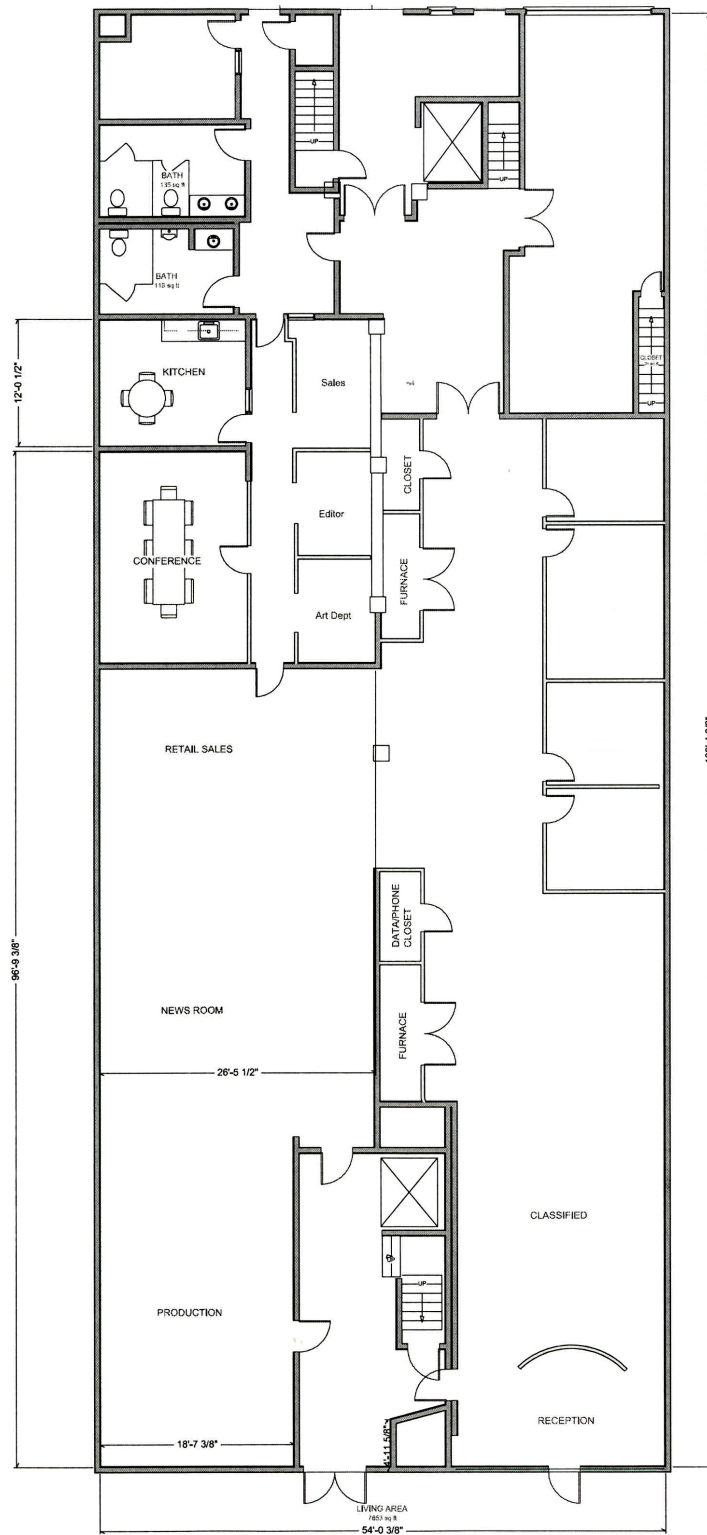
## PROPERTY DETAILS

Address:	640 S. 4th St Louisville, KY 40202
Suite:	100
Building Size:	32,002 sf
Space Available:	7,200 sf
Zoning:	C-3



# 1ST FLOOR PLAN

7,200 SF AVAILABLE





3. La Terraza
4. Metztli Modern Mexican
5. Safier Mediterranean Deli
6. Silician Pizza & Pasta
10. Spinellis
11. Brenden's Catch 23
14. Brazeiros Brazilian Steakhouse
15. Pizza Bar
16. PBR
17. Guy Fieri's Smokehouse
18. The Sports & Social Club
19. Howl at the Moon
20. Locos
22. The Fudgery
23. Gordon Biersch Brewery

## ATTRACTIONS

1. The Brown Theatre
7. Louisville Palace Theatre
8. Mercury Ballroom
33. Kentucky International Convention Center

2. The Brown Hotel
9. Hilton Garden Inn
12. The Steelbach Hilton
13. Embassy Suites
21. Omni Louisville
24. Marriott
29. Hyatt Regency



## CONTACT

E.P. SCHERER  
Senior Director  
+1 502 719 3234  
[epscherer@commercialkentucky.com](mailto:epscherer@commercialkentucky.com)

©2025 Cushman & Wakefield. All rights reserved. The material in this presentation has been prepared solely for information purposes, and is strictly confidential. Any disclosure, use, copying or circulation of this presentation (or the information contained within it) is strictly prohibited, unless you have obtained Cushman & Wakefield's prior written consent. The views expressed in this presentation are the views of the author and do not necessarily reflect the views of Cushman & Wakefield. Neither this presentation nor any part of it shall form the basis of, or be relied upon in connection with any offer, or act as an inducement to enter into any contract or commitment whatsoever. NO REPRESENTATION OR WARRANTY IS GIVEN, EXPRESS OR IMPLIED, AS TO THE ACCURACY OF THE INFORMATION CONTAINED WITHIN THIS PRESENTATION, AND CUSHMAN & WAKEFIELD IS UNDER NO OBLIGATION TO SUBSEQUENTLY CORRECT IT IN THE EVENT OF ERRORS.

Independently Owned & Operated / A Member of the Cushman & Wakefield Alliance



**CUSHMAN &  
WAKEFIELD**

Commercial Kentucky