

GANSEVOORT X WASHINGTON

Join Saint Laurent, Golden Goose, and The Whitney Museum
at the Crossroads of Fashion, Luxury, and Culture.

NEW STOREFRONT BEING INSTALLED AT 73 GANSEVOORT

821 WASHINGTON STREET

73 GANSEVOORT STREET

PREMIER CORNER & INLINE RETAIL OPPORTUNITIES IN THE MEATPACKING DISTRICT • NYC

EXCLUSIVE LEASING AGENT:
**CUSHMAN &
WAKEFIELD**

GANSEVOORT X WASHINGTON

PROMINENT RETAIL SPACES AVAILABLE ON ONE OF MEATPACKING'S HIGHEST FOOT-TRAFFIC INTERSECTIONS

73 GANSEVOORT (CORNER)

GROUND FLOOR 2,796 SF

LOWER LEVEL 602 SF

TOTAL 3,398 SF

821 WASHINGTON (INLINE)

GROUND FLOOR 2,384 SF

LOWER LEVEL 1,175 SF

TOTAL 3,559 SF

COMMENTS

- An iconic Meatpacking District corner, directly across from the new Saint Laurent and Golden Goose flagships and surrounded by premier global luxury and contemporary retailers
- Opportunity for ancillary F&B uses with outdoor seating
- Virtually column free, small format inline opportunity situated amongst high volume retailers
- Located on one of Manhattan's most highly trafficked intersection fronting both the Whitney Museum and the main entrance to the High Line

SAINT LAURENT



★ GOLDEN GOOSE



100K
PEDESTRIANS WEEKLY

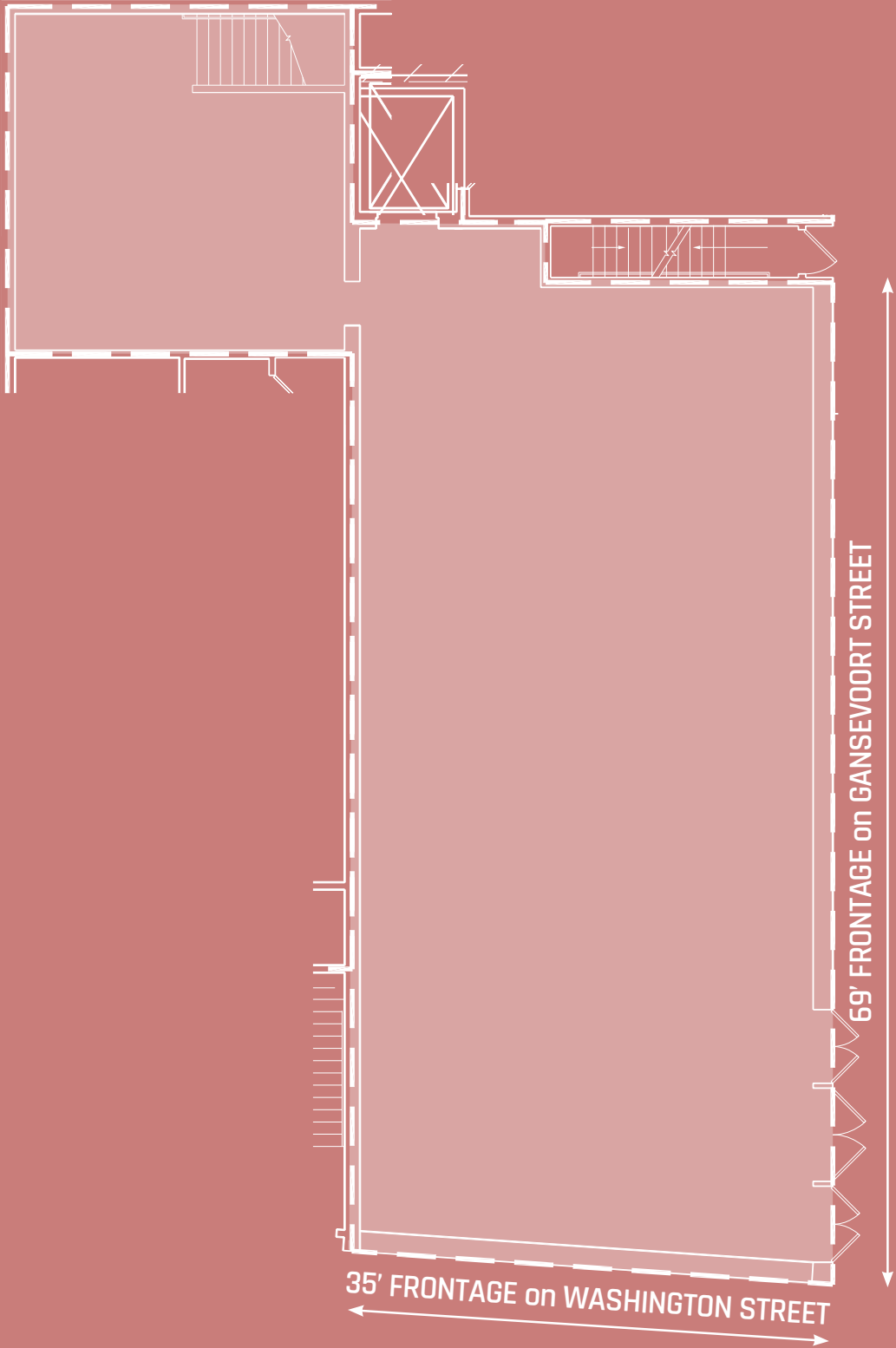


GANSEVOORT X WASHINGTON



LANDMARK APPROVED CONCEPTUAL STOREFRONT DESIGN

73 GANSEVOORT (CORNER)

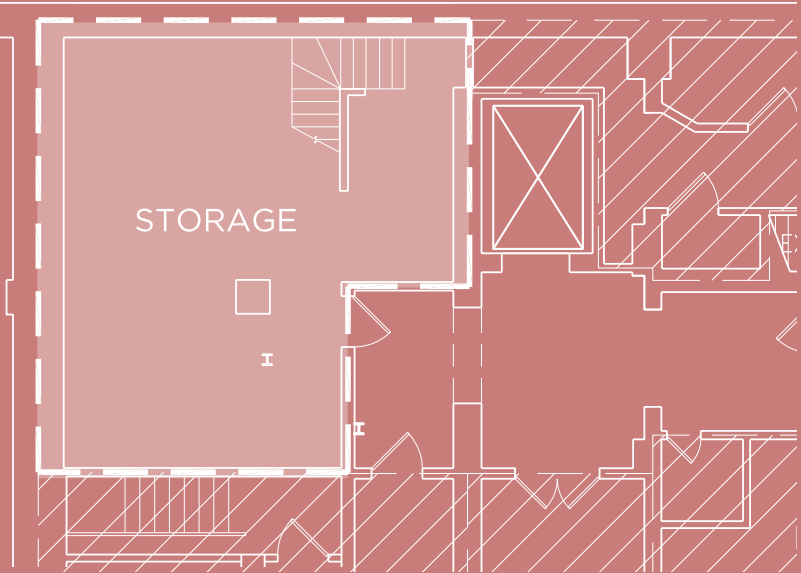


GROUND FLOOR 2,796 SF

GROUND FLOOR 2,796 SF
LOWER LEVEL 602 SF
TOTAL 3,398 SF

FRONTAGE
Gansevoort Street 69'
Washington Street 35'
TOTAL 104'

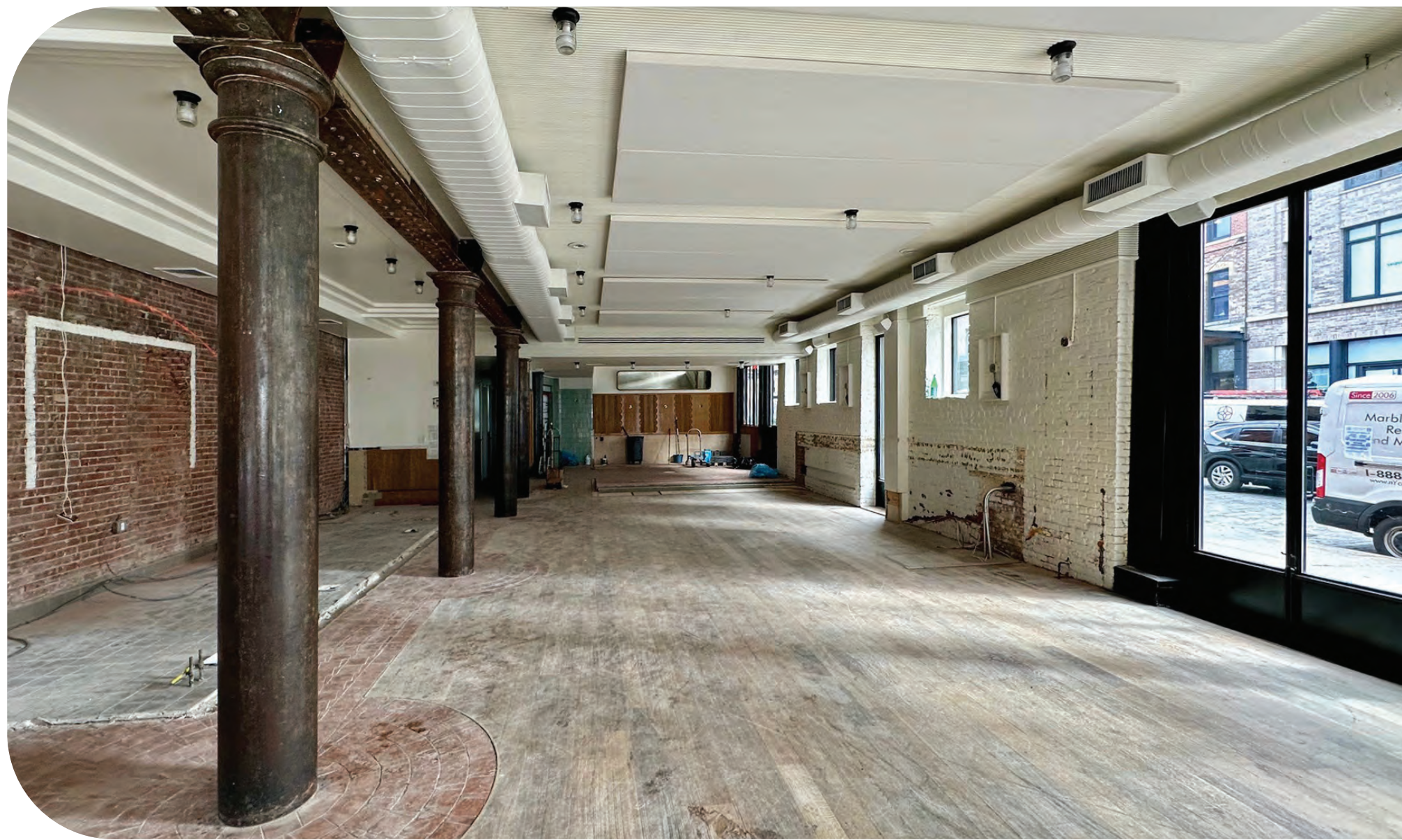
POSSESSION Immediate
ASKING RENT Upon Request



LOWER LEVEL 602 SF

GANSEVOORT X WASHINGTON

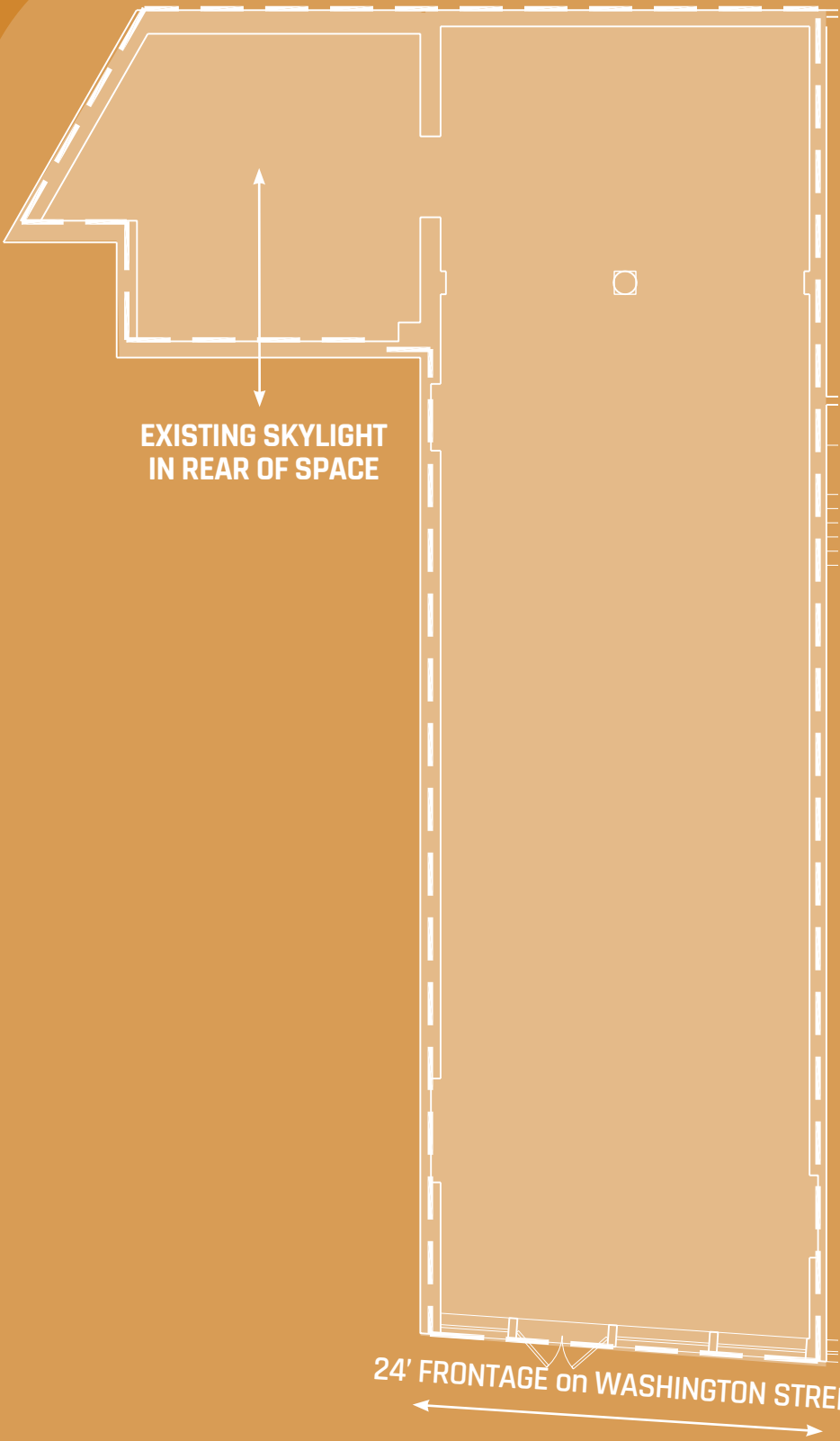
73 GANSEVOORT (CORNER) INTERIOR



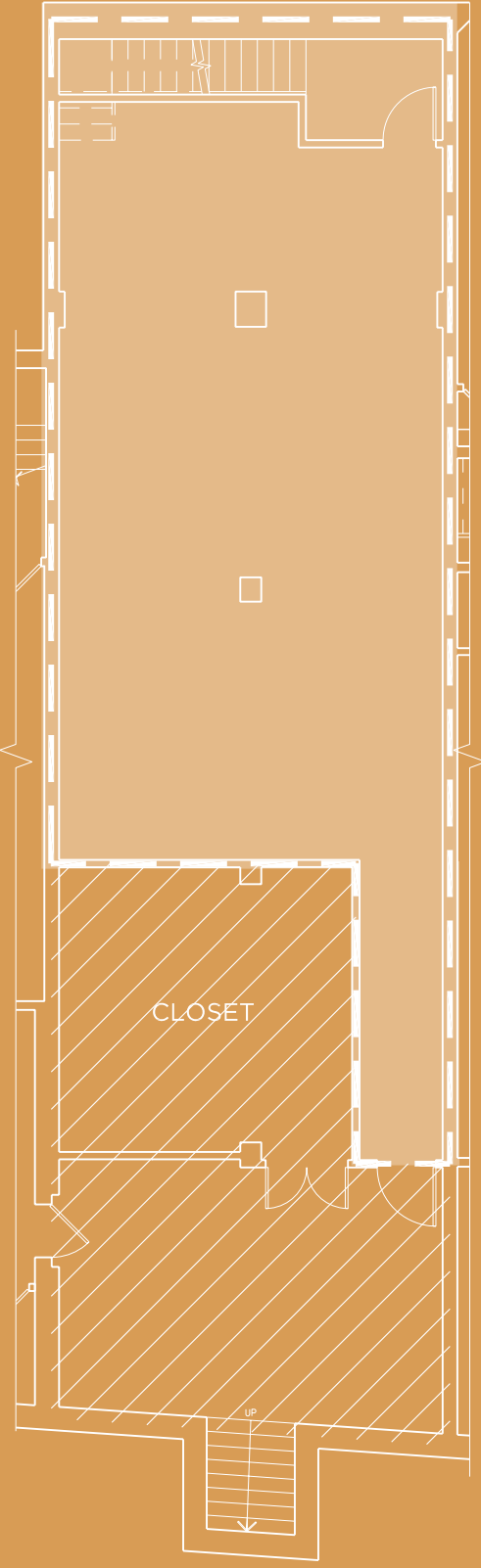
GANSEVOORT X WASHINGTON



821 WASHINGTON (INLINE)



GROUND FLOOR 2,384 SF



LOWER LEVEL 1,175 SF

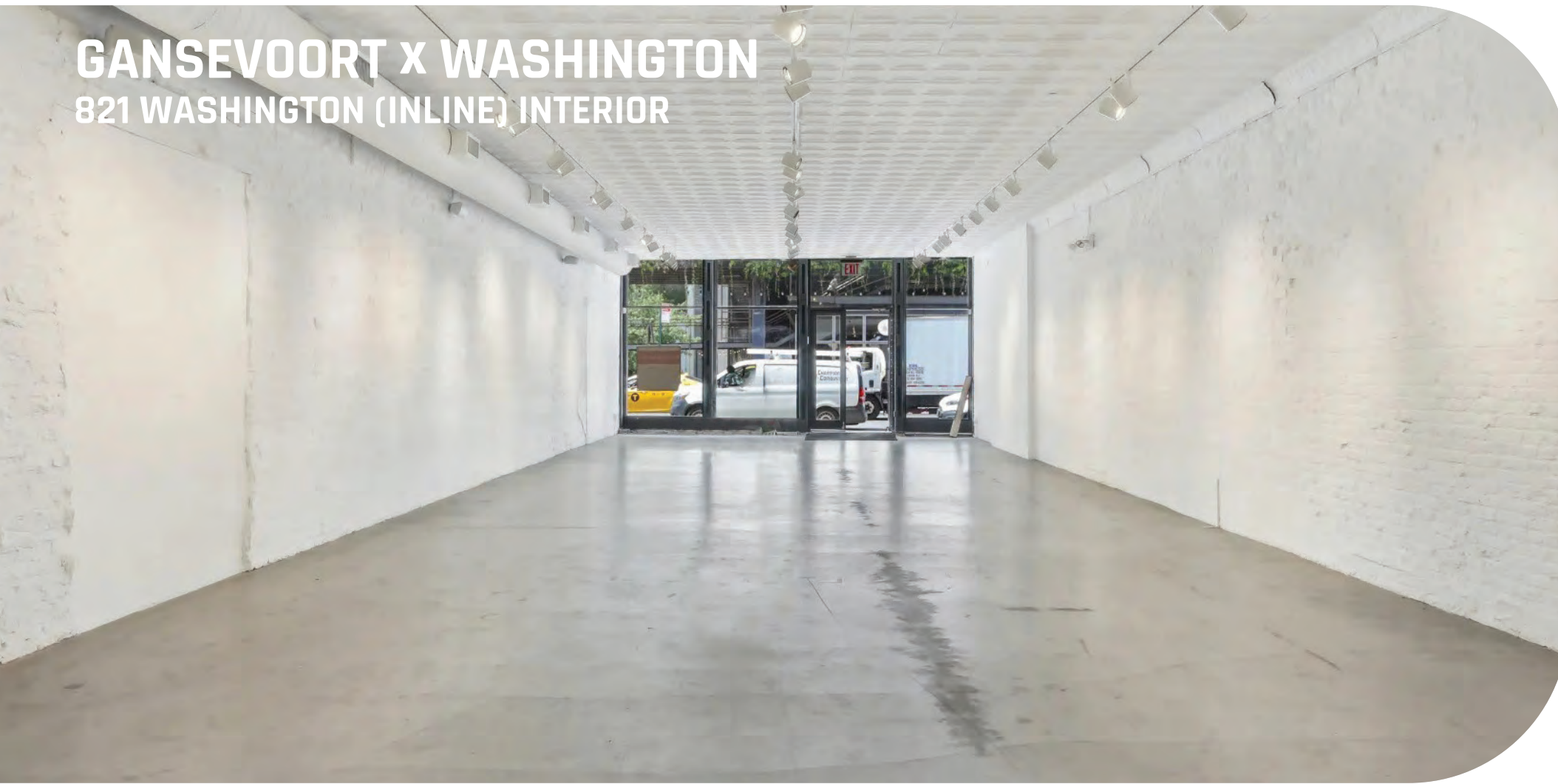
GROUND FLOOR 2,384 SF
LOWER LEVEL 1,175 SF
TOTAL 3,559 SF

FRONTAGE
Washington Street 24'

POSSESSION Arranged

ASKING RENT Upon Request

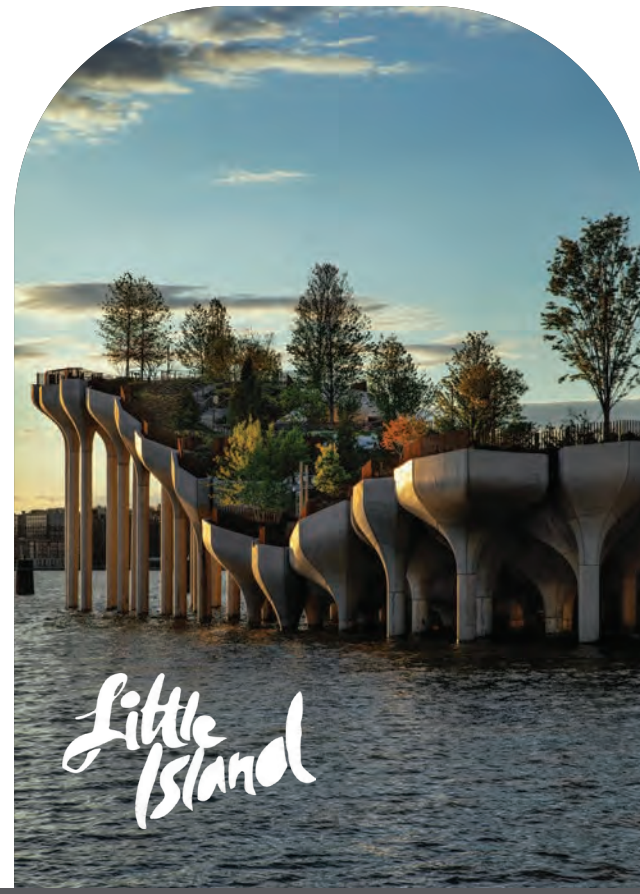
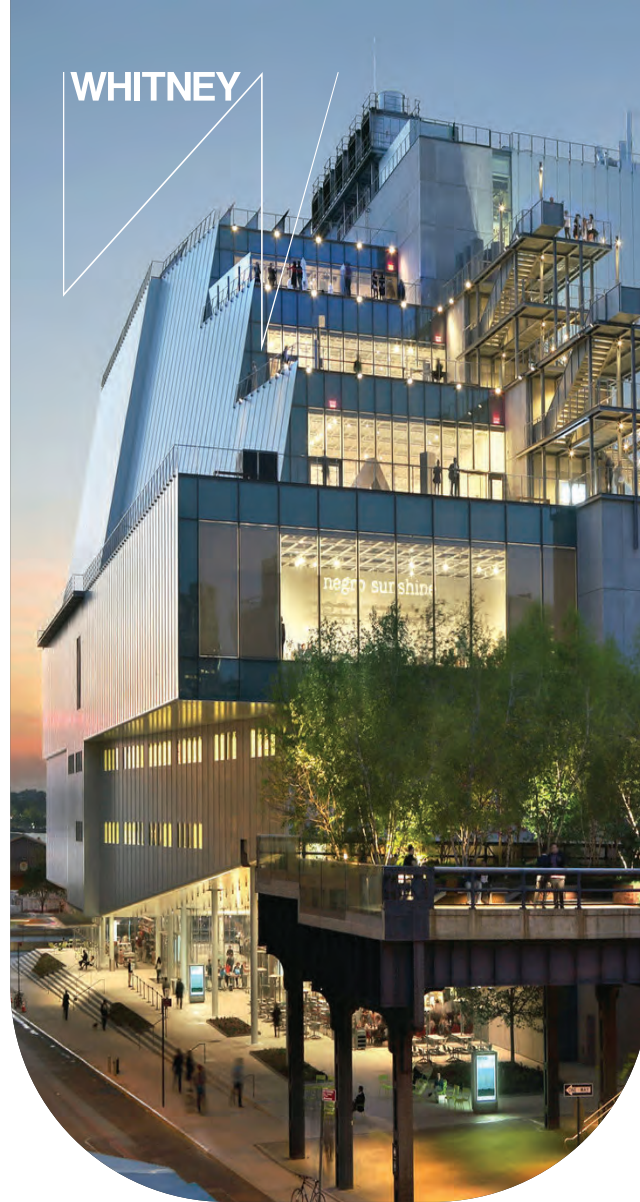
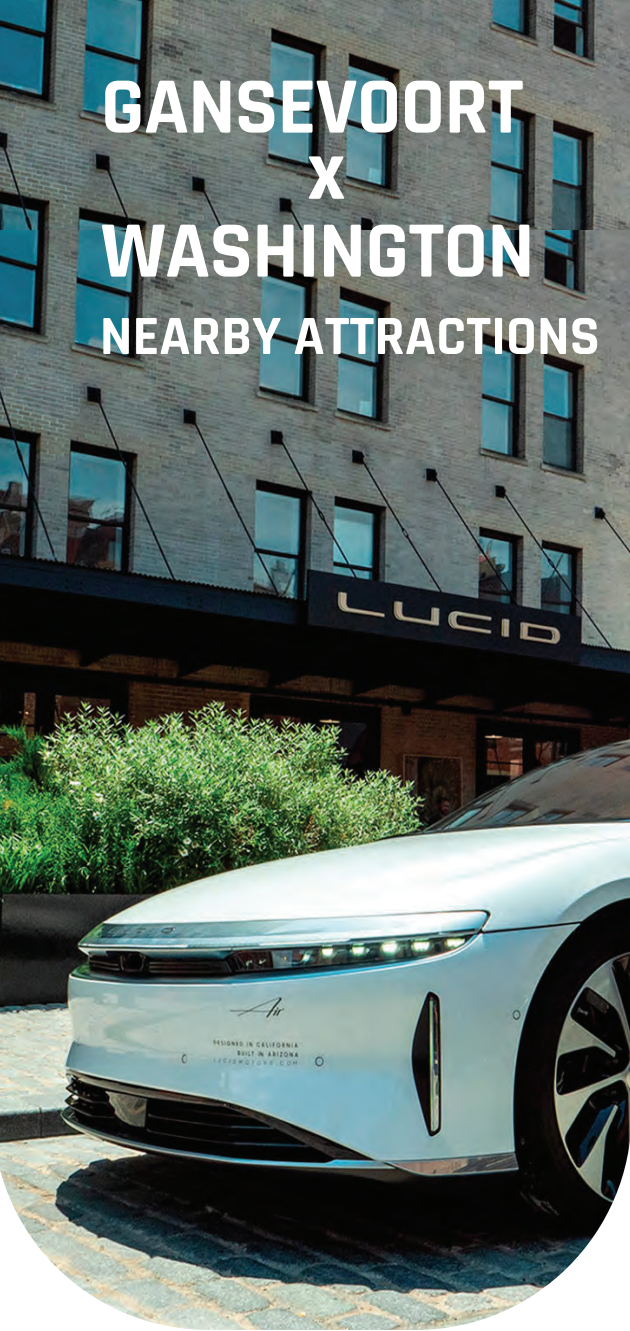
GANSEVOORT X WASHINGTON
821 WASHINGTON (INLINE) INTERIOR



*EXPECTED 2024 VISITORSHIP



GANSEVOORT
X
WASHINGTON
NEARBY ATTRACTIONS



GANSEVOORT **X** WASHINGTON

MICHAEL O'NEILL | 212.841.7909
michael.oneill@cushwake.com

JASON GREENSTONE | 212.841.7713
jason.greenstone@cushwake.com

TAYLOR REYNOLDS | 212.841.5920
taylor.reynolds@cushwake.com

LILLY CRAVER | 212.698.5616
lilly.craver@cushwake.com

CushmanWakefield.com

EXCLUSIVE LEASING AGENT:



©2025 Cushman & Wakefield. All rights reserved. The material in this presentation has been prepared solely for information purposes, and is strictly confidential. Any disclosure, use, copying or circulation of this presentation (or the information contained within it) is strictly prohibited, unless you have obtained Cushman & Wakefield's prior written consent. The views expressed in this presentation are the views of the author and do not necessarily reflect the views of Cushman & Wakefield. Neither this presentation nor any part of it shall form the basis of, or be relied upon in connection with any offer, or act as an inducement to enter into any contract or commitment whatsoever. NO REPRESENTATION OR WARRANTY IS GIVEN, EXPRESS OR IMPLIED, AS TO THE ACCURACY OF THE INFORMATION CONTAINED WITHIN THIS PRESENTATION, AND CUSHMAN & WAKEFIELD IS UNDER NO OBLIGATION TO SUBSEQUENTLY CORRECT IT IN THE EVENT OF ERRORS.