

FOR SUBLEASE | ±4,668 SF AVAILABLE

1201 PACIFIC AVENUE

TACOMA, WA

FLOOR 20 | SUITE 2025



**CUSHMAN &
WAKEFIELD**

1201 PACIFIC AVENUE TACOMA, WA



PROPERTY HIGHLIGHTS

- Tacoma's largest office tower, located in CBD, with immediate access to I-705 & I-5.
- Newly renovated building, featuring a new plaza/courtyard, and outdoor seating.
- Building offers conference rooms, locker room facilities, ample covered parking, and more.
- Beautiful panoramic views of Commencement Bay, Mt. Rainier, Olympics, and Cascade Mountains.

AVAILABLE STARTING: IMMEDIATELY



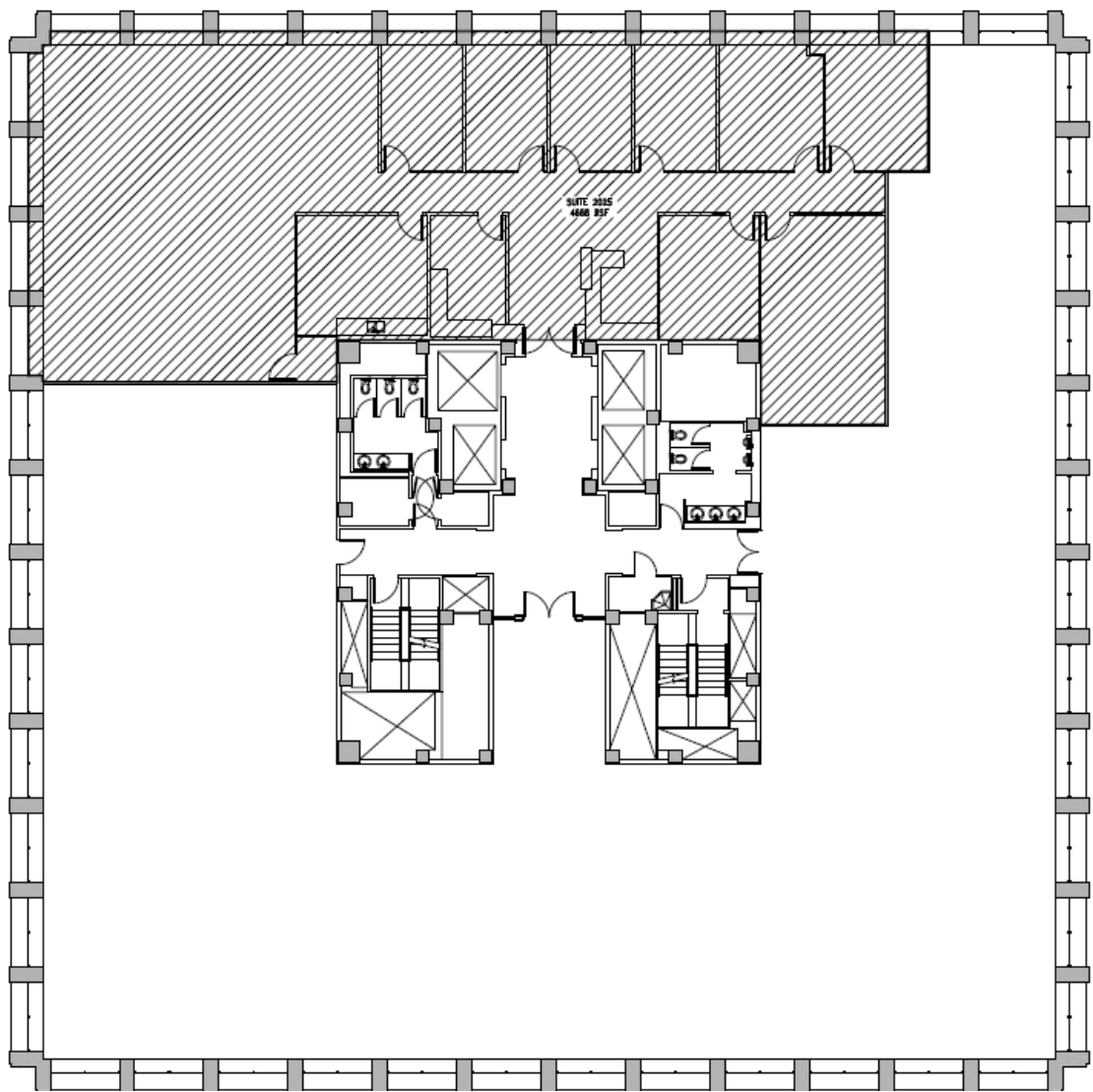
**1201 PACIFIC AVENUE
TACOMA, WA**

 **PROPERTY IMAGES**



1201 PACIFIC AVENUE
TACOMA, WA

 FLOOR PLAN



FOR MORE INFORMATION, CONTACT:

Kevin Smith
Associate Director
+1 206 682 0666
kevin.smith@cushwake.com

2101 L Street, N.W.
Suite 500
Washington, DC 20037
+1 202 463 2100
cushmanwakefield.com



©2024 Cushman & Wakefield. All rights reserved. The information contained in this communication is strictly confidential. This information has been obtained from sources believed to be reliable but has not been verified. NO WARRANTY OR REPRESENTATION, EXPRESS OR IMPLIED, IS MADE AS TO THE CONDITION OF THE PROPERTY (OR PROPERTIES) REFERENCED HEREIN OR AS TO THE ACCURACY OR COMPLETENESS OF THE INFORMATION CONTAINED HEREIN, AND SAME IS SUBMITTED SUBJECT TO ERRORS, OMISSIONS, CHANGE OF PRICE, RENTAL OR OTHER CONDITIONS, WITHDRAWAL WITHOUT NOTICE, AND TO ANY SPECIAL LISTING CONDITIONS IMPOSED BY THE PROPERTY OWNER(S). ANY PROJECTIONS, OPINIONS OR ESTIMATES ARE SUBJECT TO UNCERTAINTY AND DO NOT SIGNIFY CURRENT OR FUTURE PROPERTY PERFORMANCE.

