

146

YONGE ST

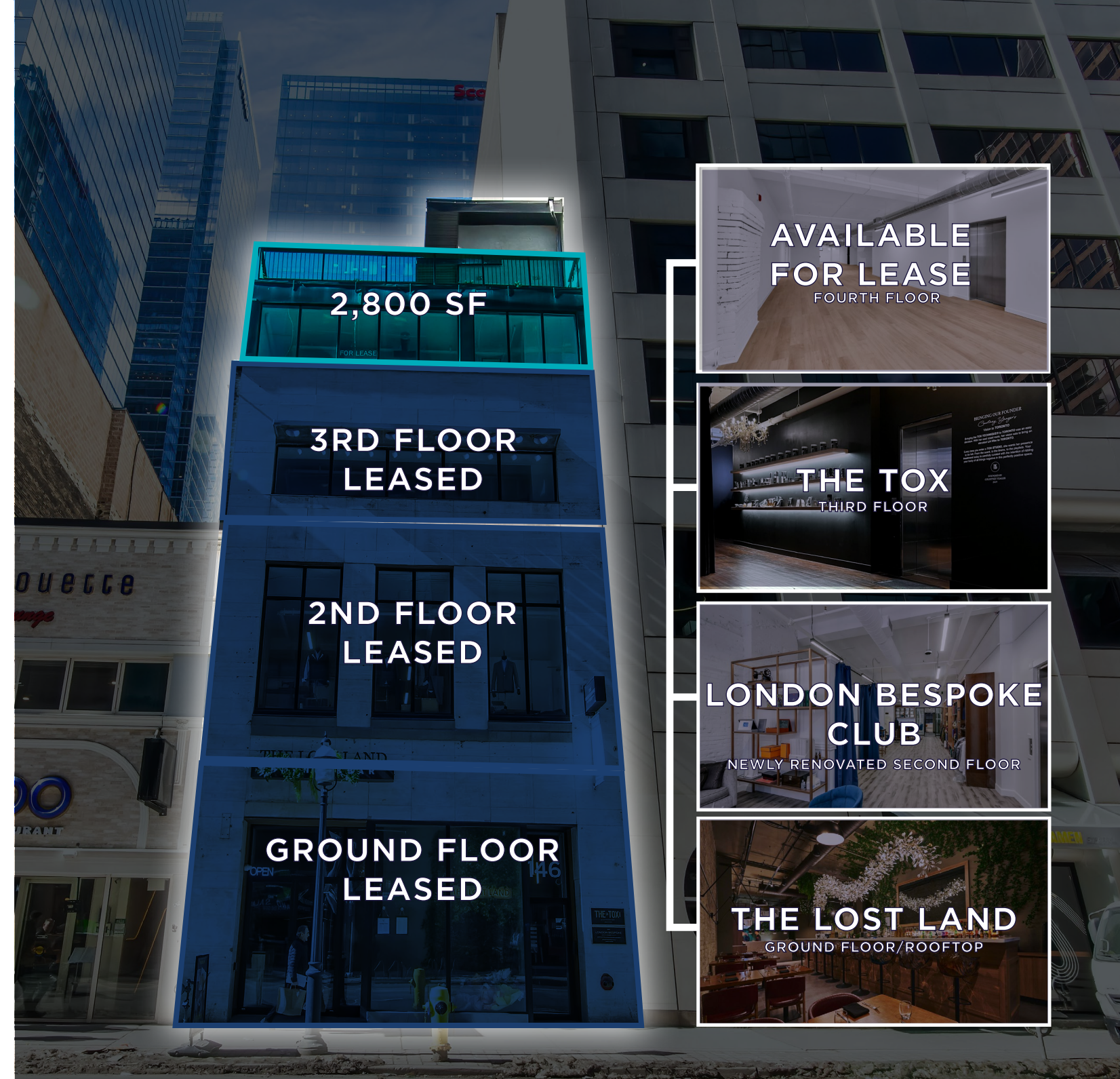
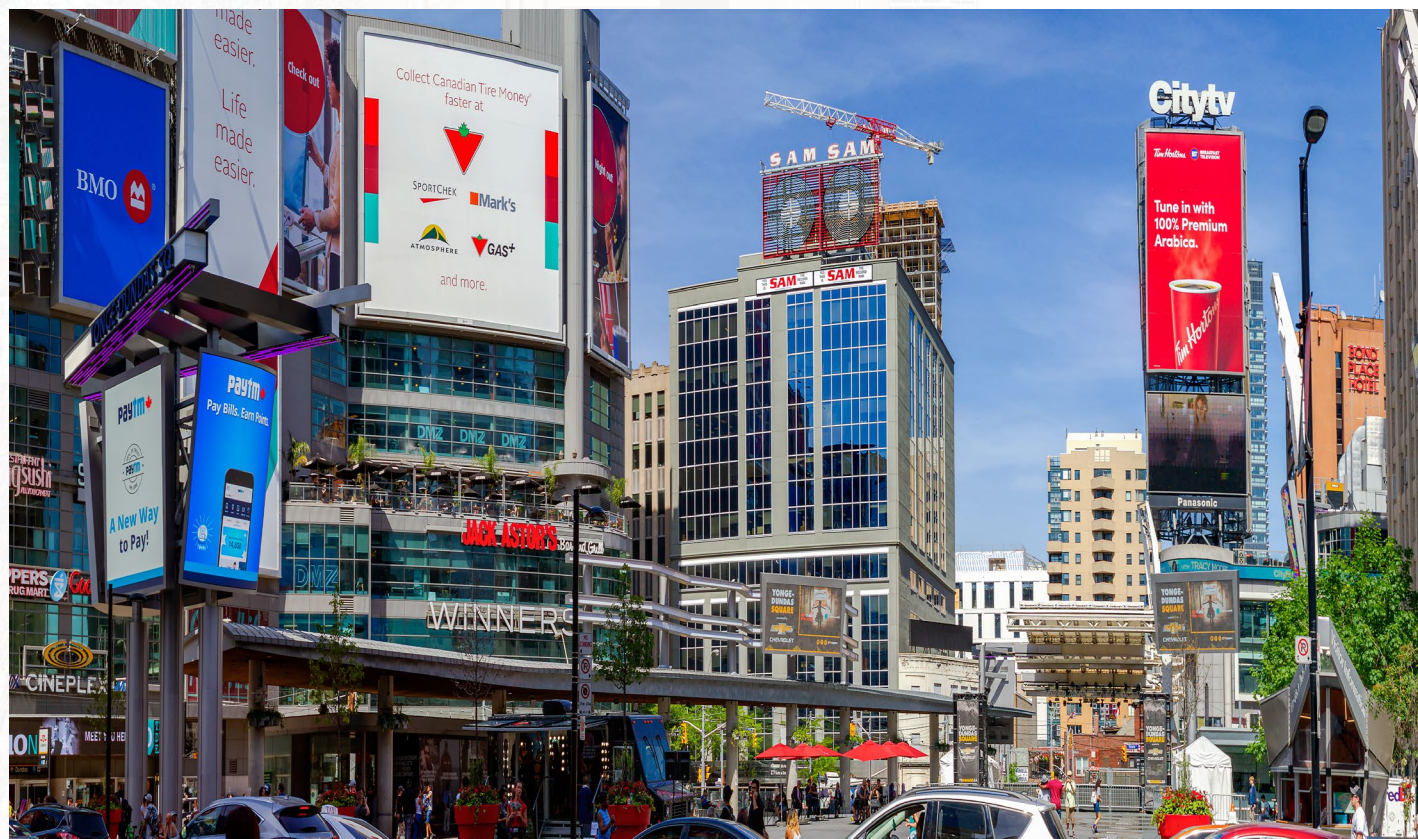
AVAILABLE FOR LEASE
SUITE 400 | 2,800 SF

NEWLY
RENOVATED



146 YONGE STREET

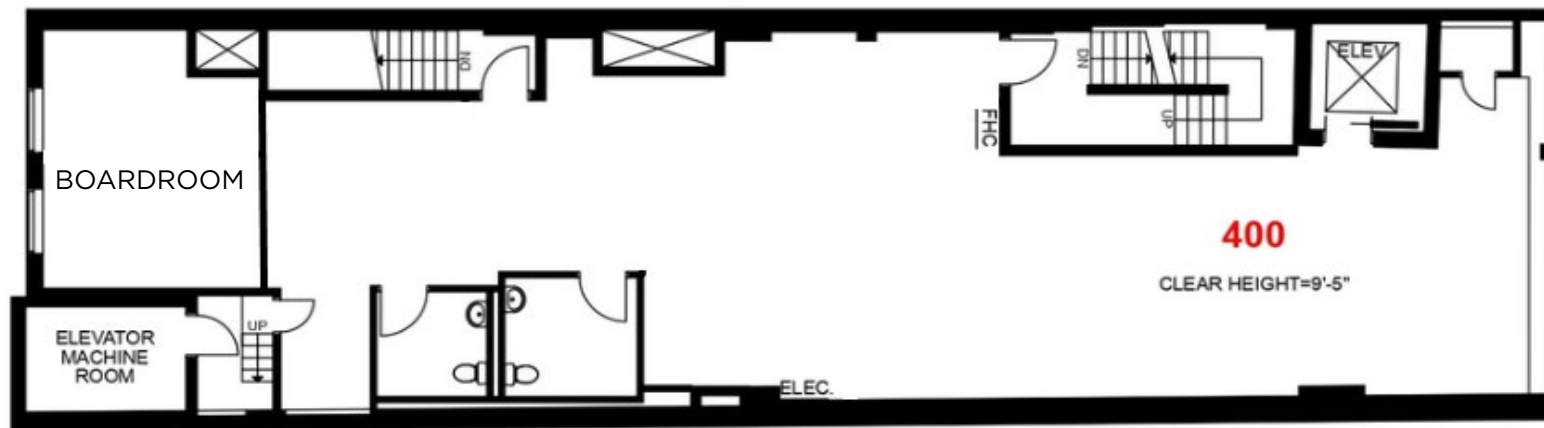
Welcome to 146 Yonge Street, a stunning character space featuring exposed brick walls, soaring 10' - 12' ceilings, and an open, column-free layout. A private elevator opens directly to each floor, with all-new building systems throughout. Located in the heart of Toronto's Financial Core, this prime Yonge Street address offers approximately 30 feet of frontage between Richmond and Temperance Streets. Just steps from the Eaton Centre and TTC.



TOP TIER TENANTS

2,800 RSF AVAILABLE

Suite 400



PROPERTY DETAILS

Additional Rent: \$21.00 (2025 Est.)

Exclusive of in-suite utilities and janitorial

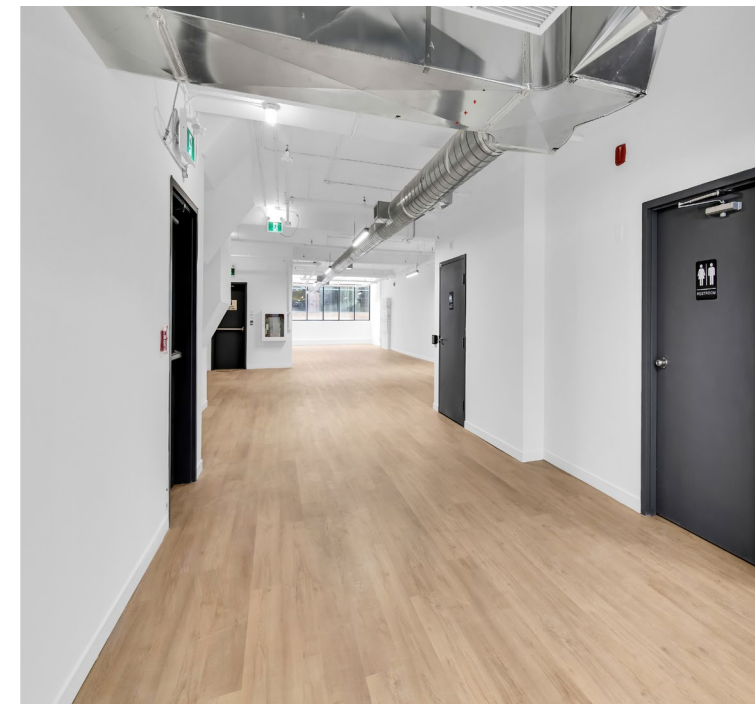
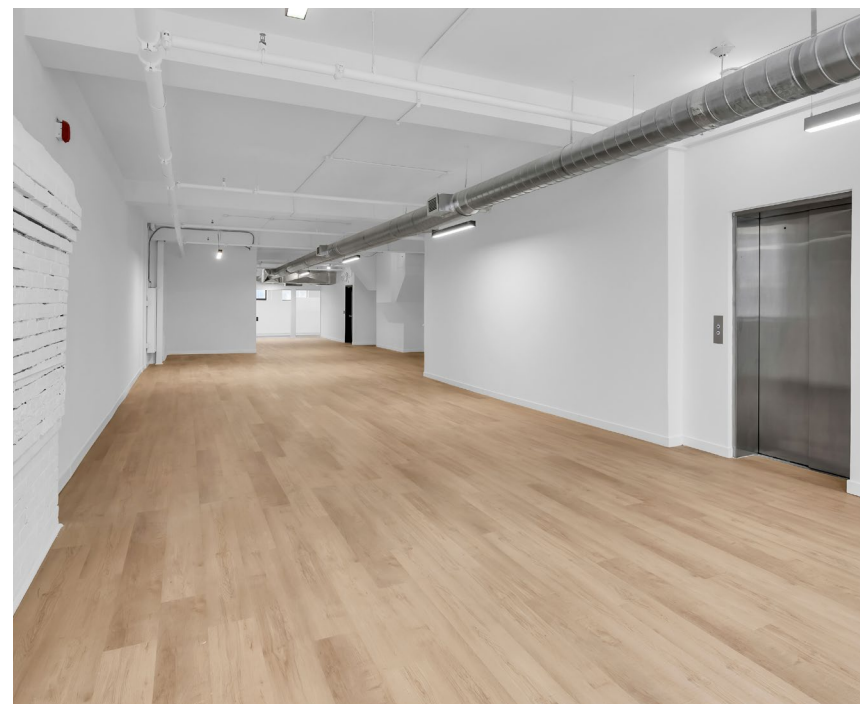
PROPERTY HIGHLIGHTS

Character space with exposed brick walls

10' - 12' clear ceiling height

Elevator opens up to private floor

All new building systems throughout





MICHAEL SCACE

Vice Chair
416 359 2456
michael.scace@cushwake.com

ALAN RAWN

Senior Vice President
416 359 2440
alan.rawn@cushwake.com

LAUREN LUCHINI

Associate Vice President
416 455 5824
lauren.luchini@cushwake.com

BRENDAN SHEA

Senior Associate
905 501 6426
brendan.shea@cushwake.com

