



FOR LEASE

18912
LAKE
DRIVE
EAST

Chanhassen, MN 55317

DELL
FIVE E





PROPERTY HIGHLIGHTS

- Owned by Nicola Wealth
- 464,204 total SF in 9 buildings
- Easy access to Hwy 5 and Highway 212
- Many area amenities available
- Excellent Hwy 5 visibility

Dell Five E : FEATURES

ADDRESS	18912-18924 Lake Dr. E, Chanhassen
BUILDING TOTAL SF	12,869 SF
CLEAR HEIGHT	18'
YEAR BUILT	1998
LEASE RATES	Negotiable
2025 ESTIMATED TAX & CAM	\$3.40 PSF Tax \$0.60 PSF Ins \$6.69 PSF Op Ex \$10.69 PSF Total
POWER	480/277 volt, 3000amp, 3-phase
COLUMN SPACING	30' x 40'

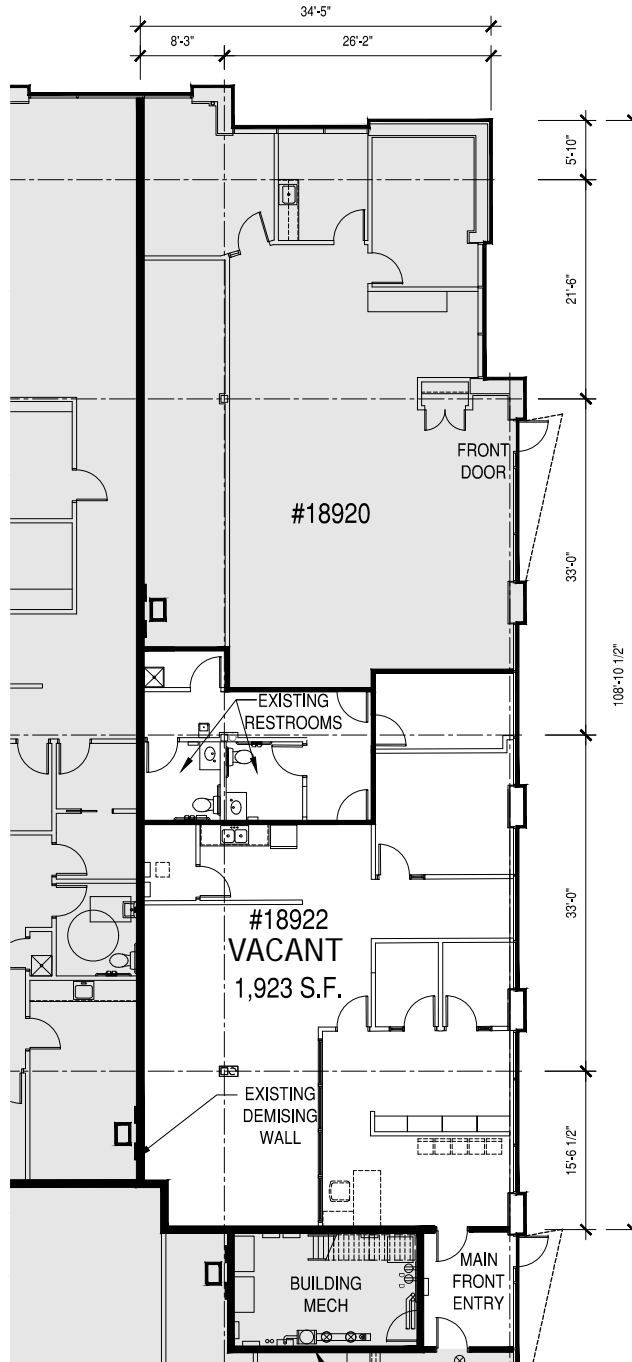
VACANCIES

SUITE	18922
AVAILABILITY	1,923 SF Office
PARKING	10 Stalls

SUITE 18922

1,923 SF OFFICE

1,923 SF TOTAL



AERIAL MAP



SITE MAP



PHOTOS





FOR MORE INFORMATION, PLEASE CONTACT:

KRIS SMELTZER

Executive Managing Director
+1 952 837 8575
kris.smeltzer@cushwake.com

HUDSON BROTHEN

Executive Director
+1 952 893 8261
hudson.brothen@cushwake.com

CUSHMAN & WAKEFIELD

3500 American Boulevard W, Suite 200
Minneapolis, MN 55431
cushmanwakefield.com

