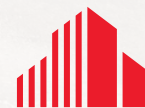


A photograph of a modern industrial building with a dark blue corrugated metal upper section and a light beige lower section. The building has large windows and a flat roof. The ground is covered in snow, and the sky is blue with some clouds.

INDUSTRIAL FOR LEASE

**1145-1149 BELLAMY
ROAD NORTH**

TORONTO, ON



**CUSHMAN &
WAKEFIELD**

1145-1149 BELLAMY ROAD NORTH TORONTO, ON

DETAILS

1145 BELLAMY ROAD NORTH

Unit 5-6	6,093 SF
Unit 15	2,036 SF

1147 BELLAMY ROAD NORTH

Unit 1	3,854 SF
--------	----------

1149 BELLAMY ROAD NORTH

Unit 9	2,544 SF
Unit 14-15	5,959 SF
Unit 16	3,270 SF
Unit 20-21	6,714 SF

NET RENT \$17.75 PSF

ADDITIONAL RENT \$6.72 PSF (est. 2025)

OCCUPANCY Immediate

PROPERTY FEATURES



Industrial unit in prime location



Quick drive to Scarborough Town Centre



Ample surface parking



Green outdoor area in the middle



Easy access to HWY 401 and transit



1145-1149 BELLAMY ROAD NORTH

TORONTO, ON

BUILDING SPECS

YEAR BUILT

1969

ZONING

Industrial E0.7* 165

CLEAR HEIGHT

14'

TRUCK LEVEL DOORS

1145 BELLAMY ROAD NORTH			1149 BELLAMY ROAD NORTH		
Unit 5-6	2	TL	Unit 9	1	TL
Unit 15	1	TL	Unit 16	1	TL
1147 BELLAMY ROAD NORTH			Unit 14-15	2	TL
Unit 1	1	TL	Unit 20-21	2	TL

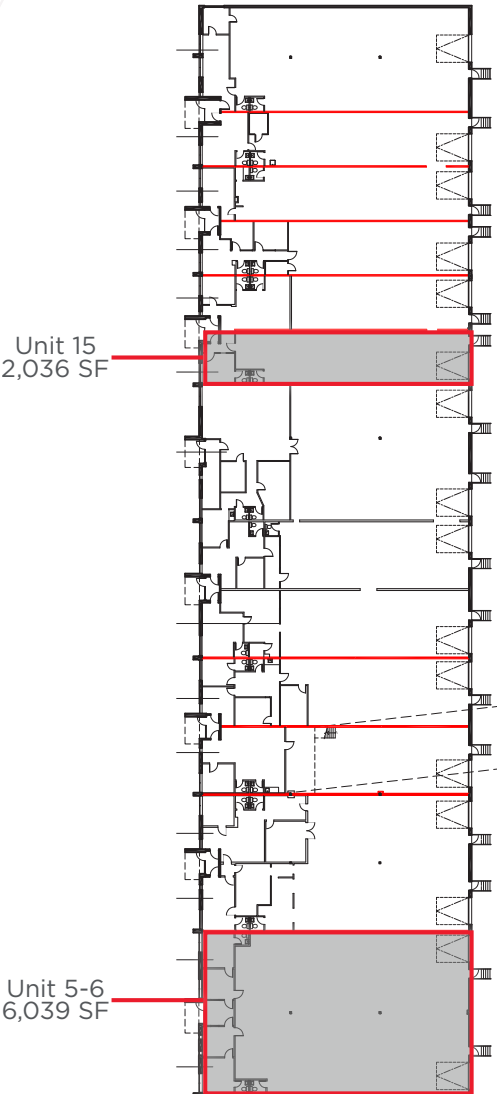


1145-1149 BELLAMY ROAD NORTH

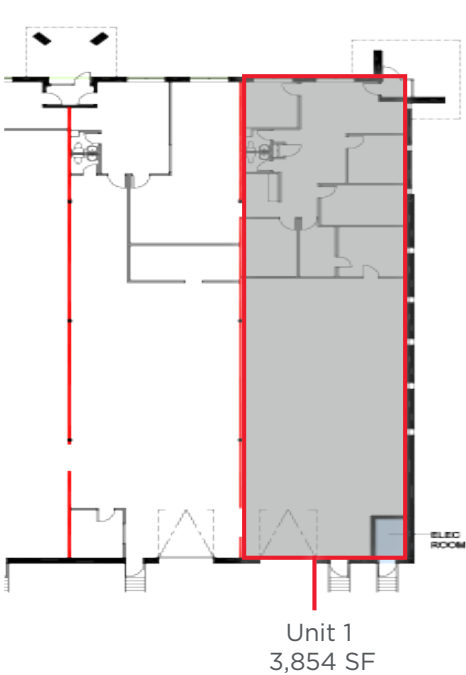
TORONTO, ON

FLOOR PLAN

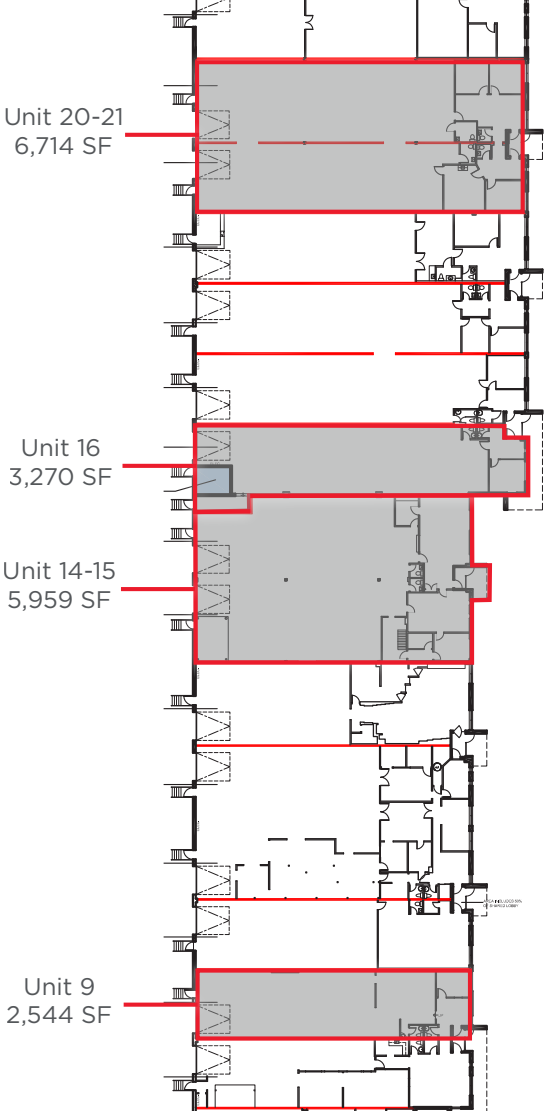
1145 BELLAMY RD N



1147 BELLAMY RD N



1149 BELLAMY RD N



AMENITIES MAP

Total Households
106,868



FOR MORE INFORMATION, CONTACT:

BRANDON GARRETT*

Senior Vice President

+1 905 501 6440

brandon.garrett@cushwake.com

DAVID STEVENS*

Vice President

+1 416 756 5420

david.stevens@cushwake.com

©2025 Cushman & Wakefield. All rights reserved. The information contained in this communication is strictly confidential. This information has been obtained from sources believed to be reliable but has not been verified. NO WARRANTY OR REPRESENTATION, EXPRESS OR IMPLIED, IS MADE AS TO THE CONDITION OF THE PROPERTY (OR PROPERTIES) REFERENCED HEREIN OR AS TO THE ACCURACY OR COMPLETENESS OF THE INFORMATION CONTAINED HEREIN, AND SAME IS SUBMITTED SUBJECT TO ERRORS, OMISSIONS, CHANGE OF PRICE, RENTAL OR OTHER CONDITIONS, WITHDRAWAL WITHOUT NOTICE, AND TO ANY SPECIAL LISTING CONDITIONS IMPOSED BY THE PROPERTY OWNER(S). ANY PROJECTIONS, OPINIONS OR ESTIMATES ARE SUBJECT TO UNCERTAINTY AND DO NOT SIGNIFY CURRENT OR FUTURE PROPERTY PERFORMANCE. *SALES REPRESENTATIVE

