



ENERGY STAR
Certified Building

855
M STREET

**THE TOWER AT
CONVENTION CENTER
COURT**

For Lease
±1,069 SF –
±21,509 SF

TONY CORTOPASSI
Managing Director
+1 559 433 3549
License# 01413706
tony.cortopassi@cushwake.com



Cushman & Wakefield Copyright 2023. No warranty or representation, express or implied, is made to the accuracy or completeness of the information contained herein, and same is submitted subject to errors, omissions, change of price, rental or other conditions, withdrawal without notice, and to any special listing conditions imposed by the property owner(s). As applicable, we make no representation as to the condition of the property (or properties) in question.

// PROPERTY FEATURES



GREAT DOWNTOWN BUSINESS DISTRICT LOCATION (walking distance)

- Restaurants
- Banking
- Government Services



AVAILABLE SPACES

- $\pm 1,069$ SF – 1st FLOOR RETAIL SPACE
- $\pm 21,509$ SF – 2ND FLOOR OFFICE
- $\pm 9,266$ SF – 10th FLR – SUITE 1010
- $\pm 5,745$ SF – 11th FLR – SUITE 1110



EASY HWY ACCESS TO 41, 168, 99 & 180



LEASE RATE: INQUIRE WITH BROKER

- Tenant Improvements available



**THE TOWER AT CONVENTION
CENTER COURT**
855 M Street, Fresno, California

// PROPERTY FEATURES



ON SITE PROPERTY MANAGEMENT



ON SITE 9 STORY PARKING STRUCTURE



ON SITE RESTAURANTS & BANKING



ON SITE SECURITY GUARD



LOADING DOORS TO SERVICE BLDG.



ADA ACCESSIBILITY WITH GENERATOR
BACKUP FOR BUILDING LIFE SAFETY &
COMMON AREAS



// **THE TOWER AT CONVENTION
CENTER COURT**
855 M Street, Fresno, California



// BUILDING INFORMATION

The Tower at Convention Center Court is the premium Class “A” office building in the Fresno Downtown Central Business District.

With many surrounding business support services and amenities, it is also located near government entities and has excellent access to all major Highways.

Property management and security is located on site and the building has its own parking garage.

BUILDING SIZE
274,700 SF

LOT SIZE
2.95 ACRES

PROPERTY TENANCY
MULTI-TENANT

BUILDING CLASS
A

PARKING RATIO
3.8/1,000 SF

PARKING GARAGE
ATTACHED TO BLDG

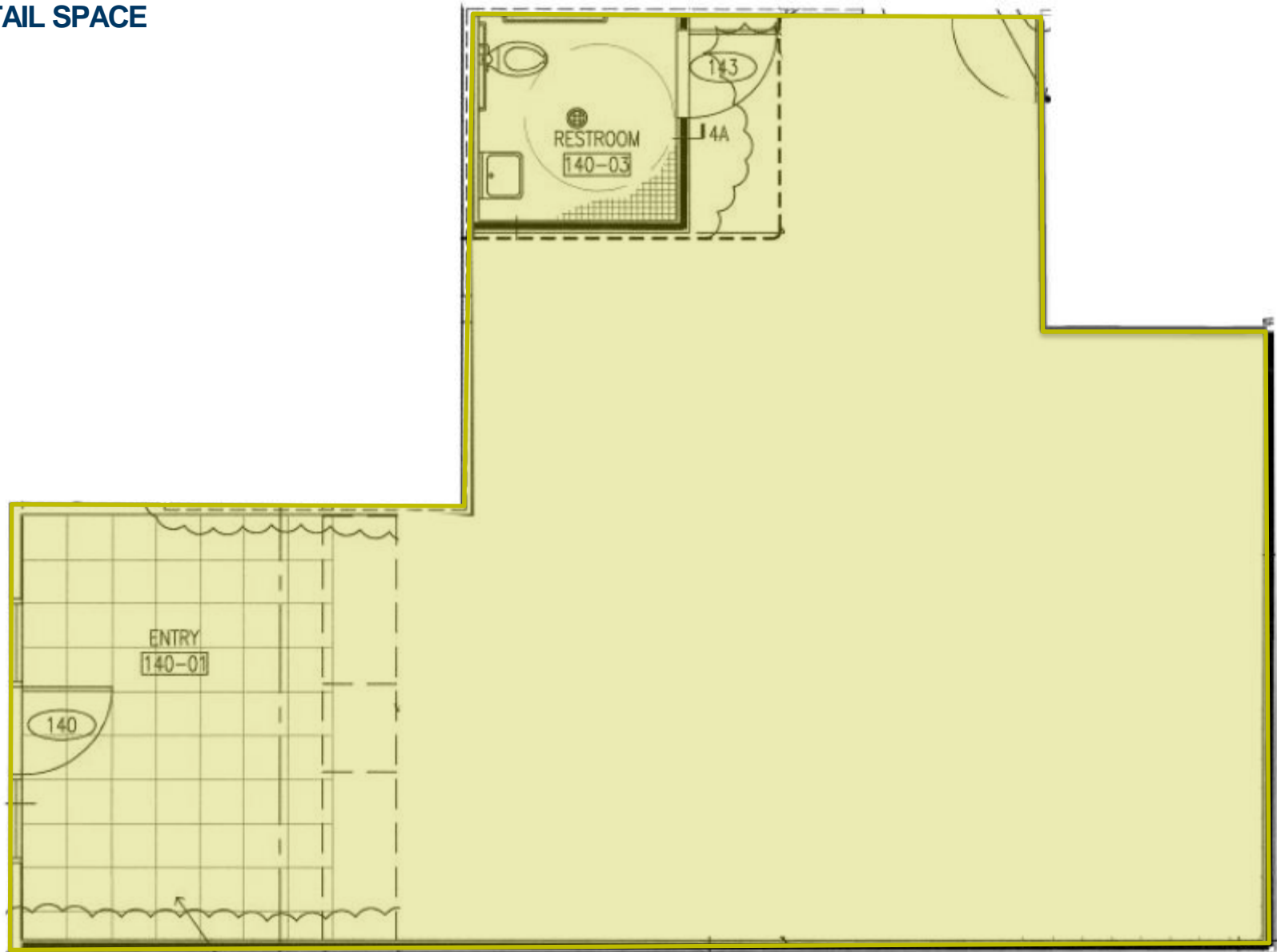
YEAR BUILT
2003

ZONING
DTG

// **THE TOWER AT CONVENTION
CENTER COURT**
855 M Street, Fresno, California

// GROUND FLOOR

±1,069 SQUARE FEET AVAILABLE
RETAIL SPACE

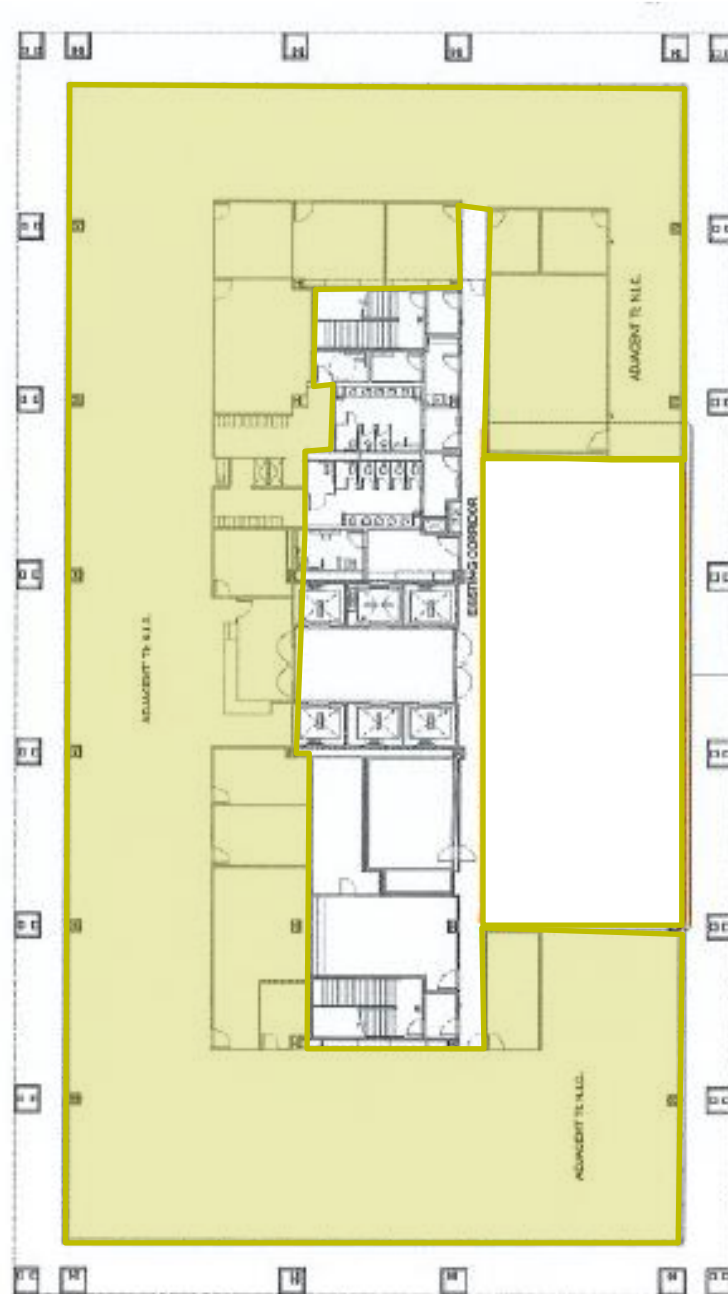


// THE TOWER AT CONVENTION
CENTER COURT
855 M Street, Fresno, California

// SECOND FLOOR

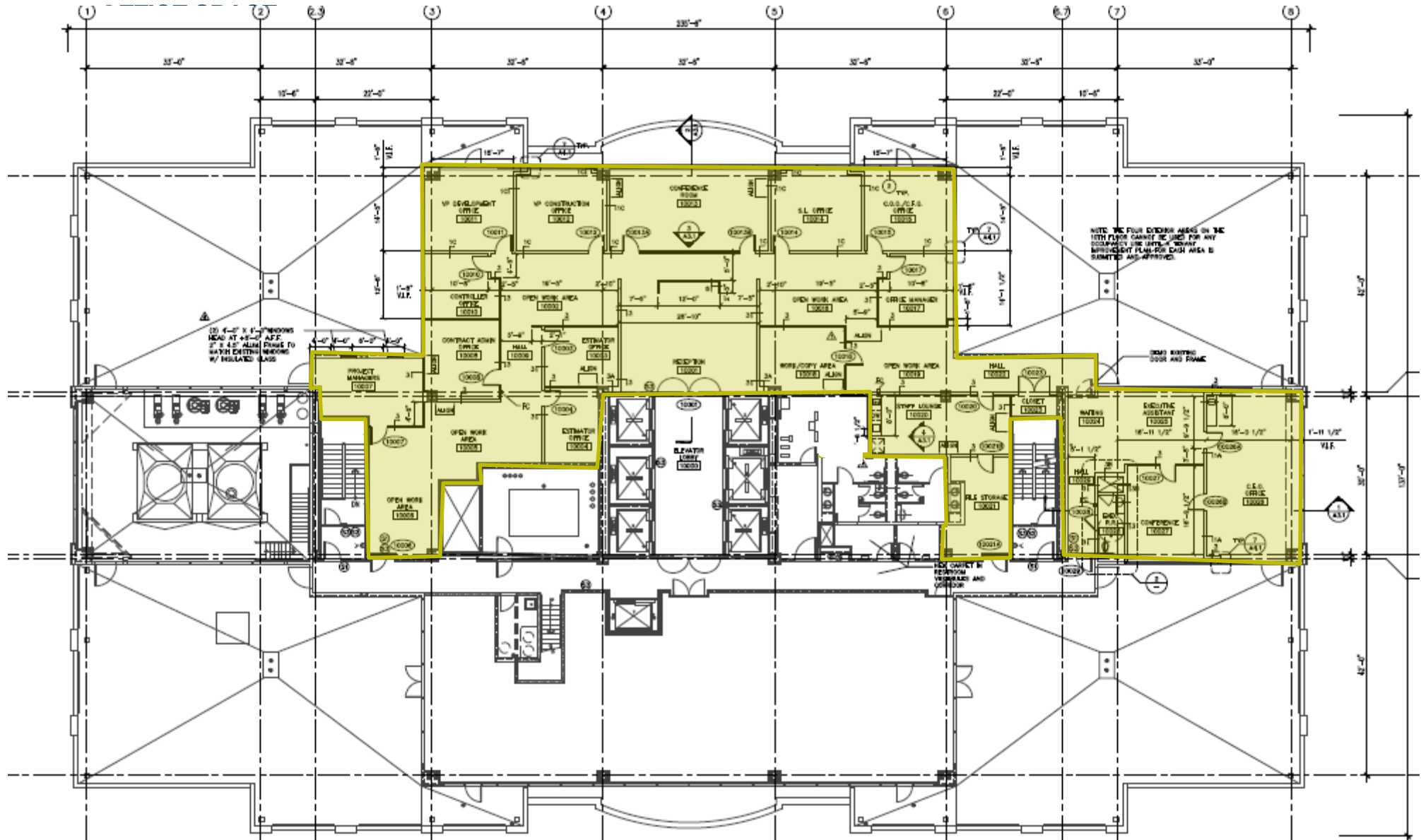
±21,509 SQUARE FEET AVAILABLE
OFFICE SPACE

CLICK HERE FOR
VIRTUAL TOUR



// THE TOWER AT CONVENTION
CENTER COURT
855 M Street, Fresno, California

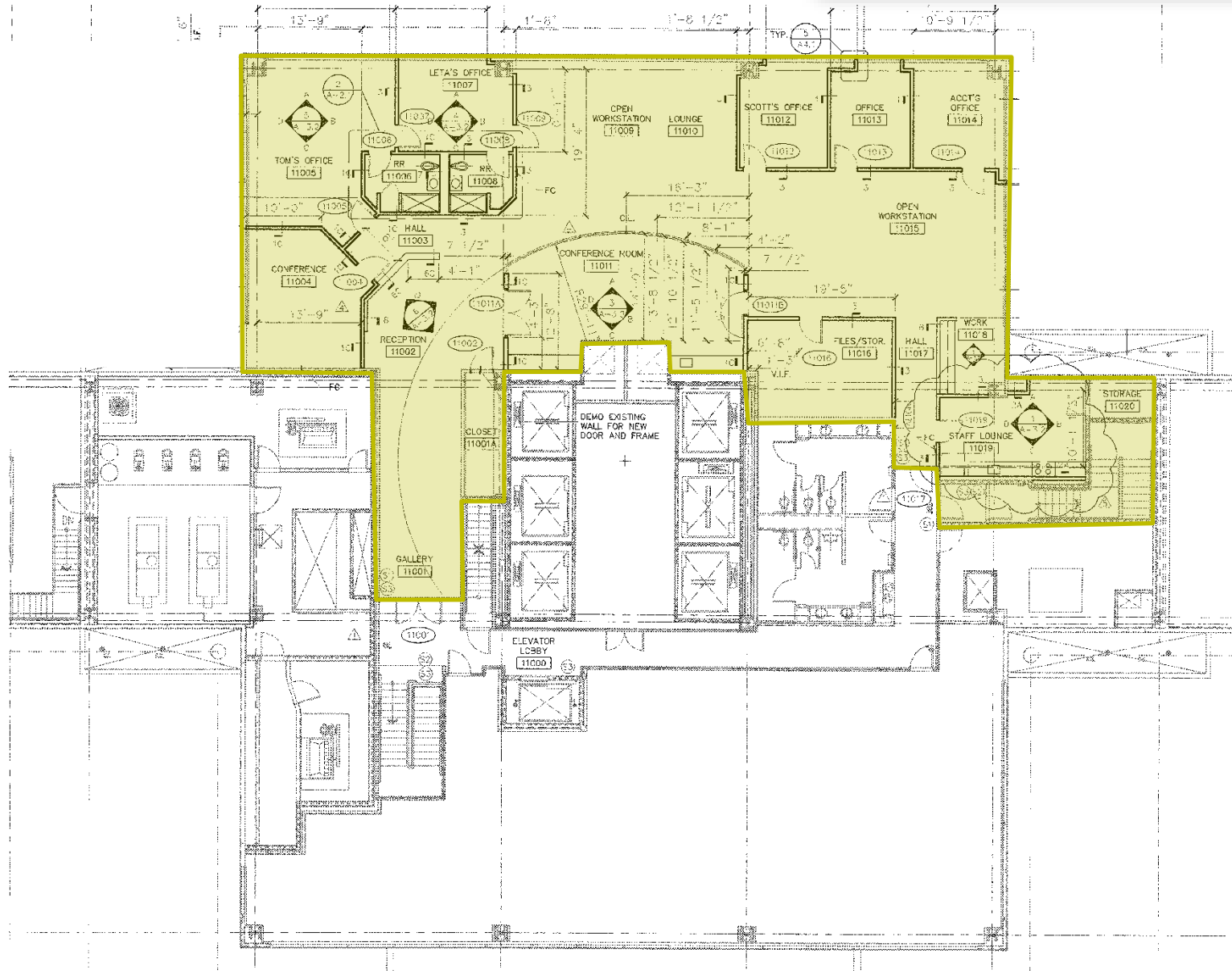
±9,266 SQUARE FEET AVAILABLE

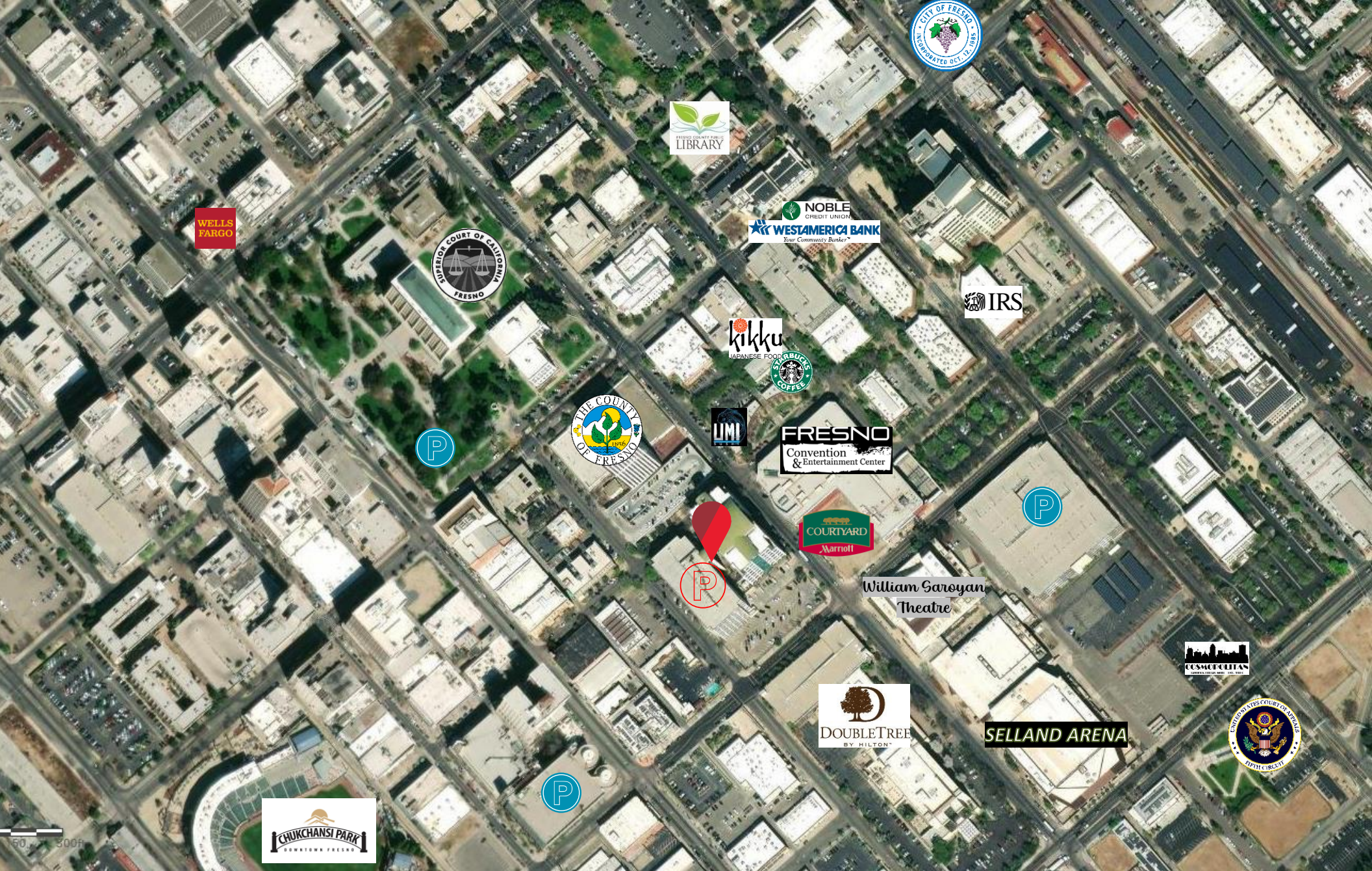


// ELEVENTH FLOOR – SUITE 1110

±5,745 SQUARE FEET AVAILABLE OFFICE SPACE

[CLICK HERE FOR
VIRTUAL TOUR](#)





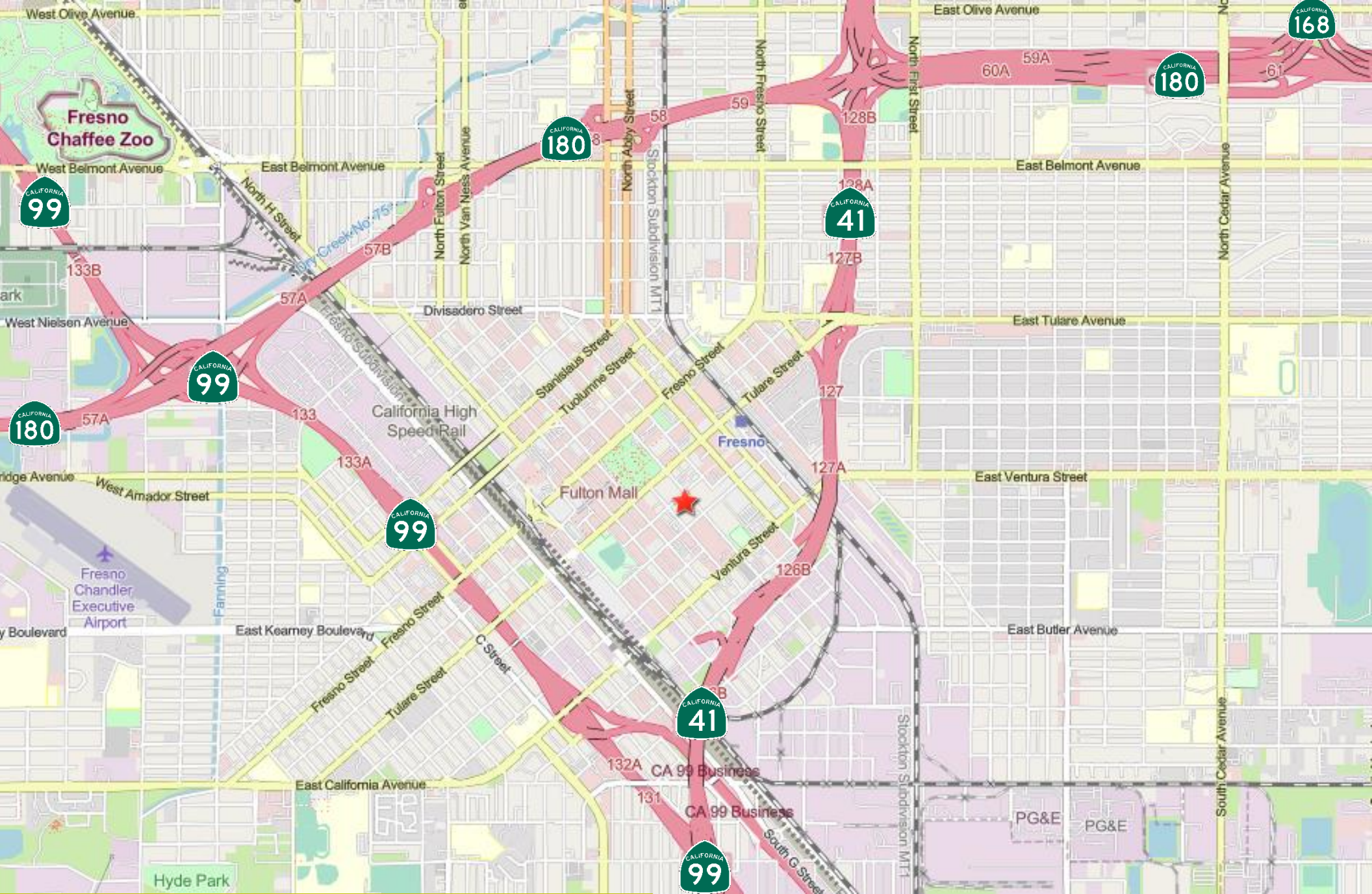
COMMUNITY AERIAL MAP



SITE: 855 M STREET

**THE TOWER AT CONVENTION
CENTER COURT**
855 M Street, Fresno, California

Cushman & Wakefield Copyright 2023. No warranty or representation, express or implied, is made to the accuracy or completeness of the information contained herein, and same is submitted subject to errors, omissions, change of price, rental or other conditions, withdrawal without notice, and to any special listing conditions imposed by the property owner(s). As applicable, we make no representation as to the condition of the property (or properties) in question.



OPEN STREET MAP AERIAL

**THE TOWER AT CONVENTION
CENTER COURT**
855 M Street, Fresno, California

Cushman & Wakefield Copyright 2023. No warranty or representation, express or implied, is made to the accuracy or completeness of the information contained herein, and same is submitted subject to errors, omissions, change of price, rental or other conditions, withdrawal without notice, and to any special listing conditions imposed by the property owner(s). As applicable, we make no representation as to the condition of the property (or properties) in question.

// GALLERY



PARKING GARAGE & BUILDING



VACANT SPACE



2ND FLOOR ELEVATORS



BATHROOM

// THE TOWER AT CONVENTION
CENTER COURT
855 M Street, Fresno, California

// GALLERY



LOBBY



VACANT SPACE



VIEW OF DOWNTOWN



VACANT SPACE

// THE TOWER AT CONVENTION
CENTER COURT
855 M Street, Fresno, California



// CONTACT

TONY CORTOPASSI
Managing Director
+1 559 433 3549
License# 01413706
tony.cortopassi@cushwake.com

