

**SUITE 200: ±3,802 RSF**  
**ASKING RATE: \$4.00 MODIFIED GROSS**

**SECOND FLOOR AVAILABLE FOR LEASE**

# 201 LAFAYETTE CIRCLE

L A F A Y E T T E | C A L I F O R N I A



**CUSHMAN &  
WAKEFIELD**

**CHRIS BAKER**

Executive Director  
925.627.2888 | LIC #01334466  
[chris.baker@cushwake.com](mailto:chris.baker@cushwake.com)



# 201 LAFAYETTE CIRCLE

## PROPERTY HIGHLIGHTS



Highly Desired  
Downtown  
Location



Immediate Access  
to Restaurants and  
Retail Amenities



Walking Distance  
to BART



Twenty (20)  
onsite parking  
stalls



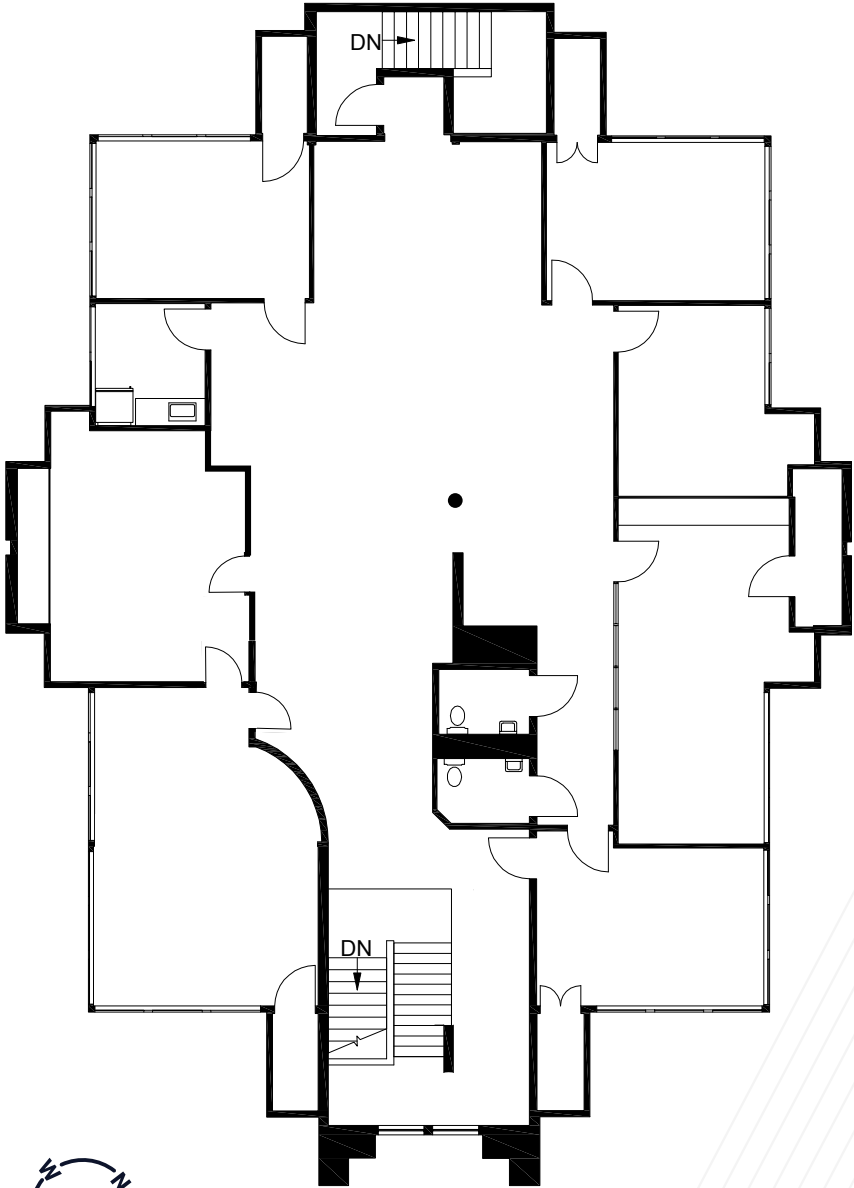
High Identity  
Building  
with Signage  
Opportunity



201 LAFAYETTE CIRCLE

FLOOR PLAN

SUITE 200: ±3,802 RSF



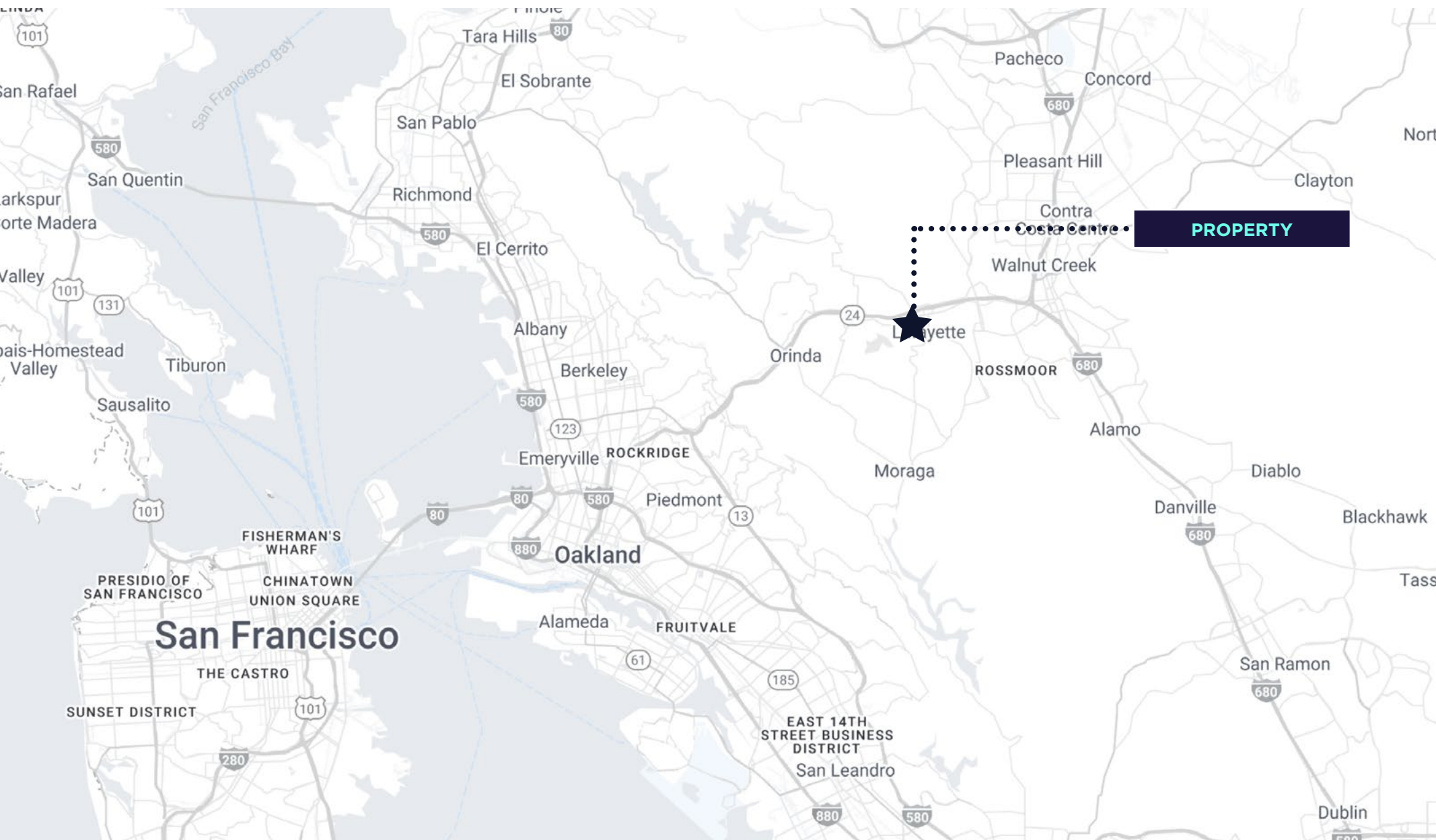
LAFAYETTE CIR



HOUGH AVE

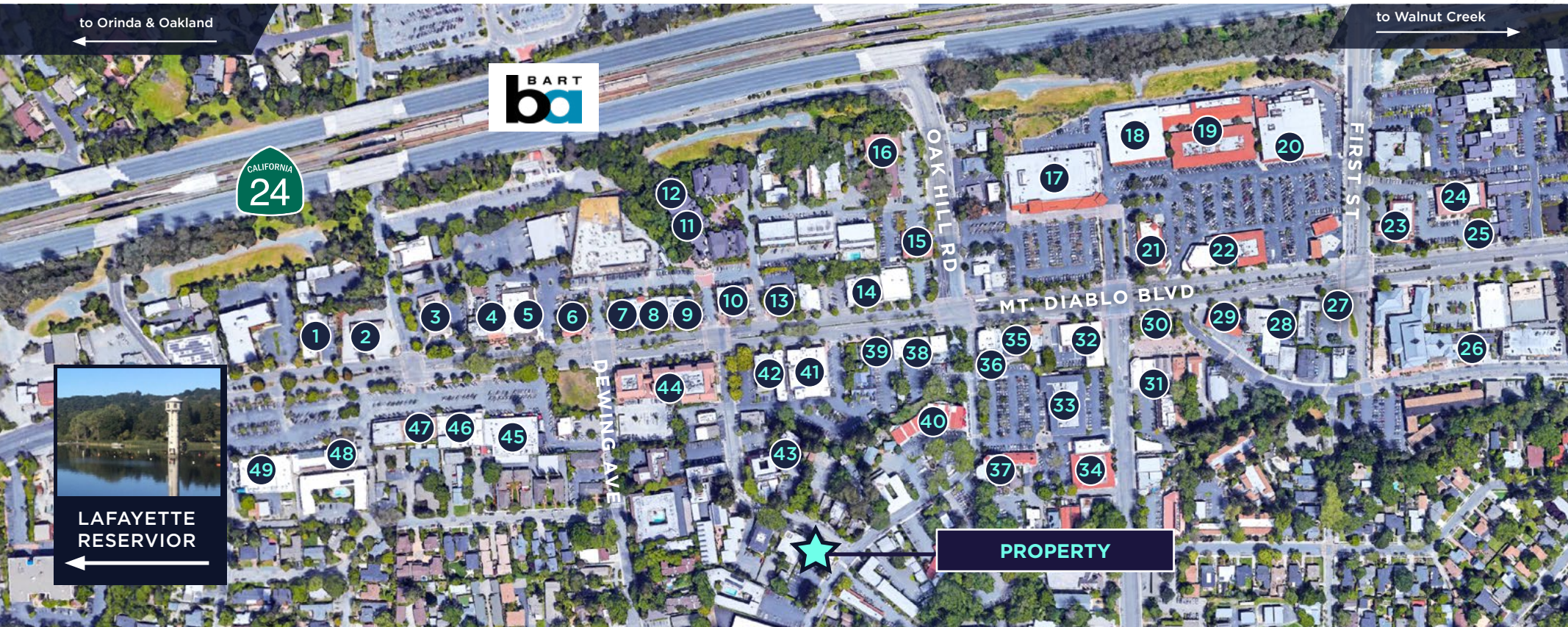
# 201 LAFAYETTE CIRCLE

## LOCATION AERIAL





# AMENITIES AERIAL



- |  |  |  |   |  |   |                            |                                 |
|--|--|--|---|--|---|----------------------------|---------------------------------|
| 1. Mechanic's Bank   | 10. AT&T<br>BevMo!   | Millie's American Kitchen                                      | 23. U.S. Bank   | Blue Sapphire Homes  | Beadazzled                                    | 39. Postino                | Misto Lino                      |
| 2. Chevron   |  | 18. McCaulou's   | Patelco   | 33. Harper Greer   | 36. Roam Burgers                              | 40. Lafayette Public House | 44. Diablo Foods                |
| 3. Wells Fargo   |  | 19. Noah's NY Bagels   | 24. Lilikoi Boba  | La Chataigne   | 37. Tutu's                                    | Patrizia Marrone           | 45. CVS                         |
| 4. World Travel HQ<br>Shoe Repair<br>UPS Store<br>Rancho Cantina | 11. Oasis Cafe<br>12. Town Center Apts.<br>13. Great Clips<br>DouglaH Designs<br>Floral Arts<br>Cleaners | Peets<br>Chipotle<br>Jamba Juice<br>Yogurt Shack<br>Blue Ginko | 25. Kane Sushi<br>26. Lafayette Library<br>27. Taco Bell<br>28. Orange Theory | Sliver Pizzeria<br>Kinko's<br>Clocks Etc.<br>Sharp Bicycle<br>Art & Science of Eyewear | Papillon<br>Solano Jewelers<br>Caroline Salon | Hide Out Kitchen & Cafe    | Beauty Supplies Plus<br>Verizon |
| 5. Walgreens   | 14. Zahra Boutique<br>Chloe Nails  | 20. Whole Foods  | Plush Beauty<br>Reflection Salon  | 34. Kinko's  | 38. El Jarro                                  | Francesca's                | Your CBD Store                  |
| 6. Pet Food Express  | 15. Uncle Yu's   | 21. Bank of America  | 29. Chevron   | 35. Starbucks  | Ms Karen's Place                              | Bank of the West           | Lafayette Vogue                 |
| 7. Panda Express<br>Batch and Brine                              | 16. Indigo & Poppy   | 22. Citi Bank<br>Jackson's Liquors                             | 30. Plaza Park  | J. McLaughlin<br>Blue Mercury<br>Color Me Mine   | Lafayette Pack & Ship                         | 42. Bank of the West       | Johnny's Donuts                 |
| 8. Pizza Antica<br>SusieCakes                                    | 17. Safeway  | 26. Lafayette Library  | 31. Hollie's Homegrown  | Chico's  | El Jarro Mexican Cafe                         | 43. Social Bird            | California Haircuts             |
| 9. Barranco  |  | 27. Taco Bell  | 32. UPS Store   | DouglaH Designs  | Poke Go                                       | Mighty Pilates             | 47. US Post Office              |
|  |  | 28. Orange Theory  |   |  | Amarin Thai                                   | Philz Coffee               | 48. Rising Loafer               |
|  |  | 29. Chevron  |   |  | Round Up Saloon                               | Zoonie's Candy Shop        | Swell Little Donuts             |
|  |  | 30. Plaza Park   |   |  |   | Marilyn Monroe Spa         |                                 |
|  |  | 31. Hollie's Homegrown   |   |  |   | IDo Drystyle               | 49. Trader Joe's                |
|  |  | 32. UPS Store  |   |  |   |                            |                                 |

=Food/Coffee Shops/Restaurants
  =Grocery Stores/Pharmacy
  =Retail
  =Services
  =Salon/Spas
  =Other



# 201 LAFAYETTE CIRCLE

## LAFAYETTE, CALIFORNIA



### IDEAL EAST BAY LOCATION

The Town of Lafayette is located in the beautiful rolling hills of Contra Costa County. It is ideal for those looking for a central small-town location with close proximity to larger cities, like Walnut Creek (4.8 miles), Oakland (13 miles) and San Francisco (21.3 miles). Its Mediterranean climate offers perfect growing conditions for produce year-round and with an average of 262 sunny days per year, many schools and businesses in the Lafayette community take advantage of solar power.

### TOP RATED SCHOOLS

Lafayette is famous for its excellent public school system. The Acalanes, Campolindo, Las Lomas, and Miramonte High Schools all rank in the top 60 of the 1,000 high schools in California based upon the Academic Performance Index (API) and the top 4% of all high schools in the United States for strength of the Advanced Placement Program. All the schools in the district are fully accredited by the Western Association of Schools and Colleges.

### PARKS, TRAILS & RECREATION

Lafayette has over 40-miles of dedicated trails and more than 90-acres of public parklands ranging from wilderness and nature areas, to sports fields, playgrounds and the downtown plaza. The Lafayette Community Park offers 3-miles of trails, and about 6-miles of City trails connecting to other hiking areas such as the Lafayette Reservoir (a 550-acre undisturbed oak woodland located just a half mile from downtown), Lafayette Ridge and Briones Regional Park.

### UPSCALE AMENITIES

Lafayette offers an idyllic European-style retreat surrounded by expanses of oak trees and the Northern California countryside. You can relax poolside at the French Chateau-inspired Lafayette Park Hotel & Spa before zipping over to the enchanting Italian ambiance of Postino's for dinner. With a wide range of high-end restaurants, wineries and shops, Lafayette has it all.





## PHOTO GALLERY SECOND FLOOR







# PHOTO GALLERY

## EXTERIOR PHOTOS





A low-angle photograph of a modern house with a mix of wood and concrete siding. A large tree trunk is on the left. The sky is blue.

**FOR MORE INFORMATION, CONTACT:**

**CHRIS BAKER**

Executive Director

925.627.2888 | LIC #01334466 | [chris.baker@cushwake.com](mailto:chris.baker@cushwake.com)

©2025 Cushman & Wakefield. All rights reserved. The information contained in this communication is strictly confidential. This information has been obtained from sources believed to be reliable but has not been verified. NO WARRANTY OR REPRESENTATION, EXPRESS OR IMPLIED, IS MADE AS TO THE CONDITION OF THE PROPERTY (OR PROPERTIES) REFERENCED HEREIN OR AS TO THE ACCURACY OR COMPLETENESS OF THE INFORMATION CONTAINED HEREIN, AND SAME IS SUBMITTED SUBJECT TO ERRORS, OMISSIONS, CHANGE OF PRICE, RENTAL OR OTHER CONDITIONS, WITHDRAWAL WITHOUT NOTICE, AND TO ANY SPECIAL LISTING CONDITIONS IMPOSED BY THE PROPERTY OWNER(S). ANY PROJECTIONS, OPINIONS OR ESTIMATES ARE SUBJECT TO UNCERTAINTY AND DO NOT SIGNIFY CURRENT OR FUTURE PROPERTY PERFORMANCE.

