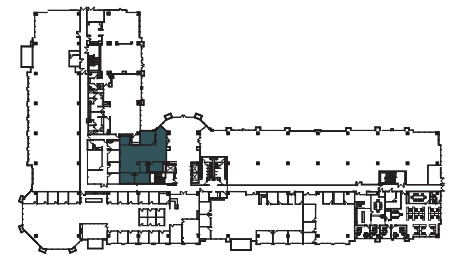
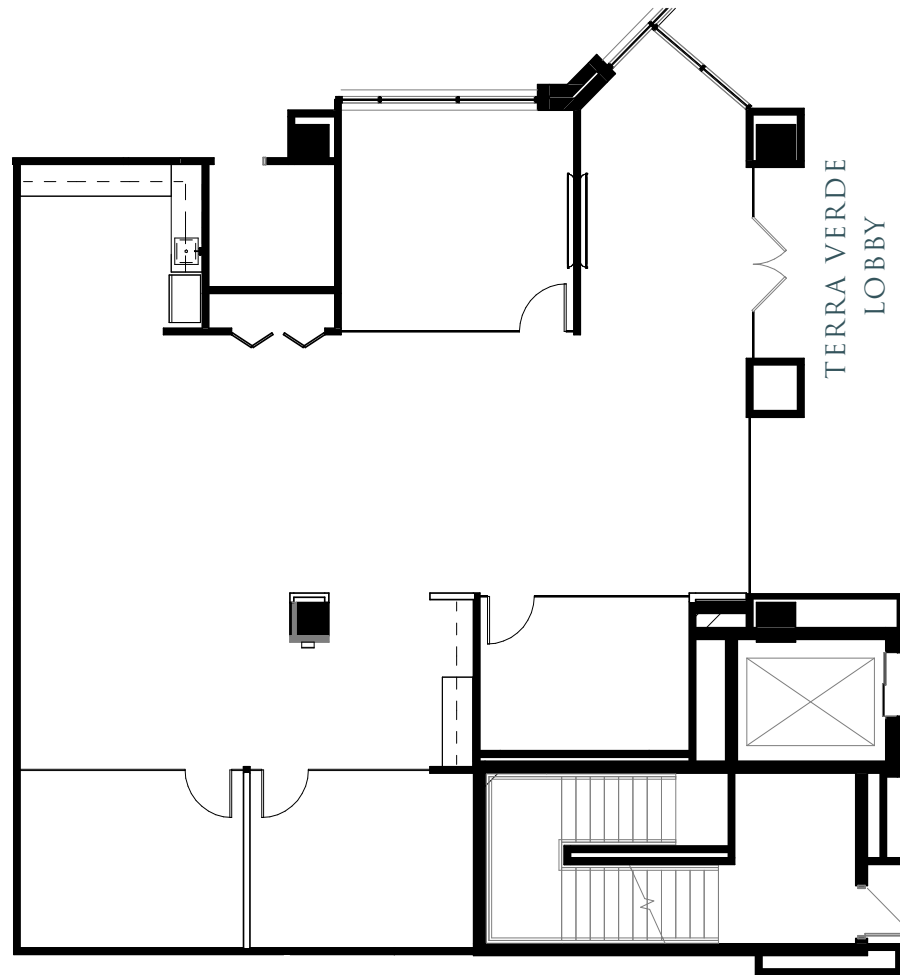


# TERRA VERDE

**SUITE 105**  
**±2,447 RSF**



FOR MORE INFO, PLEASE CONTACT:

**Chris Walker**  
Executive Managing Director  
+1 602 224 4466  
[chris.walker@cushwake.com](mailto:chris.walker@cushwake.com)

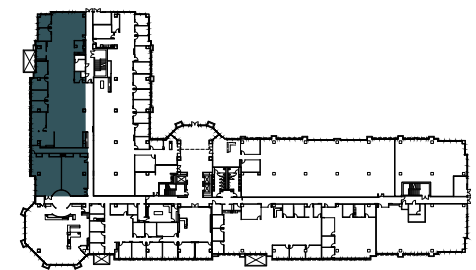
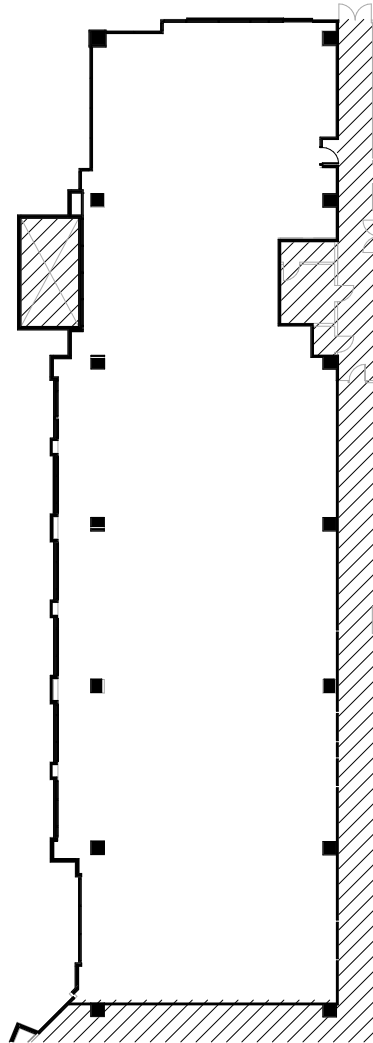
**Jeff Wentworth**  
Executive Managing Director  
+1 602 224 4423  
[jeff.wentworth@cushwake.com](mailto:jeff.wentworth@cushwake.com)

**Mike Beall**  
Executive Managing Director  
+1 602 224 4426  
[mike.beall@cushwake.com](mailto:mike.beall@cushwake.com)



# TERRA VERDE

**SUITE 112**  
**±10,112 RSF**



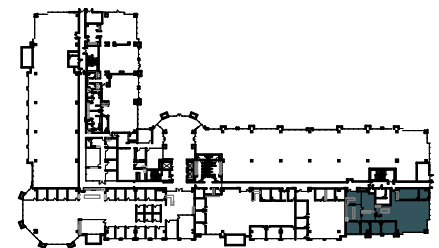
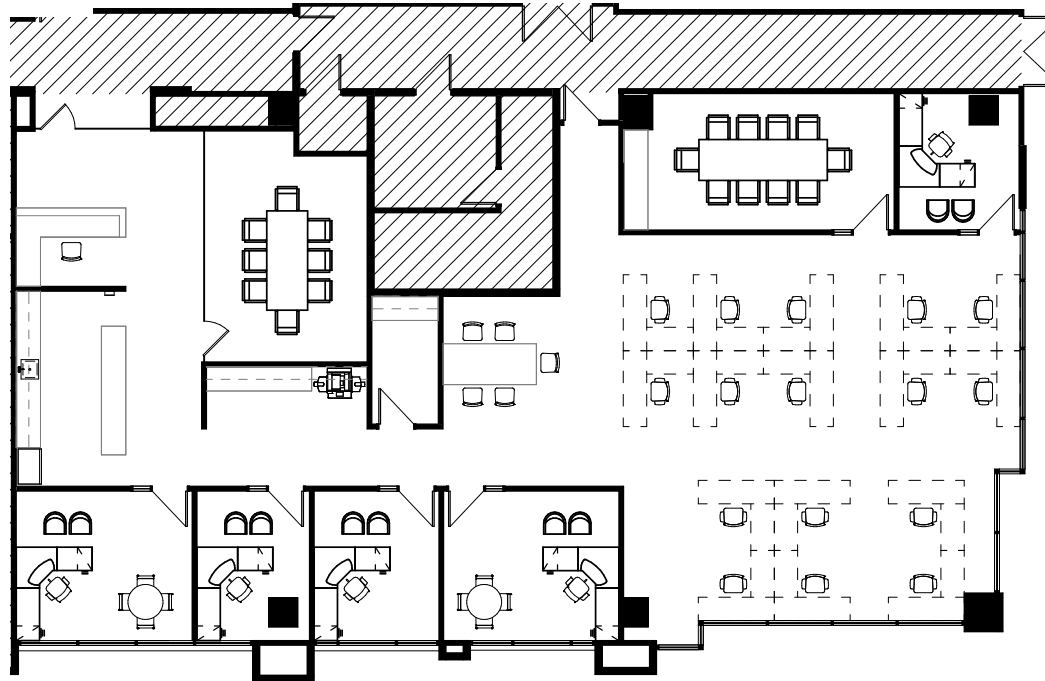
FOR MORE INFO, PLEASE CONTACT:

**Chris Walker**  
Executive Managing Director  
+1 602 224 4466  
[chris.walker@cushwake.com](mailto:chris.walker@cushwake.com)

**Jeff Wentworth**  
Executive Managing Director  
+1 602 224 4423  
[jeff.wentworth@cushwake.com](mailto:jeff.wentworth@cushwake.com)

**Mike Beall**  
Executive Managing Director  
+1 602 224 4426  
[mike.beall@cushwake.com](mailto:mike.beall@cushwake.com)





FOR MORE INFO, PLEASE CONTACT:

**Chris Walker**  
Executive Managing Director  
+1 602 224 4466  
chris.walker@cushwake.com

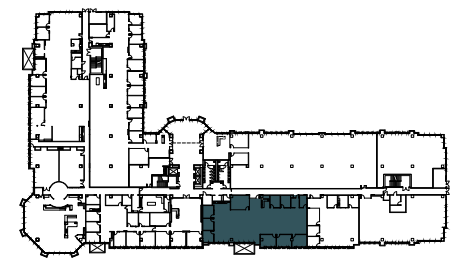
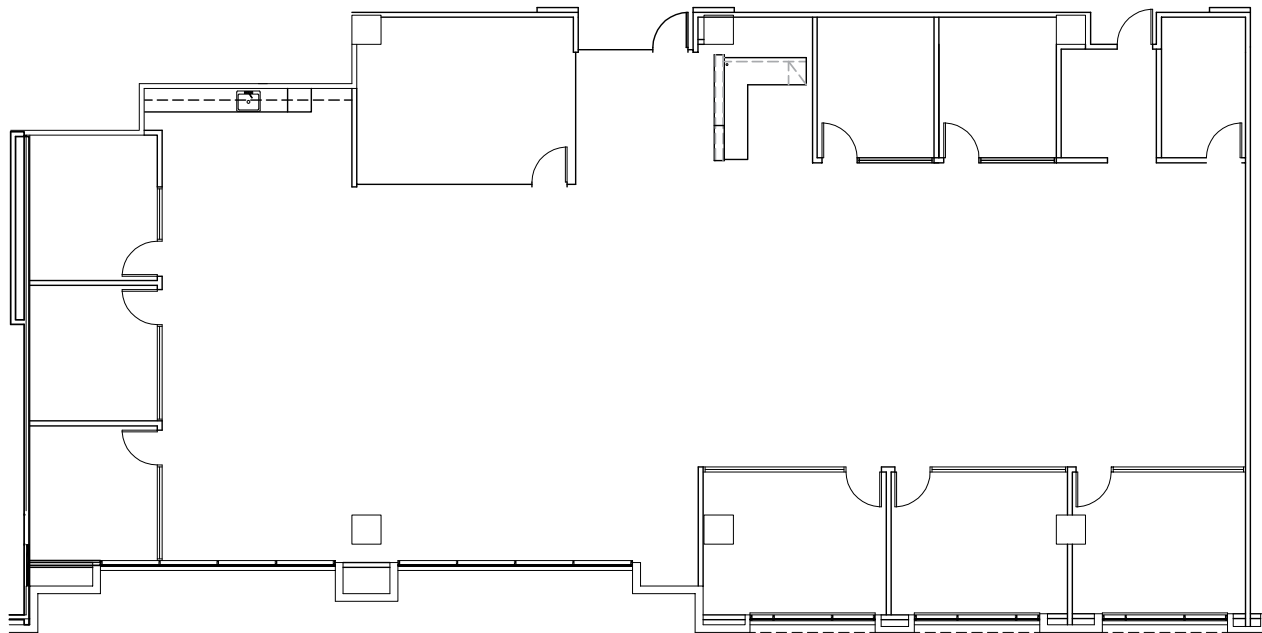
**Jeff Wentworth**  
Executive Managing Director  
+1 602 224 4423  
jeff.wentworth@cushwake.com

**Mike Beall**  
Executive Managing Director  
+1 602 224 4426  
mike.beall@cushwake.com



# TERRA VERDE

**SUITE 150**  
**±5,668 RSF**



FOR MORE INFO, PLEASE CONTACT:

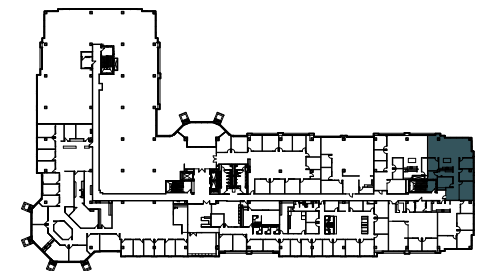
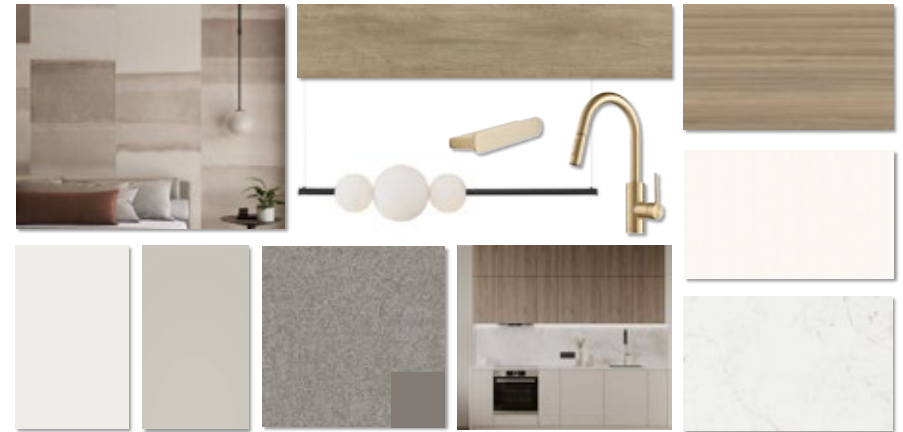
**Chris Walker**  
Executive Managing Director  
+1 602 224 4466  
[chris.walker@cushwake.com](mailto:chris.walker@cushwake.com)

**Jeff Wentworth**  
Executive Managing Director  
+1 602 224 4423  
[jeff.wentworth@cushwake.com](mailto:jeff.wentworth@cushwake.com)

**Mike Beall**  
Executive Managing Director  
+1 602 224 4426  
[mike.beall@cushwake.com](mailto:mike.beall@cushwake.com)

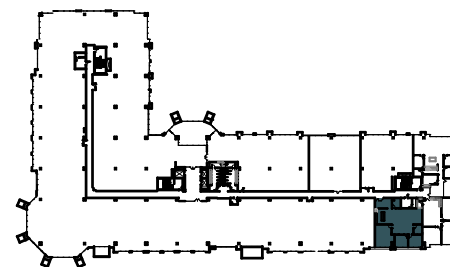
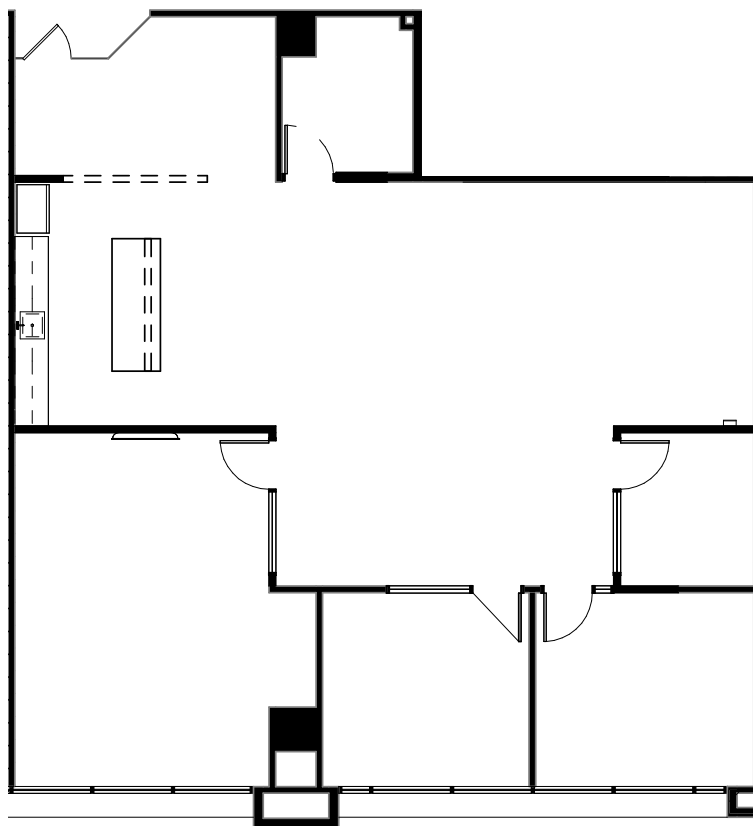


**SUITE 240 | SPEC**  
**±2,724 RSF**



**Mike Beall**  
Executive Managing Director  
+1 602 224 4426  
mike.beall@cushwake.com





FOR MORE INFO, PLEASE CONTACT:

**Chris Walker**  
Executive Managing Director  
+1 602 224 4466  
[chris.walker@cushwake.com](mailto:chris.walker@cushwake.com)

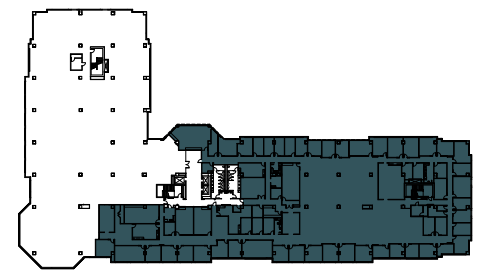
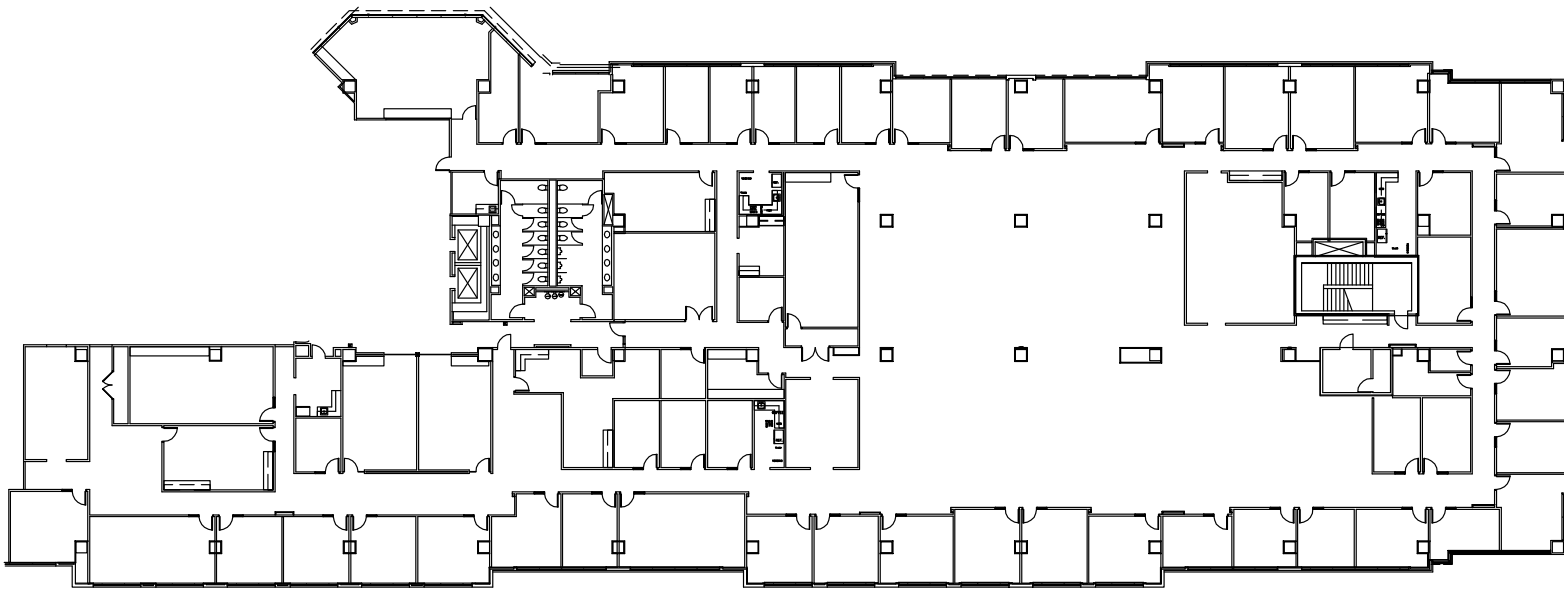
**Jeff Wentworth**  
Executive Managing Director  
+1 602 224 4423  
[jeff.wentworth@cushwake.com](mailto:jeff.wentworth@cushwake.com)

**Mike Beall**  
Executive Managing Director  
+1 602 224 4426  
[mike.beall@cushwake.com](mailto:mike.beall@cushwake.com)



# TERRA VERDE

SUITE 300  
± 35,457 RSF



FOR MORE INFO, PLEASE CONTACT:

**Chris Walker**  
Executive Managing Director  
+1 602 224 4466  
[chris.walker@cushwake.com](mailto:chris.walker@cushwake.com)

**Jeff Wentworth**  
Executive Managing Director  
+1 602 224 4423  
[jeff.wentworth@cushwake.com](mailto:jeff.wentworth@cushwake.com)

**Mike Beall**  
Executive Managing Director  
+1 602 224 4426  
[mike.beall@cushwake.com](mailto:mike.beall@cushwake.com)

