

FOR LEASE



CLASS.
CONVENIENCE.
AMENITIES.
LOCATION.
VISIBILITY.
HEALTH.



NORTH POINTE CENTER
5% to Procuring Broker

For More Information Please Contact:

Tony Cortopassi
Managing Director

Lic. 01413706

O 559 433 3549

M 559 907 1123

tony.cortopassi@cushwake.com

Cushman & Wakefield U.S., Inc.
9 River Park Place East Suite 101
Fresno, CA 93720

CUSHMANWAKEFIELD.COM

Cushman & Wakefield Copyright 2022. No warranty or representation, express or implied, is made to the accuracy or completeness of the information contained herein, and same is submitted subject to errors, omissions, change of price, rental or other conditions, withdrawal without notice, and to any special listing conditions imposed by the property owner(s). As applicable, we make no representation as to the condition of the property (or properties) in question.

North Pointe Center

6715 & 6795 N. Palm Avenue

Class "A" Office Space

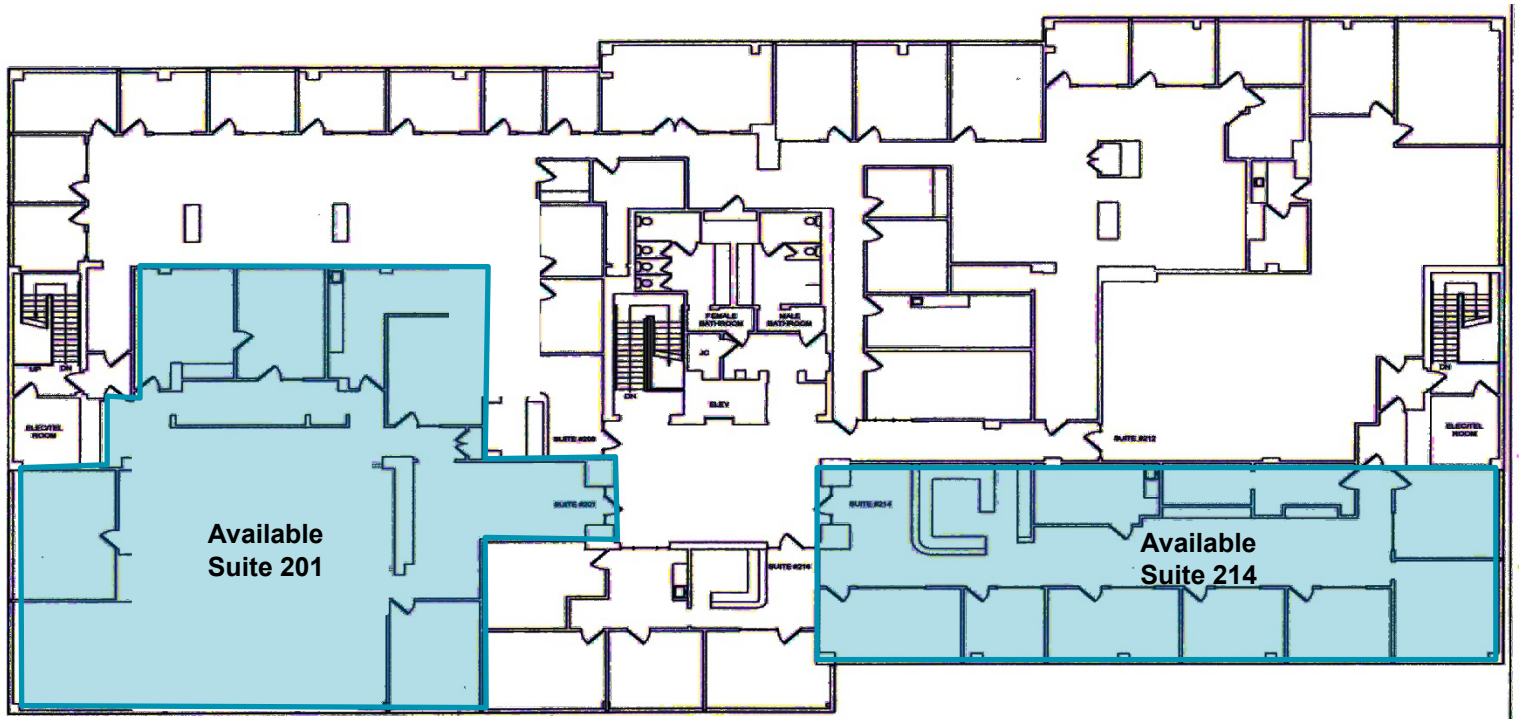
LOCATION, VISIBILITY, AMENITIES

This Class "A" center has recently gone through a major renovation with new lobbies, restrooms, common areas, landscaping, and the addition of electric vehicle charging stations. Coupled with its premier location and visibility, North Pointe Center is one of the top office complexes in Fresno and has made a dedication to health, sanitization, innovation, and technology. This mixed-use complex has a wide variety of restaurants located in the center and fast casual dining options within short walking distance. The property is also located on the Herndon Avenue Expressway which lends itself easy access across the city.

- 2nd busiest corridor in Fresno with an average daily traffic count of approximately 100,000 cars/day
- In close proximity to Freeway 41
- Several restaurants and retail services within walking distance
- Secured subterranean parking and ample unreserved surface parking
- Tenant Improvements negotiable
- High income demographic location
- Adjacent to the Palm Bluffs Corporate Center



SUITE	RSF	RATE/RSF/MO	COMMENTS
201	±5,380	\$1.85 NNN	4 private offices, reception, open office area, break room & storage rooms.
214	±4,143	\$1.85 NNN	5 – 6 private offices, conference, reception, break room, & storage.



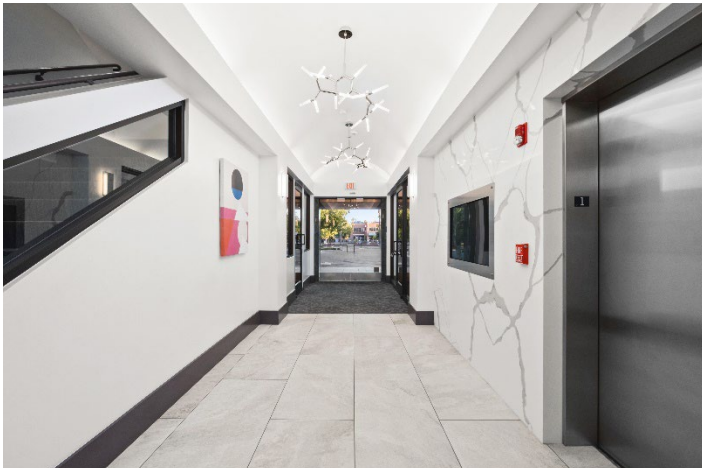
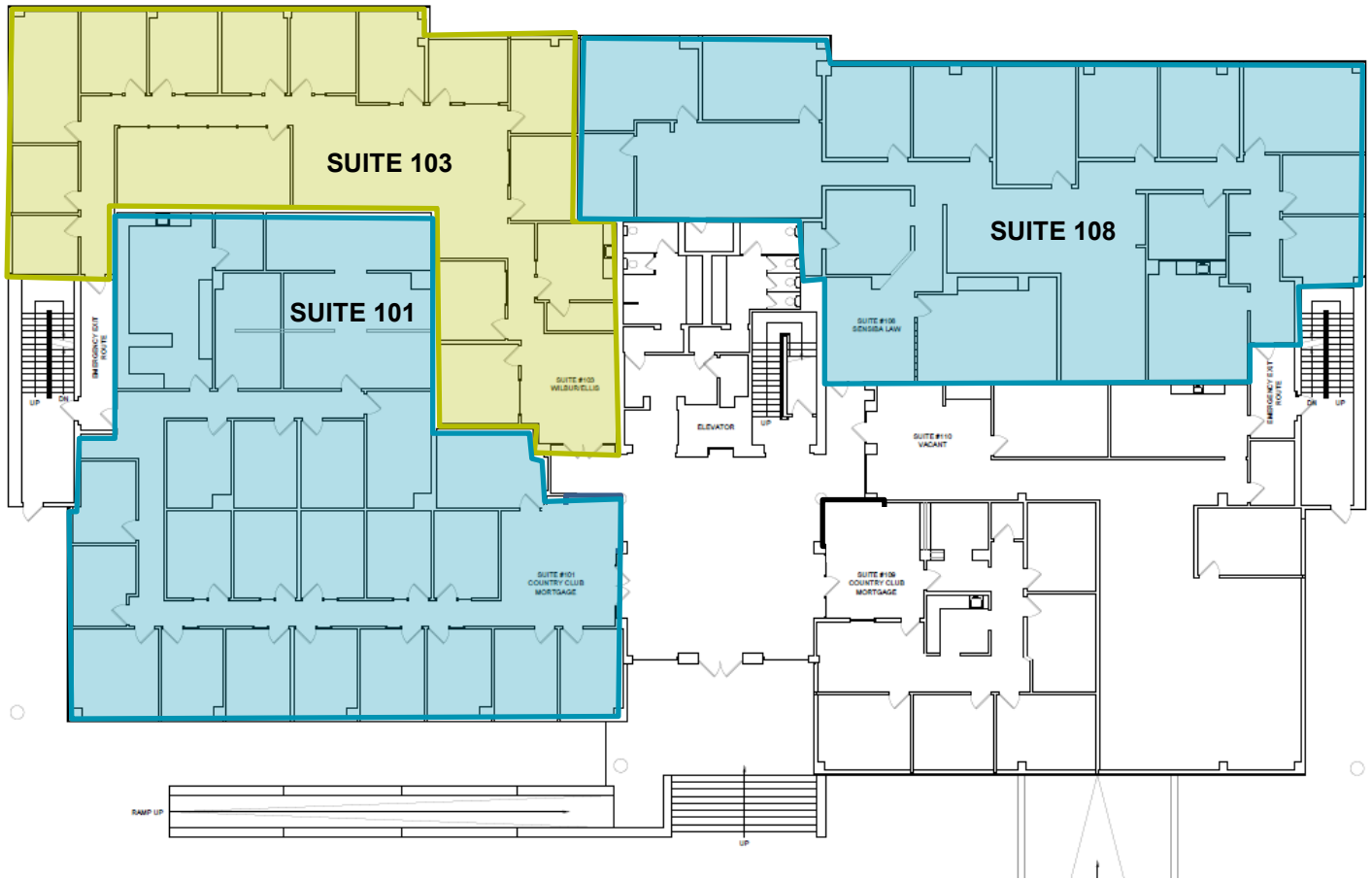
Tony Cortopassi
Managing Director
Lic. 01413706
O 559 433 3549
M 559 907 1123
tony.cortopassi@cushwake.com

Cushman & Wakefield U.S., Inc.
9 River Park Place East Suite 101
Fresno, CA 93720

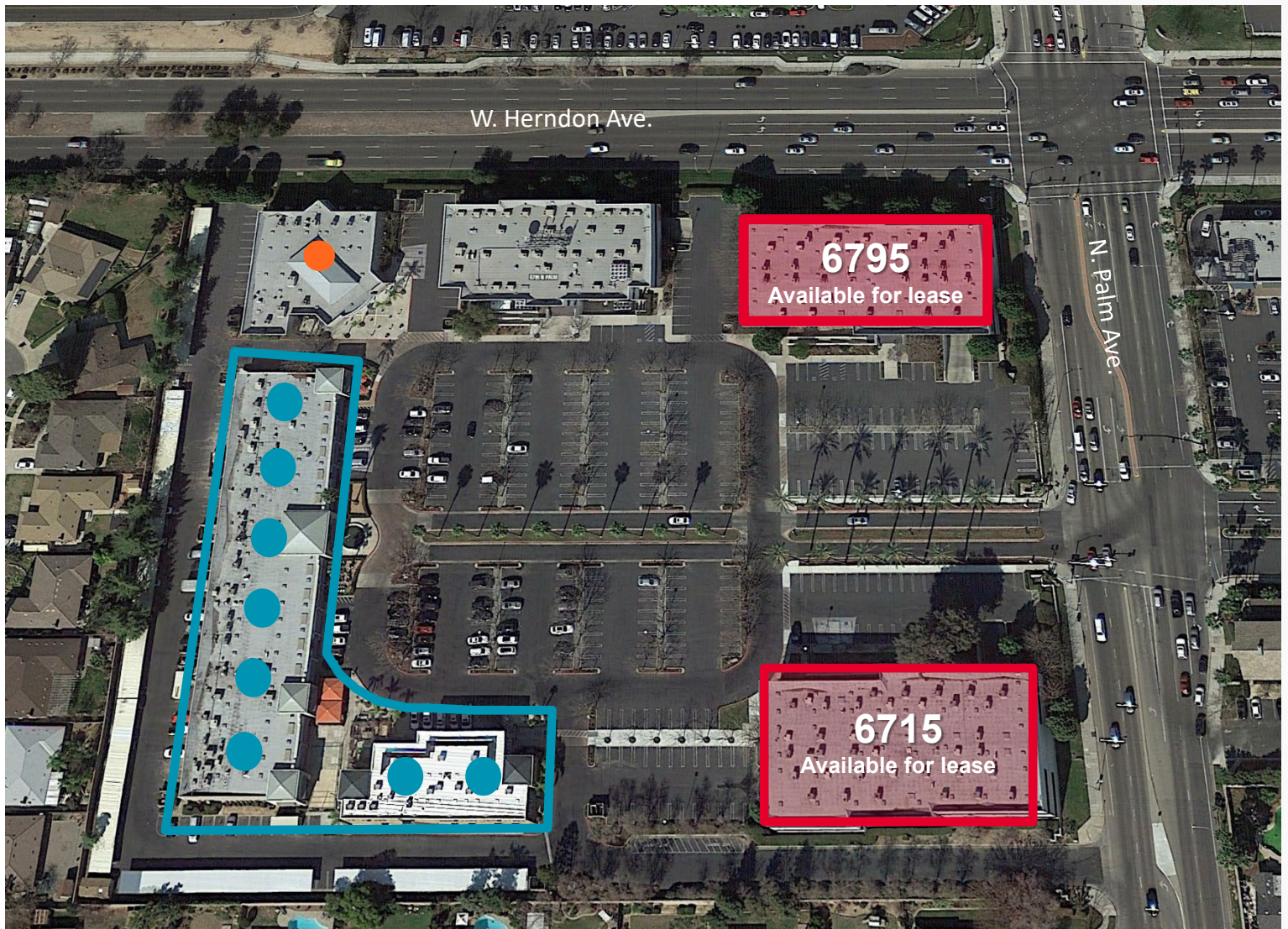
CUSHMANWAKEFIELD.COM

SUITE	RSF	RATE/RSF/MO	COMMENTS
101	±5,948	\$1.85 NNN	Reception area, 18 private offices, conference room, break room, and open area
103	±4,321	\$1.85 NNN	Reception, 11 private offices, 2 conference rooms, work room, and break room
108	±5,705	\$1.85 NNN	Reception, 11 private offices, conference room, break room and storage and space for cubes.

*Suites 101 & 103 can be combined for a total square footage of ±10,269



SITE PLAN / AERIAL SWC Herndon & Palm Avenues



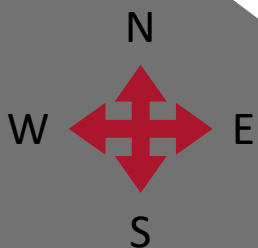
- California Imaging

RESTAURANTS

- Tabachines Cocina
- Bella Pasta
- Tamari
- Parma's
- Milano

AMENITIES

- The Bar Method
- Fringe Salon
- Georgio's Shoes & Repair / Handmade Leather Goods
- Edinhart Realty & Design



SURROUNDING RETAIL / AERIAL



Kaiser Hospital

Home Depot

Costco

St. Agnes Hospital



WALMART

Univision

First American Title

Infinity

Butterfish
Dutch Bros

Lexus

Starbucks, Broilers &
Nail Spa

W. Herndon Ave.

Piazza del Pane

N. Palm Ave.

Mercedes Benz





For More Information Please Contact:

Tony Cortopassi
Managing Director

Lic. 01413706

O 559 433 3549

M 559 907 1123

tony.cortopassi@cushwake.com



Cushman & Wakefield
9 River Park Place East Suite 101
Fresno, CA 93720
cushmanwakefield.com



For More Information Please Contact:

Tony Cortopassi
Managing Director

Lic. 01413706

O 559 433 3549

M 559 907 1123

tony.cortopassi@cushwake.com



Cushman & Wakefield
9 River Park Place East Suite 101
Fresno, CA 93720
cushmanwakefield.com