

FOR LEASE
4,000 - 12,113 SF

2605 N FAIRVIEW AVE

ROSEVILLE, MN



PROPERTY INFORMATION

DANNY MCNAMARA
Managing Director
Direct: +1 952 893 8895
danny.mcnamara@cushwake.com

JAKE KELLY
Director
Direct: +1 952 465 3303
jake.kelly@cushwake.com

Address

2605 N Fairview Ave
Roseville, MN

Building Availability

Option 1 (2605): 4,000 SF Total
Option 2 (2599): 4,113 SF Total
Option 3 (2593): 4,000 SF Total

Year Built

1979

Clear Height

14'

Loading

Option 1: 1 Drive-ins
Option 2: 1 Dock Door
Option 3: 1 Dock Door

Access

Direct access to 35W
Hwy 36 & 51

Net Rental Rate

Negotiable

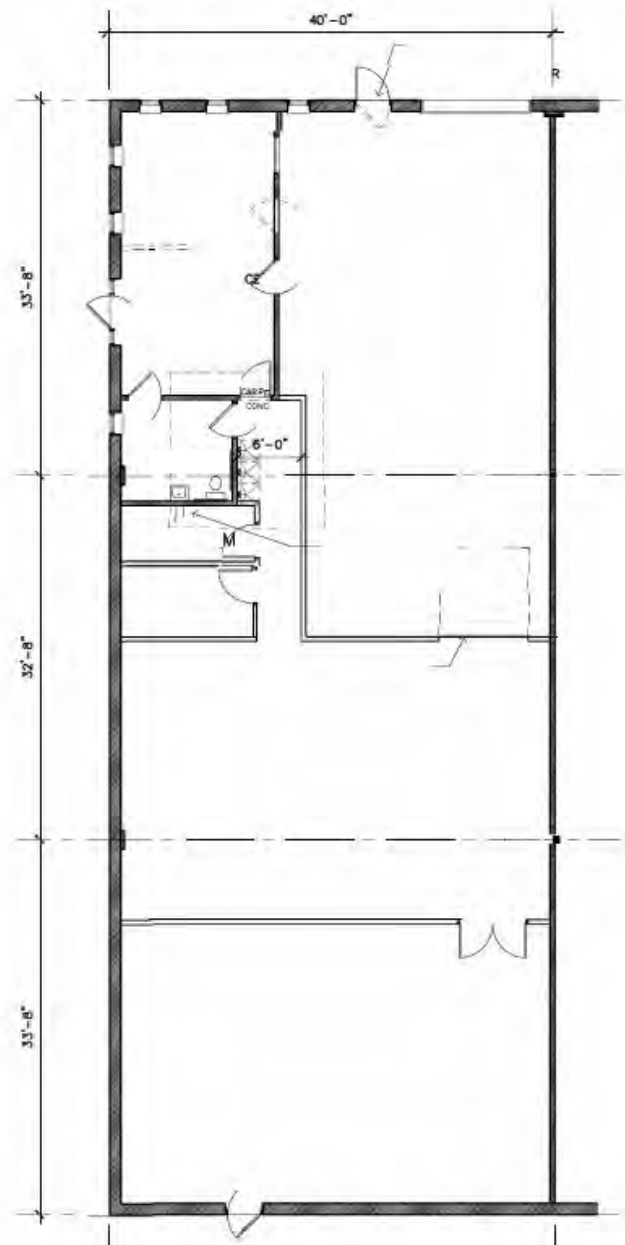
2026 CAM & TAX

\$6.31 PSF Total



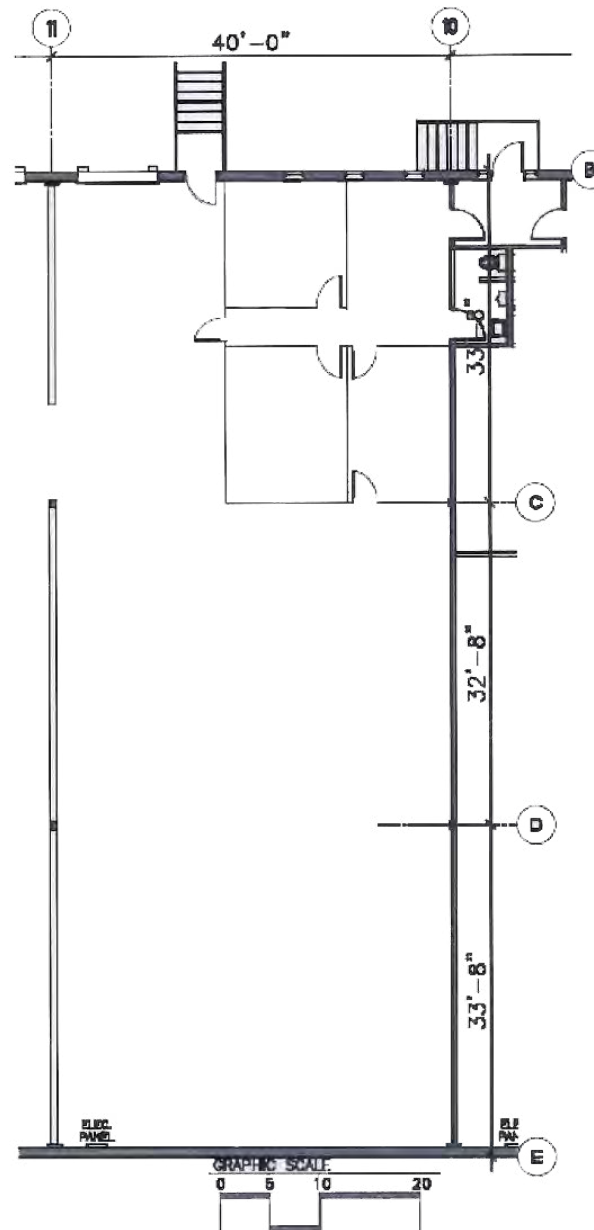
FLOOR PLAN

OPTION 1: SUITE 2605 4,000 SF TOTAL

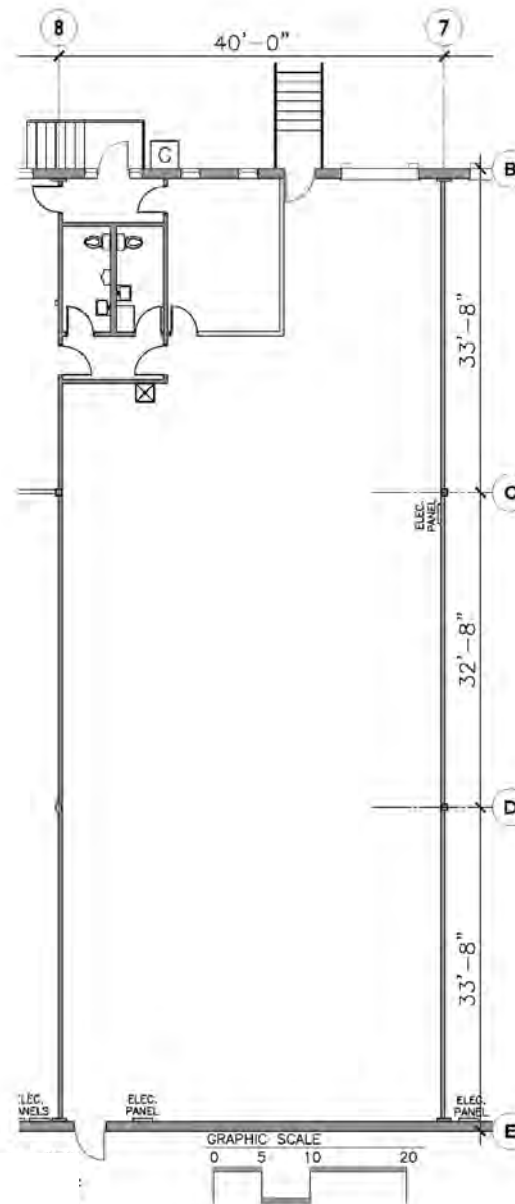


FLOOR PLAN

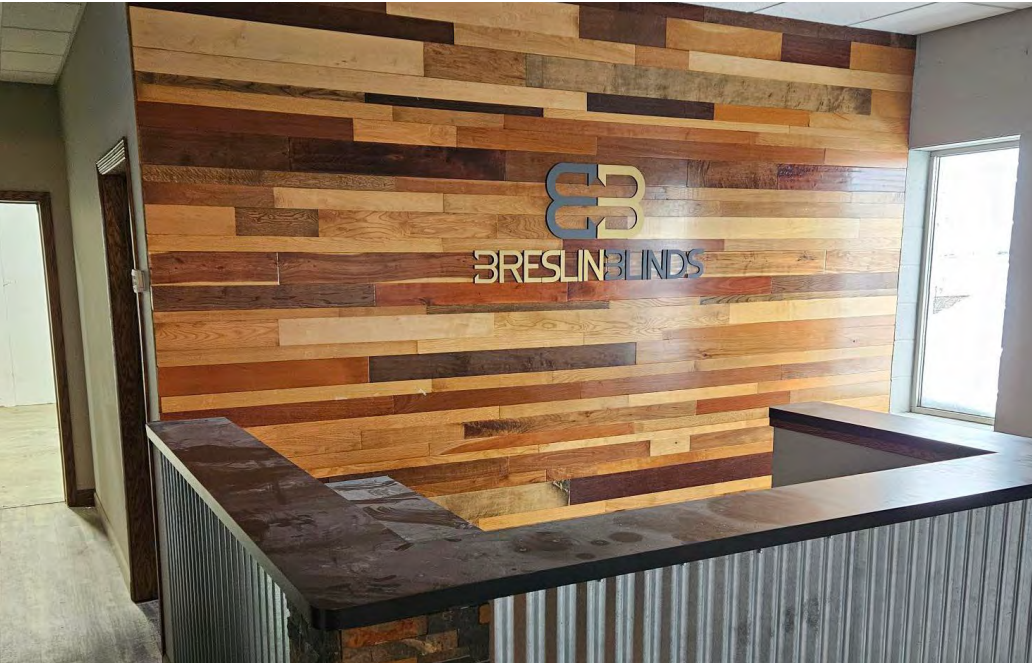
OPTION 2: SUITE 2599 4,113 SF TOTAL



OPTION 3: SUITE 2593
4,000 SF TOTAL



PHOTOS



AMENITIES



DANNY MCNAMARA
Managing Director
Direct: +1 952 893 8895
danny.mcnamara@cushwake.com

JAKE KELLY
Director
Direct: +1 952 465 3303
jake.kelly@cushwake.com

3500 American Blvd W
Minneapolis, MN 55431
952 831 1000
IndustrialMN.com

©2025 Cushman & Wakefield. All rights reserved. The information contained in this communication is strictly confidential. This information has been obtained from sources believed to be reliable but has not been verified. NO WARRANTY OR REPRESENTATION, EXPRESS OR IMPLIED, IS MADE AS TO THE CONDITION OF THE PROPERTY (OR PROPERTIES) REFERENCED HEREIN OR AS TO THE ACCURACY OR COMPLETENESS OF THE INFORMATION CONTAINED HEREIN, AND SAME IS SUBMITTED SUBJECT TO ERRORS, OMISSIONS, CHANGE OF PRICE, RENTAL OR OTHER CONDITIONS, WITHDRAWAL WITHOUT NOTICE, AND TO ANY SPECIAL LISTING CONDITIONS IMPOSED BY THE PROPERTY OWNER(S). ANY PROJECTIONS, OPINIONS OR ESTIMATES ARE SUBJECT TO UNCERTAINTY AND DO NOT SIGNIFY CURRENT OR FUTURE PROPERTY PERFORMANCE.