

2,500 SF Retail Space with Off-Street Parking Lot

FOR SUBLEASE

2105 SE Division Street, Portland, OR 97202



UNIQUE HIGH VISIBILITY RETAIL | SE DIVISION

CALL FOR RATES TERM THRU 05/31/2033

- 2,500 SF Building with Mezzanine
- Space includes Restroom & Storage
- Rare Off-Street Parking Lot (±6 Stalls)
- One (1) 16' W x 10' T Roll-Up Door
- Zoning: CM2 (Commercial Mixed-Use 2)
- Great visibility and access on SE Division
- Surrounded by many popular retail brands
- 1 Block from popular New Seasons Market
- Located at the base of Ladd's Addition
- Walk Score: 93 | Bike: 97 | Transit: 58

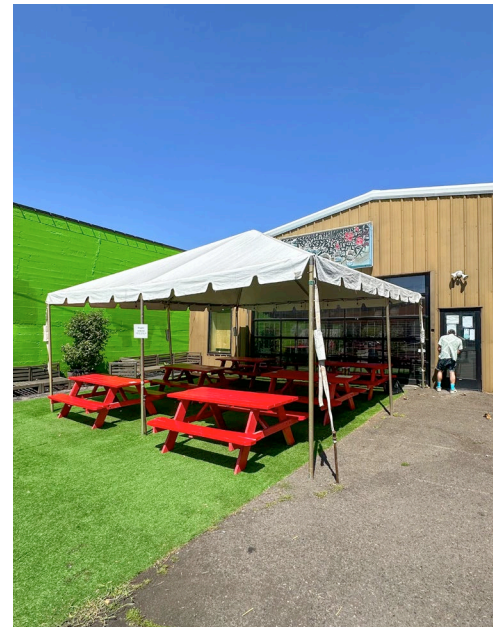
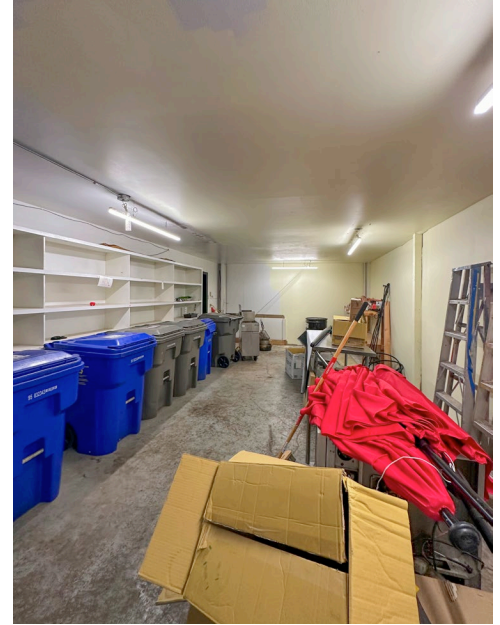
ANNE HECHT

Director - Retail Services
+1 503 279 1728
anne.hecht@cushwake.com



200 SW Market St, Ste 200, Portland, OR 97201

2,500 SF Retail Sublease | 2105 SE Division Street, Portland, OR 97202



	1 MILE	2 MILE	3 MILE		1 MILE	2 MILE	3 MILE
Population: 2024	26,833	101,145	228,944	Daytime Employees	20,629	144,386	338,294
Households: 2024	13,100	51,185	115,422	Median Home Value	\$686,090	\$675,835	\$677,834
Median Age	37.9	37.9	39.3	Avg. Household Income	\$114,123	\$107,273	\$110,196

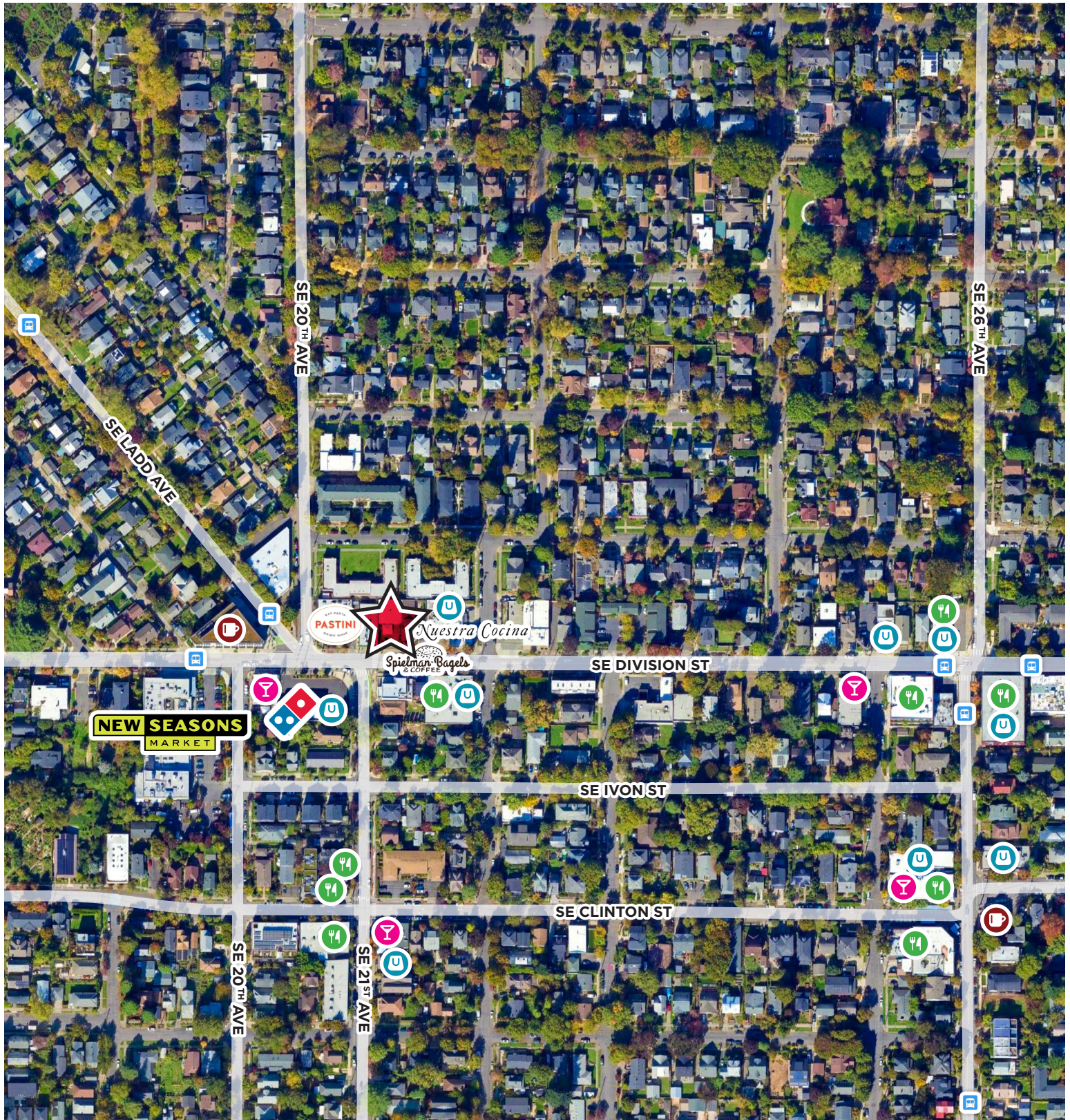
* 2024 Demographics derived from CoStar for 2105 SE Division Street, Portland OR 97202

ANNE HECHT

Director - Retail Services
+1 503 279 1728
anne.hecht@cushwake.com



200 SW Market St, Ste 200, Portland, OR 97201



ANNE HECHT

Director - Retail Services
+1 503 279 1728
anne.hecht@cushwake.com



200 SW Market St, Ste 200, Portland, OR 97201