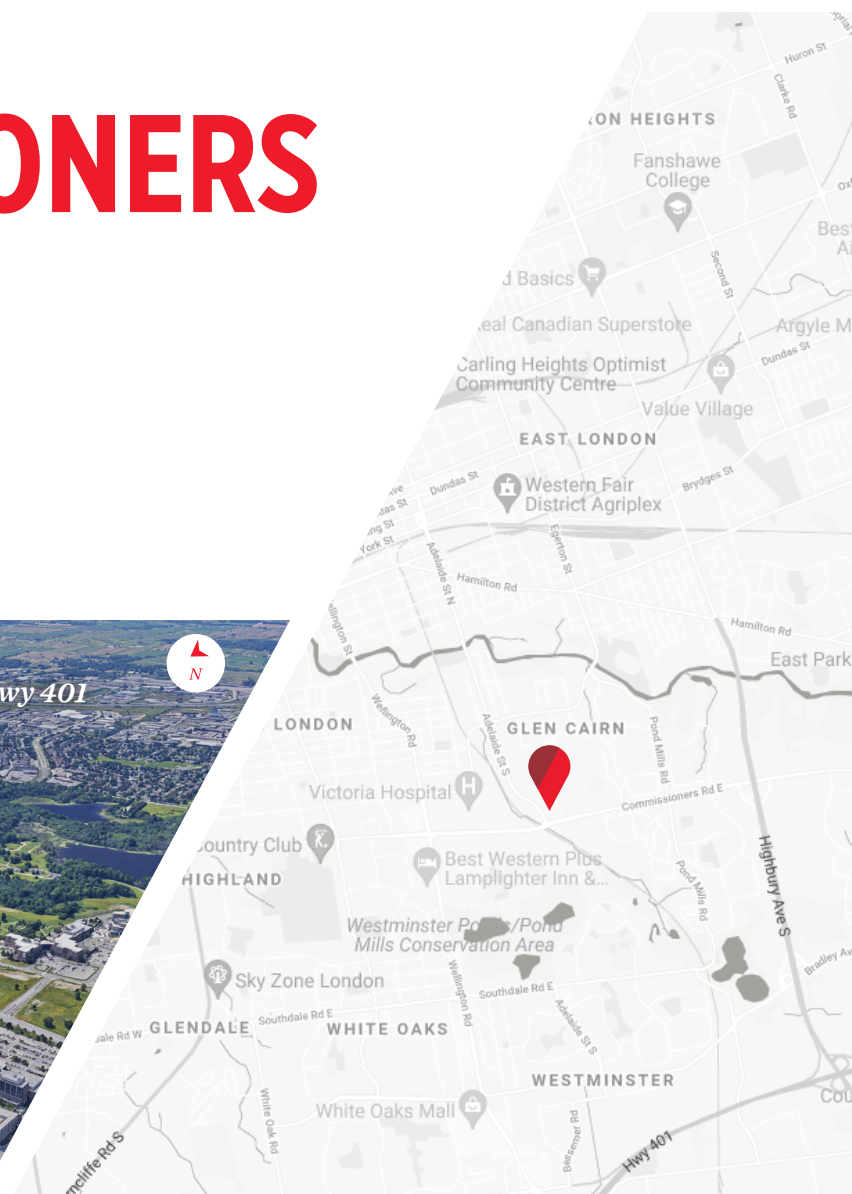




PRIME OFFICE/COMMERCIAL SPACES | FOR LEASE

# COMMISSIONERS RD EAST

*London, ON N5Z 3J1*



**CUSHMAN &  
WAKEFIELD**

Southwestern Ontario

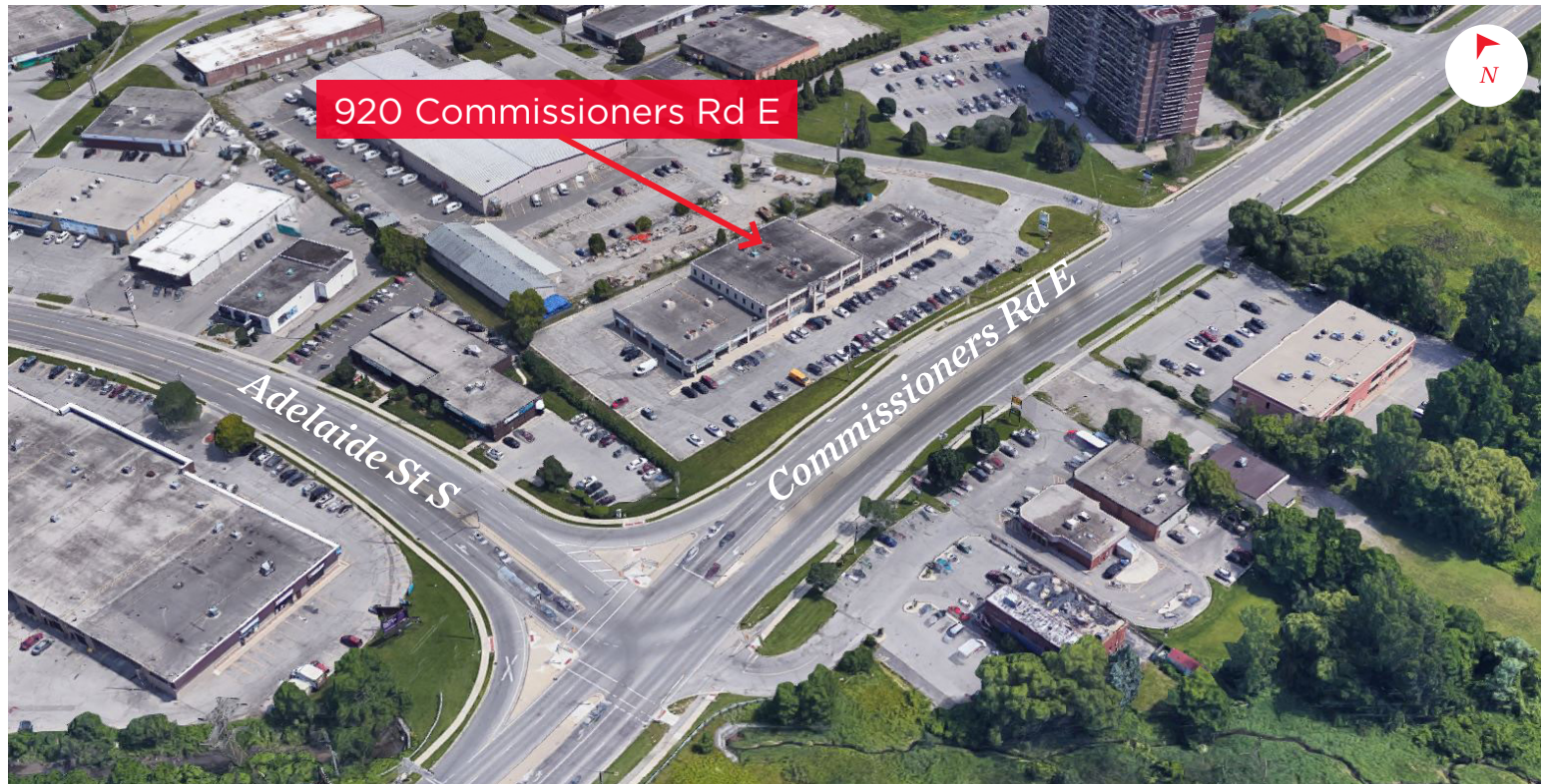


# ABOUT THE PROPERTY

Prime office/commercial spaces for lease located in South Central London at the corner of Adelaide Street East and Commissioners Street East

UNIT	APPROX. AVAILABLE SPACE	ASKING RENT	ADDITIONAL RENT	COMMENTS
116	4,835 SF	\$16.00 PSF Net	\$8.25 PSF	<ul style="list-style-type: none"> <li>Former March of Dimes office space</li> <li>Additional 701 SF could be added to unit</li> </ul>
205A	662 SF	\$12.00 PSF Net	\$8.25 PSF	<ul style="list-style-type: none"> <li>Second Floor Office</li> </ul>

- **Zoning:** RSC2/RSC3/RSC4/RSC5 - permitting a wide range of uses ranging from retail stores, financial commercial recreation, medical, dental, office, labs etc.
- **Parking:** Plenty available on-site
- Daily traffic volumes of over 31,000 vehicles per day
- Situated just down the street from Victoria Hospital
- Direct exposure to Commissioners Road East
- Quick and easy access via Wellington Road or Highbury Avenue Via Hwy 401 and 402



**TYLER DESJARDINE**  
Sales Representative  
519 438 5403  
tyler.desjardine@cushwakeswo.com

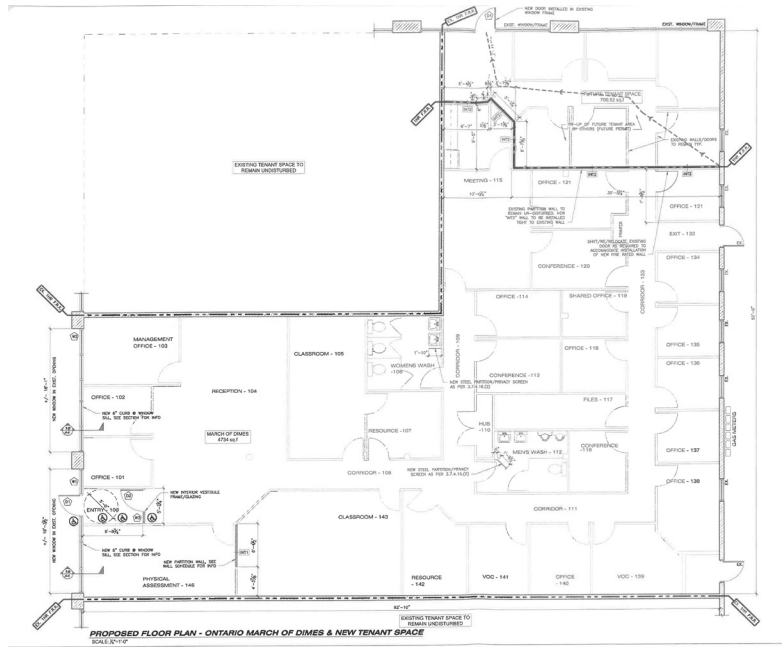
**CUSHMAN & WAKEFIELD**  
SOUTHWESTERN ONTARIO  
850 Medway Park Dr, Suite 201  
London, Ontario N6G 5C6  
[www.cushwakeswo.com](http://www.cushwakeswo.com)

**CUSHMAN & WAKEFIELD**  
Southwestern Ontario

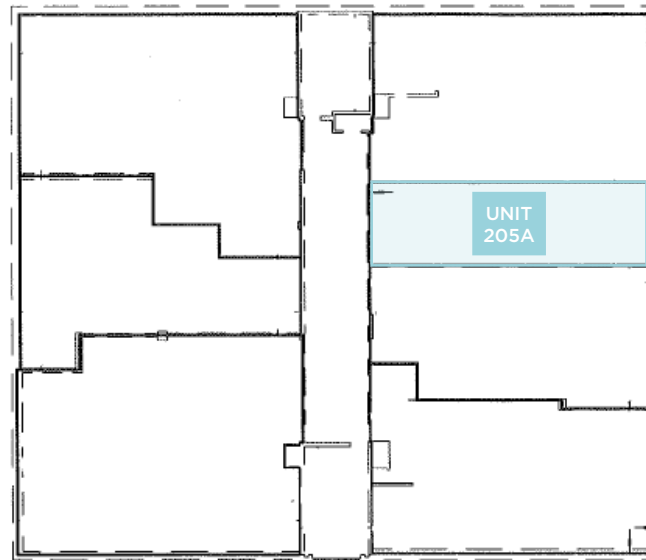
©2025 Cushman & Wakefield Southwestern Ontario, Real Estate Brokerage, Independently Owned and Operated. A Member of the Cushman & Wakefield Alliance. This information has been obtained from sources believed to be reliable but has not been verified. No warranty or representation, express or implied, is made as to the condition of the property (or properties) referenced herein or as to the accuracy or completeness of the information contained herein, and same is submitted subject to errors, omissions, change of price, rental or other conditions, withdrawal without notice, and to any special listing conditions imposed by the property owner(s). Any projections, opinions or estimates are subject to uncertainty and do not signify current or future property performance. All rights reserved.

# FLOOR PLAN

## FLOOR PLAN | UNIT 116



## FLOOR PLAN | SECOND FLOOR



**TYLER DESJARDINE**  
*Sales Representative*  
 519 438 5403  
[tyler.desjardine@cushwakeswo.com](mailto:tyler.desjardine@cushwakeswo.com)

**CUSHMAN & WAKEFIELD**  
**SOUTHWESTERN ONTARIO**  
 850 Medway Park Dr, Suite 201  
 London, Ontario N6G 5C6  
[www.cushwakeswo.com](http://www.cushwakeswo.com)

**CUSHMAN & WAKEFIELD**  
 Southwestern Ontario

©2025 Cushman & Wakefield Southwestern Ontario, Real Estate Brokerage, Independently Owned and Operated. A Member of the Cushman & Wakefield Alliance. This information has been obtained from sources believed to be reliable but has not been verified. No warranty or representation, express or implied, is made as to the condition of the property (or properties) referenced herein or as to the accuracy or completeness of the information contained herein, and same is submitted subject to errors, omissions, change of price, rental or other conditions, withdrawal without notice, and to any special listing conditions imposed by the property owner(s). Any projections, opinions or estimates are subject to uncertainty and do not signify current or future property performance. All rights reserved.



# IMAGES

## Unit 205A



**TYLER DESJARDINE**

*Sales Representative*

519 438 5403

[tyler.desjardine@cushwakeswo.com](mailto:tyler.desjardine@cushwakeswo.com)

**CUSHMAN & WAKEFIELD**  
**SOUTHWESTERN ONTARIO**

850 Medway Park Dr, Suite 201

London, Ontario N6G 5C6

[www.cushwakeswo.com](http://www.cushwakeswo.com)



**CUSHMAN &  
WAKEFIELD**

Southwestern Ontario

©2025 Cushman & Wakefield Southwestern Ontario, Real Estate Brokerage, Independently Owned and Operated. A Member of the Cushman & Wakefield Alliance. This information has been obtained from sources believed to be reliable but has not been verified. No warranty or representation, express or implied, is made as to the condition of the property (or properties) referenced herein or as to the accuracy or completeness of the information contained herein, and same is submitted subject to errors, omissions, change of price, rental or other conditions, withdrawal without notice, and to any special listing conditions imposed by the property owner(s). Any projections, opinions or estimates are subject to uncertainty and do not signify current or future property performance. All rights reserved.