

FOR LEASE

76,440 SF OF INDUSTRIAL SPACE AVAILABLE



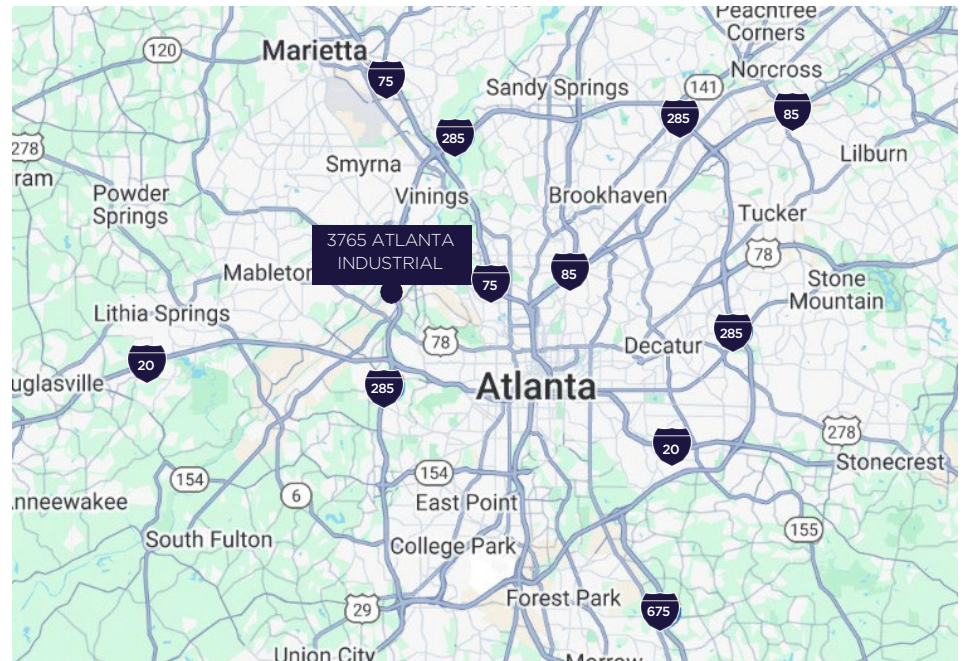
3765 ATLANTA INDUSTRIAL DRIVE
ATLANTA, GA

BUILDING SIZE: 161,965 SF



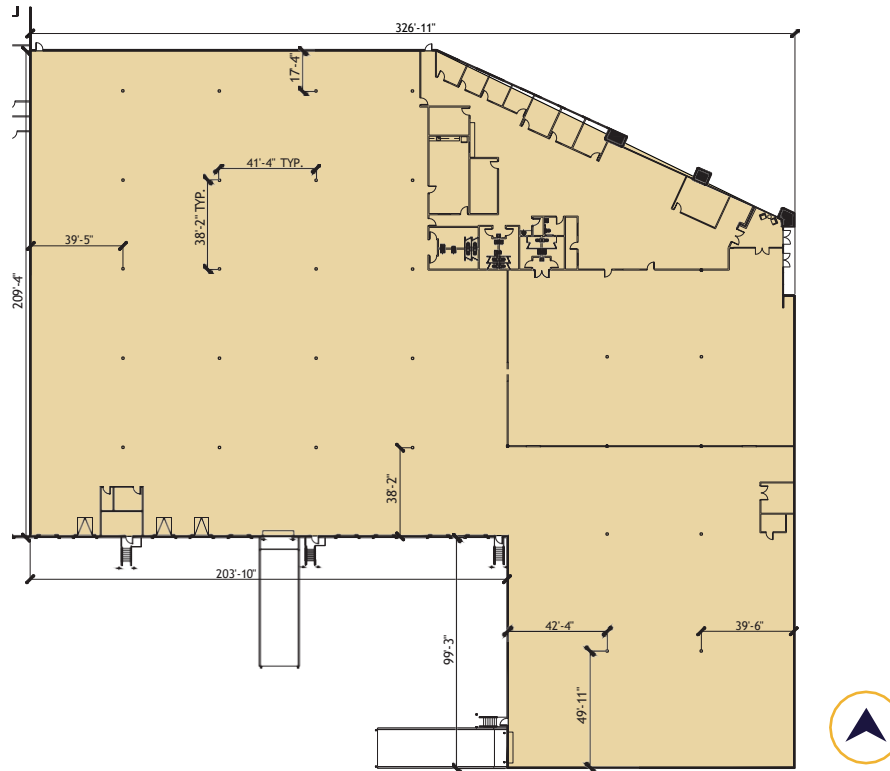
PROPERTY HIGHLIGHTS

| | |
|------------------|---|
| Building Size: | 161,965 SF |
| Space Available: | 76,440 SF |
| Availability: | Available with 30 days' notice to existing Tenant |
| Term: | Through 6/30/2026 |
| Rate: | Inquire for rate |
| Dock Doors: | 9 (with 3 pit levelers) |
| Drive-in-Doors: | 2 (12' W x 14' H) |
| Office SF: | 8,976 SF |
| Column Spacing: | 41' x 38' |
| Clear Height: | 22' |
| Truck Court: | 100' |



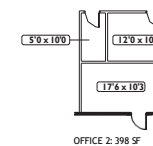
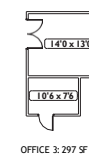
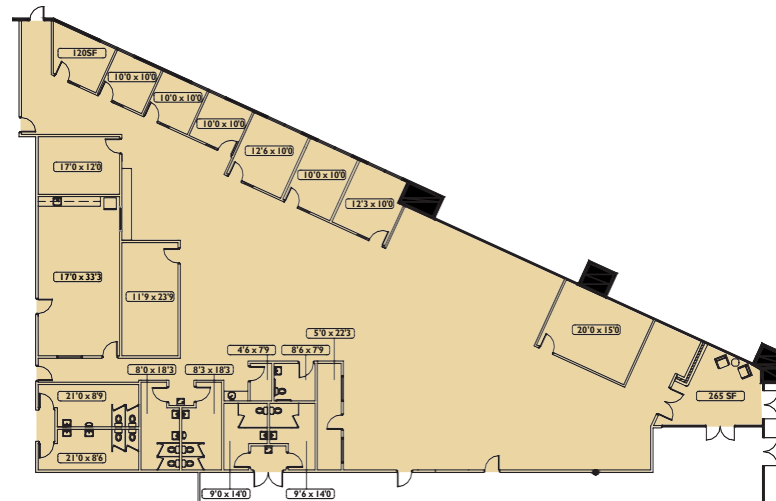
FLOOR PLAN

76,440 SF



OFFICE PLAN

8,976 SF





CONTACT INFORMATION

ADAM THOMAS, CCIM

Senior Director

Office +1 404 853 5318

Cell +1 770 361 2530

adam.thomas@cushwake.com

BRIAN MONAGHAN, SIOR

Vice Chair

Office +1 404 853 5212

Cell +1 770 605 1703

brian.monaghan@cushwake.com



©2024 Cushman & Wakefield. All rights reserved. The information contained in this communication is strictly confidential. This information has been obtained from sources believed to be reliable but has not been verified. NO WARRANTY OR REPRESENTATION, EXPRESS OR IMPLIED, IS MADE AS TO THE CONDITION OF THE PROPERTY (OR PROPERTIES) REFERENCED HEREIN OR AS TO THE ACCURACY OR COMPLETENESS OF THE INFORMATION CONTAINED HEREIN, AND SAME IS SUBMITTED SUBJECT TO ERRORS, OMISSIONS, CHANGE OF PRICE, RENTAL OR OTHER CONDITIONS, WITHDRAWAL WITHOUT NOTICE, AND TO ANY SPECIAL LISTING CONDITIONS IMPOSED BY THE PROPERTY OWNER(S). ANY PROJECTIONS, OPINIONS OR ESTIMATES ARE SUBJECT TO UNCERTAINTY AND DO NOT SIGNIFY CURRENT OR FUTURE PROPERTY PERFORMANCE.