

915

WOODLAND VIEW DR
YORK, PA 17406



AVAILABLE Q1 2024



± 109,504 SF
FOR LEASE

Gerard J. Blinebury, Jr.
Executive Vice Chair
+1 717 231 7291
gerry.blinebury@cushwake.com

Allie M. Gaeta
Senior Director
+1 717 231 7461
allie.gaeta@cushwake.com



**CUSHMAN &
WAKEFIELD**

LOCATION



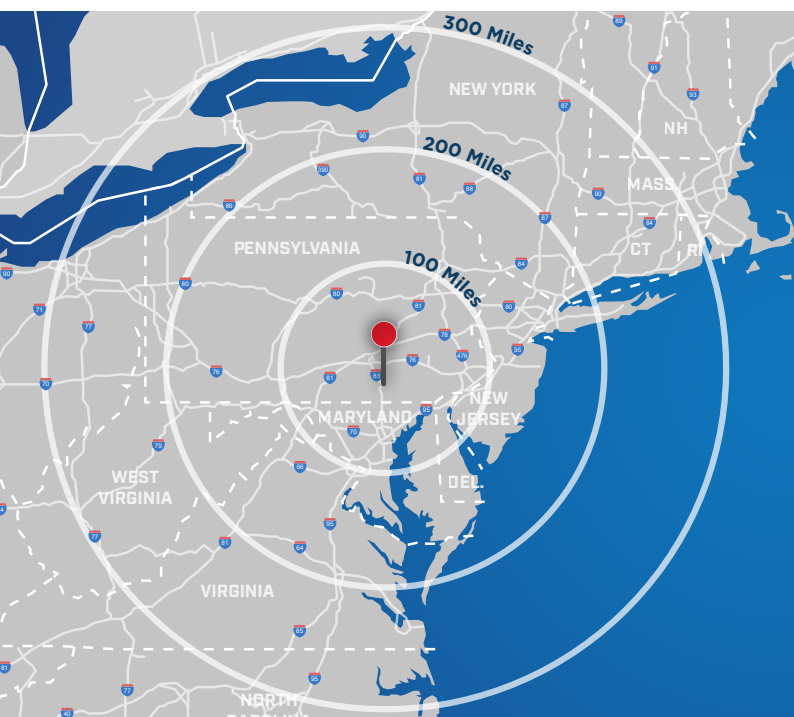
DRIVE TIMES

	4 MILES	8 MINS
	23 MILES	24 MINS

32 MILES 34 MINS

15 MILES 20 MINS

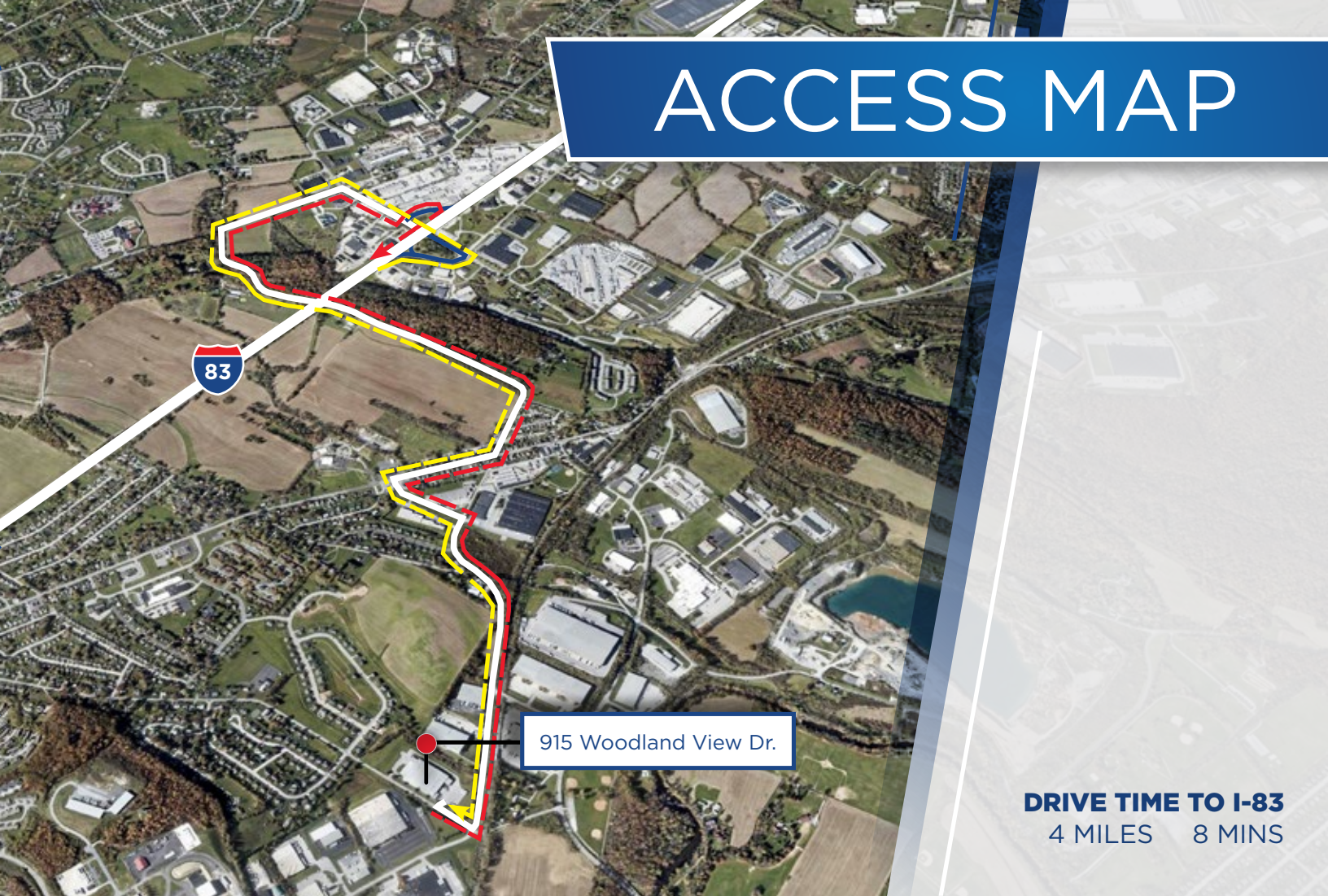
16 MILES 21 MINS



MAJOR CITIES

YORK, PA	4 MILES	10 MINS
HARRISBURG, PA	25 MILES	33 MINS
BALTIMORE, MD	58 MILES	63 MINS
PHILADELPHIA, PA	102 MILES	118 MINS
WASHINGTON, D.C.	98 MILES	129 MINS
NEW YORK, NY	186 MILES	188 MINS

ACCESS MAP



DRIVE TIME TO I-83
4 MILES 8 MINS

LOCATION OVERVIEW



South Central Pennsylvania is one of the fastest growing Industrial real estate markets due to its convenient access to I-83, I-81, I-78 and the Pennsylvania Turnpike (I-76). 915 Woodland View Drive allows access to over 50% of the United States population within a 10 hour truck drive.



ACCESS

915 Woodland View Drive is conveniently located off exit 22 of I-83, in York County.



LABOR

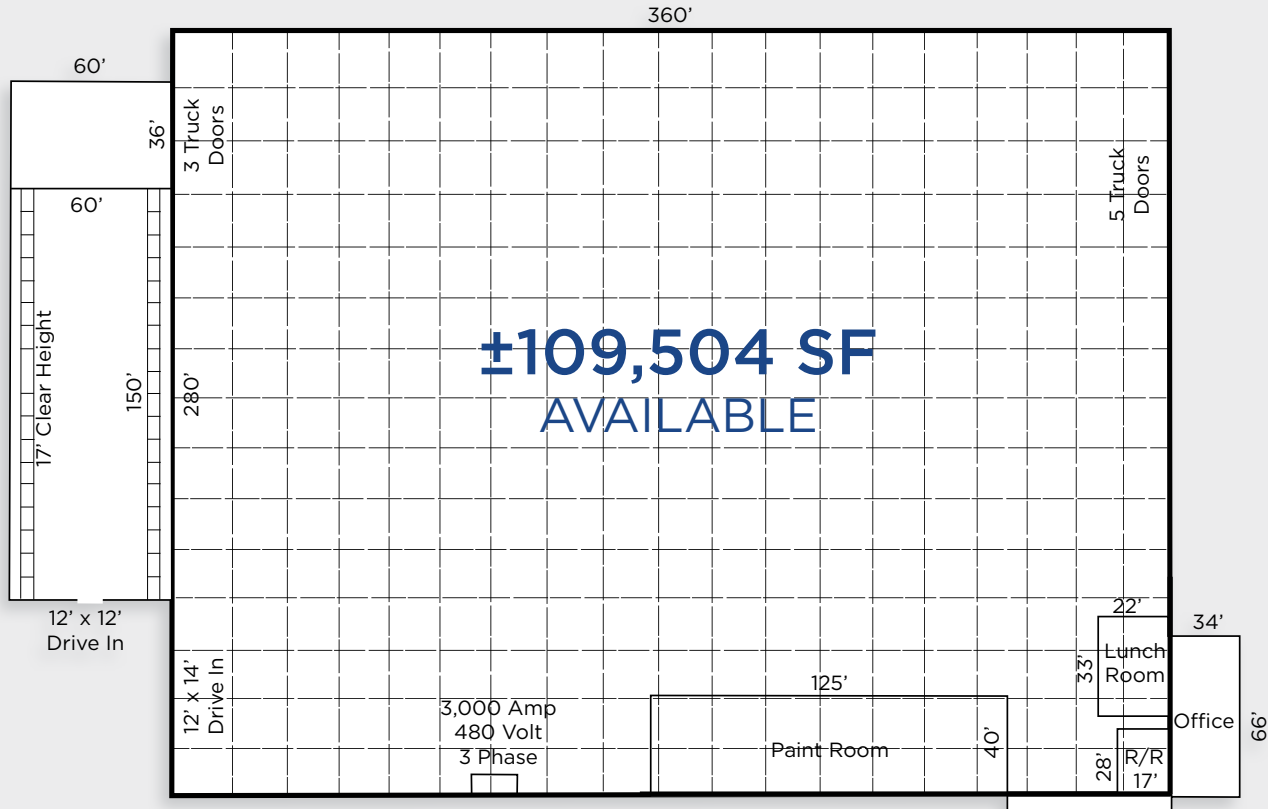
York County has a strong labor force of roughly 240,000 people and is a superior pocket of the market in terms of labor supply.



NEARBY DISTRIBUTION OPERATIONS

Eagle Global Logistics, Amazon, Harley Davidson, Starbucks, AmeriCold, International Truck, Graham Packaging, ES3, Ceva Logistics, RR Donnelley, Caterpillar, and United Natural Foods.

BUILDING SPECS



BUILDING AREA ±109,504 SF

OFFICE AREA ±2,244 SF

STORAGE AREA ±9,000 SF

BUILDING DIMENSIONS 280' X 360'

COLUMN SPACING 40' x 40'

CONFIGURATION CROSS-DOCK

ROOF STANDING SEAM METAL

CLEAR HEIGHT 22'2" - 26'5"

DOCK DOORS 8 (8'x10')

DRIVE-IN DOORS 2 (12'x14' & 12'x12') DRIVE-INS

AUTO PARKING 89 TOTAL SPACES

POWER 3,000A 480V 3-PHASE HEAVY

LIGHTING T-5 ON MOTION

FIRE PROTECTION WET

Gerard J. Blinebury, Jr.
Executive Vice Chair
+1 717 231 7291
gerry.blinebury@cushwake.com

Allie M. Gaeta
Senior Director
+1 717 231 7461
allie.gaeta@cushwake.com

