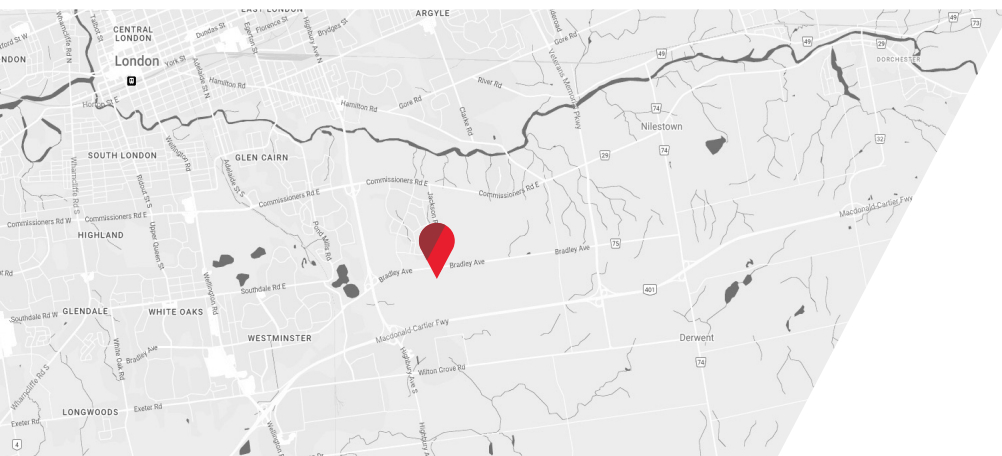




DEVELOPMENT LAND | **FOR SALE**

1781 BRADLEY AVENUE

London, ON N6M 1E5

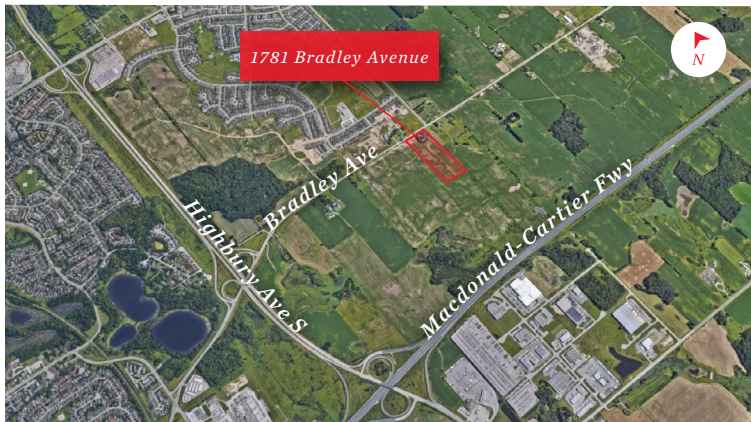


PROPERTY DETAILS

20-acre development site located in South London near the 401. This property is approximately 1.5 km from the Highbury/Bradley interchange and 3.5 km from the 401. The property is within the Urban Growth Boundary and across the street from the growing neighbourhood of Summerside. Contact listing agents for more details.

- **Site Area:** 20 Acres
- **Taxes:** \$7,535.27 (2024)
- **Zoning:** UR6

Asking Price: \$6,500,000



ADJACENT TO VARIOUS
EXISTING AND FUTURE
RESIDENTIAL DEVELOPMENTS



660' FRONTAGE
ALONG BRADLEY
AVENUE



IN CLOSE PROXIMITY TO
THE HIGBURY/BRADLEY
INTERCHANGE

JAMESON LAKE

Sales Representative

519 438 8548

jameson.lake@cushwakeswo.com

ANDREW JOHNSON

Sales Representative

519 438 8639

andrew.johnson@cushwakeswo.com

**CUSHMAN & WAKEFIELD
SOUTHWESTERN ONTARIO**
850 Medway Park Dr, Suite 201
London, Ontario N6G 5C6
www.cushwakeswo.com



**CUSHMAN &
WAKEFIELD**

Southwestern Ontario

©2025 Cushman & Wakefield Southwestern Ontario, Real Estate Brokerage, Independently Owned and Operated. A Member of the Cushman & Wakefield Alliance. This information has been obtained from sources believed to be reliable but has not been verified. No warranty or representation, express or implied, is made as to the condition of the property (or properties) referenced herein or as to the accuracy or completeness of the information contained herein, and same is submitted subject to errors, omissions, change of price, rental or other conditions, withdrawal without notice, and to any special listing conditions imposed by the property owner(s). Any projections, opinions or estimates are subject to uncertainty and do not signify current or future property performance. All rights reserved.